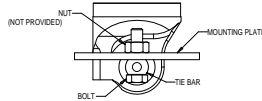


Suggested installation method for GM lower control arm modification



- 1) Place lower mounting ring on control arm as shown in photo on the right.
- 2) Scribe a line around the inside of the mount
- 3) Remove material to within 1/32" of scribed line.
- 4) Weld ring to control arm with a minimum of (4) 1" long welds on either side of the mounting holes. Ring can be fully welded in if desired.



Caution: For coil over applications the plate must be backed up with an additional 5/16" nut on the bolts that hold in the shock-see diagram to the right.

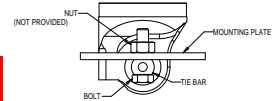
AFCO Racing products.
800-632-2320
www.AFCOracing.com

LIT-573 REV B 3/17/11

Suggested installation method for GM lower control arm modification



- 1) Place lower mounting ring on control arm as shown in photo on the right.
- 2) Scribe a line around the inside of the mount
- 3) Remove material to within 1/32" of scribed line.
- 4) Weld ring to control arm with a minimum of (4) 1" long welds on either side of the mounting holes. Ring can be fully welded in if desired.



Caution: For coil over applications the plate must be backed up with an additional 5/16" nut on the bolts that hold in the shock-see diagram to the right.

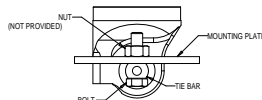
AFCO Racing products.
800-632-2320
www.AFCOracing.com

LIT-573 REV B 3/17/11

Suggested installation method for GM lower control arm modification



- 1) Place lower mounting ring on control arm as shown in photo on the right.
- 2) Scribe a line around the inside of the mount
- 3) Remove material to within 1/32" of scribed line.
- 4) Weld ring to control arm with a minimum of (4) 1" long welds on either side of the mounting holes. Ring can be fully welded in if desired.



Caution: For coil over applications the plate must be backed up with an additional 5/16" nut on the bolts that hold in the shock-see diagram to the right.

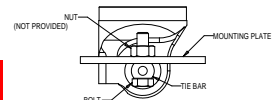
AFCO Racing products.
800-632-2320
www.AFCOracing.com

LIT-573 REV B 3/17/11

Suggested installation method for GM lower control arm modification



- 1) Place lower mounting ring on control arm as shown in photo on the right.
- 2) Scribe a line around the inside of the mount
- 3) Remove material to within 1/32" of scribed line.
- 4) Weld ring to control arm with a minimum of (4) 1" long welds on either side of the mounting holes. Ring can be fully welded in if desired.



Caution: For coil over applications the plate must be backed up with an additional 5/16" nut on the bolts that hold in the shock-see diagram to the right.

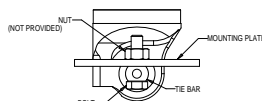
AFCO Racing products.
800-632-2320
www.AFCOracing.com

LIT-573 REV B 3/17/11

Suggested installation method for GM lower control arm modification



- 1) Place lower mounting ring on control arm as shown in photo on the right.
- 2) Scribe a line around the inside of the mount
- 3) Remove material to within 1/32" of scribed line.
- 4) Weld ring to control arm with a minimum of (4) 1" long welds on either side of the mounting holes. Ring can be fully welded in if desired.



Caution: For coil over applications the plate must be backed up with an additional 5/16" nut on the bolts that hold in the shock-see diagram to the right.

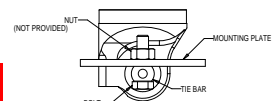
AFCO Racing products.
800-632-2320
www.AFCOracing.com

LIT-573 REV B 3/17/11

Suggested installation method for GM lower control arm modification



- 1) Place lower mounting ring on control arm as shown in photo on the right.
- 2) Scribe a line around the inside of the mount
- 3) Remove material to within 1/32" of scribed line.
- 4) Weld ring to control arm with a minimum of (4) 1" long welds on either side of the mounting holes. Ring can be fully welded in if desired.



Caution: For coil over applications the plate must be backed up with an additional 5/16" nut on the bolts that hold in the shock-see diagram to the right.

AFCO Racing products.
800-632-2320
www.AFCOracing.com

LIT-573 REV B 3/17/11