

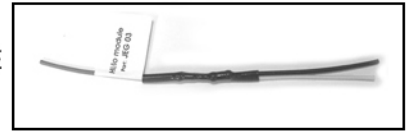


LED LIGHT SET INSTRUCTIONS

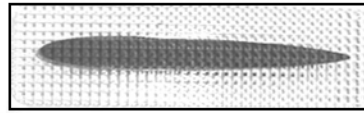
COMPLETE LIGHT SETS WILL INCLUDE THE FOLLOWING:

- 4- 10-32 NUTS
- 4- #10 WASHERS
- 2- RUBBER SEALS (NOT PICTURED)
- 4- T-BOLT STUDS

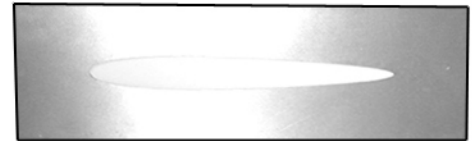
2- HI / LO MODULE



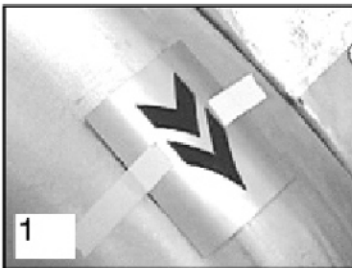
2- STAINLESS HOUSINGS WITH LED STRIP



2- LENSES



2- STEEL FACE PLATES



1

Shape and position the plates .



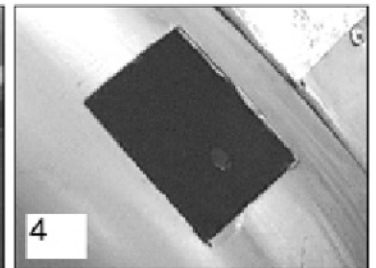
2

When you are satisfied with the position, scribe around the plate.

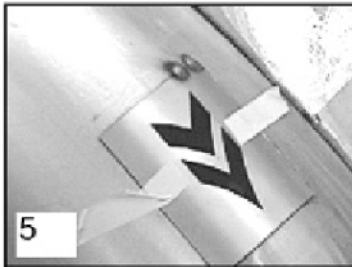


3

Cut out marked area.

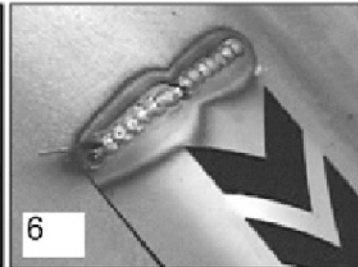


4



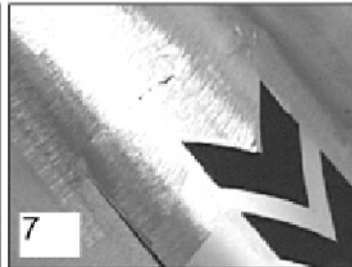
5

Fit plate in cut out and tack in place.



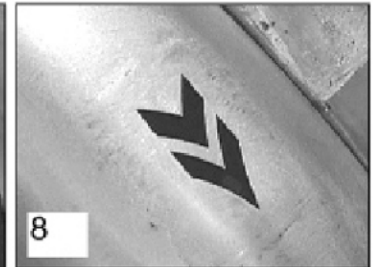
6

Work and weld slowly so not to warp panel.

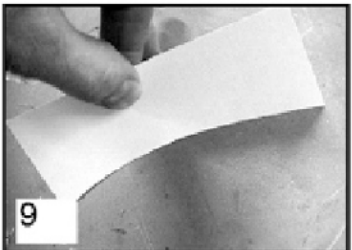


7

Weld and finish one inch at a time for best results, straightening panel as you go.

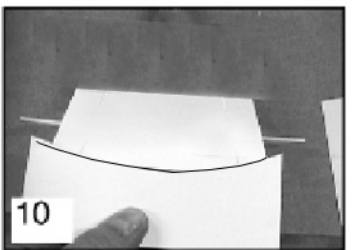


8



9

To fit the light box make a template of the curve in the panel



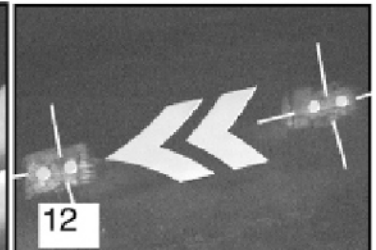
10

Transfer the curve to the light box and trim. (We trim our boxes with on a belt grinder)



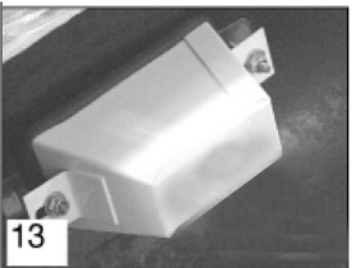
11

Position the light box and mark the position for the T-bolt studs.



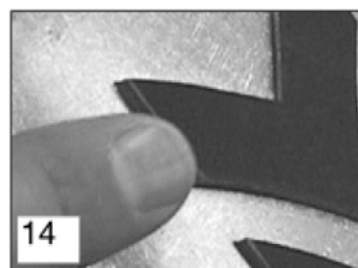
12

Bond or weld T-bolts in place.



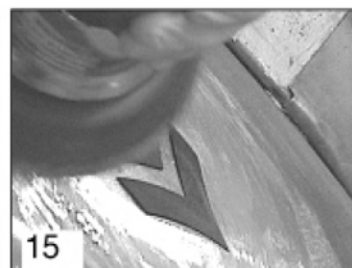
13

Install the lenses and light boxes.



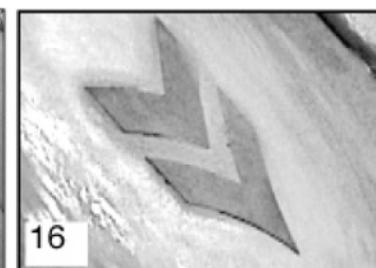
14

The lenses will require sanding.



15

You can knock down the high areas with a grinder or a DA sander with 80 grit paper.



16