

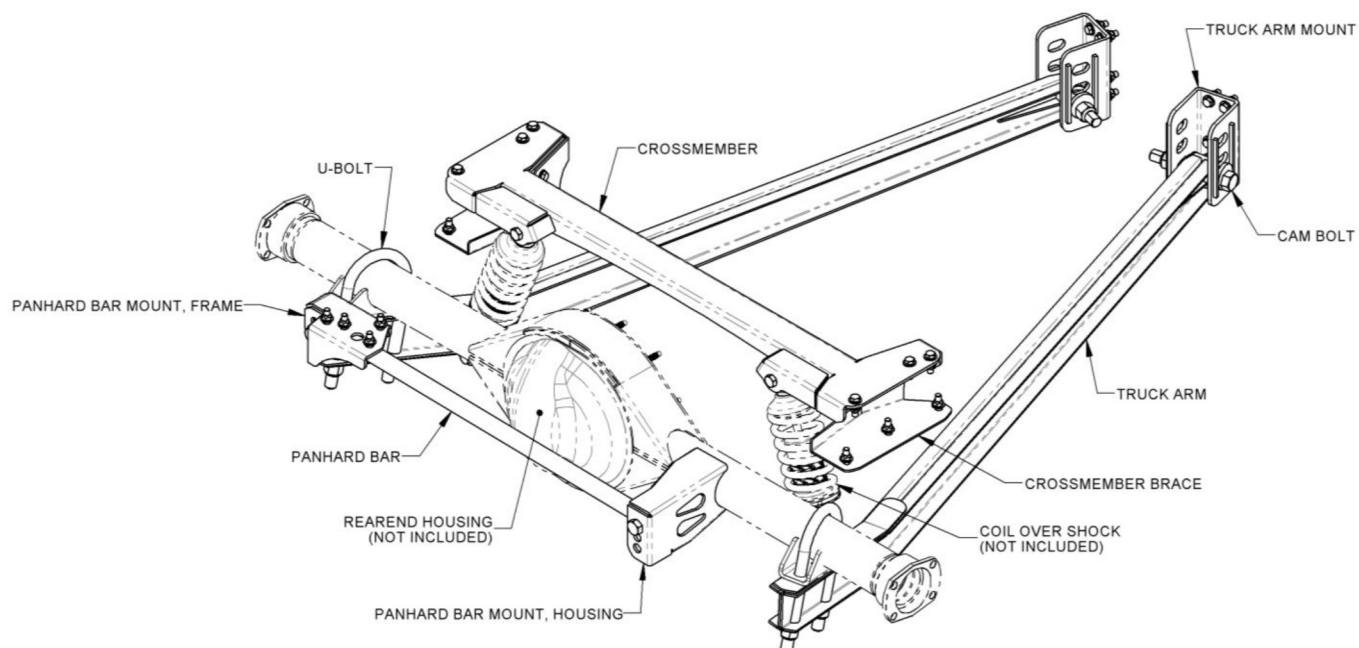
# INSTRUCTIONS

© 2020, Speedway Motors, Inc.

**SPEEDWAY**  
motors®

## 916-6072 - 1960-72 C-10 Truck Rear Suspension

Kit Contents		
Qty	Part #	Description
1	916-6072.1	Mount, Panhard Bar, Frame
1	916-6072.2	Mount, Truck Arm
1	916-6072.3	Crossmember, Shock Mount
1	916-6072.4-LH	Brace, Crossmember, Left
1	916-6072.4-RH	Brace, Crossmember, Right
1	916-6072.5	Panhard Bar
1	916-16769.9	Mount, Panhard Bar, Housing
1	916-6072.10	Hardware Kit
1	350-004	Truck Arms
1	350-018	U-Bolts, Truck Arms



# INSTRUCTIONS

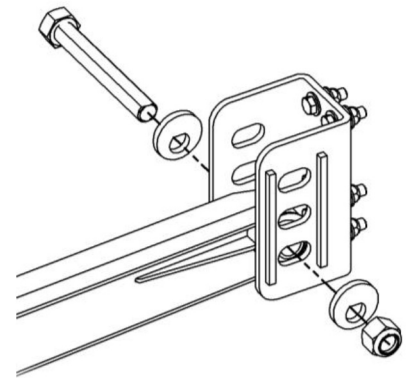
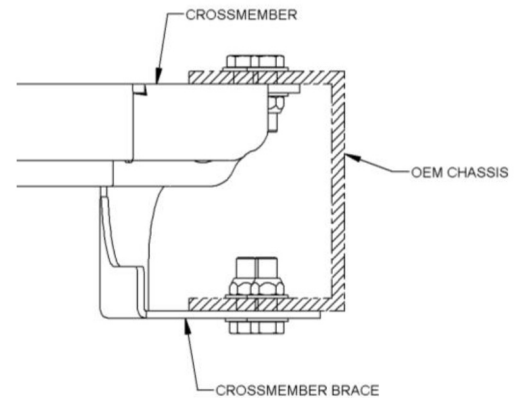
© 2020, Speedway Motors, Inc.



1. **Remove Rear Suspension:** Remove truck box. Raise the truck and support it with jack stands or a lift. Remove the exhaust, drive shaft, rear end, and all rear suspension components. Disconnect and remove brake lines, and E-brake cables from bottom of truck.
2. **Remove OE Brackets/Crossmember:** Remove the front truck arm mounts, panhard bar mount, and the rear crossmember by removing the factory-installed rivets.

### 3. Install New Brackets/Crossmember:

- Front Truck Arm Mounts
  - i. Truck arm mounts will bolt in the same position as the OE mounts through the rivet holes.
  - ii. Secure to the frame using the supplied 3/8"-24 x 1 1/4" grade 5 bolts, washers and lock nuts.
  - iii. Repeat on opposite side
- Crossmember & Crossmember Braces
  - i. Crossmember & braces will bolt in the same position as the OE crossmember through the rivet holes.
  - ii. Loosely bolt crossmember to the frame using the supplied 3/8"-24 x 1 1/4" grade 5 bolts, washers and lock nuts.
  - iii. Loosely bolt braces to the frame and crossmember using the supplied 3/8"-24 x 1/4" grade 5 bolts, washers and lock nuts.
  - iv. Now fully tighten all crossmember hardware.
- Panhard Bar Mount
  - i. Panhard bar mount will bolt in the same position as the OE mount through the rivet holes.
  - ii. Secure to the frame using the supplied 3/8"-24 x 1 1/4" grade 5 bolts, washers and lock nuts.



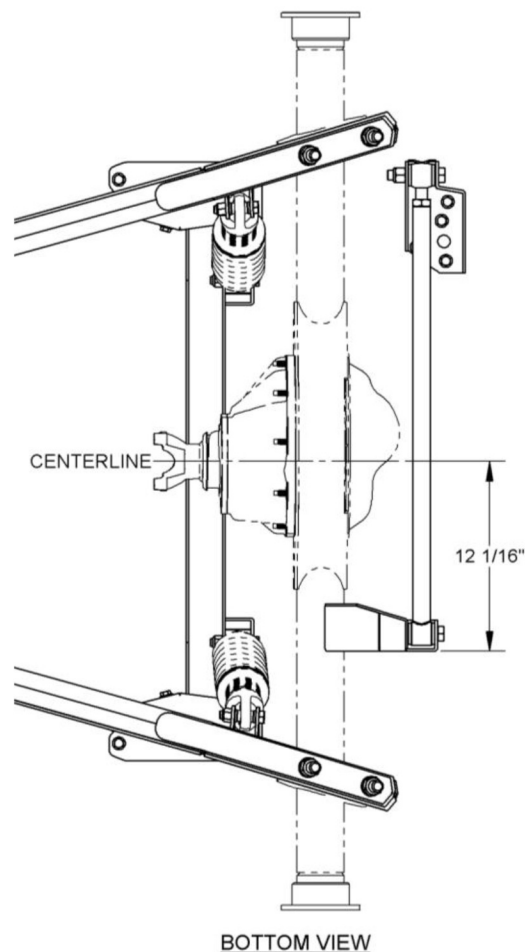
4. **Install Truck Arms and Rearend Housing:** Install truck arms onto the front truck arm mounts using the supplied 3/4"-16 X 5-1/2" grade 8 cam bolts and spacers. **NOTE:** Install the cam bolts in the center of adjustment as shown. The flat side of the bolt should be facing upwards. Install rear end housing using the supplied U-bolts and nuts as shown above. **Do not fully tighten U-bolts at this time.** Raise the rear end to the desired ride height. (Without frame modification suggested ride height is 13-1/2" center to center for the shock bolt holes). (If using a C-notch frame modification suggested ride height is 12-3/8" center to center for the shock bolt holes). Support the rear end at this height and center it in the truck. Once the rear end is centered, and at ride height, add shims between the arms and rear end housing to achieve the desired pinion angle. Now, double check that the rear end is in the proper location and tighten down the U-bolt nuts.

# INSTRUCTIONS

© 2020, Speedway Motors, Inc.

**SPEEDWAY**  
motors®

5. **Install Panhard Bar and Panhard Bar Bracket:** Secure the panhard bar to the rear crossmember using the supplied 5/8"-18 x 3-1/4" grade 5 bolt and lock nut. Adjust the panhard bar so that there is about 1/2" of thread showing and tighten the jam nut. This will allow for a small amount of adjustment in both directions. Now, raise the panhard bar bracket into place on the rear end and bolt the panhard bar to it using the 5/8"-18 x 3-1/4" grade 5 bolt and lock nut. Rotate, or "clock" the bracket on the rear end so that the bolt is horizontal. Double check that the bracket is in the proper position and tack weld the bracket to the rear end housing. As shown, the panhard bar bracket should be about 12-1/16" from the center of the housing. The center of the housing can be found by measuring the flange to flange distance and dividing by two. **DO NOT** assume that the drain plug or third member are centered, this is often not the case. You must measure to find the center! If using a Ford Grand National rearend housing you may have to clearance the panhard bar mount to fit. **NOTE:** There are three possible locations for each end of the panhard bar. Use the mounting holes that make the panhard bar closest to level with the ground at ride height. This will vary depending on ride height.



6. **Check Alignment and Clearances:** It is recommended at this point to cycle the suspension through its travel and check for any clearance issues. This is also a good time to double check that the rear end is aligned properly with the car and the pinion angle is correct. (Use the cam bolts on the truck arms to adjust the alignment).
7. **Finish Weld:** Remove the rear end, panhard bar, and truck arms from the car. Fully weld the panhard bar bracket to the rear end. **NOTE:** It is a very good idea to only weld a small bead at a time, then move to a new area and allow the first area to cool completely before welding further in that area. This will greatly reduce the risk of warping the rear end housing.

# INSTRUCTIONS

© 2020, Speedway Motors, Inc.



8. **Re-Assemble:** Once all of the welding is complete, everything can now be re-assembled.
- Secure the truck arms to the chassis brace using the cam bolts and cam spacers as shown in step 6. Torque the nuts to 120 ft-lbs.
  - Now is a good time to fully assemble the rear end by installing gears, axles, and brakes. (This can also be done after installing the housing into the truck)
  - Raise the complete rear end into position. Attach the rear end to the truck arms using the supplied u-bolts, washers, and nuts. Torque nuts to 220 ft-lbs.
  - Install the pan hard bar using the 5/8"-18 x 3-1/4" grade 5 bolt and lock nut on the crossmember end and the 5/8"-18 x 3-1/4" grade 5 bolt and nut on the housing end. Torque both bolts to 120 ft-lbs.
  - Install your coil over shocks using the supplied 1/2"-13 grade 5 bolts. The 2-1/2" bolts and 3/16" wide spacers are for the bottom while the longer 2-3/4" bolts and 5/16" spacers are for the top. Torque the coil-over bolts to 65 ft-lbs. **NOTE:** This kit is design to use a 5" stroke shock without modifying the frame and a 4" stroke shock if using a C-notch frame modification. Shock ends should be 1/2" bearings with a mounting width of 1". For recommended part numbers please visit our website or contact one of our tech experts.
  - Re-install; drive shaft, brake lines, and E-brake cable etc...
  - Bleed the brakes.
  - Fill the rear end with fluid.
  - Install wheels and tires.
9. **Alignment:**
- Lower the truck onto the ground and check for desired ride height. Adjust ride height if necessary by raising the truck and spinning the adjusting collar on the coil-over.
  - Once the ride height has been set, lower the truck onto the ground and make sure the rear end is in the center in the truck body. Adjust the panhard bar if necessary. Lengthening the panhard bar will move the rear end toward the passenger side, while shortening it will move the rear end toward the driver side.
  - Now that the ride height is set and the rear end is centered perfectly in the truck, the rear end can be aligned by adjusting the cam bolts on the front of the truck arms. **NOTE:** This is difficult to do accurately and a professional alignment is recommended. This method will get you close enough to drive the truck to an alignment shop.

# IMPORTANT

**DISCLAIMER** In an effort to offer our customers low prices, quick service and great value, Speedway Motors reserves the right to change suppliers, specifications, colors, prices, materials without notice. Prices and policies that were current and in effect at the time of printing are also subject to change without notice. Quantities are limited on some items. Any unauthorized use of this catalog including words, photos or drawings is prohibited. Speedway is not responsible for any typographical errors, printing errors or misinterpretations

**WARRANTY DISCLAIMER** Purchasers understand and recognize that racing parts, specialized street rod equipment, and all other parts and services sold by Speedway Motors, Inc. are exposed to many and varied conditions due to the manner in which they are installed and used. Except for certain limited warranties, if any, set forth in Speedway Motors, Inc.'s current catalog with respect to the products and/or parts thereof identified on your invoice, each product, and each part thereof, is sold "as is", and "with all faults" and Speedway Motors, Inc. makes no warranties either expressed or implied, written or oral, with regard such products and services including, without limitation, any warranty of merchantability or fitness for a particular purpose. Without limiting the foregoing, there is no warranty expressed or implied as to whether the goods sold hereby will protect purchasers or ultimate end-users of such products and parts from injury or death. In no event shall Speedway Motors, Inc. be liable for any special, incidental or consequential damages, or any other damages whatsoever arising out of or connected with the use or misuse of the products and each part thereof. Purchasers acknowledge and agree that no person, entity or agent of Speedway Motors, Inc. has any authority to make any statement contrary to this disclaimer and that any warranty statements or representations allegedly made on behalf of Speedway Motors, Inc. by any such person, entity or agent are void. Purchasers are relying solely on their own skill and judgment to select, purchase and use suitable products and assume all responsibility and risk with regard thereto. Some local laws prohibit the use of utility jugs, funnels and barrel pumps for dispensing fuel. Please check your own state for more information, regulations or further direction in your use of the utility jugs, funnels and barrel pump described in Speedway's catalogs or on Speedway Motors websites. Some parts in this catalog are not legal for sale or use in California. Items sold in this catalog are for racing vehicles which may never be used on a highway. The use of manufacturer's names and symbols are for reference purposes only.

**DAMAGE CLAIMS** Please inspect all packages upon delivery and in the presence of the delivery driver when possible. The driver must note any visible damage and provide procedures for handling damage claims. To allow for a claims process, please retain original box, packing material and damaged merchandise. Contact Speedway Motors for instructions regarding damage claim within 5 days of receipt. Speedway Motors assumes no liability after this period.

**SHORTAGES** Please check the contents of your delivery to ensure that all parts ordered are received. Refer to your invoice to cross check all items received and inspect all packing materials for contents of small items. Retain original shipping box and packing materials. Orders may be split into multiple boxes which can be delivered on different days. Contact Speedway Motors for instructions regarding shortage claim within 5 days of receipt. Speedway Motors assumes no liability after this 5 day period.

**REFUSALS** All refused packages will be billed the freight to and from the destination and refused COD orders will be billed a 15% restocking charge plus freight to and from destination.

**WARRANTY CLAIMS** If the item is used or installed and a warranty claim request is submitted, warranty work is done by the manufacturer and may take up to 30 days for processing. Speedway Motors will be required to follow the manufacturer's warranty instructions to allow for a credit refund or exchange when specified.

**RETURNS** We want you to be satisfied with your purchase. If you are not satisfied, you may return your new, unused item within 60 days for refund or exchange.

All exchanged or returned merchandise must be in original factory condition with no modifications or alterations. Returned merchandise must include original packaging materials, warranty cards, manuals, instructions, etc. If the returned item requires repackaging, your refund / exchange will be subject to a repackaging charge. Return/Exchange transactions less than \$99 are excluded from the free shipping offer.

**HOW TO RETURN AN ITEM** Please re-pack the item in a sturdy box, include a copy of your invoice and completed return form. Returns must be shipped prepaid. CODs are not accepted. Shipping costs for exchanged merchandise will be charged to your credit card.

Items that are returned after 60 days are subject to a 15% restocking charges. Fiberglass items returned will be subject to a 15% restocking charge. We are unable to accept returns on electrical parts, video tapes, DVD's, books, special order or closeout merchandise.

**BRAKE INSTALLATION ALERT** The selection and installation of brake components should only be done by personnel experienced in the proper installation and operation of braking systems. The installer must use his/her own discretion to determine the suitability of all brake components and brake kits for every particular application. Speedway Motors, Inc. makes no warranties either expressed or implied including any warranty of merchantability or fitness for a particular purpose, other than those contained in its current catalog or website with respect to the goods identified on the face of the invoice. There is no warranty expressed or implied as to whether the goods sold hereby will protect the purchaser or ultimate user of such goods from injury or death.

**EXHAUST INSTALLATION ALERT** Exhaust systems and other component surface finishes are not permanent. Coatings, paint and other factory supplied cosmetic treatments are only intended to protect from surface corrosion in an unused state. No returns are allowed after the parts have been installed. Header flanges must be clean and clear of paint and surface contaminants prior to mating to exhaust gaskets. Exhaust fasteners must be re-torqued after the initial heat cycle and regularly thereafter to ensure a proper gasket seal is maintained. Should you decide to install this exhaust product at your home, be warned that pleasure car or light duty truck/van "bumper" jacks are intended for emergency use only. The use of frame contact jack stands in conjunction with a floor jack as a main support is highly recommended to minimize accidental dropping of a vehicle while the installation proceeds. We recommend the use of a shop hoist if possible. Please use caution! Speedway Motors, Inc. makes no warranties either expressed or implied including any warranty of merchantability or fitness for a particular purpose, other than those contain in its current catalog or website with respect to the goods identified on the face of the invoice. There is no warranty expressed or implied as to whether the goods sold hereby will protect the purchaser or ultimate user of such goods from injury or death.

**CHECK LOCAL LAW** Some parts are not legal for sale or use in California on any pollution controlled motor vehicles. These items are legal in California for racing vehicles only which may never be used upon a highway. Check local law.

Find the above info on our website:

**SpeedwayMotors.com/Info/FAQ**

© 2020, Speedway Motors, Inc.

**Speedway Motors, Inc.**

P.O. Box 81906 • Lincoln, NE 68501

800.979.0122 • [SpeedwayMotors.com](http://SpeedwayMotors.com)

