

INSTRUCTIONS

916-31982

©Speedway Motors, Inc. January 2010

Please Read Instructions Completely Before Starting Your Installation

This kit installs '76-'81 Dodge Aspen rotors or Chrysler equivalent and '70-'77 Camaro or GM equivalent calipers on 1948-1956 Ford F-100 spindles.

PARTS LIST

INDEX NO.	DESCRIPTION	PART NUMBER	QTY.
1*	Bearing Adapter		2
	Hardware kit		1
2*	Caliper bracket		2
3*	1/2"-20 x 1-1/2" GR 8 hex bolt		6
4*	1/2"-20 lock nut		6
5*	Spacer .875 OD x .500 ID x .350		6
6	Seal	912S940S	2
7	Inner bearing cone	912-TL68149	2
8	Inner bearing cup	Supplied in rotor	2
9	11" 76-80 Dodge Aspen rotor	910-31065	2
10	Outer bearing cup	Supplied in rotor	2
11	Outer bearing cone	912-TLM11949	2
12*	Spindle washer		2
13*	Spindle nut		2
14*	Cotter pin		2
15	Dust cap pr	550-2490	1
16	Brake pad set	919-3382	1
17	69-77 Mid size GM Camaro caliper left	910-31035-L	1
17	69-77 Mid size GM Camaro caliper right	910-31035-R	1
18	Slide bolt	835-2300542	4

* Basic kit only

Warning: The selection and installation of brake components should only be done by personnel experienced in the proper installation and operation of braking systems. The installer must use his/her own discretion to determine the suitability of the brake components and brake kits for every particular application.

Speedway Motors, Inc. makes no warranties, either expressed or implied, including any warranty of merchantability or fitness for a particular purpose, other than those contained in its current catalog or website with respect to the goods identified on the face of the invoice. There is no warranty expressed or implied as to whether the goods sold hereby will protect the purchaser or ultimate user of such goods from injury or death.

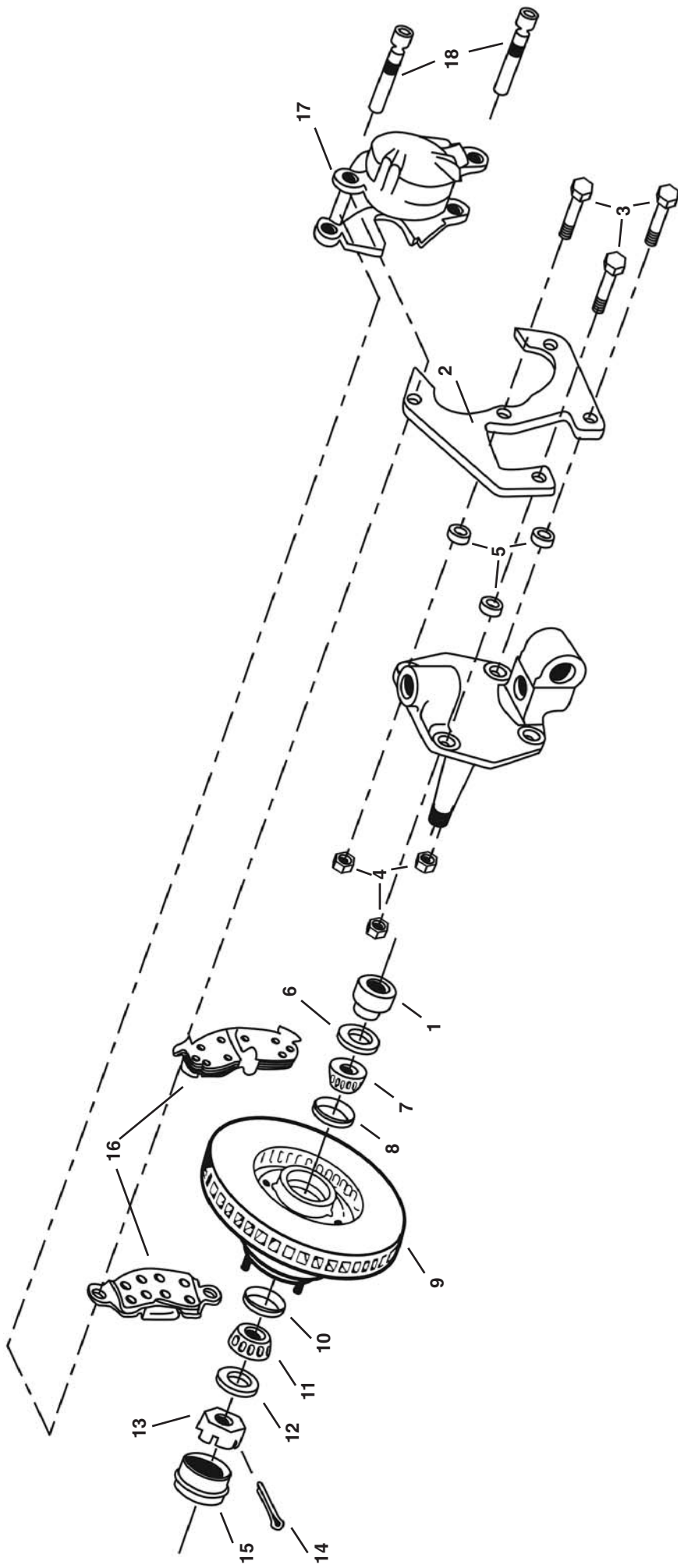
Speedway Motors Inc.,
P.O. Box 81906 Lincoln, NE 68501
402-323-3200 www.SpeedwayMotors.com



Using the parts list supplied double check that you received all the parts in this kit. If there are any missing parts, please contact the customer service department.

We recommend the use of all new or remanufactured components for this installation. If you are using any used components, it is the installers responsibly to determine the acceptably of the parts.

1. Remove your drums, backing plates and spindles from your axle and inspect the bearing surfaces on the spindle for wear or damage. Repair or replace as necessary.
2. Carefully press the bearing adaptor (#1) onto the spindle, making sure the flanged side goes toward the spindle. Make sure the adaptor is fully seated against the spindle. We recommend using a hydraulic press for pressing on the bearing adaptor. Or the adapter can be heated at 400 deg. for 20 minutes and then slide onto the spindle, allow to cool slowly at room temperature.
3. Re-install your spindles onto the axle and grease the king pins. Install the caliper brackets (#2) onto your spindles. NOTE: On some applications it may be necessary to drill out the lower spindle mounting holes from 7/16" to 1/2". The brackets mount to the back side of the spindle (the axle side) and the calipers mount to the rear. Use the 1/2"-20 x 1-1/2" GR 8 bolts (#3), lock nuts (#4) and spacers (#5) supplied. The bolts are installed from axle side of the spindle and the spacers mount between the spindle and caliper bracket. Torque to 119 ft. lbs.
4. Install the calipers (#17) onto the caliper brackets with the bleeders pointing up only use the correct GM mounting bolts (#18). On some GM calipers there is bump on the casting located next to the piston bore that may interfere with caliper mounting. In these cases the bump should be ground flush with the casting on the caliper. After the caliper is installed turn the spindles lock to lock and check for any interference. The caliper bracket should clear the king pin locknut. If it doesn't clear reverse the king pin nut so it is on the front side of the axle. Remove the caliper from the caliper bracket.
5. Pack and install the inner bearing (#7) with fresh disc brake bearing grease, and install the grease seal (#6). Seals must be installed straight; we recommend a seal installation tool for this installation.
6. Install the rotor (#9) on to the spindle, pack and install the outer bearing (#11). Install the spindle washer (#12) and spindle nut (#13). Adjust the bearing preload as normal and install the cotter pin (#14) and dust cap (#15).
7. Install the brake pads (#16) into the calipers (#17) and install the calipers onto the caliper brackets with the bleeders pointing up. Only use the correct GM mounting bolts (#18).
8. Install new brake lines making sure you check that the lines have clearance through the entire suspension travel and turning radius. Bleed the system as normal.
9. Install the wheels and remove the jack stands. Turn the steering wheel lock to lock and again check for any contact with the brake lines. Before operating the vehicle test the brakes under controlled conditions. Make several stops in a safe area from low speeds gradually working up to operating speeds.



IMPORTANT

DISCLAIMER

In an effort to offer our customers the low prices, quick service and great value, Speedway Motors reserves the right to change suppliers, specifications, colors, prices, materials. Each of the previous items is subject to change without notice. Speedway is not responsible for any typographical errors or misinterpretations. Quantities are limited on some items.

WARRANTY DISCLAIMER

The purchaser understands and recognizes that racing parts, specialized street rod equipment, and all parts and services sold by Speedway Motors, Inc. are exposed to many and varied conditions due to the manner in which they are installed and used. Speedway Motors, Inc. makes no warranties, either express or implied, including any warranty of merchantability or fitness for a particular purpose other than those contained in its current catalog with respect to the goods identified on the face of the invoice. There is no warranty expressed or implied as to whether the goods sold hereby will protect purchaser or ultimate user of such goods from injury or death. Speedway Motors assumes no liability after this period.

DAMAGE CLAIMS

Always inspect your package upon delivery. Inspect all packages in the presence of the delivery driver. The driver must note any damage. Ask the driver the Carrier's procedures for handling damage claims. You must hold the original box, packing material and damaged merchandise for inspection or the carrier will not honor the claim. Notify Speedway Motors customer service department for instructions on returning damaged goods. Speedway is not responsible if no notification is given within 5 days of receipt.

SHORTAGES

Always check the contents of your delivery to insure all the parts that you ordered were received. Please read the invoice. Double check all packing materials, small items may be wrapped inside with these products. Shortages may occur from damage to the box, so save all packing materials. Inspect the box for holes that would allow parts to fall out. If you are missing any item(s) be sure to check your invoice for back orders or canceled items before calling the customer service department. If Speedway has to split a shipment into multiple boxes, packages may be delivered on different days. You need to contact the customer service department within 5 days of delivery to assure the prompt replacement. Speedway Motors assumes no liability after this period.

REFUSALS

All refused COD customers will be billed a 15% restocking charge plus freight to and from the destination! If you have questions please contact Speedway's customer service department.

WARRANTY CLAIMS

If an item has a manufacturer's warranty as being free from defects we will exchange only. If the item has been used and you are requesting warranty work, this may take up to 30 days as warranty work is done by the manufacturer NOT Speedway Motors. If you have any questions please contact customer service.

RETURNS

Speedway wants you to be satisfied with your purchase. If within 30 days after you receive your shipment you are not satisfied, you may return the item for refund or exchange. All exchanged or returned merchandise must be in original factory condition with no modifications or alterations. Returned merchandise must include all packaging materials, warranty cards, manuals, and accessories. If the items being returned need to be repackaged there will be a re-packing charge. Re-pack the item in a sturdy box and include a copy of your invoice and complete the form on the back of the invoice. You must ship orders back **PRE-PAID. WE DO NOT ACCEPT COD SHIPMENTS.** All exchanges need to have reshipping charges included. Items that are returned after 30 days are subject to 15% restocking charges. All fiberglass returned will have 15% restocking charge. No returns on electrical parts, video tapes, and books. Absolutely no returns on special order or close out merchandise.

FREE CATALOGS

Speedway Motors offers FREE catalogs for Race, Street, Sprint and Midget, Sport Compact and Pedal Car Restoration.

Some items are not legal for sale or use in California on pollution controlled motor vehicles. These items are legal in California for racing vehicles only which may never be used upon a highway.

**Speedway Motors Inc.,
P.O. Box 81906 Lincoln, NE 68501
402-323-3200 www.SpeedwayMotors.com**

