

# VX4™ / VX2™ DATA SHEET



## NEXT GENERATION 4-CORNER VALVE



The VX4 (4-Corner Valve) and VX2 (2-Corner Valve) revolutionize solenoid valves with their sleek appearance, hidden wiring harness, small overall package, built-in flow-control adjustments, and fully-filtered and field serviceable 3/8" DOT push-to-connect fittings. The robust internal solenoid valve architecture maximizes flow rates, provides bubble-tight sealing, and guarantees operation up to 200 psi for millions of cycles. All of this technology is housed in a unique enclosure design which routes each of the solenoid wires through a single weatherproof M-12 style connector. With the VX4's overall size of only **4.375" x 2.175" x 3.587"** and the VX2's overall size of only **2.175" x 2.175" x 3.587"**, plus the ability to survive harsh under vehicle environments, this product is ideal for any application.

### FEATURES

- |                                                                                       |                                                                   |
|---------------------------------------------------------------------------------------|-------------------------------------------------------------------|
| • For use with e-Level™ Controller or any other brand of controller or switches.      | • Dual Inlet & Exhaust Ports for maximum flow.                    |
| • VFC™ (variable flow control) allows end-user adjustments of the raise/lower speeds. | • Single sided plumbing reduces installation space .              |
| • Pre-wired & Port Numbered for reduced installation time.                            | • Anodized Aluminum Manifold to prevent corrosion.                |
| • Fully-filtered and field serviceable 3/8" DOT push-to-connect fittings.             | • 100% Weather Resistant for harsh under vehicle environments.    |
| • High Pressure Rated for operation up to 200 psi.                                    | • Aluminum Mounting Spacer included for "floating" installations. |



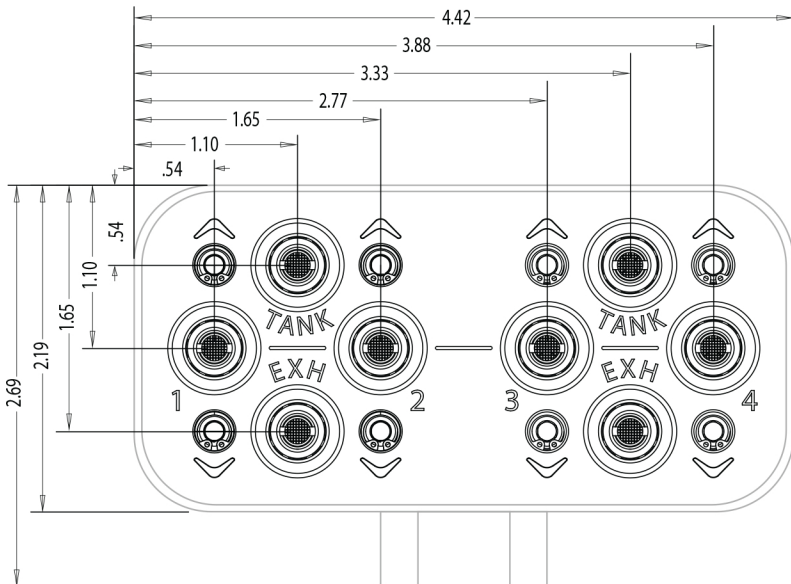
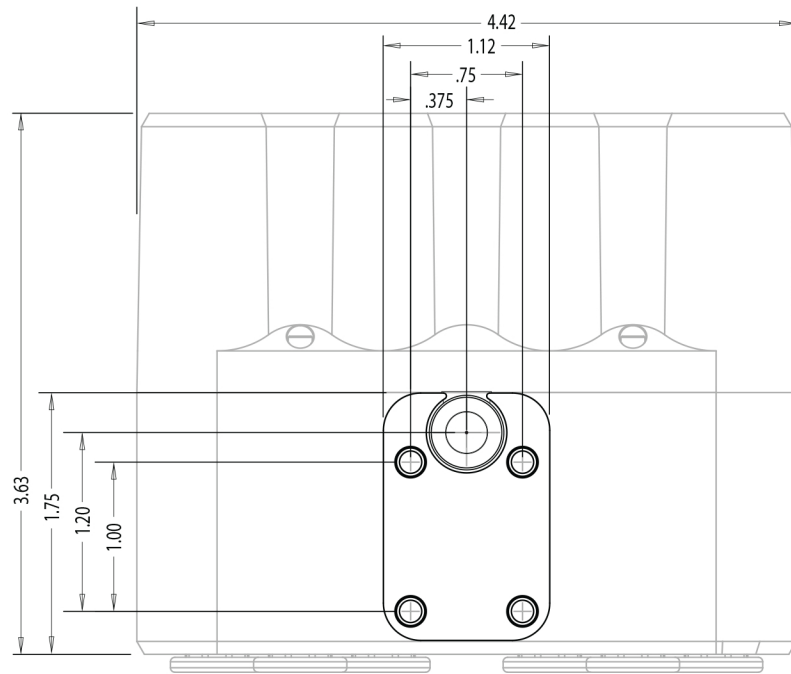
## NEXT GENERATION 2-CORNER VALVE



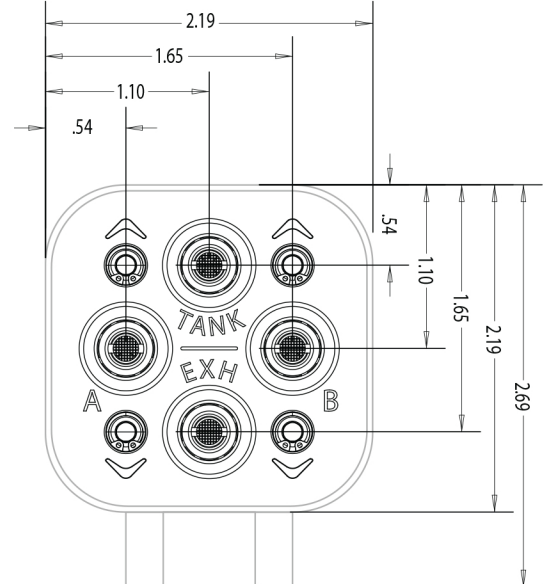
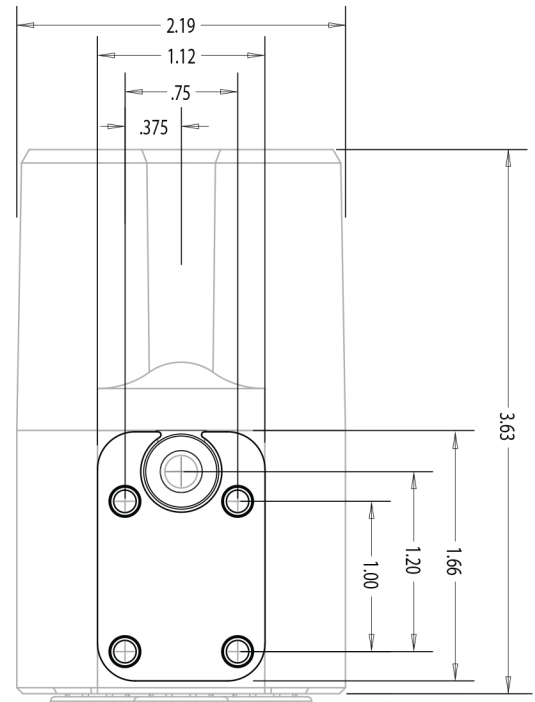
# VX4™ / VX2™ DATA SHEET

TECHNICAL SPECIFICATIONS	AA-VX4	AA-VX2
Compatible Suspension Type	4-Corner Full Air Suspension (any brand, any vehicle)	2-Corner Full Air Suspension (any brand, any vehicle)
Voltage Requirements	9.5-16 Volts	9.5-16 Volts
Current Requirements	1.1 Amps (for each of the 8 solenoids)	1.1 Amps (for each of the 4 solenoids)
Connectors	IP67 Certified (immersion up to 3 ft)	IP67 Certified (immersion up to 3 ft)
Fitting Size	3/8" D.O.T. / P.T.C. (x8)	3/8" D.O.T. / P.T.C. (x8)
No. of Air Spring Ports	4	2
No. of Inlets Ports	2	1
No. of Exhaust Ports	2	1
Max Operating Pressure	200 psi	200 psi
Cv Flow Factor (at maximum flow setting)	0.25 (for each of the 8 solenoids)	0.25 (for each of the 4 solenoids)
Average Adjustment Time (at maximum flow setting)	~2.2 Seconds (10% to 50% of travel)	~2.2 Seconds (10% to 50% of travel)

## VX4™



## VX2™



DIMENSIONS IN INCHES (NOT TO SCALE)

# VX4™ / VX2™ DATA SHEET



VX4™ / VX2™ WIRING HARNESS DIAGRAM

