

INSTRUCTION

910-32000 11" BRAKE KIT: 1954-56 FORD

©Speedway Motors, Inc. 2017

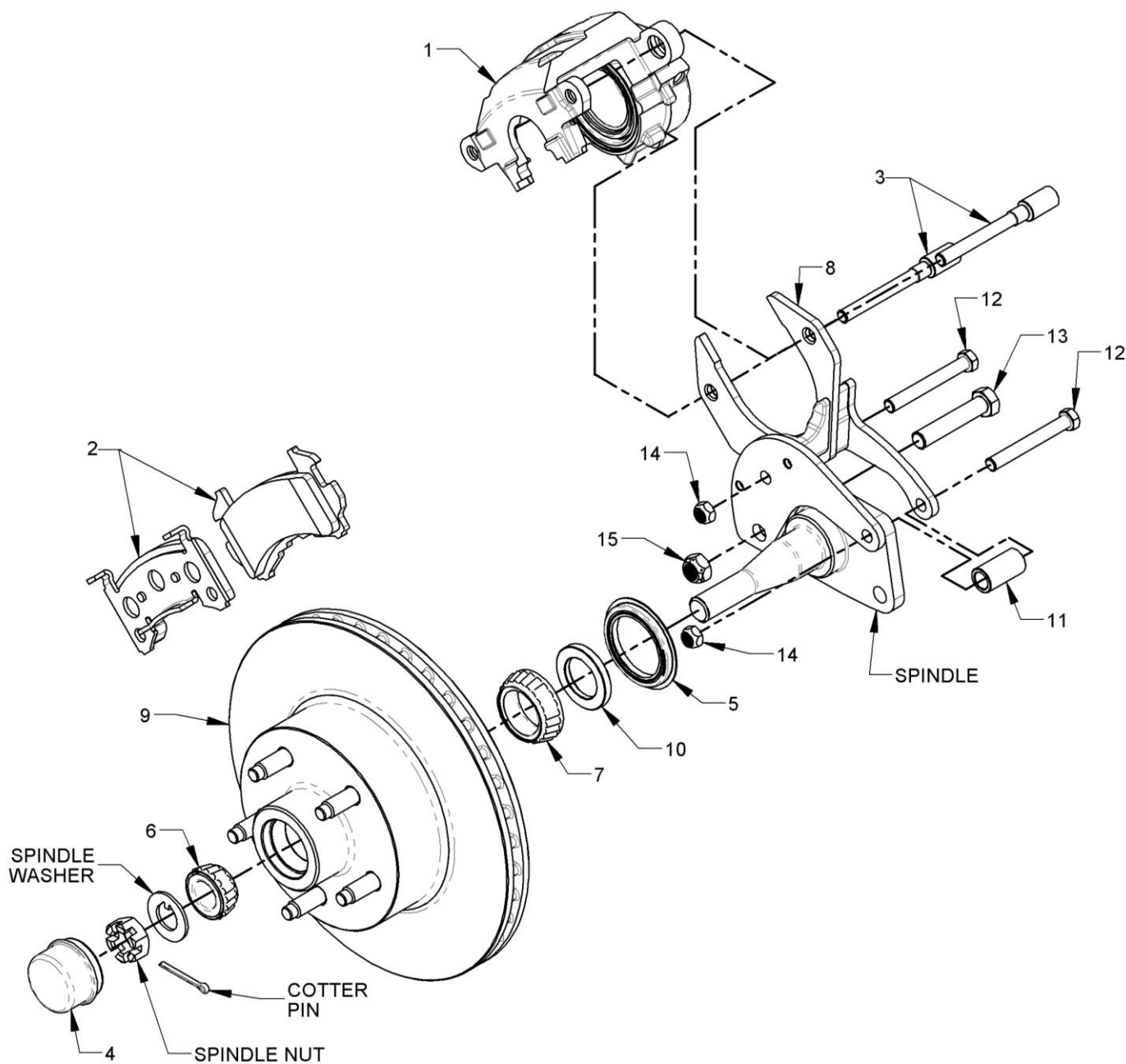
Parts List

Index #	Description	Part #	Quantity
1	Metric Caliper, Right	91031045-R	1
Not shown	Metric Caliper, Left	91031045-L	1
2	Pads, Metric Brake Caliper	9193381	1
3	Slide Bolt, GM Caliper	8352300542	4
Not shown	Hoses, Rubber Brake Line, Pair	6178568	1
Not shown	Washer, Crush, 5 Pack	6173513	1
Not shown	Retaining Tab, Rubber Brake Line, Pair	91031311	1
4	Dust Cap, Wheel Hub, Pair	91031071	1
5	Seal, Hub	912S19221	2
6	Bearing, Outer Cone	912TLM12749	2
7	Bearing, Inner Cone	912TL68149	2
Not shown	Bracket, Brake Caliper, Left	91032000.1-L	1
8	Bracket, Brake Caliper, Right	91032000.1-R	1
9	Rotor, 54-56 Ford	91032000.2	2
10	Spacer, Bearing	91032000.3	2
11	Spacer, Bracket	91032000.4	2
12	Bolt, 3/8-24 x 3" lg.	HZ5HCSF-.38-3.00	4
13	Bolt, 1/2-20 x 2-1/2" lg.	HZ5HCSF-.50-2.50	2
14	Lock Nut, 3/8-24	HZ8HLNF-.38	4
15	Lock Nut, 1/2-20	HZ8HLNF-.50	2

BRAKE INSTALLATION ALERT: The selection and installation of brake components should only be done by personnel experienced in the proper installation and operation of braking systems. The installer must use his/her own discretion to determine the suitability of the brake components and brake kits for every particular application. Speedway Motors, Inc. makes no warranties, either expressed or implied, including any warranty of merchantability or fitness for a particular purpose, other than those contained in its current catalog or website with respect to the goods identified on the face of the invoice. There is no warranty expressed or implied as to whether the goods sold hereby will protect the purchaser or ultimate user of such goods from injury or death.

1. Using the parts list supplied double check that you received all the parts in this kit. If there are any missing parts, please contact the customer service department.
2. Support the car on jack stands or hoist. Remove the front tires and brakes.
3. Install the caliper bracket so the caliper mounts behind candlestick. Bolt the caliper bracket to the inside of the spindle using 3/8" x 3" lg. bolts (#12), nuts (#14) and spacer (#11). Install steering arm and supplied 1/2 x 2-1/2" lg. bolt (#13) and nut (#15).
4. Carefully press the bearing spacer (#10) onto the spindle, **making sure the large ID chamfer goes towards the spindle**. Make sure the adapter is fully seated against the spindle.

5. Pack inner bearing (#7) with grease and install into rotor (#9). Install the hub seal (#5).
6. Install rotor (#9) on spindle, pack outer bearing (#6) with grease and install.
7. Install spindle washer and nut. Tighten nut and adjust bearing preload as normal. Install cotter pin and press on dust cap (#4).
8. Install caliper (#1) and brake pads (#2) on to the bracket (#8). Attach with slide bolts (#12).
9. Install new brake line, crush washer, and retaining tab. Make sure brake line has clearance through the entire suspension travel and turning radius.
10. Repeat instructions #1 through #9 for the other side. Bleed the system as normal.
11. Before operating the vehicle test the vehicle under a controlled condition. Make several stops in a safe area from low speeds and gradually working up to operating speeds.



IMPORTANT

DISCLAIMER

In an effort to offer our customers the low prices, quick service and great value, Speedway Motors reserves the right to change suppliers, specifications, colors, prices, materials. Each of the previous items is subject to change without notice. Speedway is not responsible for any typographical errors or misinterpretations. Quantities are limited on some items.

WARRANTY DISCLAIMER

The purchaser understands and recognizes that racing parts, specialized street rod equipment, and all parts and services sold by Speedway Motors, Inc. are exposed to many and varied conditions due to the manner in which they are installed and used. Speedway Motors, Inc. makes no warranties, either express or implied, including any warranty of merchantability or fitness for a particular purpose other than those contained in its current catalog with respect to the goods identified on the face of the invoice. There is no warranty expressed or implied as to whether the goods sold hereby will protect purchaser or ultimate user of such goods from injury or death. Speedway Motors assumes no liability after this period.

BRAKE INSTALLATION ALERT

The selection and installation of brake components should only be done by personnel experienced in the proper installation and operation of braking systems. The installer must use his/her own discretion to determine the suitability of all brake components and brake kits for every particular application. Speedway Motors, Inc. makes no warranties either expressed or implied including any warranty of merchantability or fitness for a particular purpose, other than those contained in its current catalog or website with respect to the goods identified on the face of the invoice. There is no warranty expressed or implied as to whether the goods sold hereby will protect the purchaser or ultimate user of such goods from injury or death.

DAMAGE CLAIMS

Always inspect your package upon delivery. Inspect all packages in the presence of the delivery driver. The driver must note any damage. Ask the driver the Carrier's procedures for handling damage claims. You must hold the original box, packing material and damaged merchandise for inspection or the carrier will not honor the claim. Notify Speedway Motors customer service department for instructions on returning damaged goods. Speedway is not responsible if no notification is given within 5 days of receipt.

SHORTAGES

Always check the contents of your delivery to insure all the parts that you ordered were received. Please read the invoice. Double check all packing materials, small items may be wrapped inside with these products. Shortages may occur from damage to the box, so save all packing materials. Inspect the box for holes that would allow parts to fall out. If you are missing any item(s) be sure to check your invoice for back orders or canceled items before calling the customer service department. If Speedway has to split a shipment into multiple boxes, packages may be delivered on different days. You need to contact the customer service department within 5 days of delivery to assure the prompt replacement. Speedway Motors assumes no liability after this period.

REFUSALS

All refused COD customers will be billed a 15% restocking charge plus freight to and from the destination! If you have questions please contact Speedway's customer service department.

WARRANTY CLAIMS

If an item has a manufacturer's warranty as being free from defects we will exchange only. If the item has been used and you are requesting warranty work, this may take up to 30 days as warranty work is done by the manufacturer NOT Speedway Motors. If you have any questions please contact customer service.

RETURNS

Speedway wants you to be satisfied with your purchase. If within 30 days after you receive your shipment you are not satisfied, you may return the item for refund or exchange. All exchanged or returned merchandise must be in original factory condition with no modifications or alterations. Returned merchandise must include all packaging materials, warranty cards, manuals, and accessories. If the items being returned need to be repackaged there will be a re-packing charge. Re-pack the item in a sturdy box and include a copy of your invoice and complete the form on the back of the invoice. You must ship orders back **PRE-PAID. WE DO NOT ACCEPT COD SHIPMENTS**. All exchanges need to have reshipping charges included. Items that are returned after 30 days are subject to 15% restocking charges. All fiberglass returned will have 15% restocking charge. No returns on electrical parts, video tapes, and books. Absolutely no returns on special order or closeout merchandise.

FREE CATALOGS

All Speedway catalogs are available online at SpeedwayMotors.com

Some items are not legal for sale or use in California on pollution controlled motor vehicles. These items are legal in California for racing vehicles only which may never be used upon a highway.

Speedway Motors Inc.,

P.O. Box 81906

Lincoln, NE 68501

800.979.0122 SpeedwayMotors.com



© 2017, Speedway Motors, Inc.