

# INSTRUCTIONS

910-32122

Speedway Motors, inc. April, ©2007

## '42 TO '48 FORD KINGPIN KIT INSTALLATION

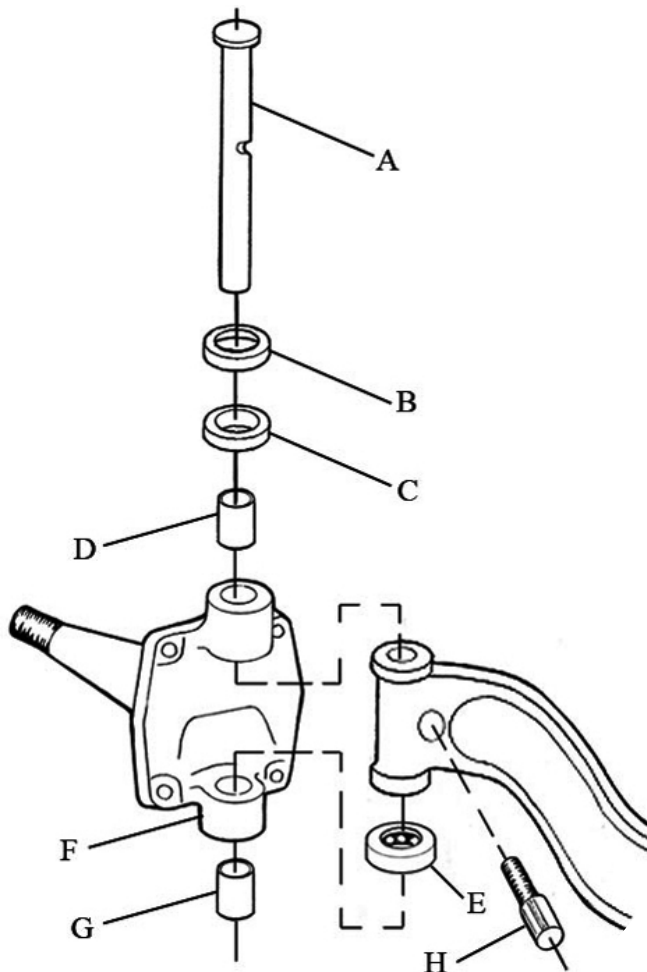
**WARNING:** Support the vehicle securely with frame on jackstands. Never work under a car supported only by a jack. Failure to provide proper support may result in serious injury or possible death.

1. Remove wheels, tires, steering arm and brake components from spindle.
2. Remove nut from kingpin lock bolt and drive out lock bolt with a brass hammer or drift. Remove grease zerks.
3. Working from the bottom of spindle, use a hammer and suitable drift to drive kingpin up out of spindle/axle. Remove spindle noting the location of the thrust bearing and / or any shims (if used) to ensure proper reassembly.

**NOTE:** If kingpin is seized in axle and cannot be driven out, soak with penetrating oil and try again in 24 hours. If still unsuccessful, remove the axle assembly from vehicle and have kingpin pressed out. It is not recommended to use heat to free kingpin from axle boss. Excessive heat can deform or embrittle the axle boss and spindle.

4. Thoroughly clean and inspect spindle and axle for signs of damage, scoring, or cracks. The new kingpin should be a snug fit in the axle bore and not have any play. If it is tight the bore can be cleaned up lightly with a brake hone. If there is excessive play the axle will have to be removed and reamed for oversized kingpin and bushings.

**NOTE:** Replacement of the bushings requires specialized equipment. The bushings must be reamed to final size after installation. It is recommended that the spindles be taken to a competent machinist for this work.



A - Kingpin	E - Thrust bearing
B - Cup washer	F - Spindle
C - Felt seal ring	G - Lower kingpin bushing
D - Upper kingpin bushing	H - Tapered lock pin

5. Using a suitable arbor, remove old bushings and press new bushings into the spindle, aligning the grease hole of the bushing with the grease zerk hole in the spindle.
- IMPORTANT!** Incorrect installation of bushings will cause premature wear of kingpin and bushings.
6. Align hone/ream both bushings in unison for a final clearance of .001" to .0015".
  7. Pack new thrust bearings with quality bearing grease. Install new grease zerk fittings.
  8. Insert old kingpin up through lower arm of spindle approximately 1". Install the thrust bearing on kingpin with metal dust shield up toward the bottom of axle boss. (Some applications may require a spacer on top of the thrust bearing). Position spindle on axle, sliding kingpin up into axle boss. Measure clearance between the top of axle boss to under side of upper arm of spindle. If gap is greater than .015" add shim(s) as necessary to obtain proper clearance (.005" - .015").
  9. Install cup washer on kingpin with flat side against head of kingpin. Place felt washer on kingpin and slide up into open side of cup washer.
  10. Orient notch of new kingpin toward center of axle and push kingpin down through shims and top arm of spindle, aligning the notch in the kingpin with the lock pin hole.
  11. Install lock pin (flat of pin engaged in kingpin notch) and nut. Torque nut to 25 ft lbs.
  12. Repeat for other side of vehicle.
  13. Install steering arms, brake components, wheels and tires.
  14. Grease spindle bushings and perform front end alignment.

# IMPORTANT

**DISCLAIMER** In an effort to offer our customers the low prices, quick service and great value, Speedway Motors reserves the right to change suppliers, specifications, colors, prices, materials. Each of the previous items is subject to change without notice. Speedway is not responsible for any typographical errors or misinterpretations. Quantities are limited on some items.

**WARRANTY DISCLAIMER** The purchaser understands and recognizes that racing parts, specialized street rod equipment, and all parts and services sold by Speedway Motors, Inc. are exposed to many and varied conditions due to the manner in which they are installed and used. Speedway Motors, Inc. makes no warranties, either express or implied, including any warranty of merchantability or fitness for a particular purpose other than those contained in its current catalog with respect to the goods identified on the face of the invoice. There is no warranty expressed or implied as to whether the goods sold hereby will protect purchaser or ultimate user of such goods from injury or death. Speedway Motors assumes no liability after this period.

**DAMAGE CLAIMS** Always inspect your package upon delivery. Inspect all packages in the presence of the delivery driver. The driver must note any damage. Ask the driver the Carrier's procedures for handling damage claims. You must hold the original box, packing material and damaged merchandise for inspection or the carrier will not honor the claim. Notify Speedway Motors customer service department for instructions on returning damaged goods. Speedway is not responsible if no notification is given within 5 days of receipt.

**SHORTAGES** Always check the contents of your delivery to insure all the parts that you ordered were received. Please read the invoice. Double check all packing materials, small items may be wrapped inside with these products. Shortages may occur from damage to the box, so save all packing materials. Inspect the box for holes that would allow parts to fall out. If you are missing any item(s) be sure to check your invoice for back orders or canceled items before calling the customer service department. If Speedway has to split a shipment into multiple boxes, packages may be delivered on different days. You need to contact the customer service department within 5 days of delivery to assure the prompt replacement. Speedway Motors assumes no liability after this period.

**REFUSALS** All refused COD customers will be billed a 15% restocking

charge plus freight to and from the destination! If you have questions please contact Speedway's customer service department.

**WARRANTY CLAIMS** If an item has a manufacturer's warranty as being free from defects we will exchange only. If the item has been used and you are requesting warranty work, this may take up to 30 days as warranty work is done by the manufacturer NOT Speedway Motors. If you have any questions please contact customer service.

**RETURNS** Speedway wants you to be satisfied with your purchase. If within 30 days after you receive your shipment you are not satisfied, you may return the item for refund or exchange. All exchanged or returned merchandise must be in original factory condition with no modifications or alterations. Returned merchandise must include all packaging materials, warranty cards, manuals, and accessories. If the items being returned need to be repackaged there will be a re-packing charge. Re-pack the item in a sturdy box and include a copy of your invoice and complete the form on the back of the invoice. You must ship orders back **PRE-PAID. WE DO NOT ACCEPT COD SHIPMENTS.** All exchanges need to have reshipping charges included. Items that are returned after 30 days are subject to 15% restocking charges. All fiberglass returned will have 15% restocking charge. No returns on electrical parts, video tapes, and books. Absolutely no returns on special order or close out merchandise.

**FREE CATALOGS** Speedway Motors offers FREE catalogs for Race, Street, Sprint and Midget, Sport Compact and Pedal Car restoration.

**\*\*Some items are not legal for sale or use in California on pollution controlled motor vehicles. These items are legal in California for racing vehicles only which may never be used upon a highway.**



**Speedway Motors Inc., P.O. Box 81906  
Lincoln, NE 68501 (402) 323-3200  
www.speedwaymotors.com**