



350 S. St. Charles St. Jasper, In. 47546
Ph. 812.482.2932 Fax 812.634.6632
www.ridetech.com

Part # 11331099
63-87 Chevy C10 Front CoolRide Kit
For Use w/ Stock Lower Arms

Components:

2	90006873	Front air springs – 224C
2	90000060	Upper air spring plate
2	90000057	Lower air spring cup bracket
2	90001083	Medium bump stops – 1.5" tall
1	90000293	Driver side steering stop
1	90000294	Passenger side steering stop

Hardware Kit:

16	99372002	3/8" USS Nylok nut	Air spring mounts
2	99371001	3/8" x 3/4" USS bolt	Air spring to lower cup bracket
2	99373005	3/8" lock washer	Air spring to lower cup bracket
4	99371003	3/8" x 1" USS bolt	Steering stop to lower arm
8	99371004	3/8" x 1 1/4" USS bolt	Upper mount to frame
30	99373003	3/8" SAE flat washer	

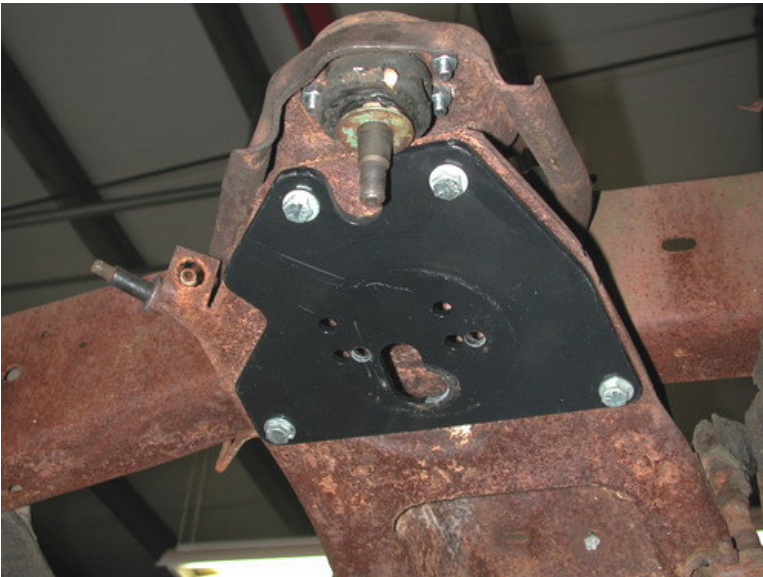
COOLRiDE[®]

by Air Ride Technologies

Installation Instructions

*****Must be used w/ RideTech shock kit*****

1. Raise and support truck at a safe, comfortable working height. Let the front suspension hang freely.
2. Remove coil spring, shock absorber and bump stop. Refer to factory service manual for proper disassembly procedure.



3. Hold the upper plate to the cross member as shown in the picture to the left and clamp to frame. Using the plate as a template drill 4 holes in the cross member.

4. Apply thread sealant to the air fitting and thread into the air spring. Remove the upper plate from the frame and place onto the studs on the top of the air spring. The holes are lettered; slide the plate to position B moving the air spring to the rear of the vehicle. Secure with flat washers and nyloc nuts. Route airline.



5. Bolt the lower bracket to the air spring using a 3/8" x 3/4" bolt, lock washer and flat washer.

6. Attach the air spring assembly to the frame using 3/8" x 1 1/4" bolts, Nylok nuts and flat washers supplied. The lower mount will simply sit in the coil spring pocket. It does not need to be attached.

7. Replace the factory shock, with the new ones supplied.

8. Bolt the steering stop to the lower arm. Check air spring clearance with the caliper at full lock. The air spring should be about 5" tall at ride height.

DO NOT ALLOW THE AIR SPRING TO RUB. THIS WILL DAMAGE THE AIR SPRING AND IS NOT A WARRANTABLE SITUATION.