

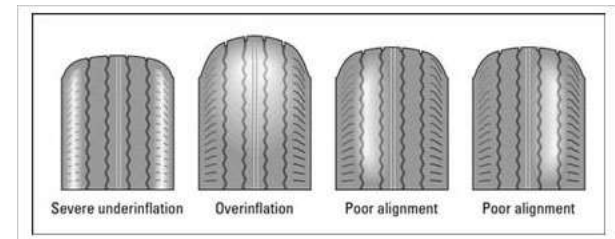


QuickTrick™ RV4WD System

Assembly Instructions

Visual Instructions are on YouTube:

Channel: MrQuick Trick



Components

Left Vertical

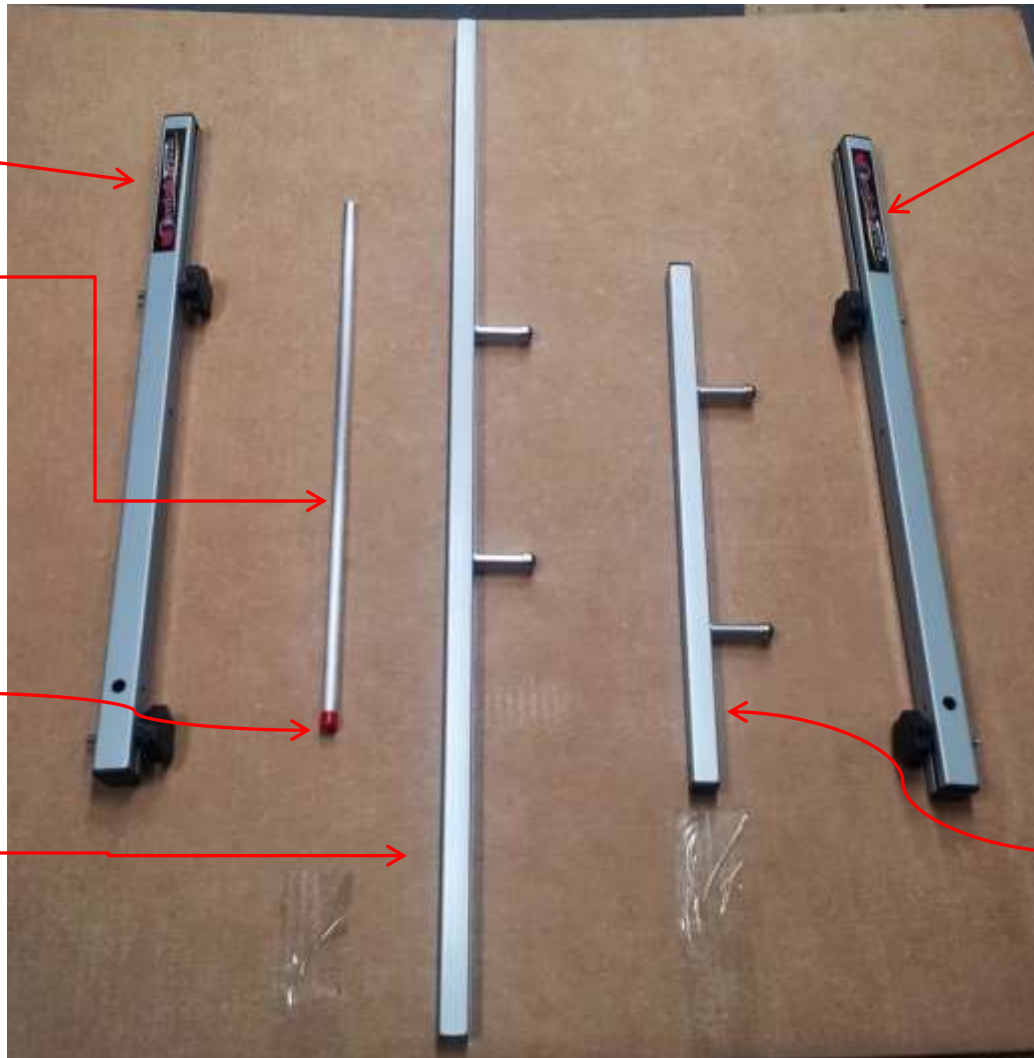
Stabilizer

Stabilizer End Cap

Toe Bar

Right Vertical

Upper Contact Bar

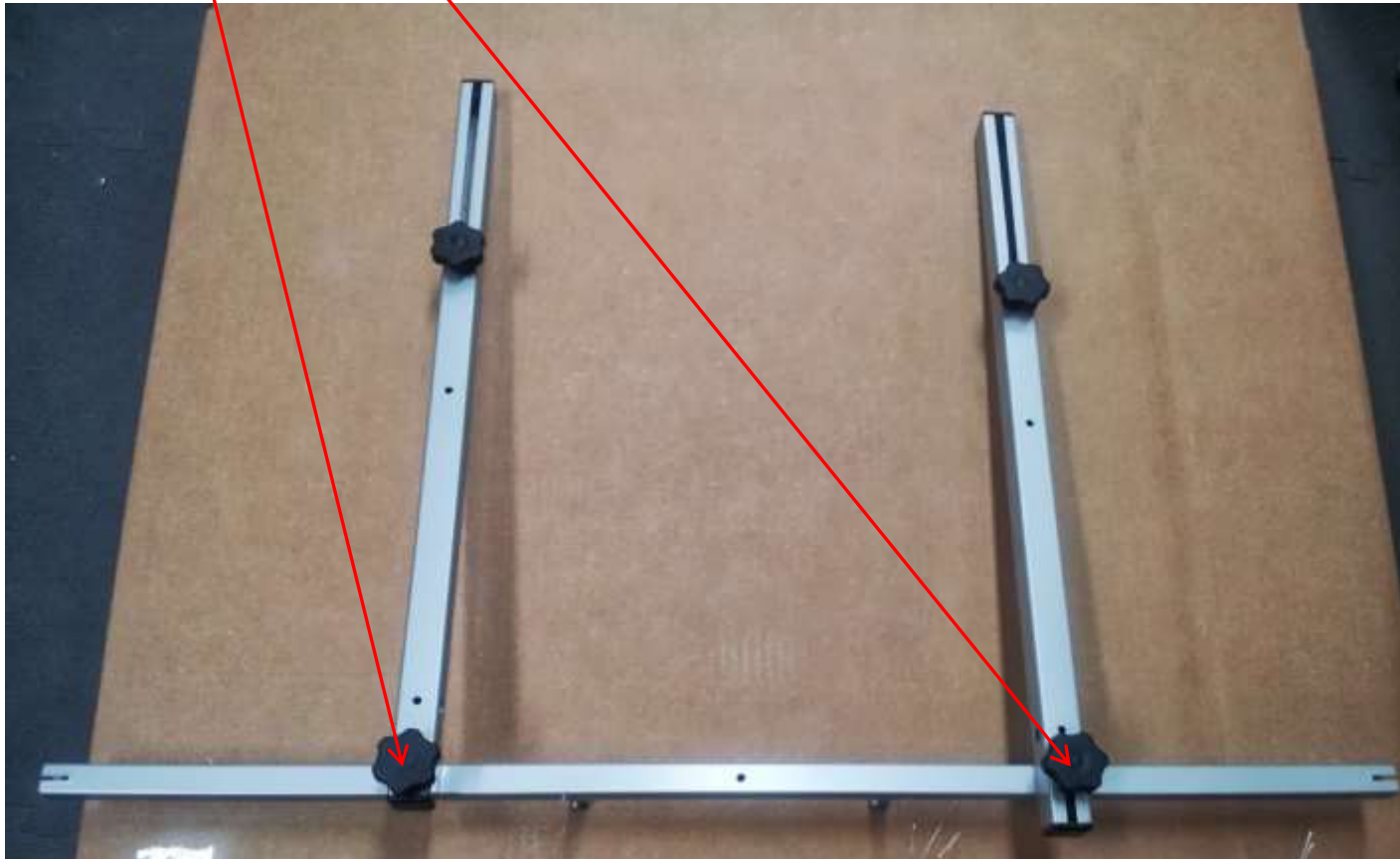


Accessories

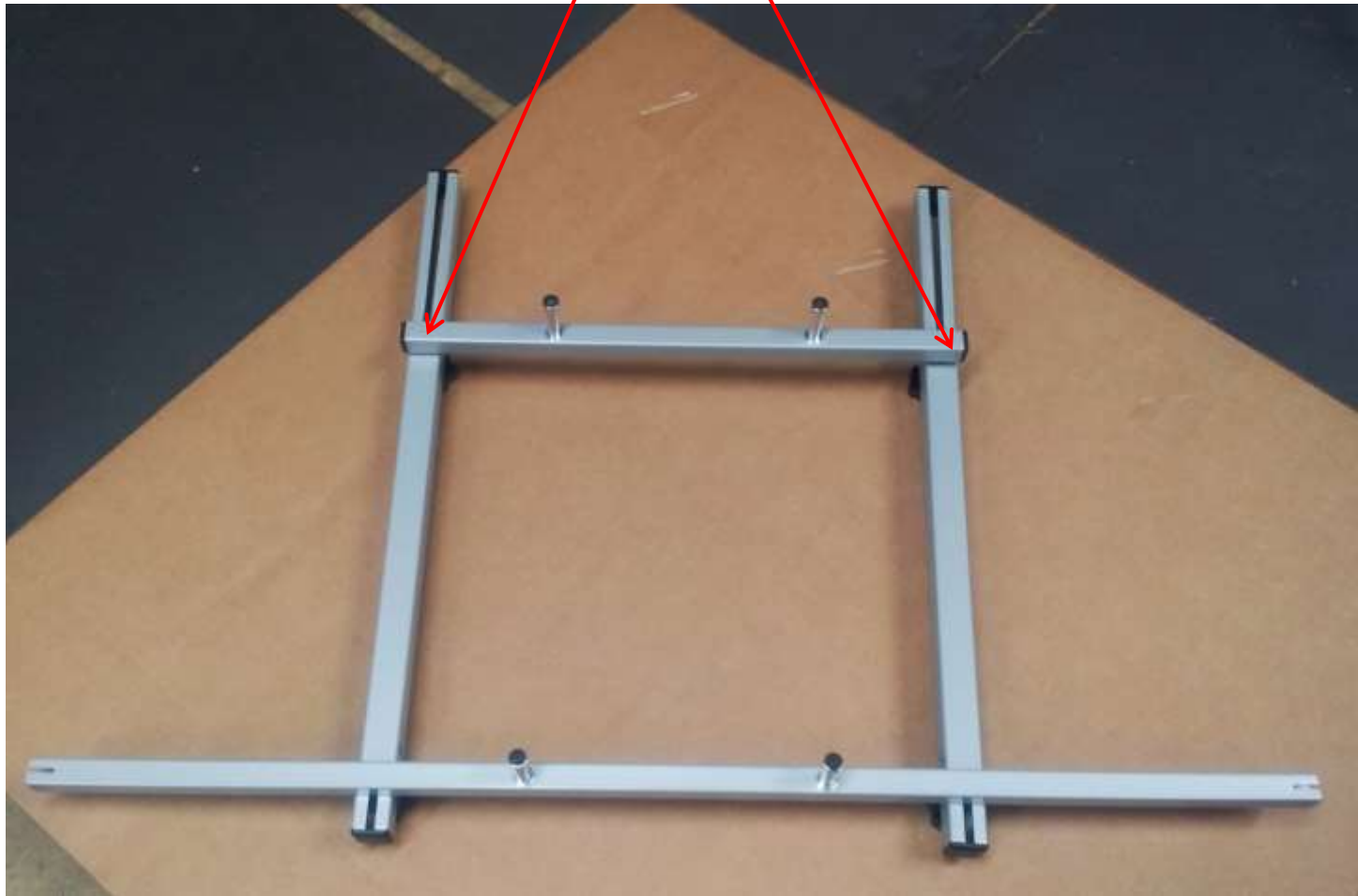


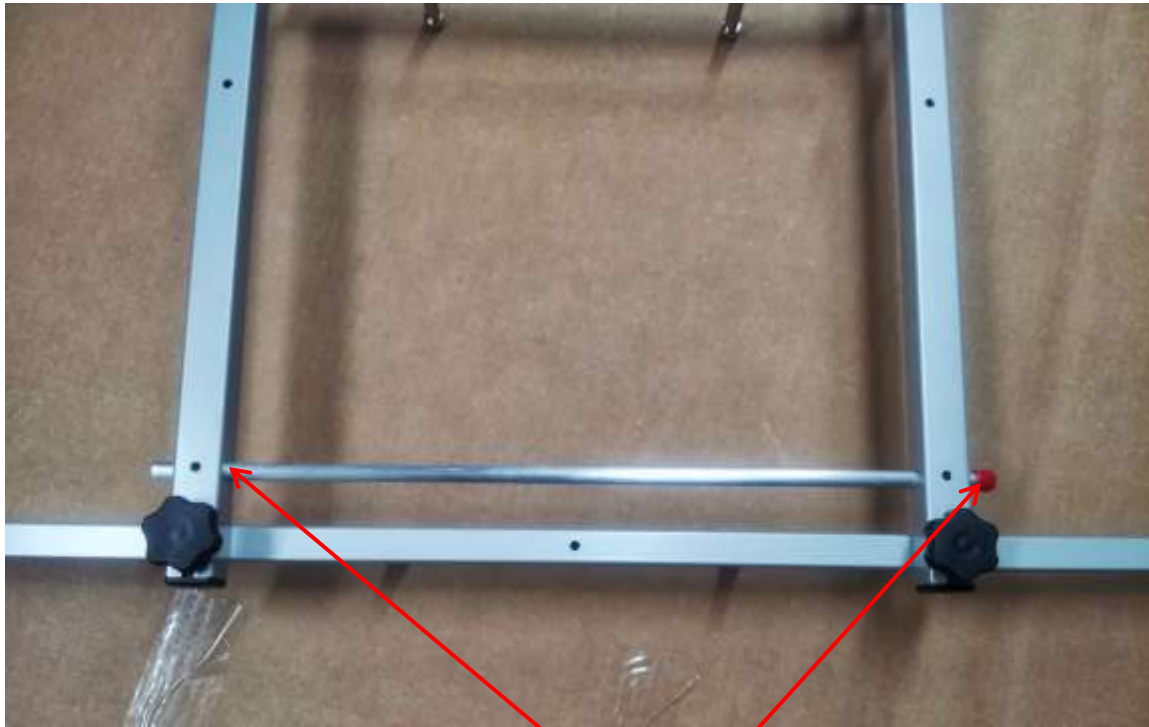
QT Tape Measures
Gauge
Allen Wrench
Magnets OR Pins

Attach the Left & Right Vertical to the Toe Bar
& Tighten knobs so all bars are flush to each
other



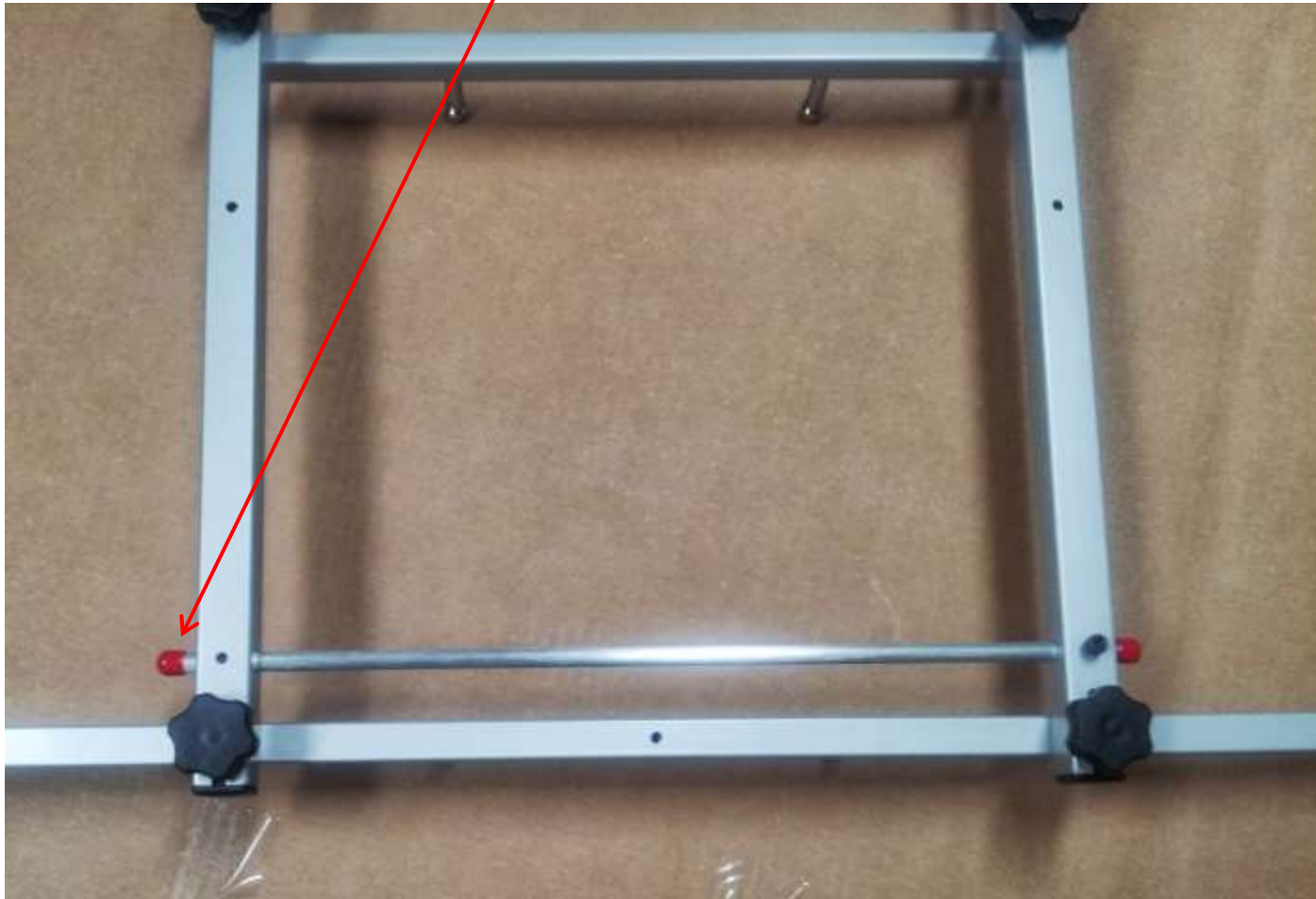
Attach Upper Contact Bar using Upper Knobs & tighten until all bars are flush



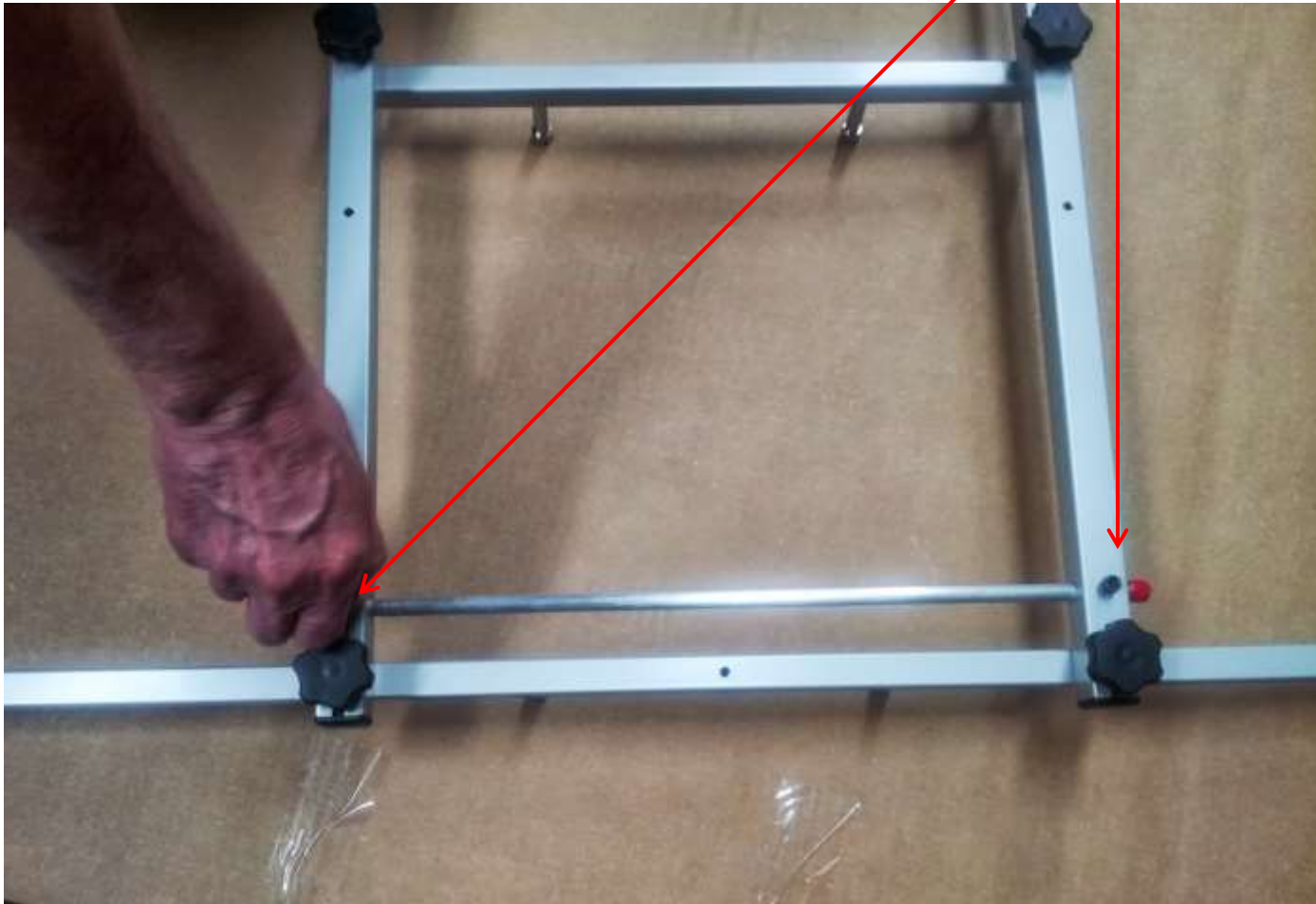


Slide Stabilizer Through holes on Right & Left
Verticals

Place Stabilizer End Cap on uncapped end



Using the Allen Wrench, tighten the bolts to hold the stabilizer in place



Use your sliders to adjust the wheel size & you are ready to measure





Alignment Simple Solutions

106E David Green Rd

Birmingham, AL 35244 USA

205-475-2419

www.quicktrickalignment.com

sales@quicktrickalignment.com