



GM III CALIPER

Caliper Highlights:

Wilwood's **GM III** caliper represents the latest refinements in caliper design and manufacturing through use of solid modeling and stress simulation programs. The result is the most rigid, highest torque, lightweight aluminum caliper in its class.

The real strength comes from its exclusive triple bridge configuration which provides a tremendous increase in clamping force over other twin bridge calipers. Efficient designs further maximize weight savings: Material is properly placed to fortify all load bearing points. Each caliper model has its own unique casting: 2.38" diameter piston calipers incorporate a smaller external contour than the larger 2.75" diameter piston calipers. Any material that did not contribute to strength, was eliminated for weight reduction, resulting in a caliper that weighs just over three pounds.



The GM III incorporates standard Wilwood features like stainless steel pistons for increased fluid protection and high temperature seals for controlled retraction which provides improved driver feel.

These tight grained, high density aircraft alloy aluminum castings are fully machined, assembled and tested in-house by fully trained technicians at Wilwood to assure top quality and peak performance.

ORDERING INFORMATION:

<u>BORE SIZE</u>		<u>DISC WIDTH</u>		<u>PART NUMBER</u> ⁽¹⁾
2.75"	69,8 mm	1.25"	31,8 mm	120-5289
2.75"	69,8 mm	1.00"	25,4 mm	120-5861
2.75"	69,8 mm	.81"	20,6 mm	120-5288
2.38"	60,4 mm	1.25"	31,8 mm	120-5344
2.38"	60,4 mm	.81"	20,6 mm	120-5343

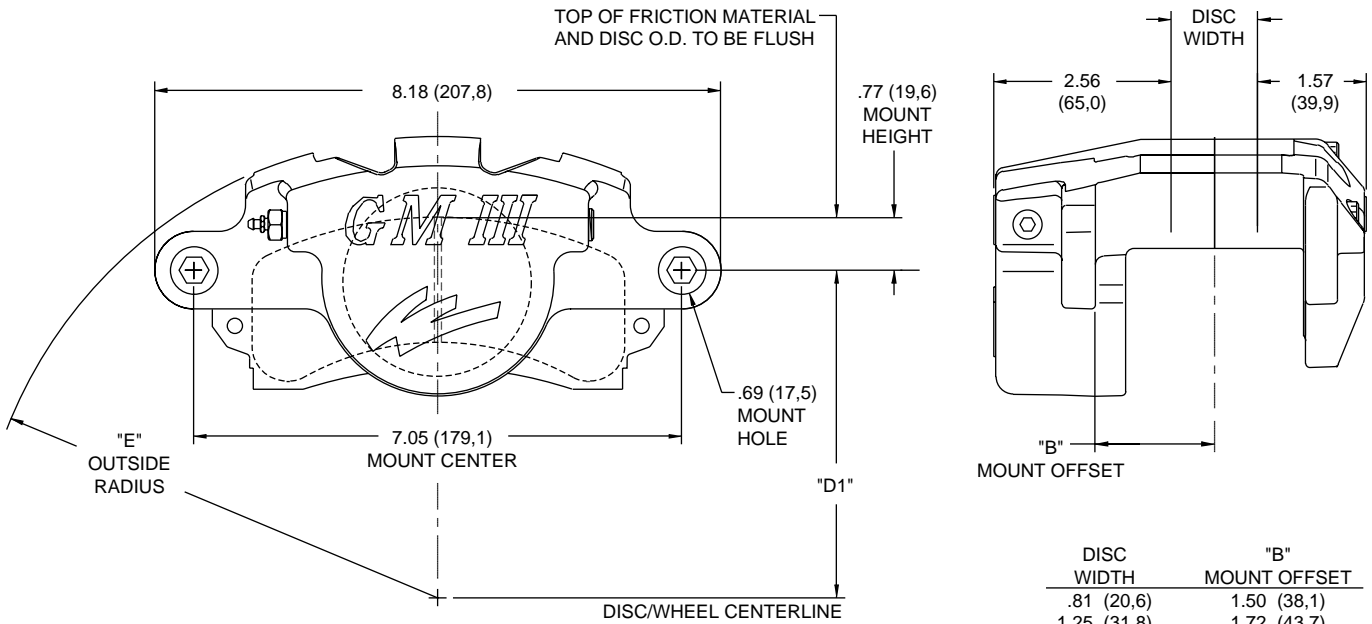
NOTE:

(1) PART NUMBERS ARE THE SAME FOR BOTH LEFT AND RIGHT HAND, SPECIFY WHEN ORDERING.

ORDERING INFORMATION: USER SERVICEABLE COMPONENTS:

<u>ASSEMBLY</u>	<u>INBOARD BODY</u>	<u>OUTBOARD BODY</u>	<u>PISTON</u>	<u>BLEED SCREW KIT (4 PK)</u>	<u>O-RING KIT (4 PK)</u>
120-5288	110-5285	110-5286	200-1120 (2.75")	220-0627	130-4955
120-5289	110-5285	110-5287	200-1120 (2.75")	220-0627	130-4955
120-5343	110-5342	110-5286	200-1119 (2.38")	220-0627	130-4956
120-5344	110-5342	110-5287	200-1119 (2.38")	220-0627	130-4956
120-5861	110-5857	110-5858	200-1120 (2.75")	220-0627	130-4956

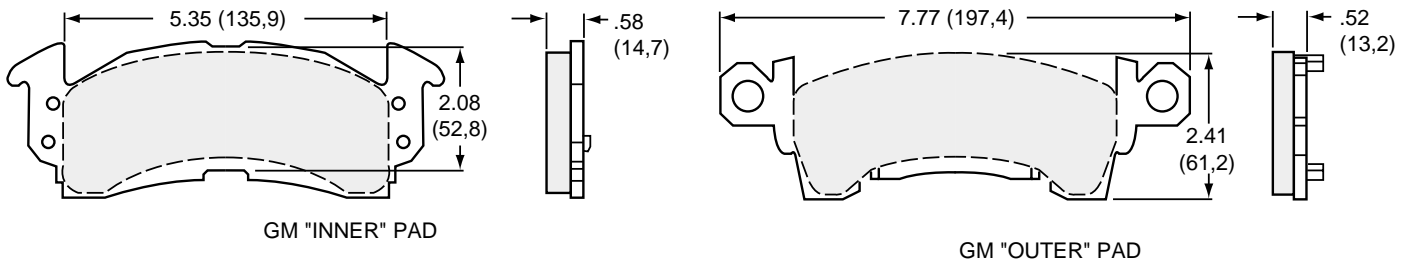
GM III CALIPER, MOUNTING DIMENSIONS



DIMENSION "D1" = (DISC DIAMETER/2) - .77 (19,6)
 CALIPER MOVES INWARD AS PAD WEARS, .35 (8,9) MAX

NOTE: RIGHT HAND CALIPER SHOWN, LEFT HAND HAS BLEED SCREW REVERSED

GM III CALIPER PAD SET, OVERALL DIMENSIONS, PART NUMBER (FOR AXLE SET) AND DESCRIPTION:



PART NO.

15A-5737K
 15B-3994K
 15C-4419K
 15D-4334K
 15T-5917K
 150-0509K
 150-2475K

PAD DESCRIPTION

Polymatrix "A" Type
 Polymatrix "B" Type
 Polymatrix "C" Type
 Polymatrix "D" Type
 Polymatrix "T" Type
 Cold Stoppers (Tan)
 Gator Pads (Green)



PAD SELECTION:

Proper selection of a brake pad compound is critical to disc brake system performance. Each material has specific torque and wear characteristics relative to its operating temperature. Track conditions and driving style can also influence pad requirements. For best performance, final selection of pad material often requires evaluation at the track over a range of actual race conditions. Please reference the brake pad pages (34-37) for descriptions of the various compounds available, or consult with the technical department at Wilwood for recommendations.