

Installation Instructions

I - Sheet Number I-B161933 Rev. A



Premium Style. Lasting Performance.

For proper installation and best possible fit, please read all instructions BEFORE you begin.
For technical assistance or to obtain missing parts, please call Customer Relations at 1-800-241-7219.

Para una instalación adecuada y el mejor ajuste posible, lea todas las instrucciones ANTES de comenzar.
Para obtener asistencia técnica o para obtener piezas que faltan, por favor llame a Relaciones con el cliente en 1-800-241-7219.

Pour une installation correcte et le meilleur ajustement possible, s'il vous plaît lire toutes les instructions AVANT de commencer.
Pour une assistance technique ou pour obtenir des pièces manquantes, s'il vous plaît communiquer avec les Relations à la clientèle au 1-800-241-7219.

Care and Cleaning

- **Wash only with mild soap & dry with a clean cloth.**
Lavar con jabón suave y seque con un paño limpio.
Laver avec un savon doux et séchez avec un chiffon propre.
- **Every 3 months or 5000 miles check the cover tension and all components for tightness.**
Revise cada 3 meses o 5,000 millas la tensión de la cubierta y todos los componentes estén ajustados.
Vérifiez tous les 3 mois ou 5000 miles la tension couvercle et le serrage des composants.

Congratulations!

You have purchased one of the many quality Lund® branded products offered by Lund International, Inc. We take the utmost pride in our products and want you to enjoy years of satisfaction from your investment. We have made every effort to ensure that your product is top quality in terms of fit, durability, finish and ease of installation.

Usted ha comprado uno de los muchos productos de calidad ofrecidos por Lund ® de marca productos ofrecidos por Lund International, Inc. Tomamos el orgullo extremo en nuestros productos y queremos que disfrute durante años de su inversión. Hemos hecho todos los lo posible para que su producto es de calidad superior en cuanto a ajuste, durabilidad, acabado y facilidad de la instalación.

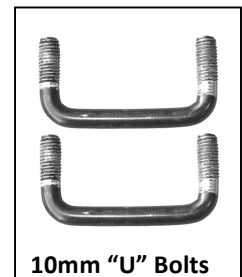
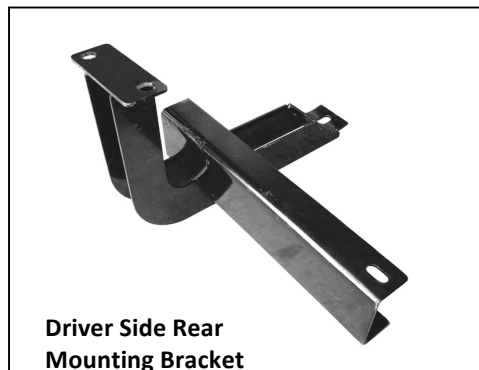
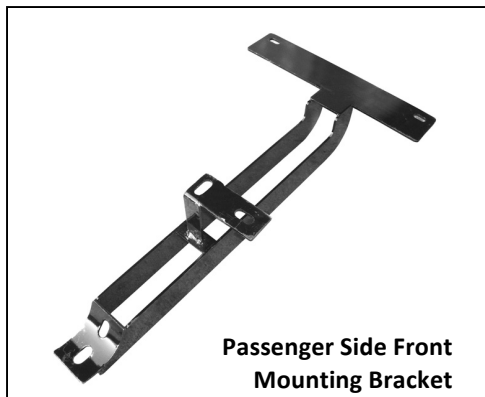
Vous avez acheté un des nombreux produits de qualité offerts par Lund ® marque produits offerts par Lund International, Inc Nous sommes extrêmement fiers de nos produits et souhaitons que vous tiriez des années de satisfaction de votre investissement. Nous avons pris toutes les efforts pour s'assurer que votre produit est de qualité supérieure en termes de durabilité, de finition et la facilité de l'installation.

Installation Instructions

Part # 23570619/ 23670619

PARTS LIST:

1	Driver/Left Sidebar	4	10mm ID x 20mm OD x 2mm Flat Washers
1	Passenger/Right Sidebar	2	8-1.25mm x 20mm Bolt Plate (35x20 plate size)
1	Driver/Left Front Mounting Bracket	8	8-1.25mm x 25mm Hex Head Bolts
1	Passenger/Right Front Mounting Bracket	10	8mm Lock Washers
1	Driver/Left Rear Mounting Bracket	2	8mm Hex Nuts
1	Passenger/Right Rear Mounting Bracket	10	8mm ID x 24mm OD x 2mm Flat Washers
2	10-1.50mm "U" Bolts	5	6-1.00mm x 25mm Hex Head Bolts
4	10mm Lock Washers	5	6mm Lock Washers
4	10mm Hex Nuts	5	6mm ID x 18mm OD x 1.6mm Flat Washers



PROCEDURE:

1. **REMOVE CONTENTS FROM BOX. VERIFY ALL PARTS ARE PRESENT. READ INSTRUCTIONS CAREFULLY BEFORE STARTING INSTALLATION. SOME CUTTING REQUIRED.**

Driver Side Front Mounting Bracket Installation:

2. Remove the factory screw on the inside of the frame rail located by the front of the vehicle (**Figure 1**).
3. In the same direction where the factory screw is located there is a plastic plug covering the factory hole in the side panel. Use a flat screw driver to remove the plastic plug (**Figure 1**). **NOTE:** This plastic plug is covered with tar and is very hard to find it. Push along the side panel until you feel a soft spot.
4. Insert one of the 8mm x 20mm Bolt Plates into the factory hole in the side panel (**Figure 2**).
5. Position Bracket up to the vehicle and inspect mounting area for excess rubber insulation. Remove excessive insulation as necessary to level mounting surface. Partially attach the outside of the Bracket to already inserted bolt plate using the included (1) 8mm Hex Nut, (1) 8mm Lock Washer, and (1) 8mm Flat Washer (**Figure 3 & 4**). **NOTE:** 04-05 Models mount in the hole towards the rear of the vehicle and 06-08 Models mount in the hole towards the front of the vehicle.
6. Attach the inside of the Bracket to previously removed factory bolt mounting location. Replace the factory bolt with the included (1) 6mm x 25mm Hex Head Bolt, (1) 6mm Lock Washer, and (1) 6mm Flat Washer (**Figure 3 & 5**). Do not tighten at this time.

Passenger Side Front Mounting Bracket Installation:

7. Remove the two factory bolts holding the outside of the heat shield (**Figure 6**). **NOTE:** You will be replacing these factory bolts with the included 6mm hardware.
8. Slightly pull down on the heat shield and place Bracket between the heat shield and the side rail. Temporarily install the Bracket without the heat shield with the included (2) 6mm x 25mm Hex Head Bolts, (2) 6mm Lock Washers, and (2) 6mm Flat Washers. Position Bracket up to the vehicle and inspect mounting area for excess rubber insulation. Remove excessive insulation as necessary to level mounting surface. Push back the heat shield until it reaches the Bracket and mark the cutting location on the heat shield (**Figure 7**).
9. Remove Bracket from vehicle and use a pair of sheet metal cutting scissors to cut out the marked location.
10. In the same direction where the front factory screw is located there is a plastic plug covering the factory hole in the side panel. Use a flat screw driver to remove the plastic plug (**Figure 6**). **NOTE:** This plastic plug is covered with tar and is very hard to find it. Push along the side panel until you feel a soft spot.
11. Insert one of the 8mm x 20mm Bolt Plates into the factory hole in the side panel (**Figure 8**).
12. Position Bracket up to the side rail and place heat shield over Bracket. Attach heat shield and Bracket to side rail using the hardware listed in step six (**Figure 9**).
13. Attach the outside of the Bracket to already inserted Bolt Plate using the included (1) 8mm Hex Nut, (1) 8mm Lock Washer, and (1) 8mm Flat Washer (**Figure 10**). Do not tighten at this time. **NOTE:** 04-05 Models mount in the hole towards the rear of the vehicle and 06-08 Models mount in the hole towards the front of the vehicle.

Rear Mounting Brackets Installation:

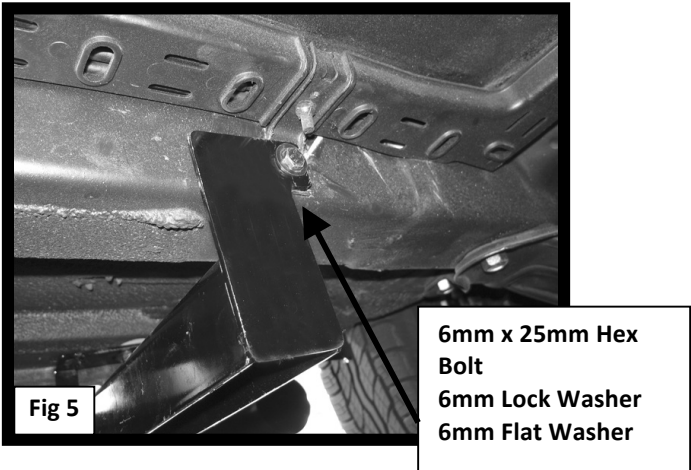
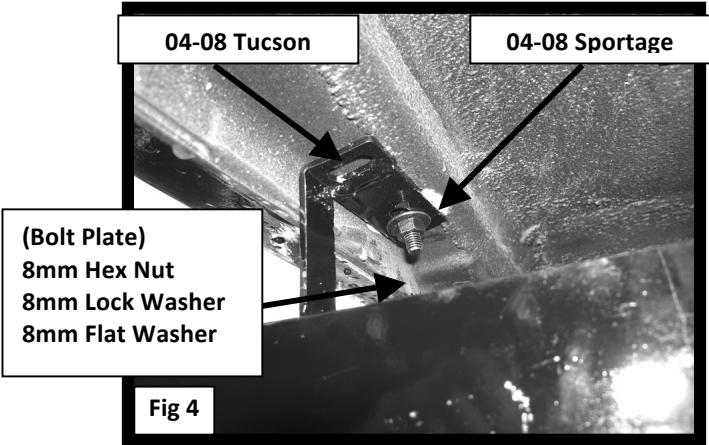
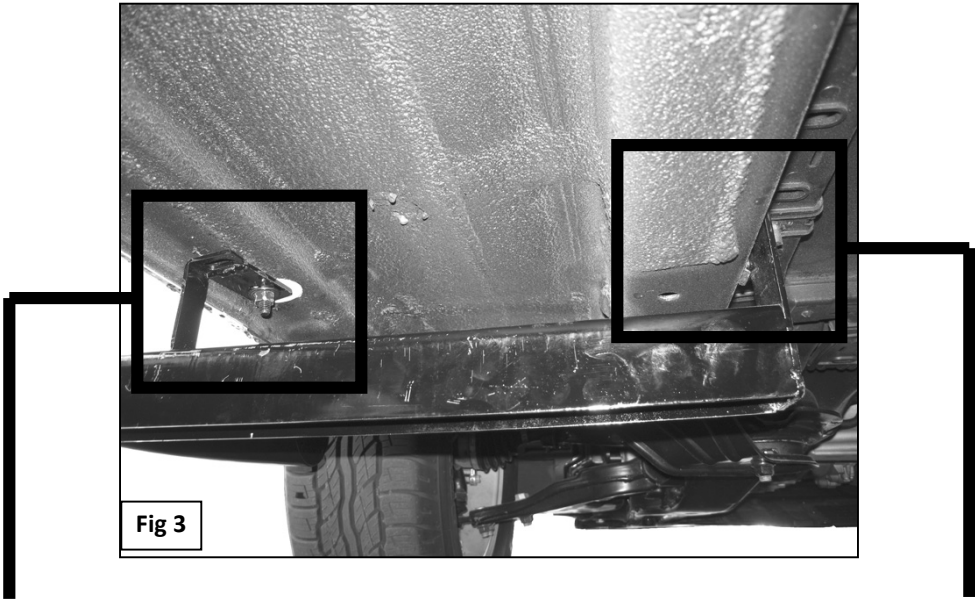
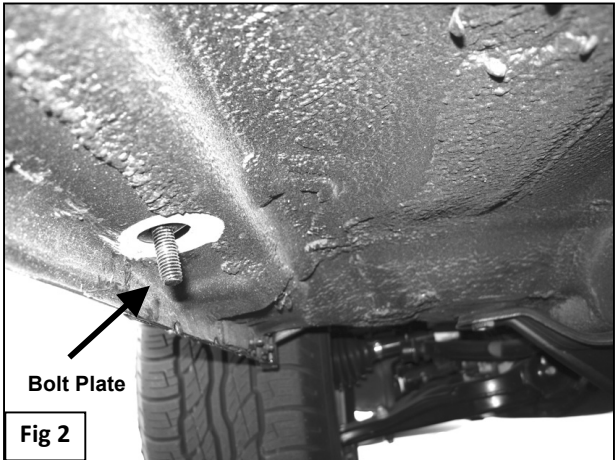
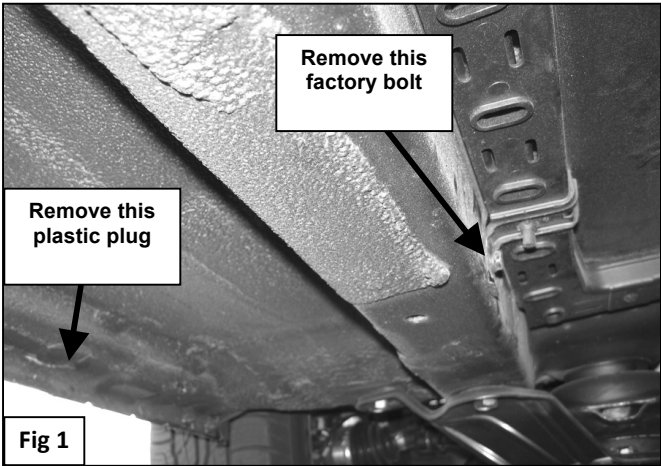
14. Starting on the driver side, remove the oval shape rubber plug and the round plastic plug located in the rear side of the floor panel (**Figure 11**). Use a flat screw driver to remove the plastic plug. **NOTE:** This plastic plug is covered with tar and is very hard to find it. Push on the rear side of the oval shape hole until you feel a soft spot.
15. Remove a factory bolt located in the side panel by the front of the oval shape hole. **NOTE:** You will be replacing this bolt with the included 6mm bolt. Remove edge from plastic tray as shown to clear Sidebar Bracket, (**Figure 12**).
16. Insert one of the included "U" Bolts through oval shape hole and round hole (**Figure 13**). Partially hang rear Mounting Bracket to already inserted "U" Bolt using the included (2) 10mm Hex Nuts, (2) 10mm Lock Washers, and (2) 10mm Flat Washers (**Figure 14**). Position Bracket up to the vehicle and inspect mounting area for excess rubber insulation. Remove excessive insulation as necessary to level mounting surface.
17. Attach the front end of the Mounting Bracket to threaded hole in the side panel using the included (1) 6mm x 25mm Hex Bolt, (1) 6mm Lock Washer, and (1) 6mm Flat Washer (**Figure 15**).
18. Position driver Sidebar onto Mounting Brackets and attach it using the included (4) 8mm x 25mm Hex Head Bolts, (4) 8mm Lock Washers, and (4) 8mm Flat Washers (**Figure 16**).
19. Level and adjust Sidebar properly; and then tighten all hardware at this time.
20. Repeat steps 13-18 for passenger side.

21. Do periodic inspections to the installation to make sure that all hardware is secure and tight.

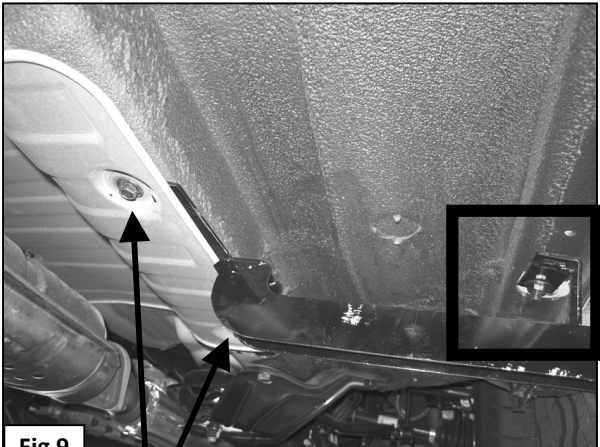
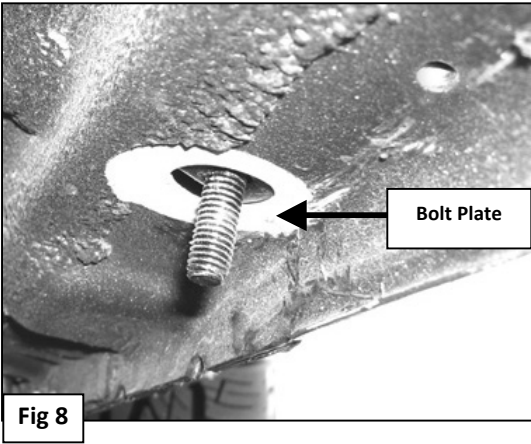
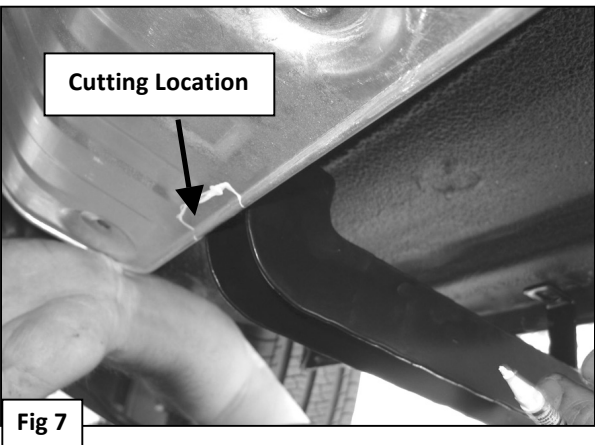
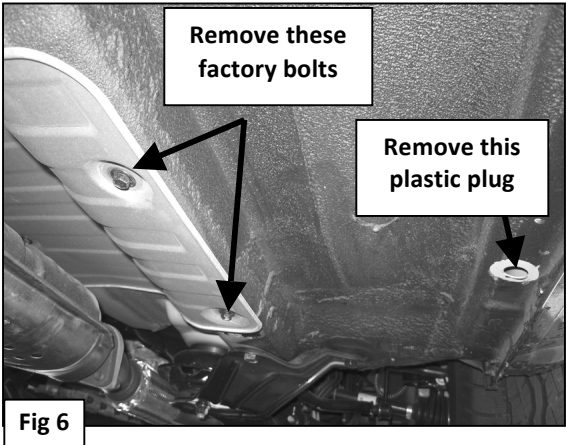
To protect your investment, wax this product after installing. Regular waxing is recommended to add a protective layer over the finish. Do not use any type of polish or wax that may contain abrasives that could damage the finish.
For stainless steel: Aluminum polish may be used to polish small scratches and scuffs on the finish. Mild soap may be used also to clean the Sidebar.
For gloss black finishes: Mild soap may be used to clean the Sidebar.

Driver Side Front Mounting Bracket Installation Shown

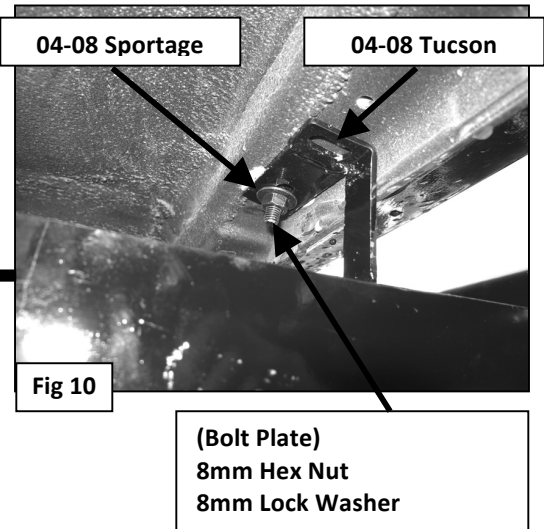
The tube in installation instruction is different from the one in reality. But the brackets and the installation method are same.



Passenger Side Front Mounting Bracket Installation Shown



6mm x 25mm Hex Bolts
6mm Lock Washers
6mm Flat Washers



Driver Side Rear Mounting Bracket Installation Shown

