



# DEFLECTA-SHIELD®

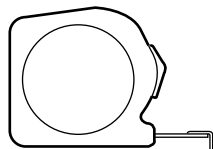
## ACCESSORIES

I-996A

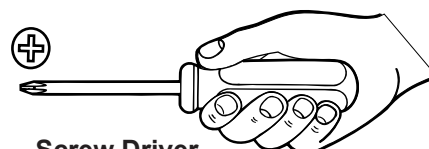
### INSTALLATION INSTRUCTIONS – KIT, HOOD DEFLECTOR

Thank you for purchasing a LUND accessory; designed, engineered and built specifically for your vehicle. We have made every effort to ensure that this hood deflector is top quality in terms of fit, durability, finish and ease of installation.

#### TOOLS NECESSARY:

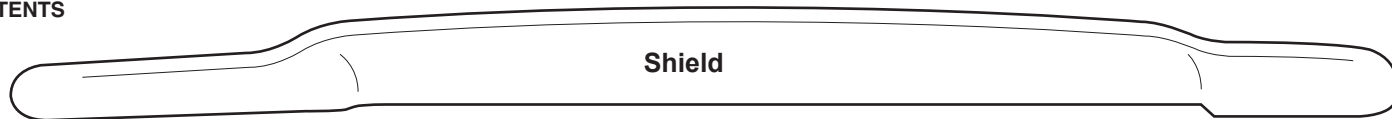


Tape Measure



Screw Driver

#### KIT CONTENTS



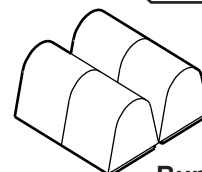
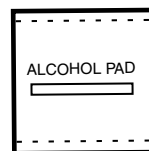
Shield

#### Rubber Grommets X2



#### 2 pc. Plastic Fastener X5

\* Alcohol pad and bumpers not part of Intercepter kits



#### Bumpers X4

## Painting Lexan and Acrylic Bug Shields

READ ALL INSTRUCTIONS CAREFULLY AND COMPLETELY BEFORE STARTING PROCEDURE. CHECK FIT BEFORE PAINTING. LUND WILL NOT WARRANT PAINTING COSTS ON MISFITTING SHIELDS.

#### Preparation

DO NOT USE SOLVENT CLEANERS OF ANY KIND TO CLEAN THE SHIELD. THIS WILL DAMAGE THE SHIELD

When preparing the shield for painting, be sure to work on a soft clean surface to ensure the shield will not be scratched.

1) The shield needs to be wiped using a mild liquid soap (without grit) and a soft cotton cloth.

2) Rinse all traces of soap off with clean water.

3) Dry with a soft clean cotton cloth.

Caution: DO NOT leave any water or soap streaks on the inside of the shield.

4) Mask off the outside face of the shield with masking tape.

5) Trim the tape flush with the outer edge of the shield.

6) Clean out the inside surface again making sure there are no streaks, fingerprints, or imperfections. Paint will not hide these imperfections.

DO NOT sand or scruff the inside of the shield before painting. The solvents in the paint will adhere to the plastic.

#### Painting the Shield

DO NOT USE ACRYLIC LACQUER. The harsh solvents will cause crazing /cracking.

Use only the following paints:

Epoxy Based Paints	Urethane Based Paints	Acrylic Enamel Based Paints
-Imron PC by Dupont	-Chromabase by Dupont	-Centari by Dupont
-Ureblo by Martin Senour	-TEC/Base by Martin Senour	-Acrylic Enamel by Martin
-Senour -Startthane by PPG	-Deltron by PPG	-Delstar by PPG
-Mirathane by R-M	-Solo by R-M	-Miracryl 11 by R-M

Note: Light coats and dry times are a must to prevent crazing.

1) Mix Paint

2) Spray 1 light dry coat and let dry 15 minutes

3) Spray 1 light dry coat and let dry 15 minutes

4) Spray 1 light coat and let dry 10 minutes

5) Spray 1 wet coat and let dry 10 minutes

6) Apply 1 final wet coat

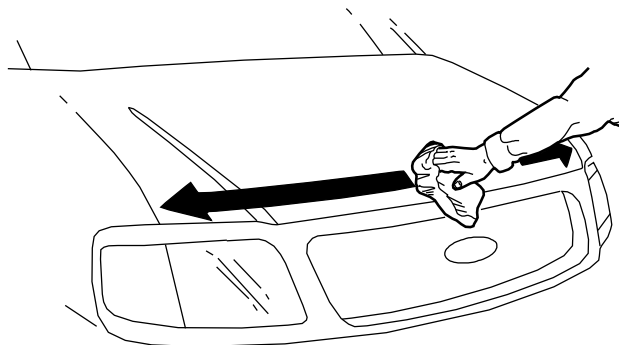
7) Apply clear coat if needed

Note: Some metallic paints will appear to be translucent. If the color is translucent you will need to apply a coat of non-metallic paint of similar color after the metallic paint, then cover the layer of non-metallic paint with a layer of the metallic paint to give it a finished look.

LUND WILL NOT COVER SUPPLIES OR TIME INCURRED WHEN MODIFYING THEIR PRODUCT.

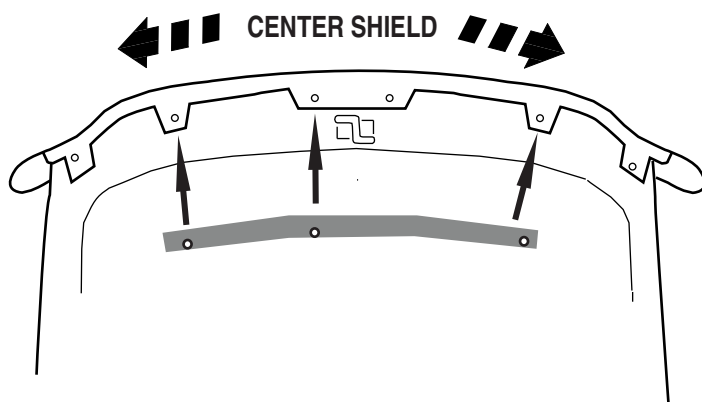


**Read all instructions completely before beginning installation.** Wash hood, including underskin, with warm, soapy water. Rinse and dry with a clean, soft cloth. Open hood.



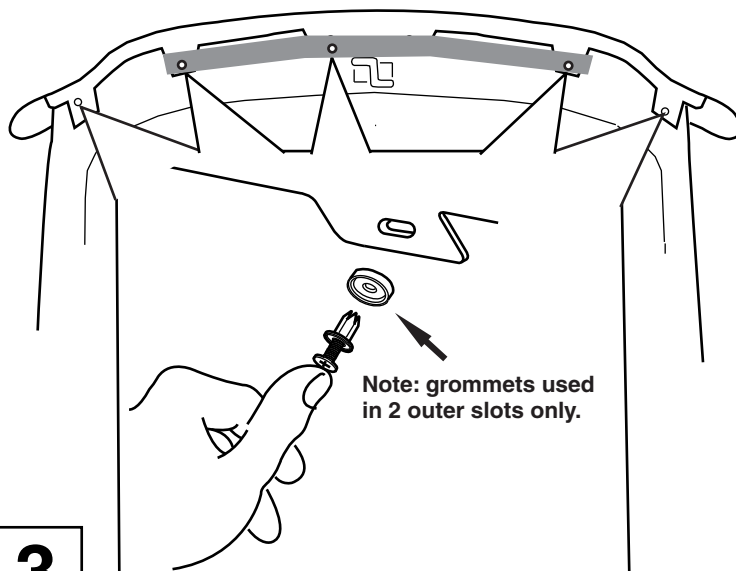
1

Remove center weatherstrip and discard fasteners. Attach shield to hood, aligning holes in hood with mounting holes in shield. Check centering with a tape measure and adjust as necessary. Reattach weatherstrip over shield.



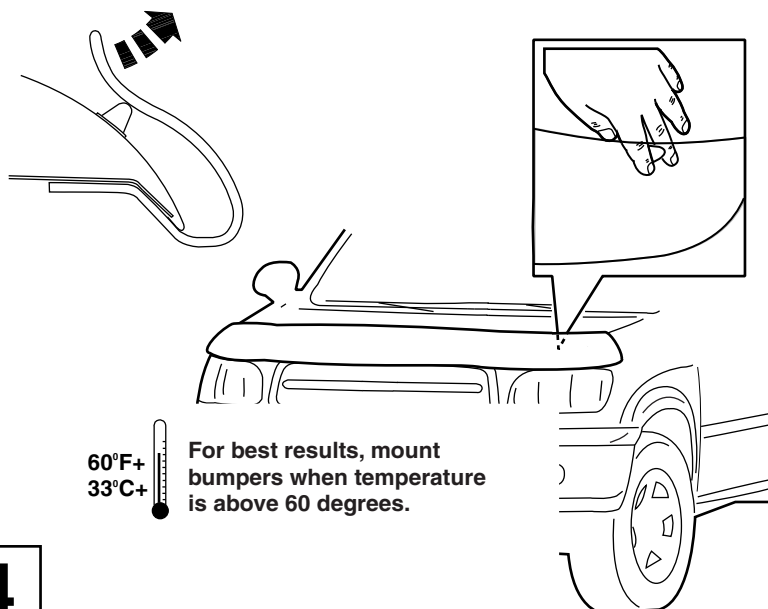
2

Attach shield with fasteners, as shown. Close hood.



3

Locate bumpers (Magnum shields) at the point where the shield is closest to the hood. Evenly distribute the bumpers across the hood, making sure to clean all mounting locations with the alcohol pad provided. Press bumpers firmly in place.



60°F+  
33°C+

For best results, mount bumpers when temperature is above 60 degrees.

4

#### CARE & CLEANING

1. AVOID THE USE OF AUTOMATIC "BRUSH-STYLE" CAR WASHES.
2. DO NOT USE CLEANING SOLVENTS OF ANY KIND.
3. WASH ONLY WITH MILD SOAP & DRY WITH A CLEAN CLOTH.
4. DO NOT PULL ON SHIELD TO CLOSE HOOD.
5. PERIODICALLY CHECK FASTENERS FOR LOOSENING.