



350 S. St. Charles St. Jasper, In. 47546
Ph. 812.482.2932 Fax 812.634.6632

www.ridetech.com

WILL NOT FIT T-TOP CAR

WILL NOT FIT T-TOP CAR

Part # 41180000
70-73 Camaro TigerCage

Base Cage

1	41170904	Main hoop assembly
1	41180901	Driver side hoop mount
1	41180900	Passenger side hoop mount
2	41170910	Main hoop reinforcement plate (inside car)
2	41170908	Main hoop reinforcement plate (under car)
1	41170903	Driver side package tray bar
1	41170902	Passenger side package tray bar
2	41170909	Package tray reinforcement plate
1	41170901	Driver side trunk bar
1	41170900	Passenger side trunk bar
2	41170911	Trunk bar reinforcement plate (under car-outer)
2	41260908	Trunk bar reinforcement plate (under car-inner)
2	49990005	Clamp tab
1	49990003	TigerClamp P (threaded)
1	49990001	TigerClamp P
1	49990004	TigerClamp D (threaded)
1	49990000	TigerClamp D
1	90002276	Tube of Anti-Seize

Hardware:

16	99371023	3/8" x 1" USS Gr. 8 SHCS	Clamps / Main hoop to mount
8	99373005	3/8" Lock washer	Main hoop to lower mount
34	99371004	3/8" x 1 1/4" USS Gr. 8 bolt	M.H. mount to reinforcement plates/ trunk bars
34	99372001	3/8" USS Gr.8 Nylok nut	Main hoop mount reinforcement plates
68	99373002	3/8" SAE flat washer	Main hoop mount / trunk bars
2	99311002	5/16" x 1 1/4" USS Gr. 8 bolt	Main hoop mount
2	99312002	5/16" USS GR.8 Nylok nut	Main hoop mount
4	99313001	5/16" SAE flat washer	Main hoop mount
2	49990008	1/2" x 1 1/2" 12 point Gr. 8 bolt	Bar to clamp tab
2	49990009	1/2" Flange nut	Bar to clamp tab



41180901



41170909



41170911



41260908



41170908



41170910



49990005

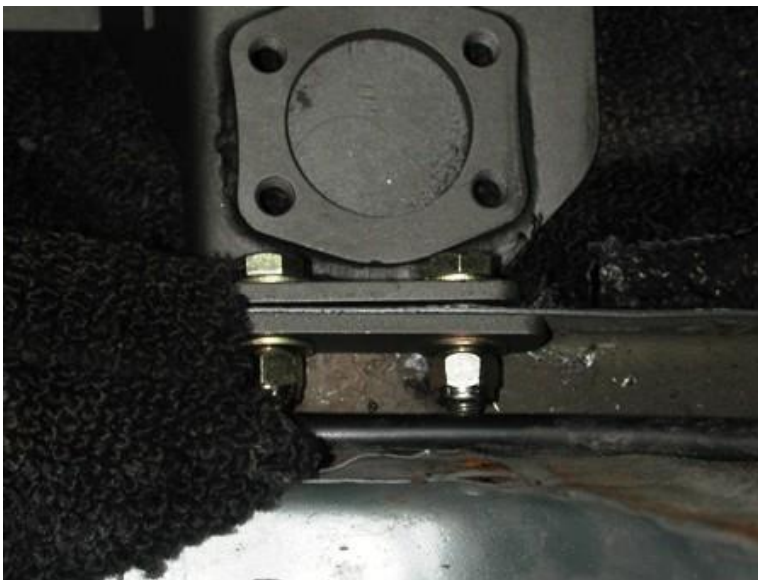
41180000 Installation Instructions

- Initial fitment of the floor mount brackets must be done under the carpet. Final installation can be done under or over the carpet.
- Use Anti-Seize on all fasteners that are threaded into stainless clamps or brackets.
- Install all bars before final tightening.
- Always tighten the tab side of the clamp first.
- Torque all 3/8" fasteners to 45 ft-lbs and all 1/2" fasteners to 75 ft-lbs.
- Make sure the clamp is exactly where you want it before tightening as the clamp may scratch the tubing.
- **Watch for fuel and brake lines when drilling holes through the floor pan.**



1. Remove the wire trough cover.
2. Place the main hoop mount on the floor pan. The hole in the lower tab should align with a 5/16 hole in the floor pan. This should place the front of the bracket approximately 38 3/4" from the front edge of the the pinch seam in the rocker.
3. Use the 5/16" x 1 1/4" bolt, Nylok nut and flat washer to secure the bracket to the floor pan.

Note: Removal of extra seam sealer will aid in bracket fitment.



4. Drill two 3/8" hole through the wire trough body seam. Using the reinforcement plate supplied, sandwich the body seam with two 3/8" x 1 1/4" bolts, flat washers and Nylok nuts.

Note: Drilling a pilot hole first will ensure that the holes are drilled in the proper location.



4. Drill the two holes through the floor pan w/ a 3/8" bit. These holes should also pass through the frame rail seam. Secure the bracket with two 3/8" x 1 1/4" bolts and Nylok nuts.

5. Bolt the main hoop to the floor mounts using four 3/8" x 1" socket head cap screws and lock washers



6. The wire trough cover will interfere with the hoop mount. 8 3/4" will need to be cut off of the end.



7. In order to keep the "T" in the casting facing up, and the bolts facing the correct direction, **there are two different direction clamps**. Be very careful as to which clamp halves you are bolting together. Refer to the image on page 6 for clamp locations.

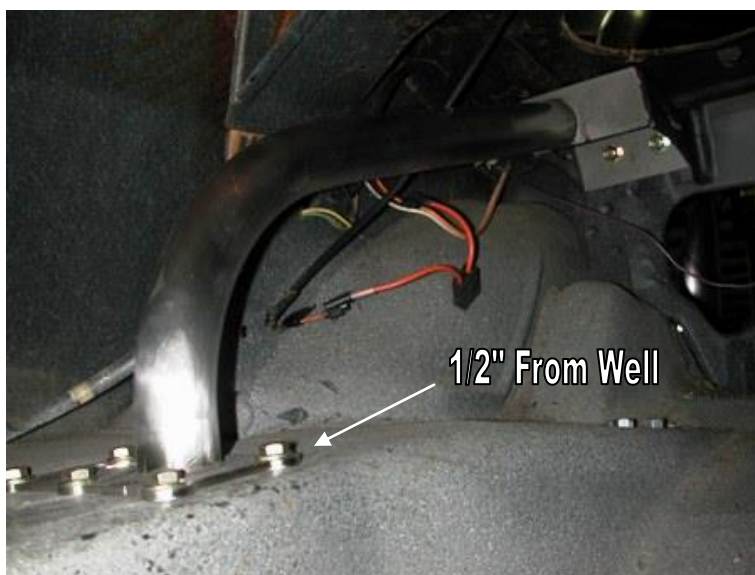
8. A correctly assembled clamp should look like the one in the picture shown to the left; **there should be a gap on one side for the tab to slide into.**



9. Using the template on page 6; drill four 3/8" holes into the top of the package tray.

10. Attach a "D" Clamp to the main hoop with the tab facing rearward with the top of the clamp approximately 35 1/4" above the floor mount. Use 3/8" x 1" socket head cap screws on the clamp.

11. Place the driver side package tray bar on the package tray and secure it to the clamp with a 1/2" x 1 1/2" 12 point bolt and flange nut.



12. Drop four 3/8" x 1 1/4" bolts with flat washers down through the bar mount and the holes in the package tray.

13. Fasten the trunk bar to the package tray bar with four 3/8" Nylok nuts and flat washers.

14. Using the trunk bar as a template drill two 3/8" holes through the vertical surface of the package tray.

15. Place the reinforcement plate on the inside of the package tray and secure with assembly with two 3/8" x 1 1/4" bolts, flat washers and Nylok nuts. Nuts should face trunk.

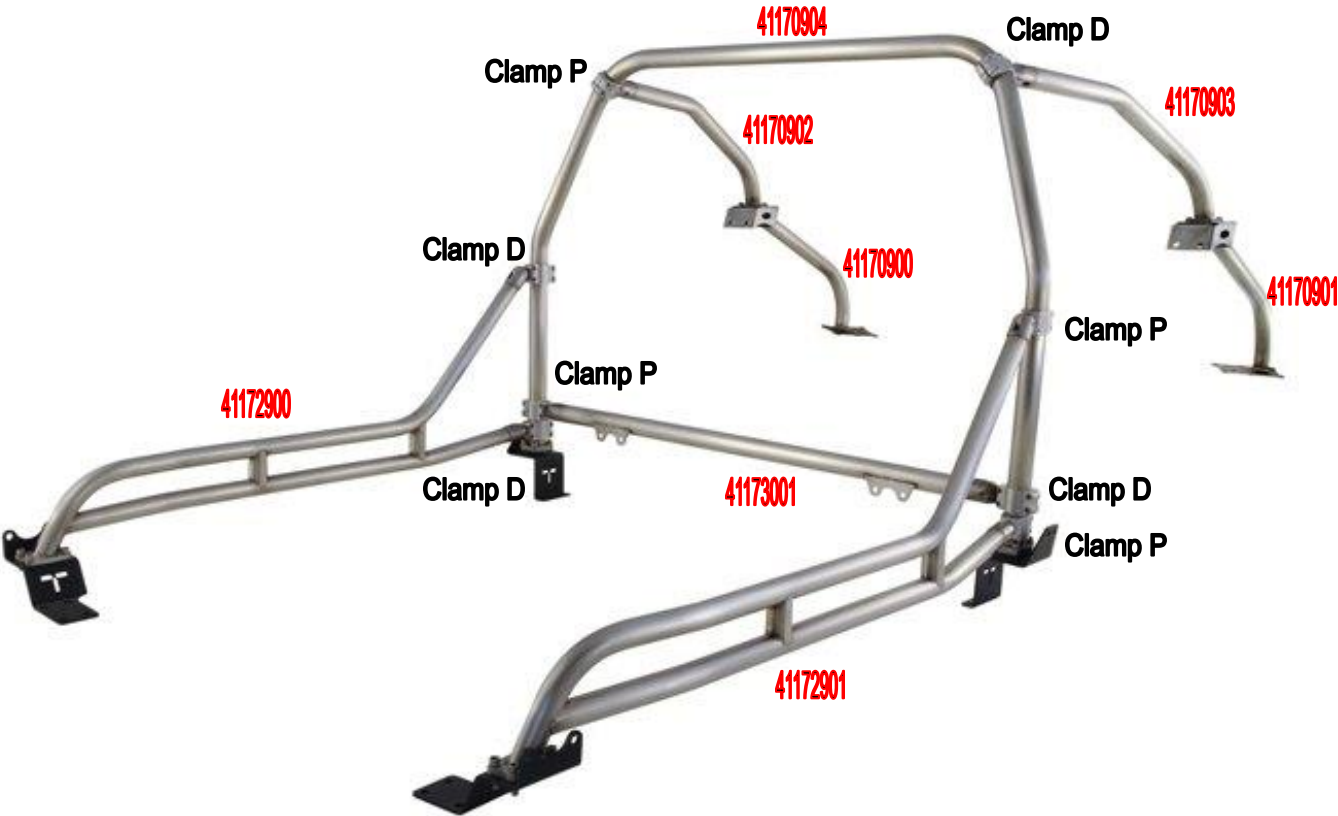


16. Using the trunk bar as a template drill six 3/8" holes through the trunk pan. Four of the holes should straddle the frame rail. The inside edge of the plate should be 1/2" from the trunk well.

17. Install the reinforcement plates against the bottom of the trunk pan and secure the assembly with 3/8" x 1 1/4" bolts, flat washers and Nylok nuts.

18. Tighten all bolts.

TigerClamp Location Chart



Package Tray Bar Template

