



350 S. St. Charles St. Jasper, In. 47546
Ph. 812.482.2932 Fax 812.634.6632
www.ridetech.com

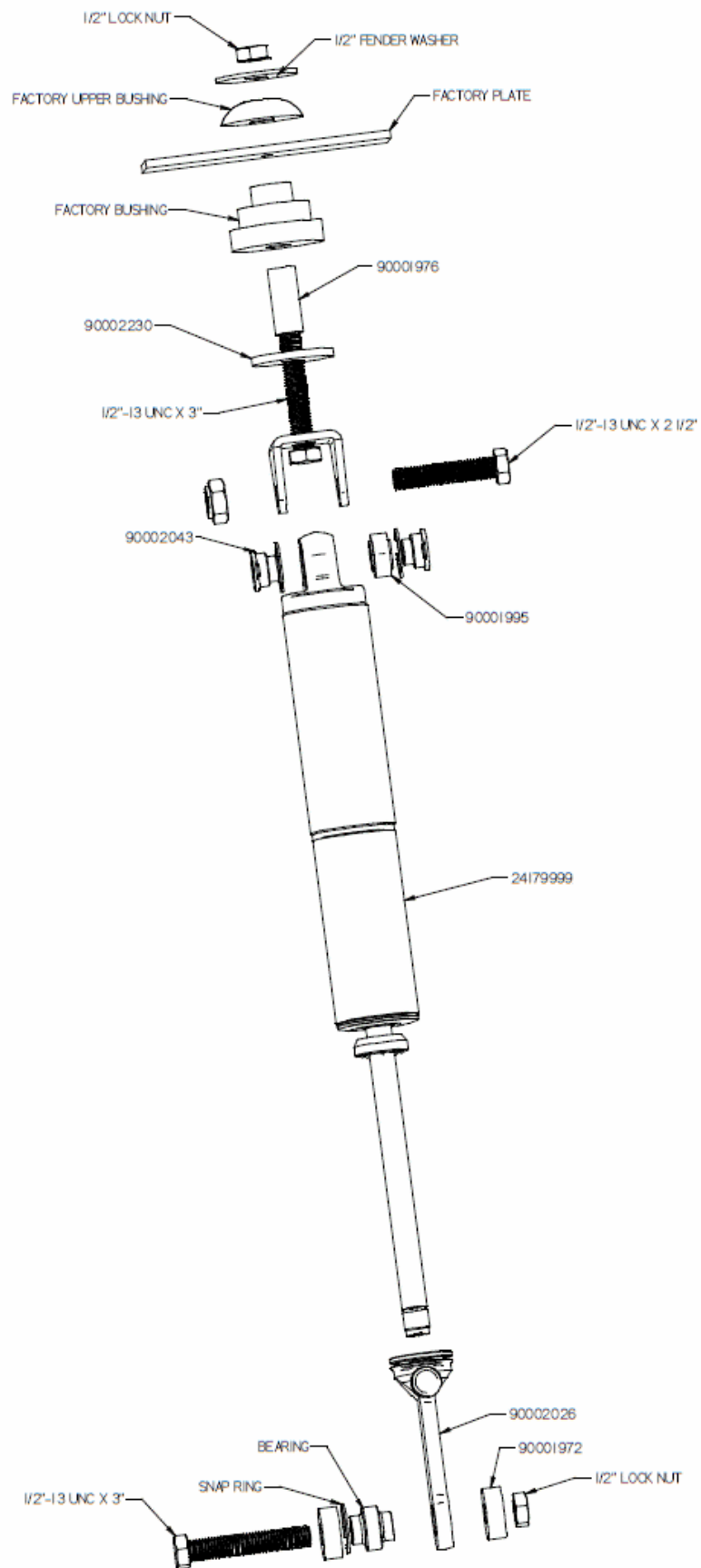
Part # 13040701
Mopar LX Rear Master Series SA Shock Kit

Components:

4	90001972	Aluminum spacers for lower bearing (.4375" thick)
4	90002043	Aluminum T-bushing for upper bearing
2	90001621	Upper shock bracket
2	90002230	Upper shock bracket washer
2	90001976	Bushing sleeve (Pressed into factory bushing)
2	Master Series single adjustable shocks (<i>includes the following</i>)	
2	24179999	7" stroke Master Series single adjustable shock
2	90002026	4" Master Series eyelet (w/ knob)
2	90001628	.5" I.D. bearing (installed into eyelet)
2	90001994	.625" I.D. bearing (installed into shock body)
4	90001995	Bearing snap ring

Hardware:

2	99501003	1/2" x 2 1/2" USS bolt	Shock to upper bracket
2	99502001	1/2" USS Nylok nut	Shock to upper bracket
4	99501004	1/2" x 3" USS bolt	Shock mounts
4	99502001	1/2" USS Nylok nut	Shock mounts
2	99503004	1/2" Fender washer	Shock bracket to factory mount



Installation Instructions

1. Raise the vehicle to a safe and comfortable working height with the suspension hanging freely.
2. Remove the factory shock absorbers and coil spring. Refer to a factory service manual for proper disassembly procedures.



3. Press the 1.6" bushing sleeve into the oem rubber shock mount.

4. Bolt the upper shock mount to rubber oem mount using the 1/2" x 3" bolt, Nylok nut and fender washer. The 2" plate must be installed between the bracket and the rubber bushing.

5. Using a 1/2" x 2 1/2" bolt and Nylok nut, fasten the top of the shock to the upper mount. **The shock body should be mounted on top.** One aluminum T-bushing must be installed on each side of the bearing.



6. Bolt the eyelet to the lower control arm using the 1/2" x 3" bolt and Nylok nut. An aluminum .4375" thick spacer must be installed on each side of the bearing.