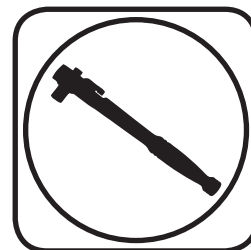
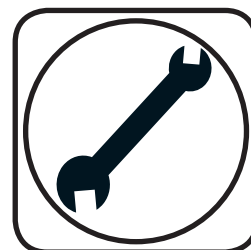




**Part # 11365399 - 1973-1987 GM C10 Delrin Leaf Spring Bushings**



Recommended Tools



## 1973-1987 GM C10 Delrin Leaf Spring Bushings Installation Instructions

### Table of contents

Page 2..... Included Components and Bushing Installation

Page 3..... Bump Stop Installation

Page 4..... Bump Stop & Rear Hanger Installation

Page 5..... Rear Hanger & Shackle Installation

THESE DELRIN LEAF SPRING BUSHINGS WILL ONLY FIT RIDETECH COMPOSITE LEAF SPRINGS (11364799). THE RIDETECH HQ SERIES SHOCK KIT (11369510) IS RECOMMENDED TO ACHIEVE MAXIMUM PERFORMANCE.





### Major Components .....In the box

Part #	Description	QTY
70012652	Delrin Front Leaf Spring Bushing	4
70012653	Delrin Rear Leaf Spring Bushing	4
70012461	Delrin Rear Shackle Bushing	4
90002672	Inner Bushing Sleeve	6
90002640	Bump Stop	1
90002668	Leaf Spring Shackle Assembly	2
90002669	Leaf Spring Hanger Assembly - Driver	1
90002670	Leaf Spring Hanger Assembly - Passenger	1

#### HARDWARE

Part #	Description	Usage	QTY
99431002	7/16" -14 x 1 1/4" Hex Bolt	Hanger to Frame	8
99433002	7/16" Flat Washer	Hanger to Frame	16
99432001	7/16" -14 Nylok Nut	Hanger to Frame	8
99561011	9/16" -12 x 4 1/2" Hex Bolt	Leaf Spring Bushings	6
99562006	9/16" -12 Nylok Nut	Leaf Spring Bushings	6
99563003	9/16" Flat Washer	Leaf Spring Bushings	12
99373003	3/8" Flat Washer	Bump Stop	2

## Bushing Installation

**WHEN INSTALLING COMPOSITE LEAF SPRINGS, THEY NEED TO BE INSTALLED IN CONJUNCTION WITH THE LEAF SPRING BUSHINGS.**

**1.** Jack the vehicle up and support it by the frame rails. You will need to raise and lower the rear differential with a jack. With the vehicle supported by the frame, put the jack underneath the rear end housing and raise the jack up just enough to support the differential. Disconnect the bottom of the shock and remove the rear leaf springs retaining the OEM leaf spring mount hardware.

**2.** If you purchased the Composite Leaf Springs and Delrin Bushings together, the bushings will be preinstalled in the leaf springs and shackles.

**Note:** This kit requires the removing of the OEM bump stop bracket and also the rear leaf spring hanger. A new hanger is supplied in the kit.

This Kit includes Delrin Bushings for the front and rear of the Leaf Spring and the Shackle. All 3 are different sizes. The largest diameter bushings fit the front of the leaf springs, the medium diameter bushings fit the rear of the leaf springs, the smallest diameter bushings fit the shackles. All 3 uses the same size inner sleeve. Press the Bushings in using either an Arbor Press or Bench Vise.



### Bump Stop Installation



3. The OEM bump stop and brackets need to be removed from the frame. Do this by cutting the rivet heads off and driving them out or drilling the rivets out. Remove the driver and passenger brackets.



4. Diagram "7" shows the frame with the bump stop bracket removed. A new hole needs to be drilled for the bump stop, this will be done later.



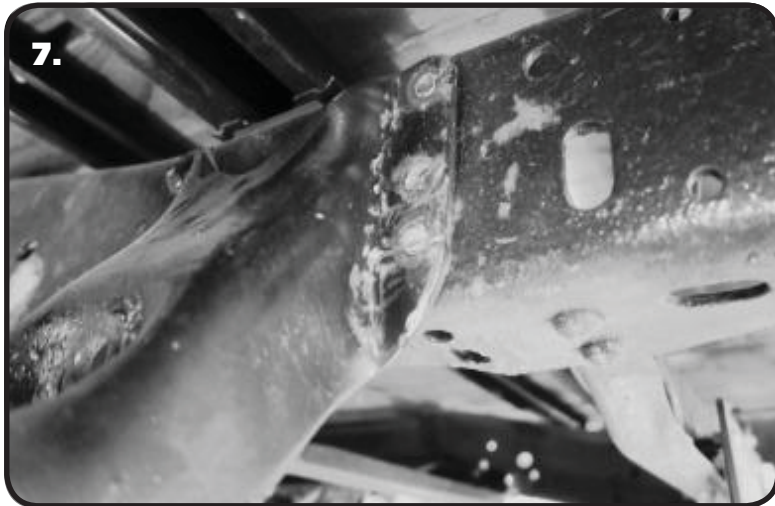
5. Once the bump stop mount is removed, a new hole will need to be drilled for the included Bump Stop. Mark the hole 2" from the REAR OUTER rivet hole and 1 3/4" from the INNER Edge of the frame. Mark this location and drill with a 3/8" drill bit.



### Bump Stop & Rear Hanger Installation



6. Install the Bump Stop using a 3/8" Flat Washer & 3/8"-16 Nylok Nut. Hold the Bump Stop with your hand while tightening the nut.

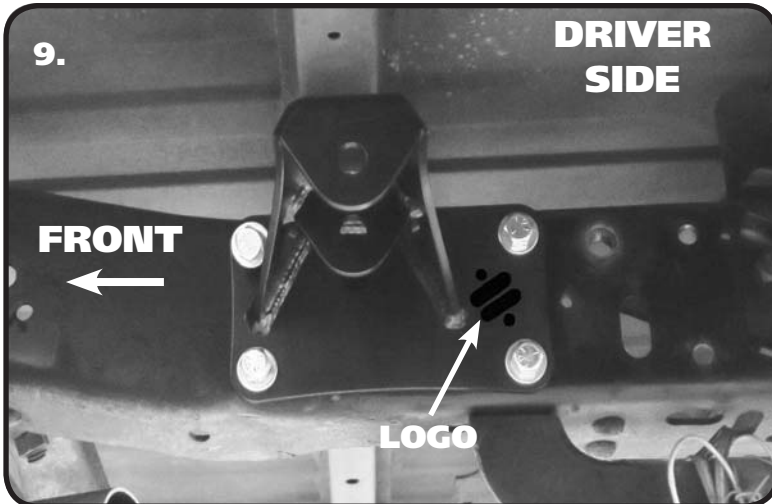


7. The rear leaf spring hanger will need to be removed from the frame and replaced with the one included in the StreetGrip Kit. This can be done by cutting a "+" in the head of the rivet and chiseling it off. With the head removed, you can drive the rivet out. The rivets can also be drilled out.

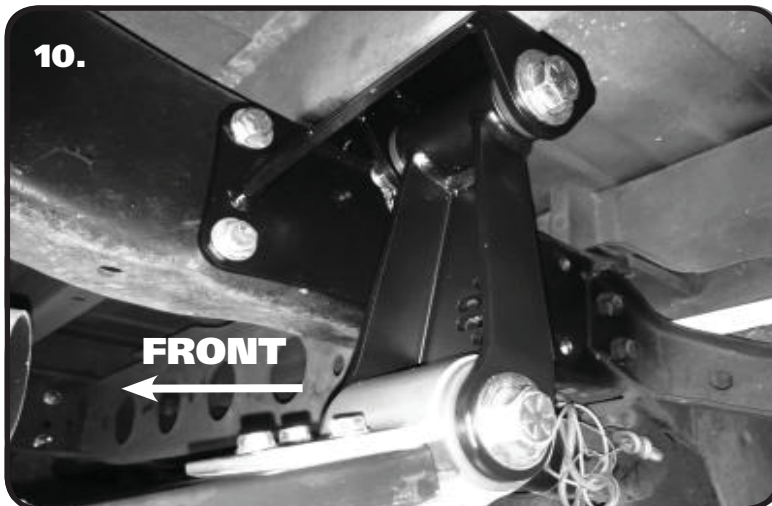


8. The rear of the frame has 2 sets of Hanger Mounting Holes, this Kit uses the FRONT set. The Driver side is shown in **Image 8**. Drill the (4) front Hanger mounting holes to 7/16".





**9.** The Kit includes new Rear Leaf Spring Hangers. There is a Driver and Passenger Rear Hanger. The Hangers get mounted with the Logo to the rear and the Tabs pointing down. Install a 7/16" Flat Washer on (4) 7/16"-14 x 1 1/4" Hex Bolts. Hold the correct Hanger Bracket on the side of the frame aligning the (4) holes with the (4) FORWARD hanger mounting holes. The 2 Ears on the Hanger need to be pointing down with the Logo to the rear as seen in **Image 9**. Insert the Bolt/Washer assembly through each of the holes. Install a 7/16" Flat Washer & 7/16"-14 Nylok Nut on the Bolt Threads sticking through the frame. Tighten the Hardware to 50 ftlbs. Repeat steps 7-9 on the opposite side.



**10.** Install the Shackle, with the OPEN side to the FRONT, by sliding it up into the tabs lining up the inside of the sleeve with the holes in the tabs. Install a 9/16" Flat Washer on a 9/16"-12 x 4 1/2" Bolt supplied in this kit. Insert the Bolt/Washer through the Hanger & Shackle. Install a 2nd 9/16" Flat Washer & 9/16"-12 Nylok Nut on the Threads sticking through. DO NOT tighten the 9/16" Hardware until the Leaf Springs are installed. Refer to the Leaf Spring instructions for installation.