



350 S. St. Charles St. Jasper, In. 47546

Ph. 812.482.2932 Fax 812.634.6632

www.ridetech.com

Part # 11282899

65-70 Impala Front Lower StrongArms

For use w/ Shockwaves or CoilOvers

Components:

1	90000093	Driver side lower arm
1	90000094	Passenger side lower arm
2	90002586	Ball joint (includes boot, grease fitting, castle nut & cotter pin)
2	90000928	Rubber bushing – pressed into arm
2	90001045	Control arm pivot bearing
2	90000734	Bearing housing
2	90000735	Bearing retaining plate
2	90000733	Aluminum bearing spacer
2	90000732	Bearing stud (Set to 3 1/16")
4	90002062	Aluminum spacer – Shock to lower arm

Hardware:

2	99752001	3/4"-16 Lock nut Gr.8	Pivot bearing
2	99752004	3/4"-16 Jam nut	Pivot bearing
2	99753001	3/4" Flat washer	Pivot bearing
6	99371018	3/8" x 1 1/4" SHCS	Pivot bearing
6	99373005	3/8" Lock washer	Pivot bearing
2	99501024	1/2"-13 x 3 1/4" Gr. 5 bolt	Shockwave to lower arm
2	99502001	1/2"-13 Nylok nut	Shockwave to lower arm
2	99371004	3/8" x 1 1/4" USS bolt	Steering stop
2	99372004	3/8" USS regular nut	Steering stop



Installation Instructions

1. Raise and support vehicle at a safe, comfortable working height. Let the front suspension hang freely.
2. Remove the coil spring, shock absorber, upper and lower control arms, sway bar and the strut rods. **There is a washer on each side of the lower control arm frame bushing, these will be reused. The factory lower control arm bolt will be reused as well.**

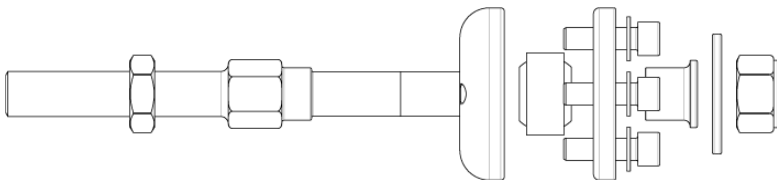
Note: This kit is designed for use with our MuscleBar sway bar. It is easier to install it **before** the lower arms. The factory sway bar will not fit.



3. Bolt the lower StrongArm to the frame using the factory bolt. **Be sure to reinstall the T washers that came off the factory arm bushing.**

4. The front leg of the lower arm will attach to the frame in place of the strut rod. Refer to the diagram on the next page for assembly order.

Note: The hole in the frame may need to be buffed to allow bearing assembly to slide in.



5. Using the bearing retainer as a template; drill three 3/8" holes in the frame to secure the assembly. Use three 3/8" x 1 1/4" SHCS and lock washers to secure the assembly.



6. Attach the Shockwave to the lower control arm using a $\frac{1}{2}$ " x 3" bolt and Nylok jam nut. An aluminum spacer must be installed on each side of the bearing.

7. Two $\frac{3}{8}$ " x $1\frac{1}{4}$ " bolts and nuts are supplied for the steering stop. They will bolt to the rear side of the ball joint plate. This can be adjusted to limit steering radius.



8. The Caster setting on this system has a lot of adjustment. We recommend setting it at 3-3.5 degrees.

9. Driving height pressure should be around 100psi. 6-8 clicks in the shocks will be a good starting point. This will vary to vehicle weight and driver preference.

