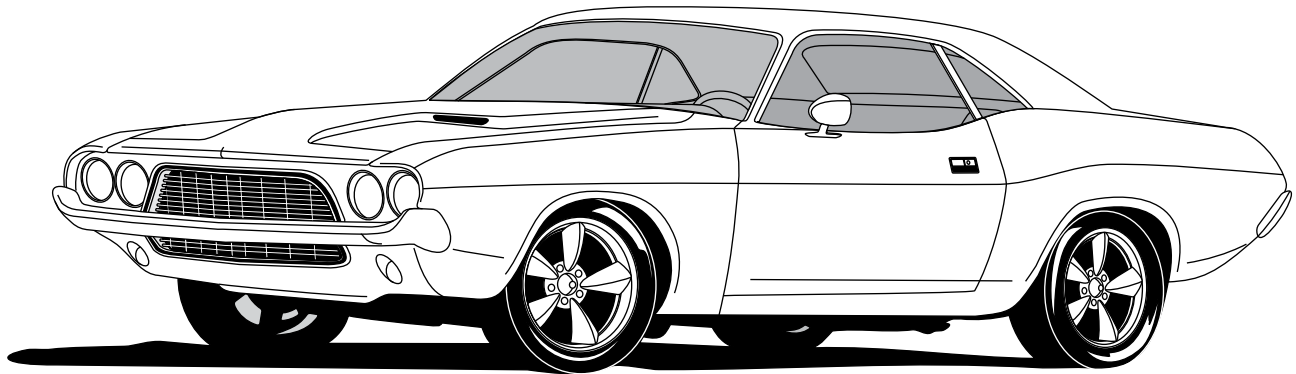




an ISO 9001:2008 Registered Company

1970-74 Challenger/Cuda

with A/C
Condenser with Drier
051073-EDA



18865 Goll St. San Antonio, TX 78266 ph: 210-654-7171 fax: 210-654-3113



Table Of Contents

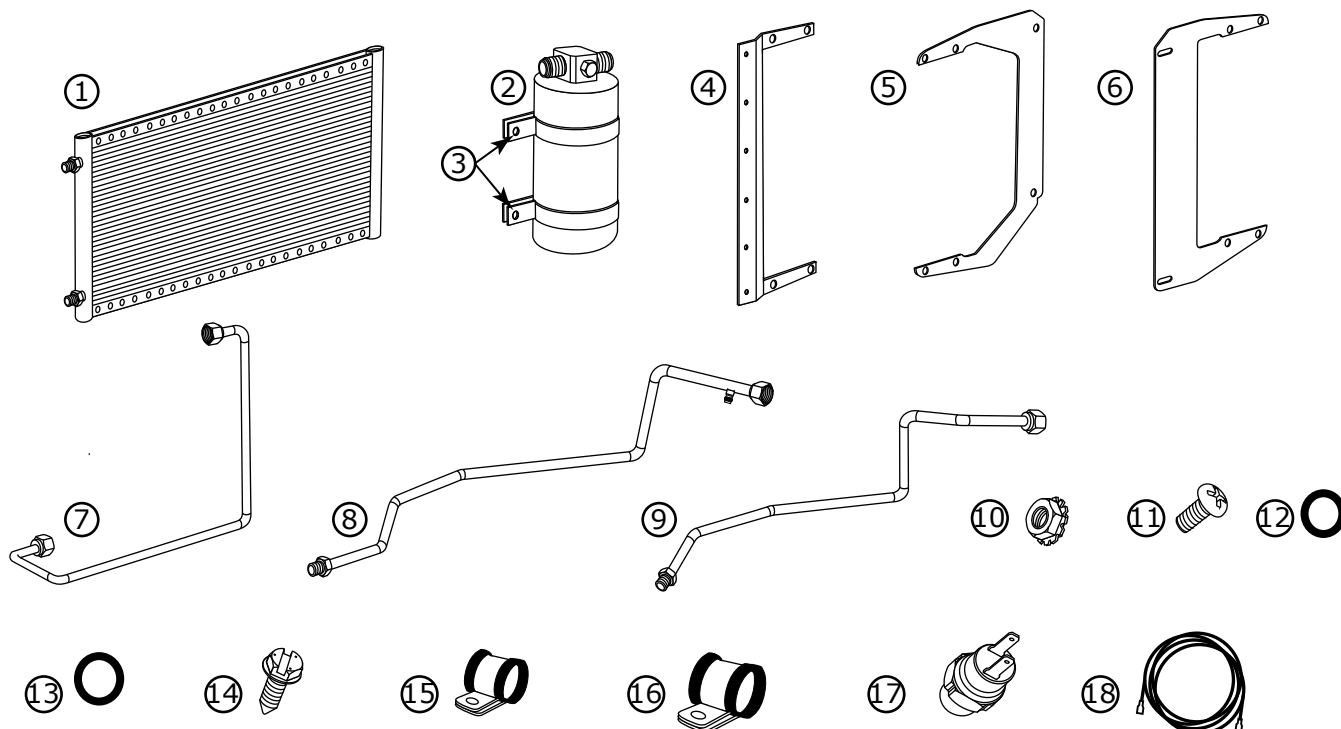
- 1. Cover**
- 2. Table of Contents**
- 3. Packing List/Parts Disclaimer**
- 4. Information Page**
- 5. Condenser Bracket Installation**
- 6. Drier & Mounting Bracket Installation**
Figures 1 & 2
- 7. Drier Installation**
Figures 3, 3a & 4
- 8. Hood Latch Removal & Condenser Assembly Installation**
Figures 5 & 6
- 9. Condenser Assembly Installation (Cont.)**
Figures 7 & 8
- 10. Hardline & Binary Switch Installation**
Figure 9
- 11. Condenser Kit Packing List**



Packing List Condenser Kit (051073-EDA)

No.	Qty.	Part No.	Description
1.	1	03766-VUC	Super Flow Condenser 14 x 22
2.	1	07321-VUC	Drier
3.	2	07113-VUB	Drier Clamp
4.	1	65998-VUB	Drier Bracket
5.	1	646000-PDB	70-74 Challenger/Cuda with A/C Driver Side Cond. Bracket
6.	1	646001-PDB	70-74 Challenger/Cuda with A/C Passenger Side Cond. Bracket
7.	1	35368-VCG	#6 Condenser/Drier Hardline
8.	1	101006-ECL	70-74 Challenger/Cuda with A/C #6 Drier/Core Hardline
9.	1	101008-ECD	70-74 Challenger/Cuda with A/C #8 Condenser Hardline
10.	12	18260-VUB	10/24 Nut w/ Star Washer
11.	12	18249-VUB	10-24 x 3/8 PH Pan Head Screw
12.	3	33857-VUF	#6 O-ring
13.	1	33858-VUF	#8 O-ring
14.	4	18247-VUB	#10 x 1/2 Sheet Metal Screw
15.	2	31600-VUD	#2 Adel Clamp
16.	2	31603-VUD	#4 Adel Clamp
17.	1	11078-VUS	Switch Female Binary
18.	1	23135-VUW	Compressor Lead

**** Before beginning installation, open all packages and check contents of shipment. Please report any shortages directly to Vintage Air within 15 days. After 15 days, Vintage Air will not be responsible for missing or damaged items.**

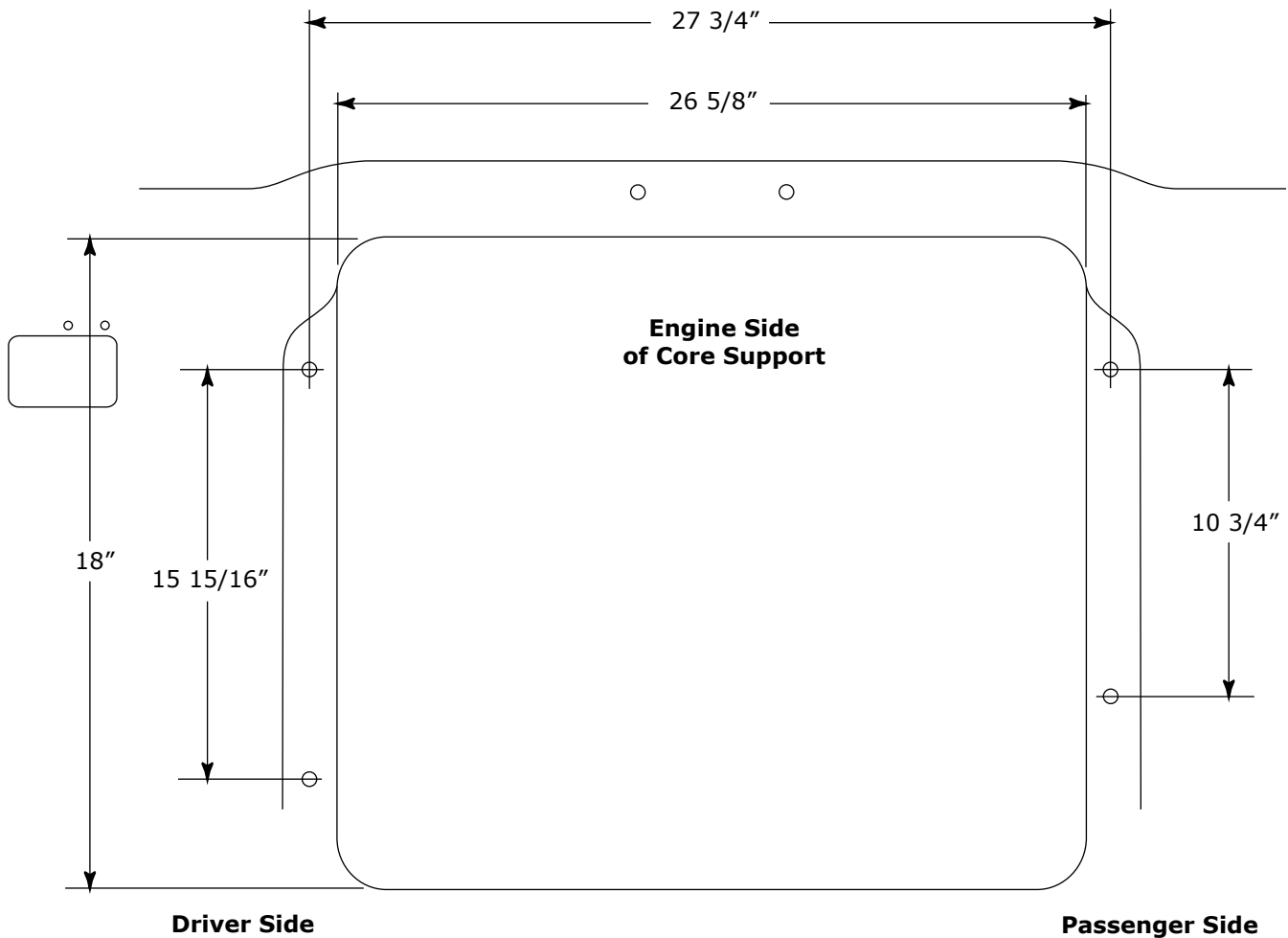


NOTE: Image may not depict actual parts and quantities. Refer to packing list for actual parts and quantities.



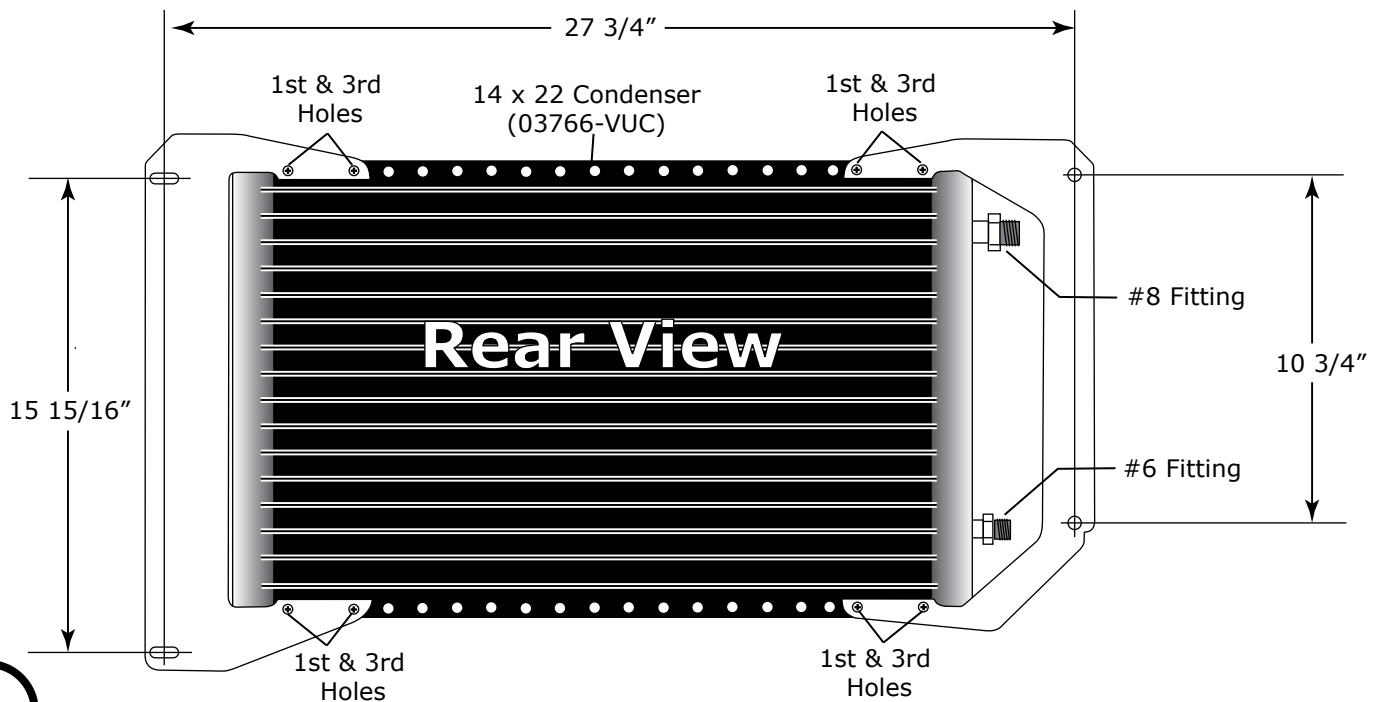
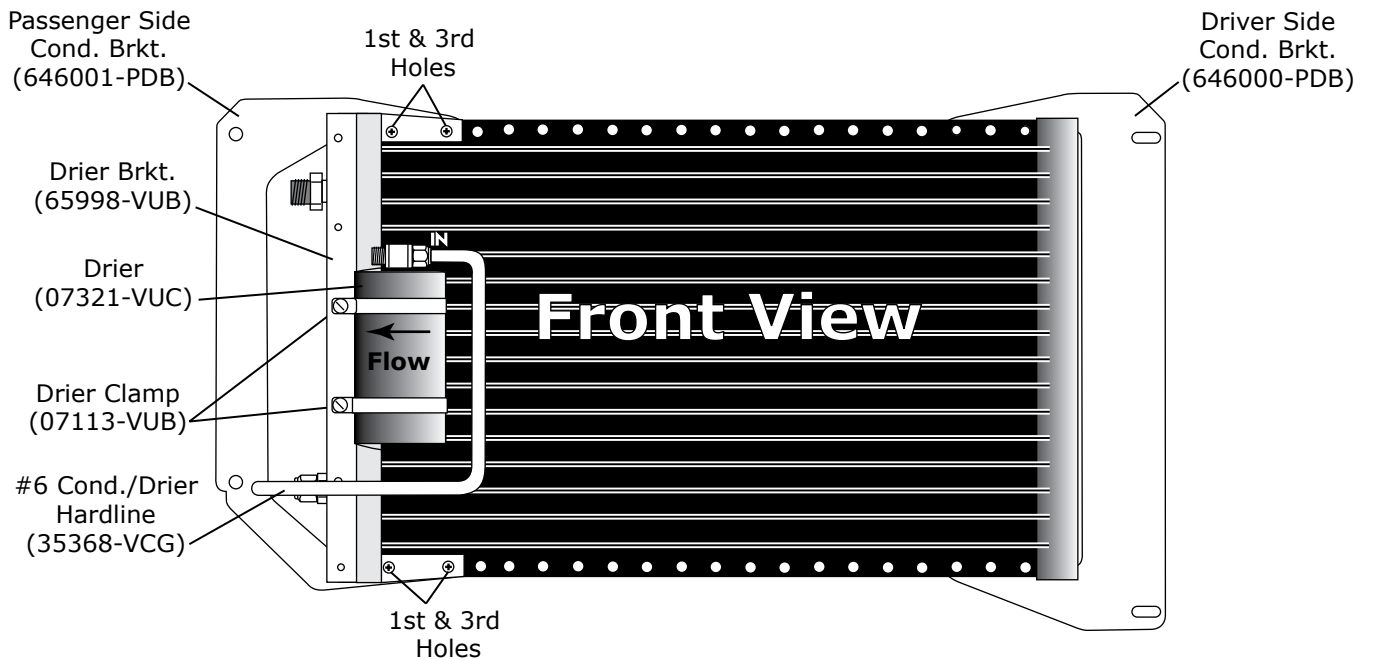
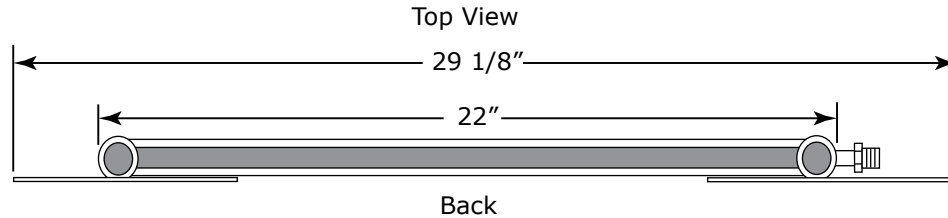
IMPORTANT WIRING NOTICE-PLEASE READ

This kit was developed based on the measurements below, which were taken from a 1973 Challenger with factory air core support.





Condenser Bracket Installation

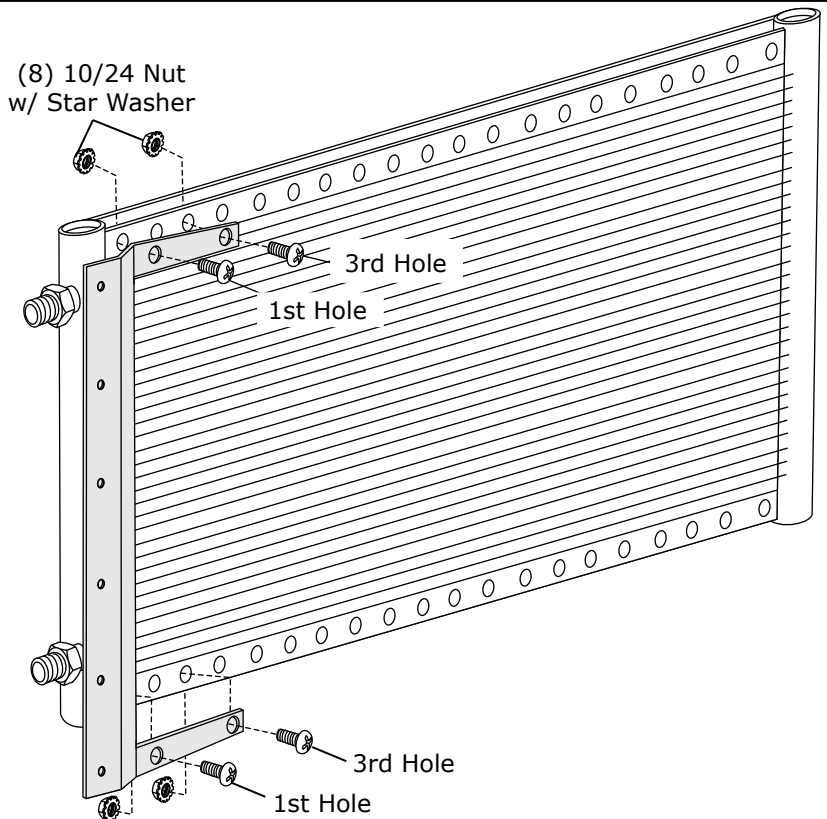




Drier Bracket Installation

1. Install drier mounting bracket on condenser using (4) 10/24 x 3/8" pan head screws and (4) 10/24 nuts with star washers (See Figure 1, below). **NOTE: Brackets mount through the first and third holes in the condenser.**

Figure 1



Mounting Bracket Installation

1. Install condenser mounting bracket on condenser using (8) 10/24 x 3/8" pan head screws and (8) 10/24 nuts with star washers (See Figure 2, below). **NOTE: Brackets mount through the first and third hole in the condenser.**

Driver Side
Cond. Brkt.
(646000-PDB)

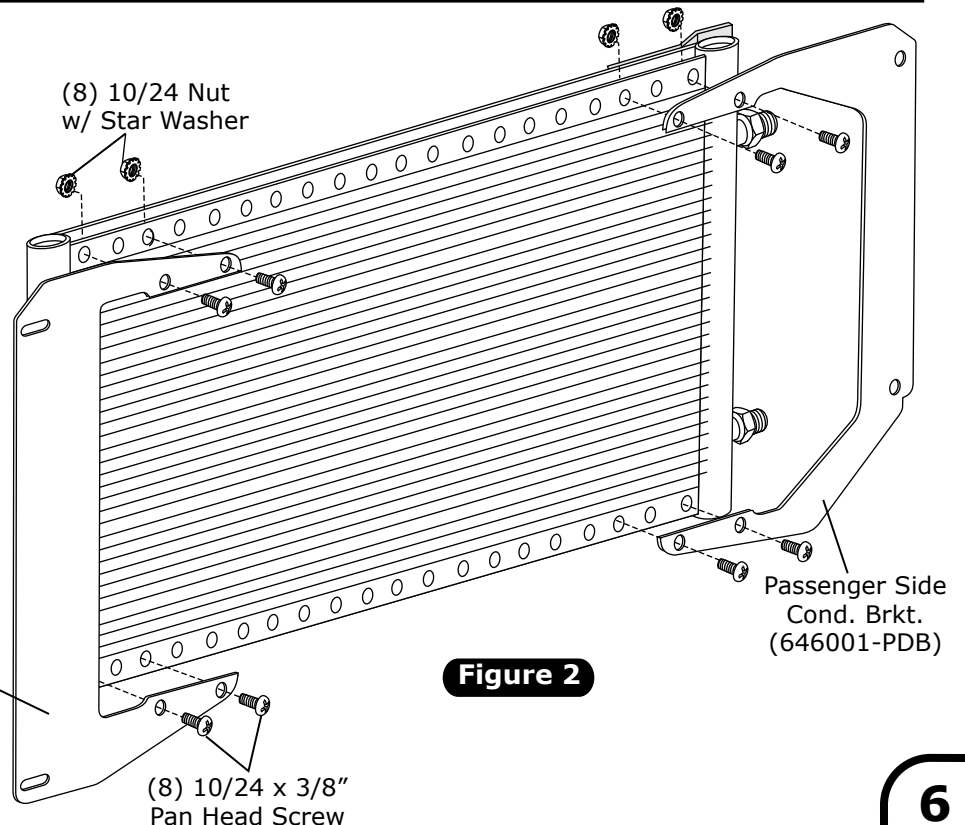


Figure 2

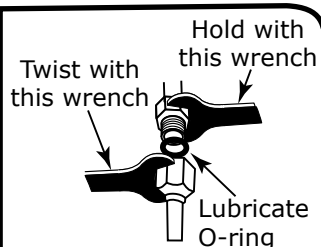


Drier Installation

1. Place drier clamps around drier as shown in Figure 3, below, and secure drier to drier bracket using (2) #10 x 1/2" sheet metal screws.

NOTE: Refrigerant flow through drier is IN from condenser, OUT to evaporator.

2. Lubricate (2) #6 O-rings as shown in Figure 3a, and install the #6 Cond./Drier hardline as shown in Figure 4, below. Tighten fitting connections as shown in Figure 3a, below.



NOTE: For a proper seal of fittings, install supplied O-rings as shown and lubricate with supplied oil.

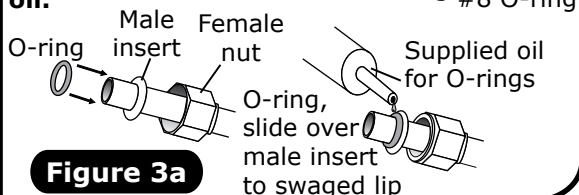


Figure 3a

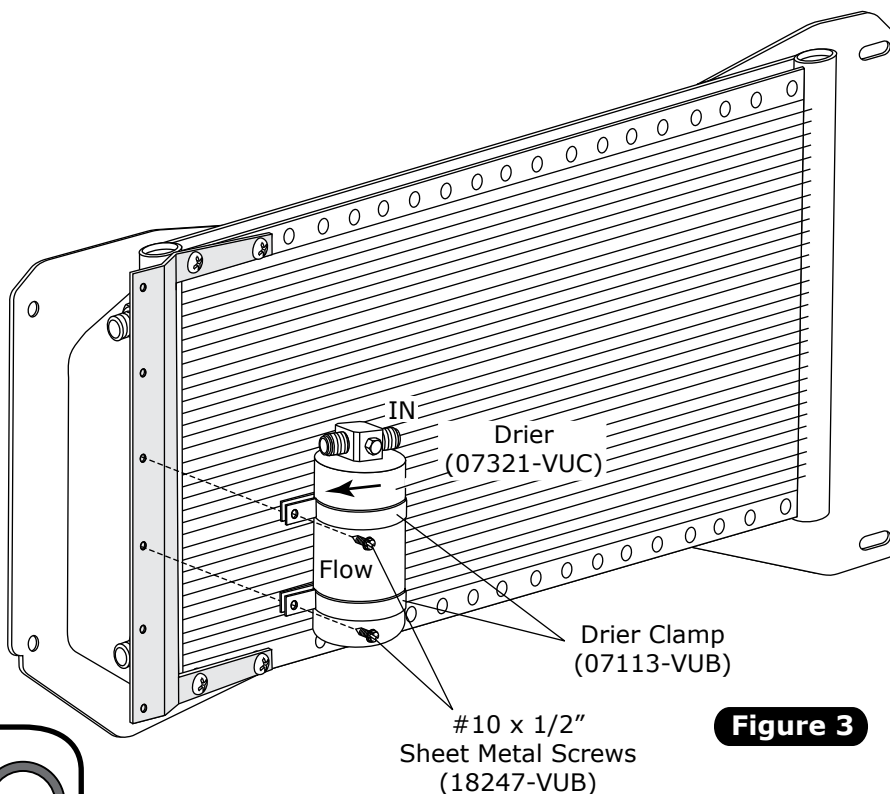


Figure 3

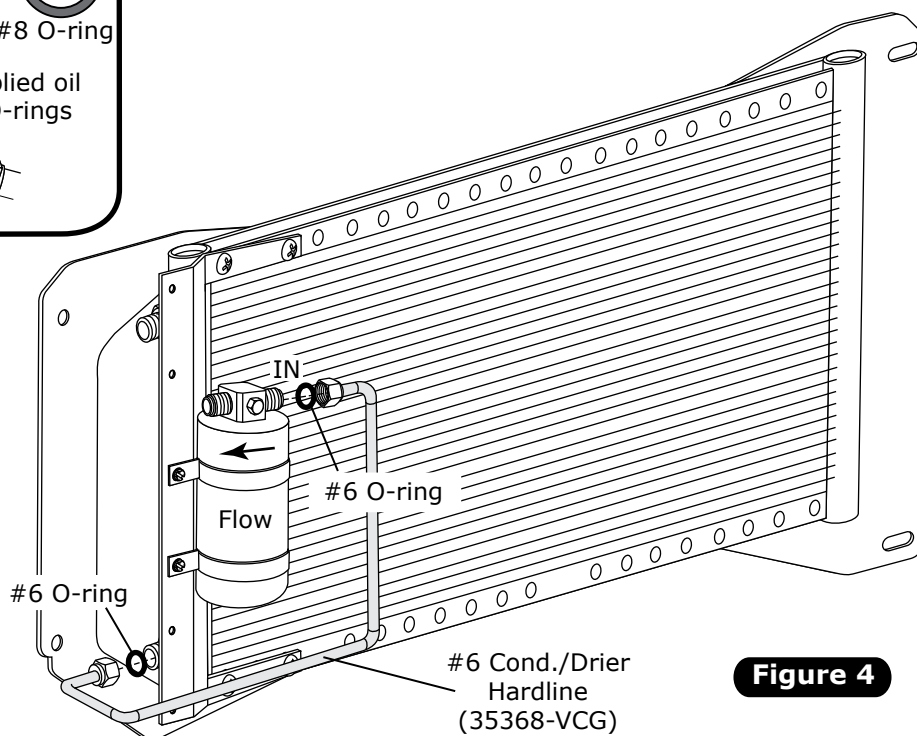


Figure 4



Hood Latch Assembly Removal

1. Remove OEM hood latch assembly and hardware as shown in Figure 5, below (retain).

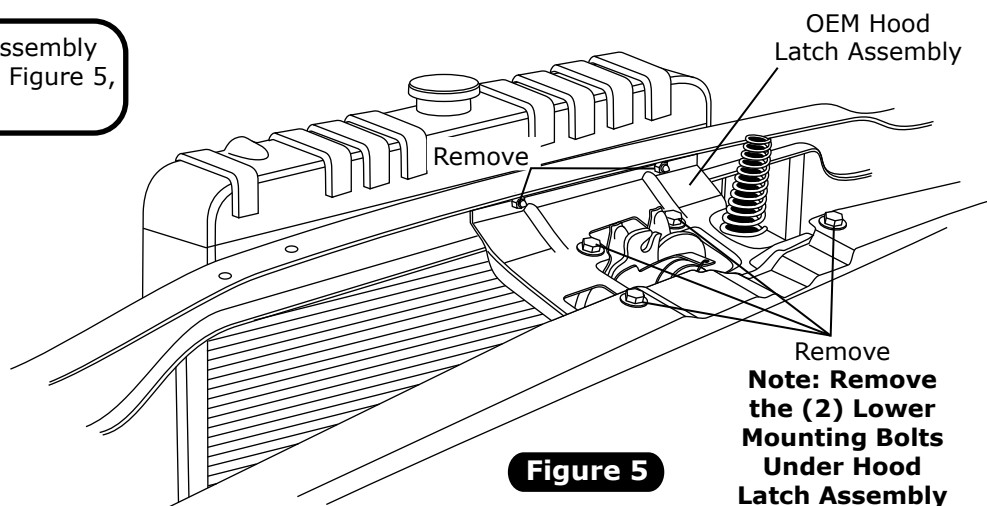


Figure 5

Condenser Assembly Installation

1. Remove the (4) radiator mounting bolts (retain).
2. Lean the radiator toward the engine.
3. Install the condenser assembly between the grille and core support as shown in Figure 6, below.
4. With the condenser assembly between the grille and the core support, slide the condenser assembly to the right and pass the condenser assembly through the opening in the core support between the radiator and the core support.
5. With the left side of the condenser assembly between the radiator and the core support, slide the condenser assembly to the left and place the right side of the condenser assembly through the opening in the core support between the radiator and the core support.

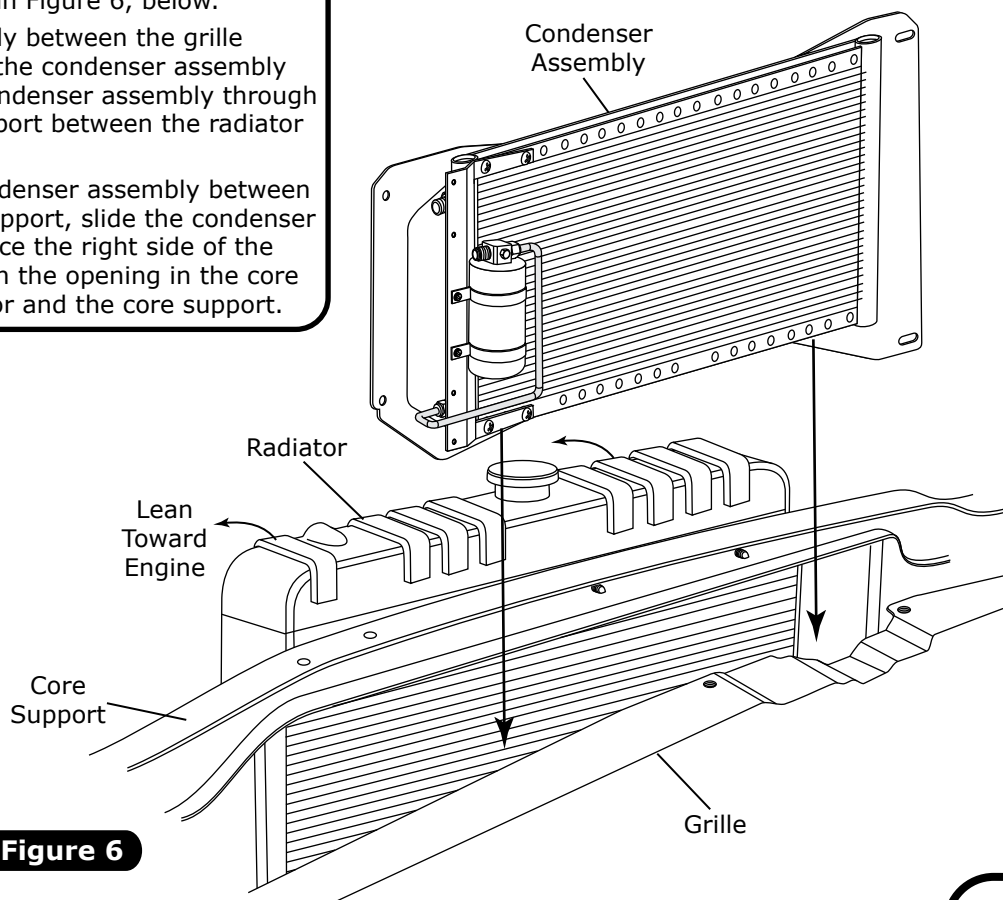


Figure 6



Condenser Assembly Installation (Cont.)

1. Using the OEM hardware secure the condenser assembly between the radiator and the core support see Figure 7, below.
2. Using the OEM hardware reinstall the hood latch assembly as shown in Figure 8, below.

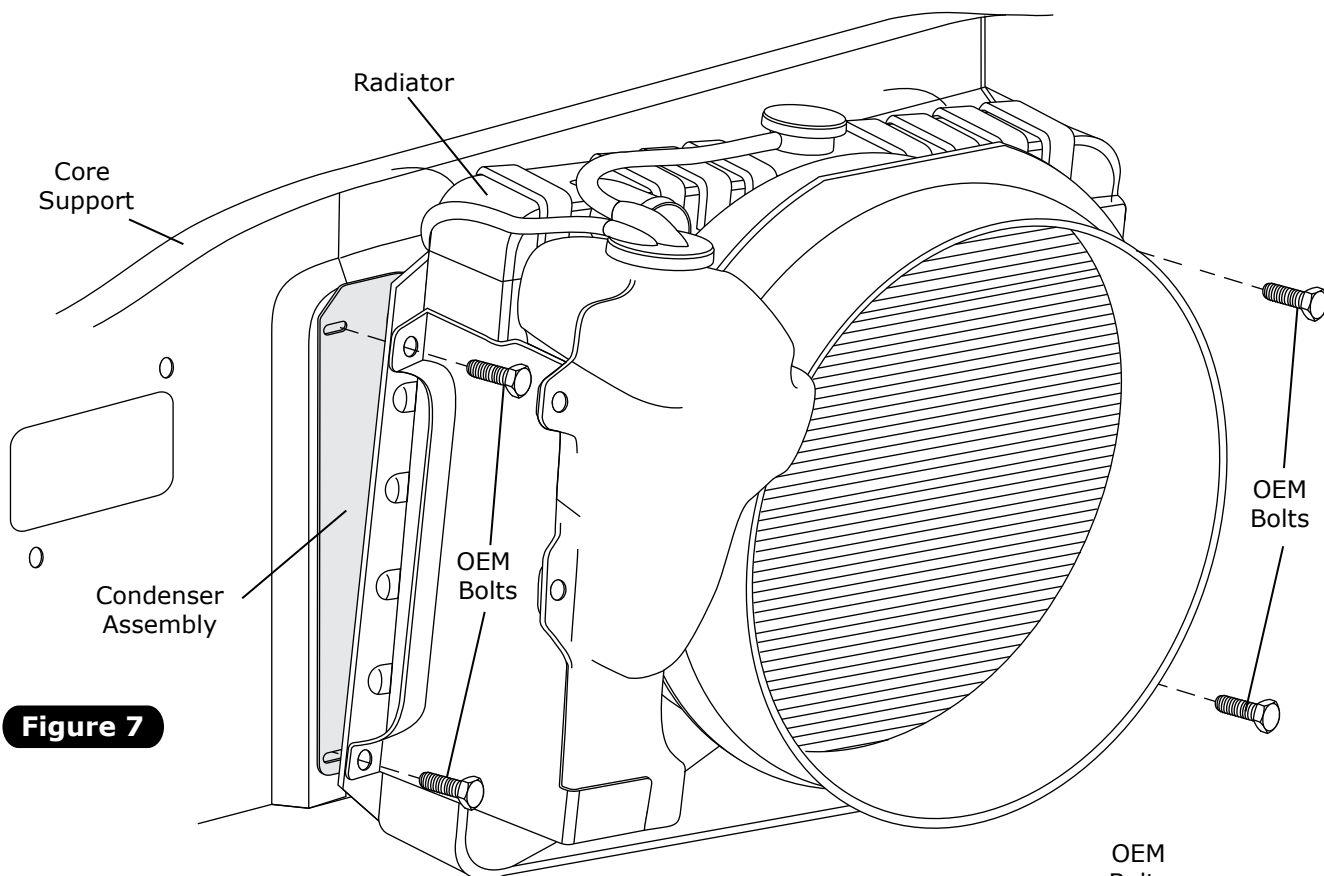


Figure 7

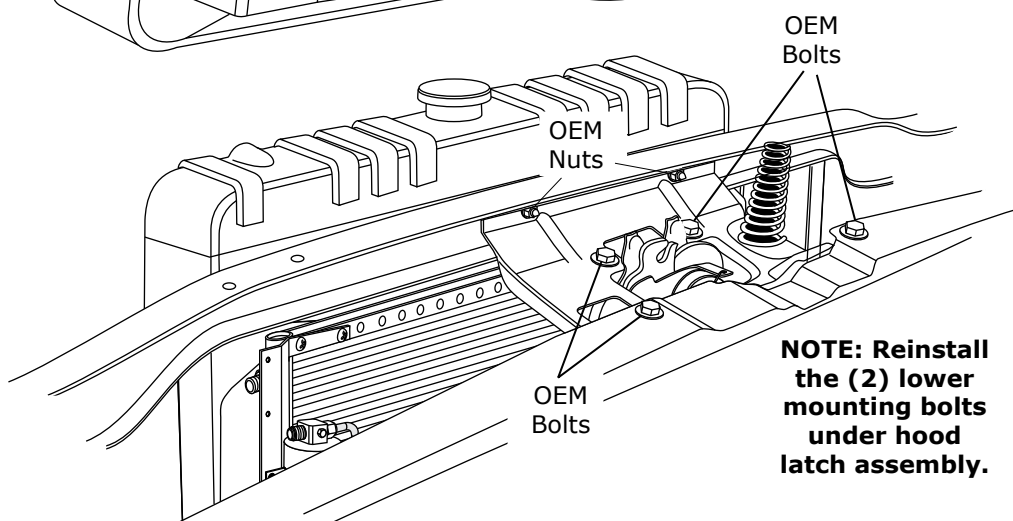


Figure 8

NOTE: Reinstall the (2) lower mounting bolts under hood latch assembly.



Hardline & Binary Switch Installation

1. Place (2) adel clamps around the #6 drier hardline and the #8 condenser hardline as shown in Figure 9, below.
2. Lubricate a #6 O-ring and #8 O-ring as shown in Figure 3a on Page 7. Install the #6 drier hardline and the #8 condenser hardline as shown in Figure 9, below. Tighten fitting connections as shown in Figure 3a on Page 7.
3. Install female binary switch onto service port located on the #6 drier/core hardline as shown in Figure 9, below.

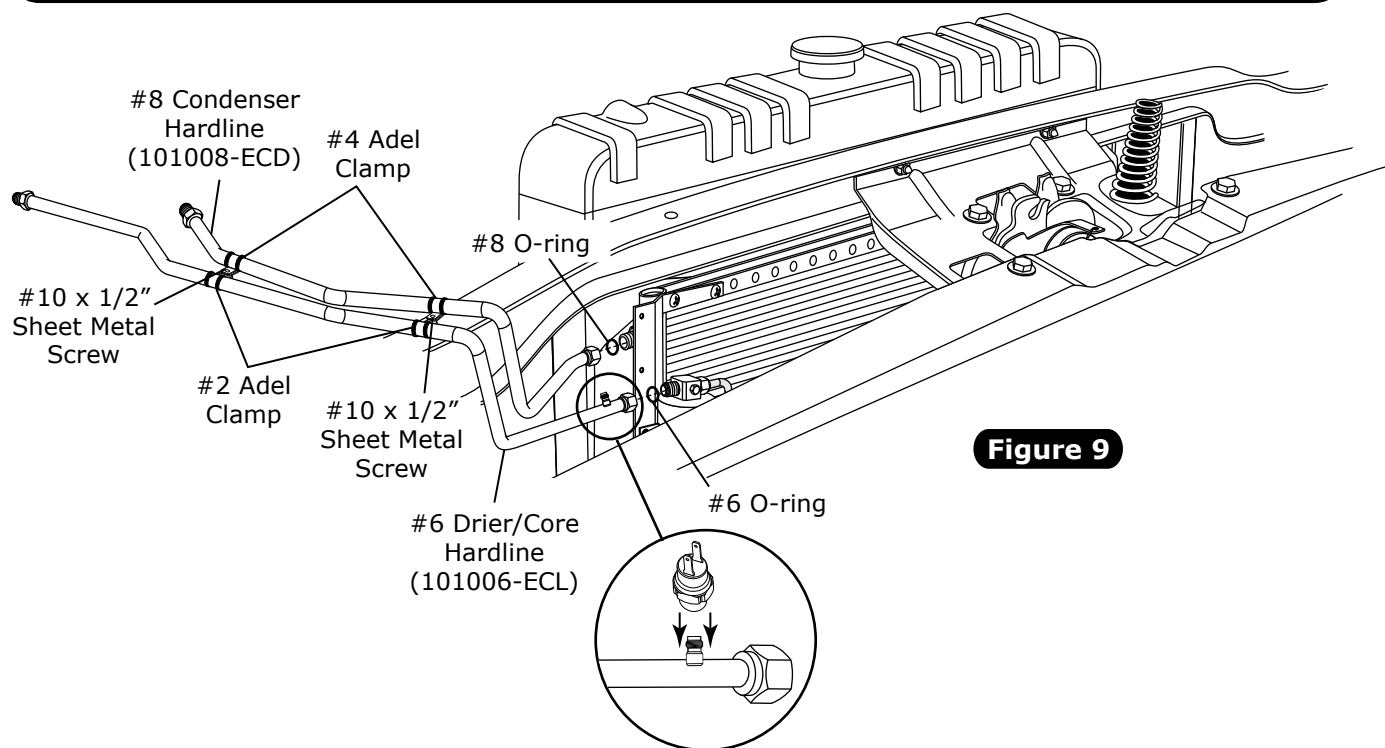


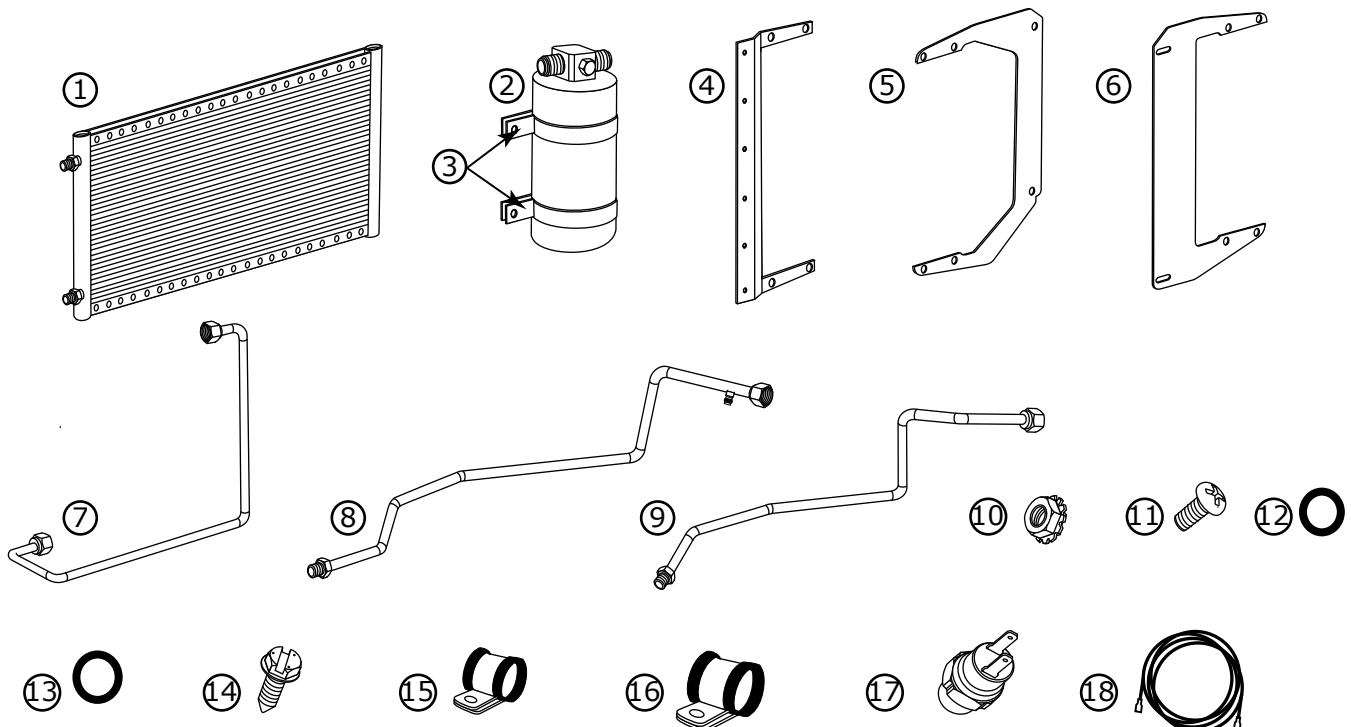
Figure 9



Packing List Condenser Kit (051073-EDA)

No.	Qty.	Part No.	Description
1.	1	03766-VUC	Super Flow Condenser 14 x 22
2.	1	07321-VUC	Drier
3.	2	07113-VUB	Drier Clamp
4.	1	65998-VUB	Drier Bracket
5.	1	646000-PDB	70-74 Challenger/Cuda with A/C Driver Side Cond. Bracket
6.	1	646001-PDB	70-74 Challenger/Cuda with A/C Passenger Side Cond. Bracket
7.	1	35368-VCG	#6 Condenser/Drier Hardline
8.	1	101006-ECL	70-74 Challenger/Cuda with A/C #6 Drier/Core Hardline
9.	1	101008-ECD	70-74 Challenger/Cuda with A/C #8 Condenser Hardline
10.	12	18260-VUB	10/24 Nut w/ Star Washer
11.	12	18249-VUB	10-24 x 3/8 PH Pan Head Screw
12.	3	33857-VUF	#6 O-ring
13.	1	33858-VUF	#8 O-ring
14.	4	18247-VUB	#10 x 1/2" Sheet Metal Screw
15.	2	31600-VUD	#2 Adel Clamp
16.	2	31603-VUD	#4 Adel Clamp
17.	1	11078-VUS	Switch Female Binary
18.	1	23135-VUW	Compressor Lead

Checked By: _____
Packed By: _____
Date: _____



**NOTE: Image may not depict actual parts and quantities.
Refer to packing list for actual parts and quantities.**