



an ISO 9001:2000 Registered Company

1964 $\frac{1}{2}$ -66 MUSTANG

CONDENSER WITH DRIER

011065

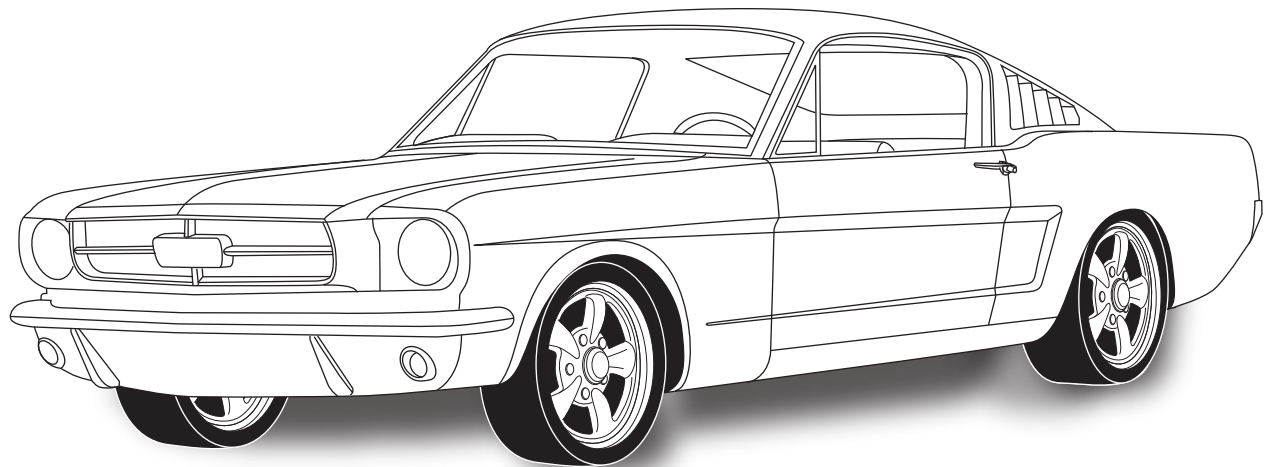




TABLE OF CONTENTS

PAGES

1. COVER
2. TABLE OF CONTENTS
3. PACKING LIST/PARTS DISCLAIMER
4. INFORMATION PAGE
5. DRIER AND MOUNTING BRACKETS INSTALLATIONS
FIGURES 1 & 2
6. DRIER INSTALLATION & HARDLINE INSTALLATION
FIGURES 3 & 4
7. HOOD LATCH ASSEMBLY AND CORE SUPPORT MODIFICATION
FIGURES 5 & 6
8. CONDENSER INSTALLATION
FIGURES 7 & 8
9. HARDLINE AND BINARY SWITCH INSTALLATIO
FIGURES 9 & 9a
10. CORE SUPPORT MODIFICATION TEMPLATE
11. PACKING LIST

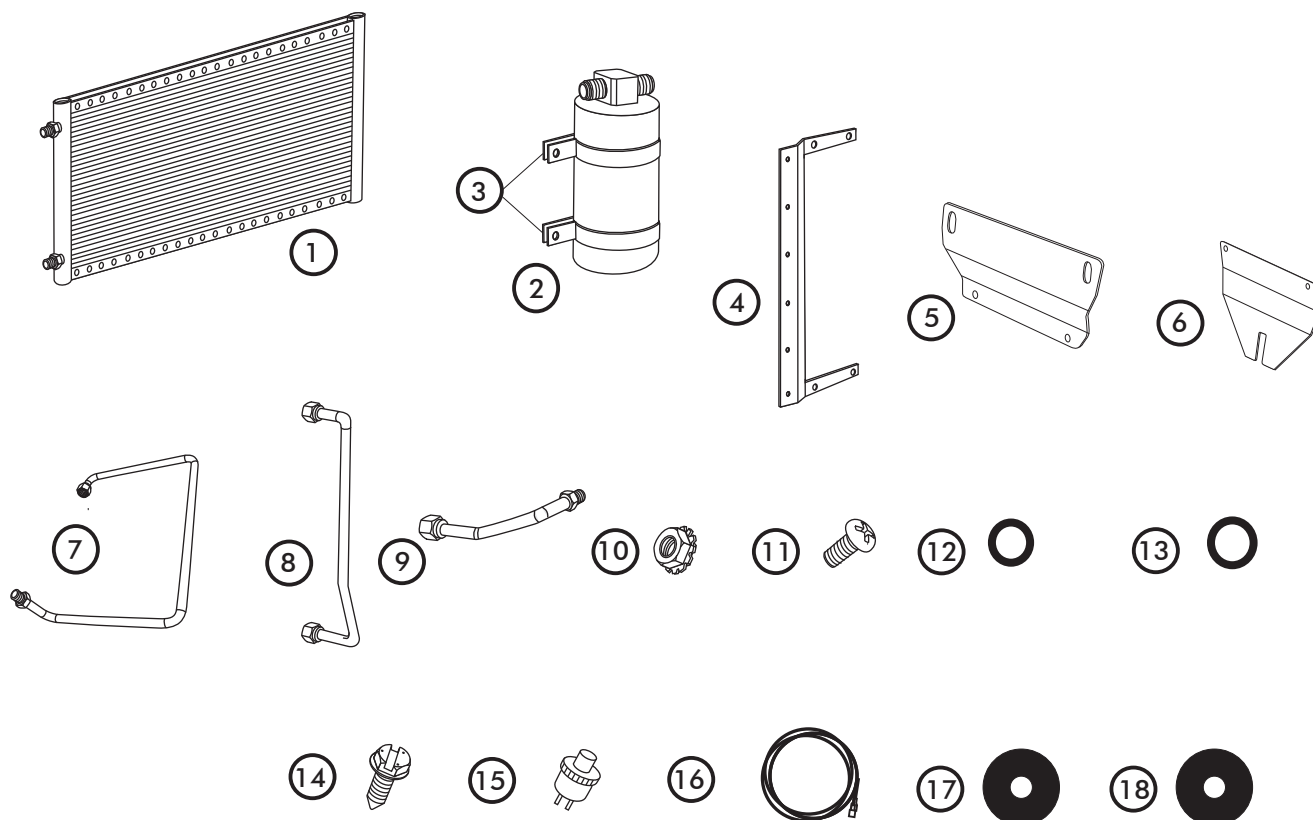


1964½-66 MUSTANG CONDENSER w/DRIER PACKING LIST

CONDENSER KIT
011065

NO.	QTY.	PART NO.	DESCRIPTION
1.	1	03765-VUC	SUPER FLOW CONDENSER 14 X 20
2.	1	07321-VUC	DRIER
3.	2	07113-VUB	DRIER CLAMP
4.	1	65998-VUB	UNIVERSAL DRIER BRKT 14 3/4
5.	1	64265-PFB	64½-66 MUSTANG UPPER COND BRKT
6.	1	64264-PFB	64½-66 MUSTANG LOWER COND BRKT
7.	1	081095	#6 DR/CORE HARDLINE
8.	1	08164-PFL	#6 DRIER/COND HARDLINE
9.	1	081063	#8 COND HARDLINE
10.	8	18260-VUB	10-24 NUT W/STAR WASHER
11.	8	18249-VUB	10-24 X 3/8 PAN HEAD SCREW
12.	3	33857-VUF	#6 O-RING
13.	1	33858-VUF	#8 O-RING
14.	2	18247-VUB	#10 X 1/2 SHEETMETAL SCREW
15.	1	11079-VUS	MALE BINARY SWITCH
16.	1	23135-VUW	COMPRESSOR LEAD
17.	1	33135-VUI	GROMMET 1-1/4 X 1 W 3/8 HOLE
18.	1	33133-VUI	GROMMET 1-1/4 X 1 W 1/2 HOLE

**** BEFORE BEGINNING INSTALLATION OPEN ALL PACKAGES AND CHECK CONTENTS OF SHIPMENT. PLEASE REPORT ANY SHORTAGES DIRECTLY TO VINTAGE AIR WITHIN 15 DAYS. AFTER 15 DAYS, VINTAGE AIR WILL NOT BE RESPONSIBLE FOR MISSING OR DAMAGED ITEMS.**

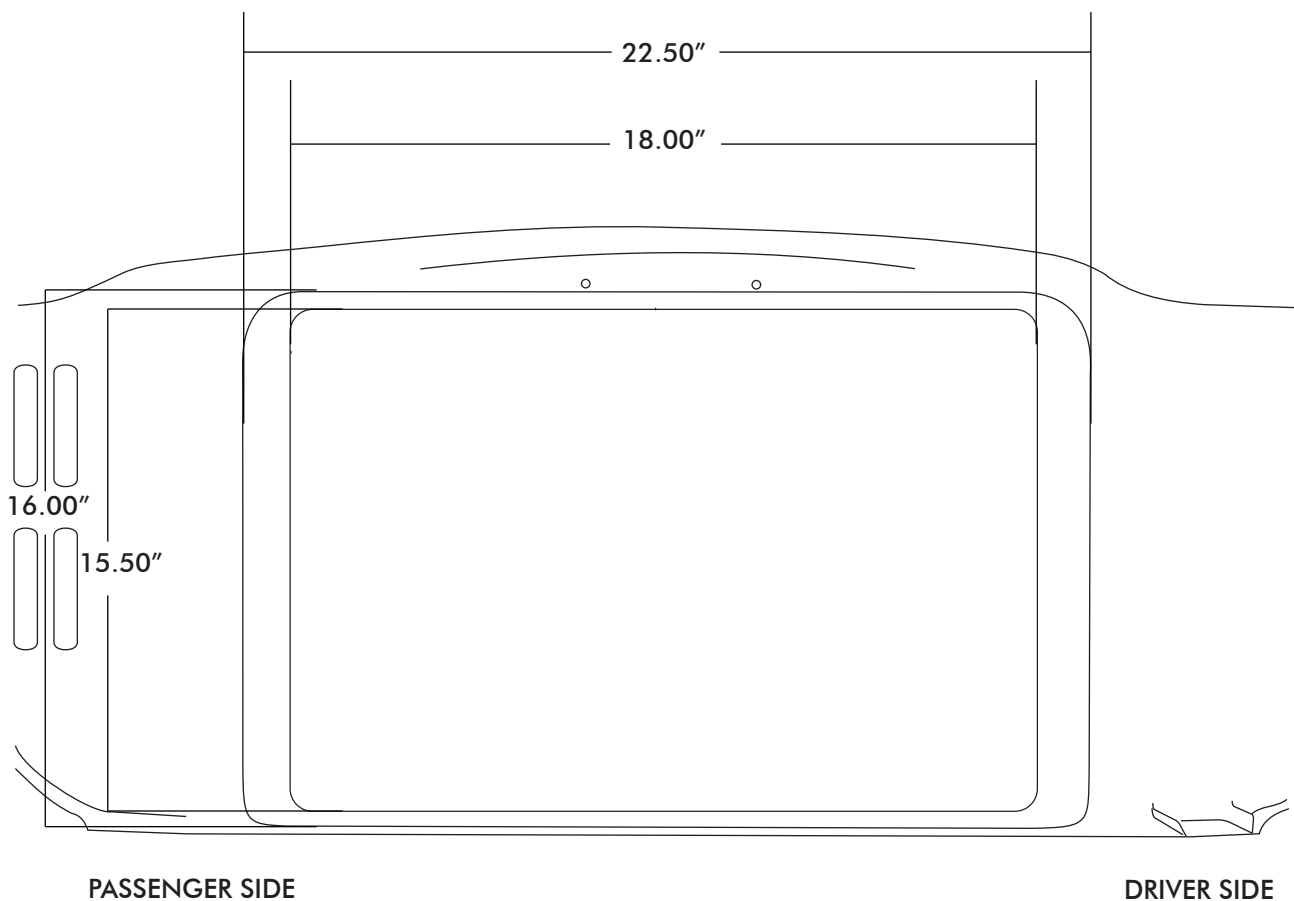




1964¹/₂-66 MUSTANG

IMPORTANT NOTICE-PLEASE READ

THIS KIT WAS DEVELOPED BASED ON THE MEASUREMENTS BELOW, WHICH WERE TAKEN FROM A 1965 MUSTANG CORE SUPPORT.





DRIER BRACKET INSTALLATION

ON A WORK BENCH ASSEMBLE CONDENSER AS FOLLOWS:

- INSTALL DRIER MOUNTING BRACKET ON TO CONDENSER USING (4) 10-24 X 3/8 PAN HEAD SCREWS AND (4) 10-24 NUTS WITH STAR WASHERS. SEE FIGURE 1. **NOTE: BRACKETS MOUNT THROUGH THE FIRST AND THIRD HOLE OF THE CONDENSER.**

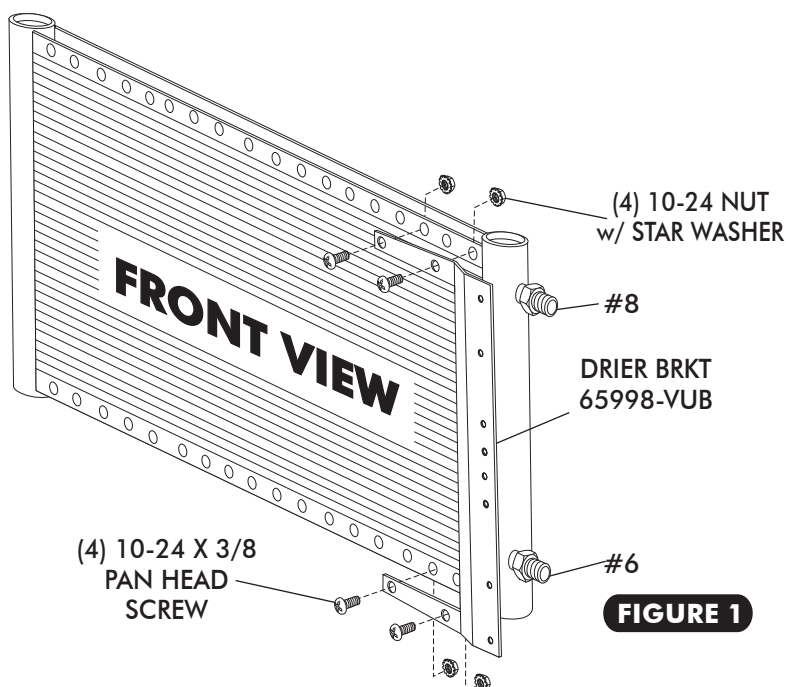


FIGURE 1

MOUNTING BRACKET INSTALLATION

- INSTALL CONDENSER MOUNTING BRACKET ON TO CONDENSER USING (4) 10-24 X 3/8 PAN HEAD SCREWS AND (4) 10-24 NUTS WITH STAR WASHERS. SEE FIGURE 2.

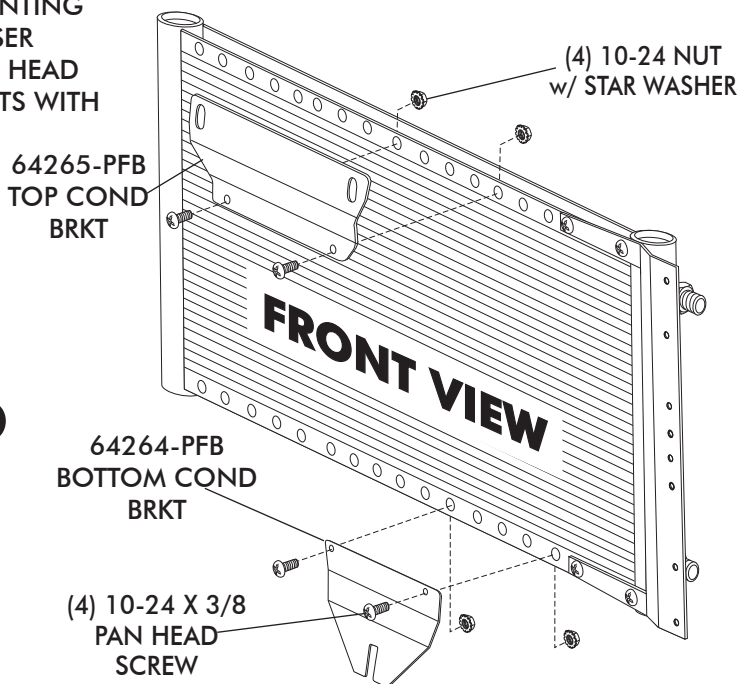


FIGURE 2



DRIER INSTALLATION

- ☐ INSTALL DRIER CLAMPS ON DRIER AS SHOWN IN FIGURE 3.
- ☐ USING (2) #10 X 1/2 SHEETMETAL SCREWS, INSTALL DRIER ON BRACKET IN THE 6TH AND 7TH HOLES FROM THE BOTTOM OF BRACKET AS SHOWN.

NOTE: REFRIGERANT FLOW THROUGH DRIER IS IN FROM CONDENSER, OUT TO EVAPORATOR.

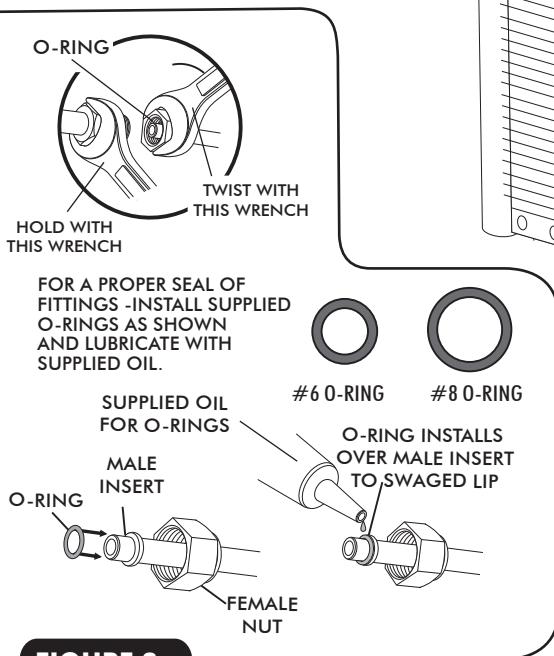


FIGURE 3a

HARDLINE INSTALLATION

- ☐ LUBRICATE (2) #6 O-RINGS SEE FIGURE 3a ABOVE, AND INSTALL THE #6 DRIER/COND HARDLINE AS SHOWN IN FIGURE 4. TIGHTEN FITTINGS AS SHOWN IN FIGURE 3a.

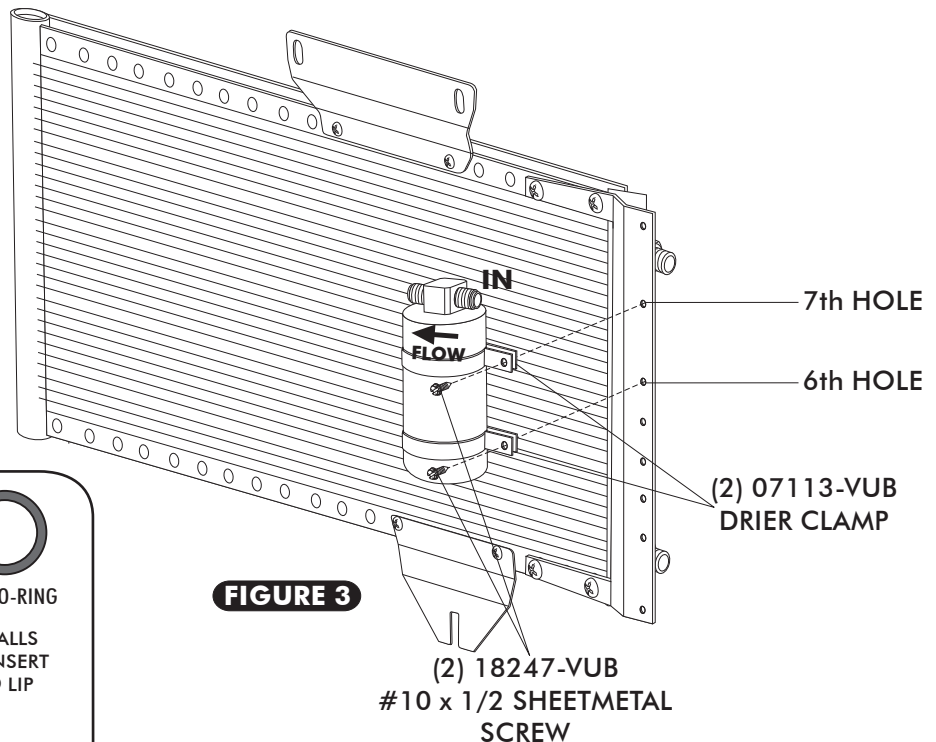


FIGURE 3

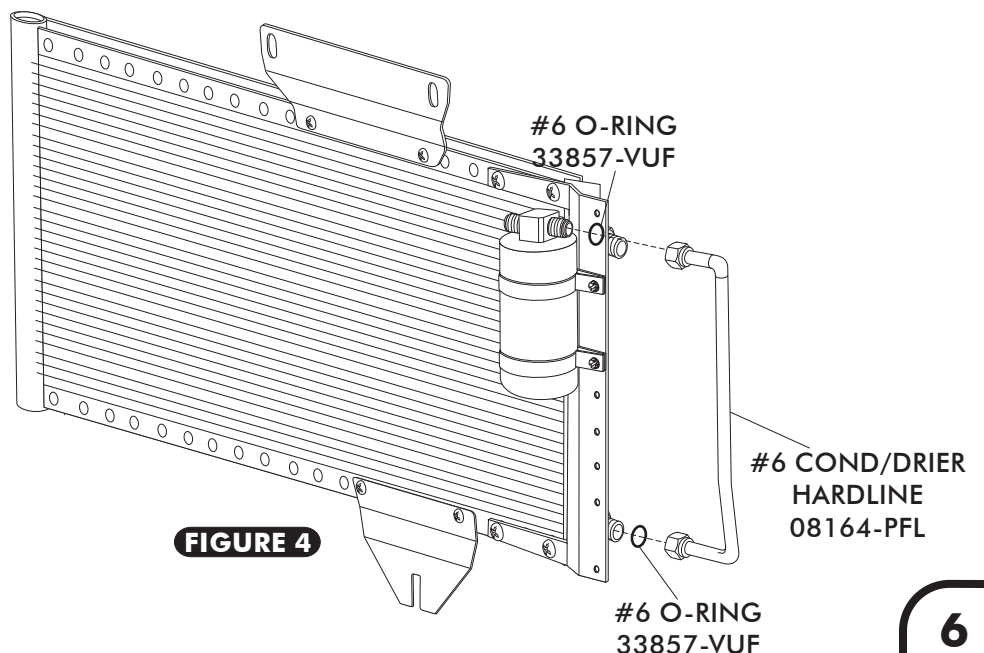
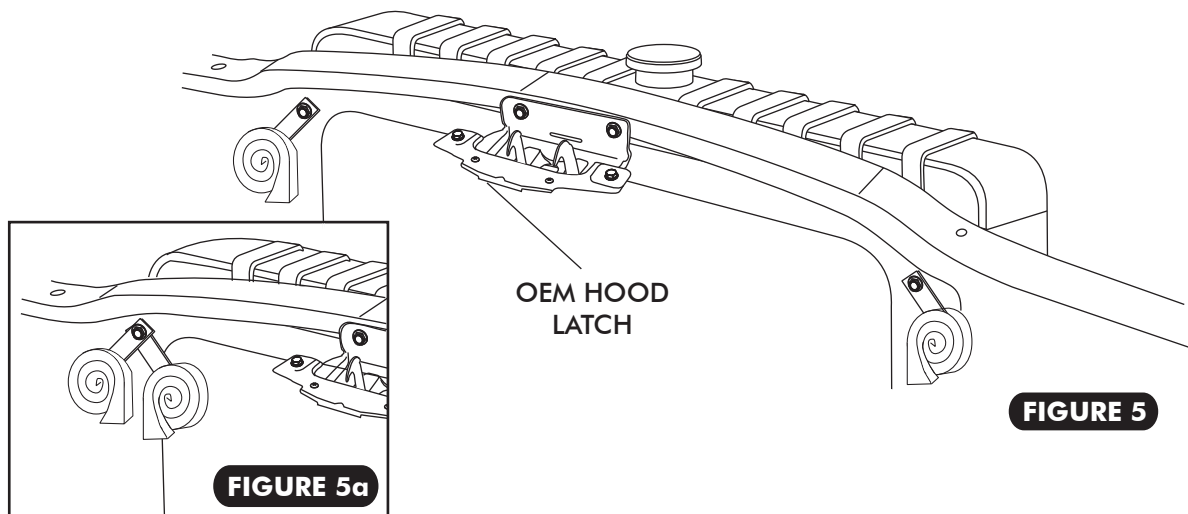


FIGURE 4



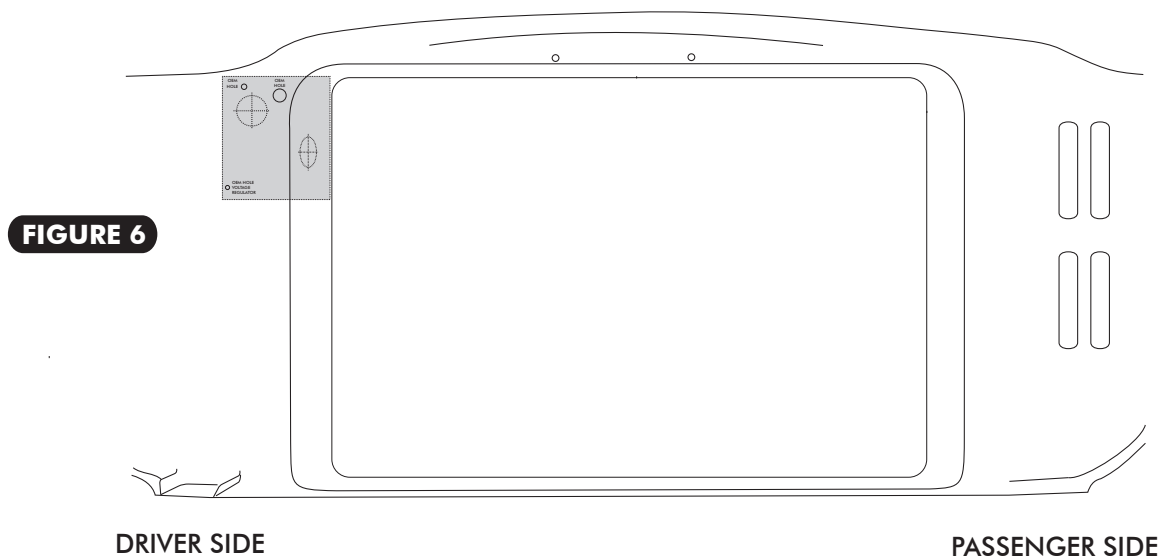
HOOD LATCH ASSEMBLY

- ☐ REMOVE OEM HOOD LATCH ASSEMBLY.
SEE FIGURE 5 BELOW.
- ☐ REMOVE OEM DRIVER SIDE HORN. RELOCATE TO PASSENGER SIDE. SEE FIGURE 5 AND 5a.



CORE SUPPORT MODIFICATION

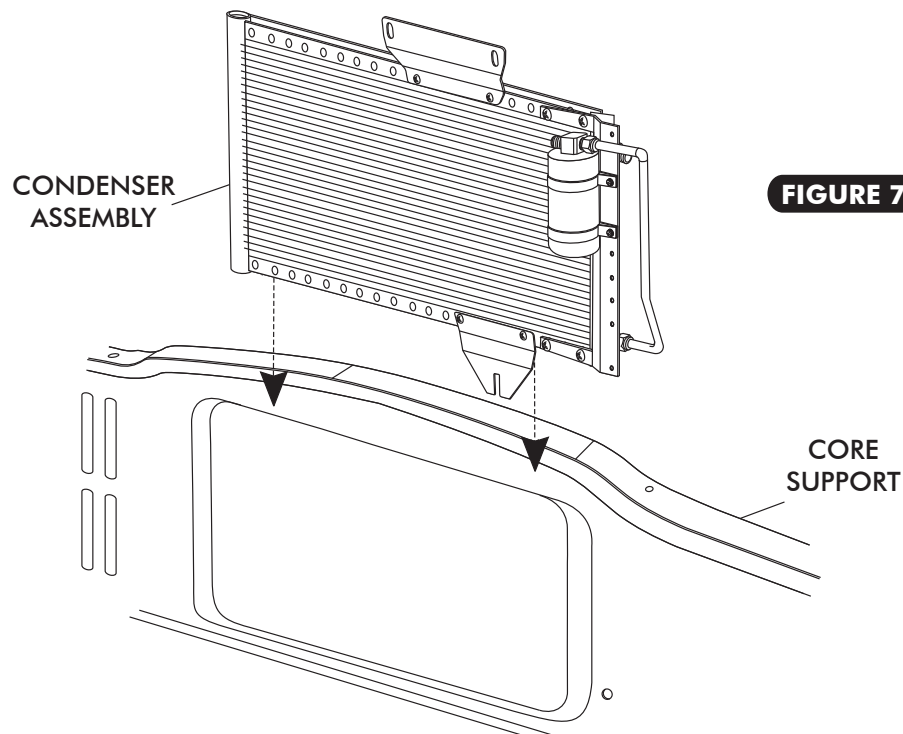
- ☐ USING TEMPLATE PROVIDED ON PAGE 10, CUT OUT TEMPLATE AND PLACE ON BACK OF CORE SUPPORT AS SHOWN IN FIGURE 6.
- ☐ USING A 1 1/4" HOLE SAW, DRILL HOLES IN CORE SUPPORT.



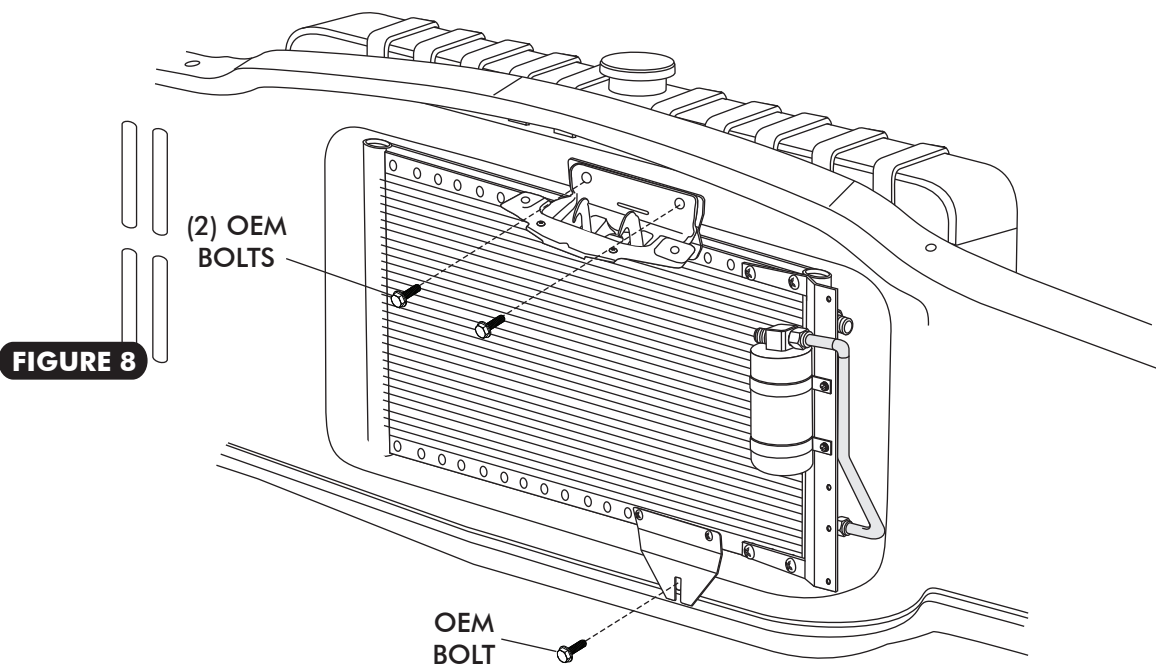


CONDENSER INSTALLATION

- INSTALL CONDENSER IN FRONT OF CORE SUPPORT AS SHOWN BELOW IN FIGURE 7.



- USING OEM BOLTS RE-INSTALL HOOD LATCH ASSEMBLY. INSTALL OEM BOLTS THROUGH THE HOOD LATCH ASSEMBLY AND THE CONDENSER/BRACKET ASSEMBLY INTO THE CORE SUPPORT. SEE FIGURE 8.



- USING OEM BOLT ATTACH BOTTOM OF HOOD LATCH ASSEMBLY. INSTALL OEM BOLTS THROUGH BOTTOM OF HOOD LATCH ASSEMBLY AND THE CONDENSER/BRACKET ASSEMBLY INTO THE CORE SUPPORT.



HARDLINE INSTALLATION

- LUBRICATE A #6 AND #8 O-RING AS SHOWN IN FIGURE 3a ON PAGE 6. INSTALL THE #6 DRIER HARDLINE AND THE #8 CONDENSER HARDLINE AS SHOWN IN FIGURE 9. TIGHTEN FITTINGS AS SHOWN IN FIGURE 3a ON PAGE 6.

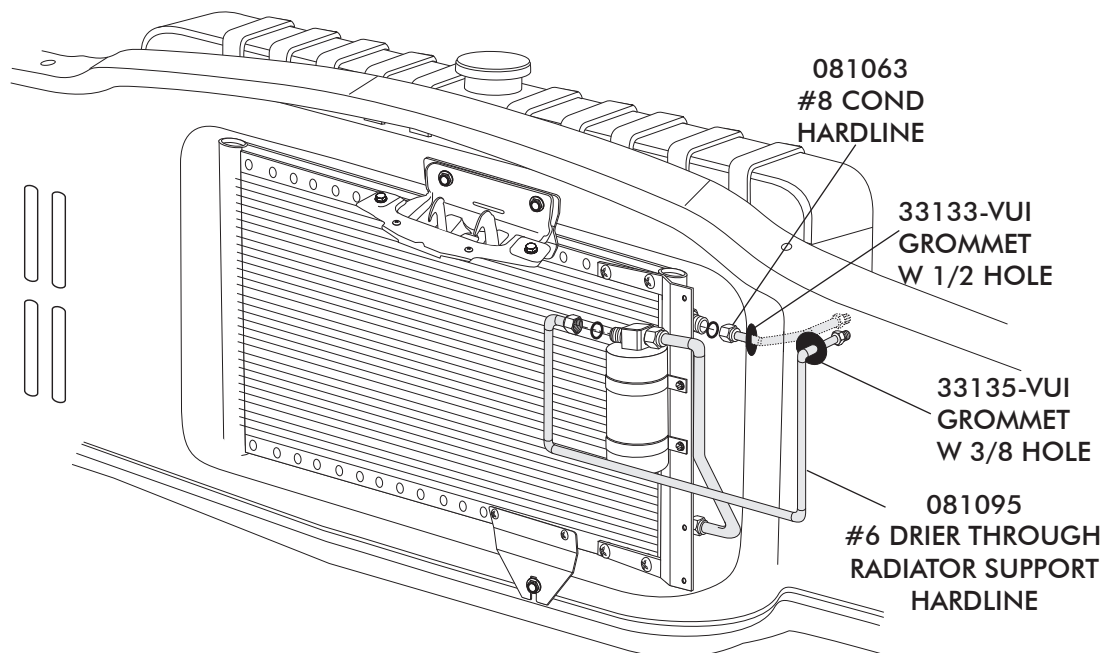
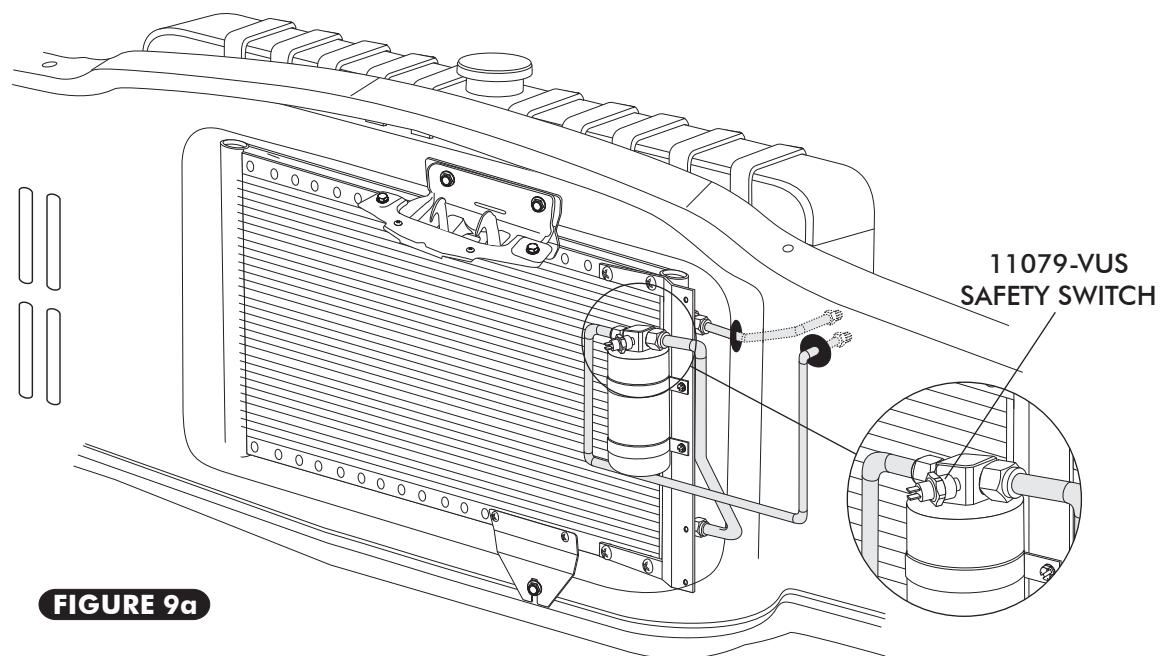


FIGURE 9

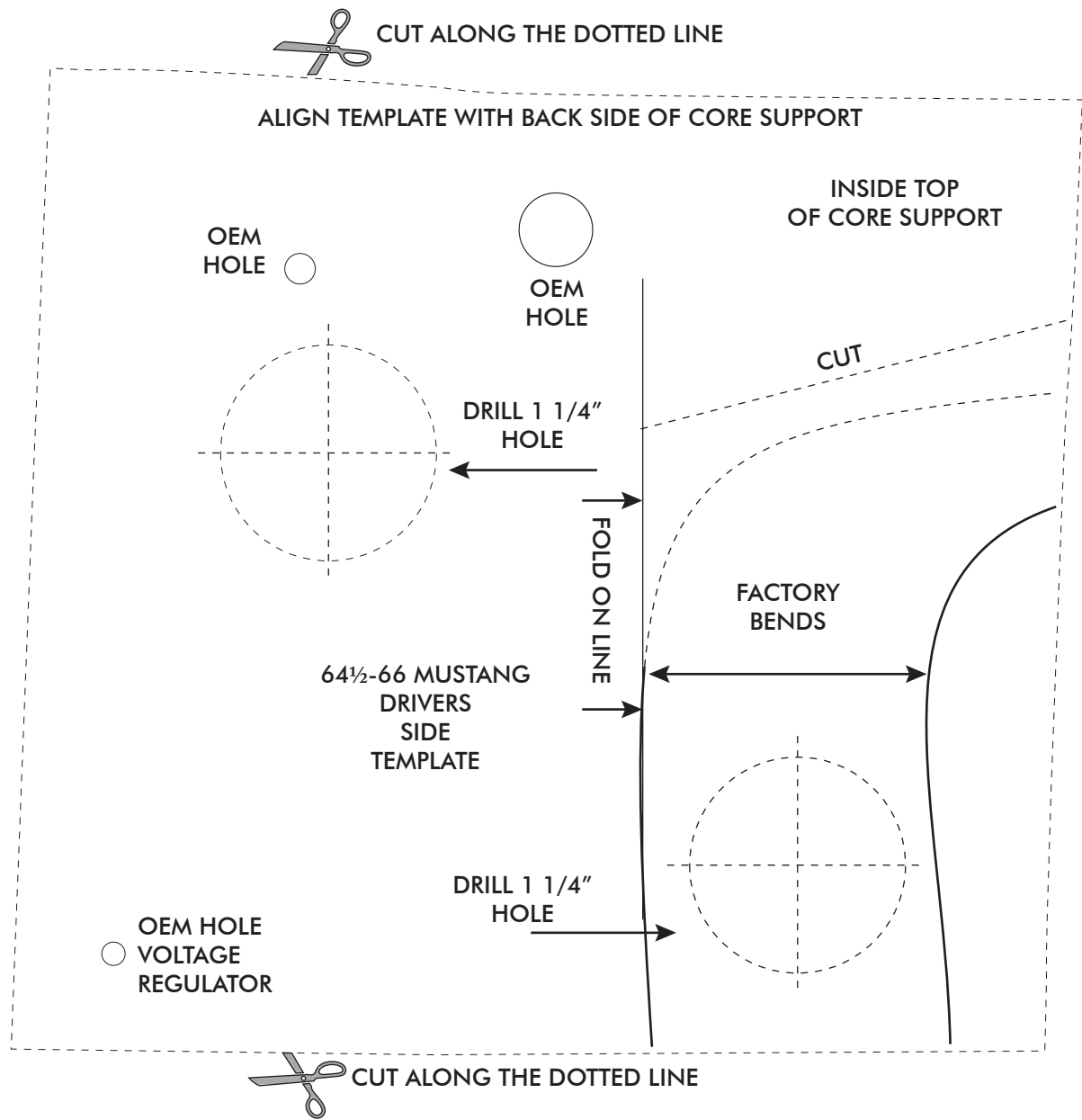
BINARY SWITCH INSTALLATION

- INSTALL BINARY SWITCH ON DRIER AS SHOWN IN FIGURE 9a





CORE SUPPORT MODIFICATION TEMPLATE





1964½-66 MUSTANG CONDENSER w/DRIER PACKING LIST

CONDENSER KIT
011065

NO.	QTY.	PART NO.	DESCRIPTION	
1.	1	03765-VUC	SUPER FLOW CONDENSER 14 X 20	_____
2.	1	07321-VUC	DRIER	_____
3.	2	07113-VUB	DRIER CLAMP	_____
4.	1	65998-VUB	UNIVERSAL DRIER BRKT 14 3/4	_____
5.	1	64265-PFB	64½-66 MUSTANG UPPER COND BRKT	_____
6.	1	64264-PFB	64½-66 MUSTANG LOWER COND BRKT	_____
7.	1	081095	#6 DR/CORE HARDLINE	_____
8.	1	08164-PFL	#6 DRIER/COND HARDLINE	_____
9.	1	081063	#8 COND HARDLINE	_____
10.	8	18260-VUB	10-24 NUT W/STAR WASHER	_____
11.	8	18249-VUB	10-24 X 3/8 PAN HEAD SCREW	_____
12.	3	33857-VUF	#6 O-RING	_____
13.	1	33858-VUF	#8 O-RING	_____
14.	2	18247-VUB	#10 X 1/2 SHEETMETAL SCREW	_____
15.	1	11079-VUS	MALE BINARY SWITCH	_____
16.	1	23135-VUW	COMPRESSOR LEAD	_____
17.	1	33135-VUI	GROMMET 1-1/4 X 1 W 3/8 HOLE	_____
18.	1	33133-VUI	GROMMET 1-1/4 X 1 W 1/2 HOLE	_____

CHECKED BY: _____
PACKED BY: _____
DATE: _____

