



an ISO 9001:2008 Registered Company

1949-59 Studebaker Truck

Condenser Kit
with Drier
061000

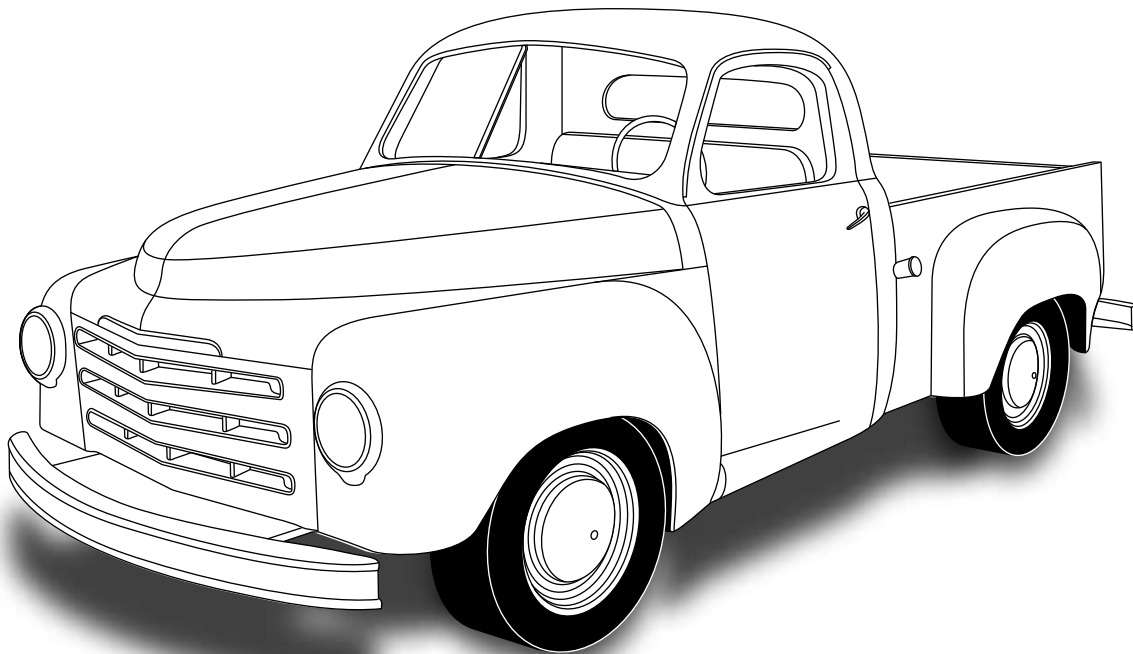




Table of Contents

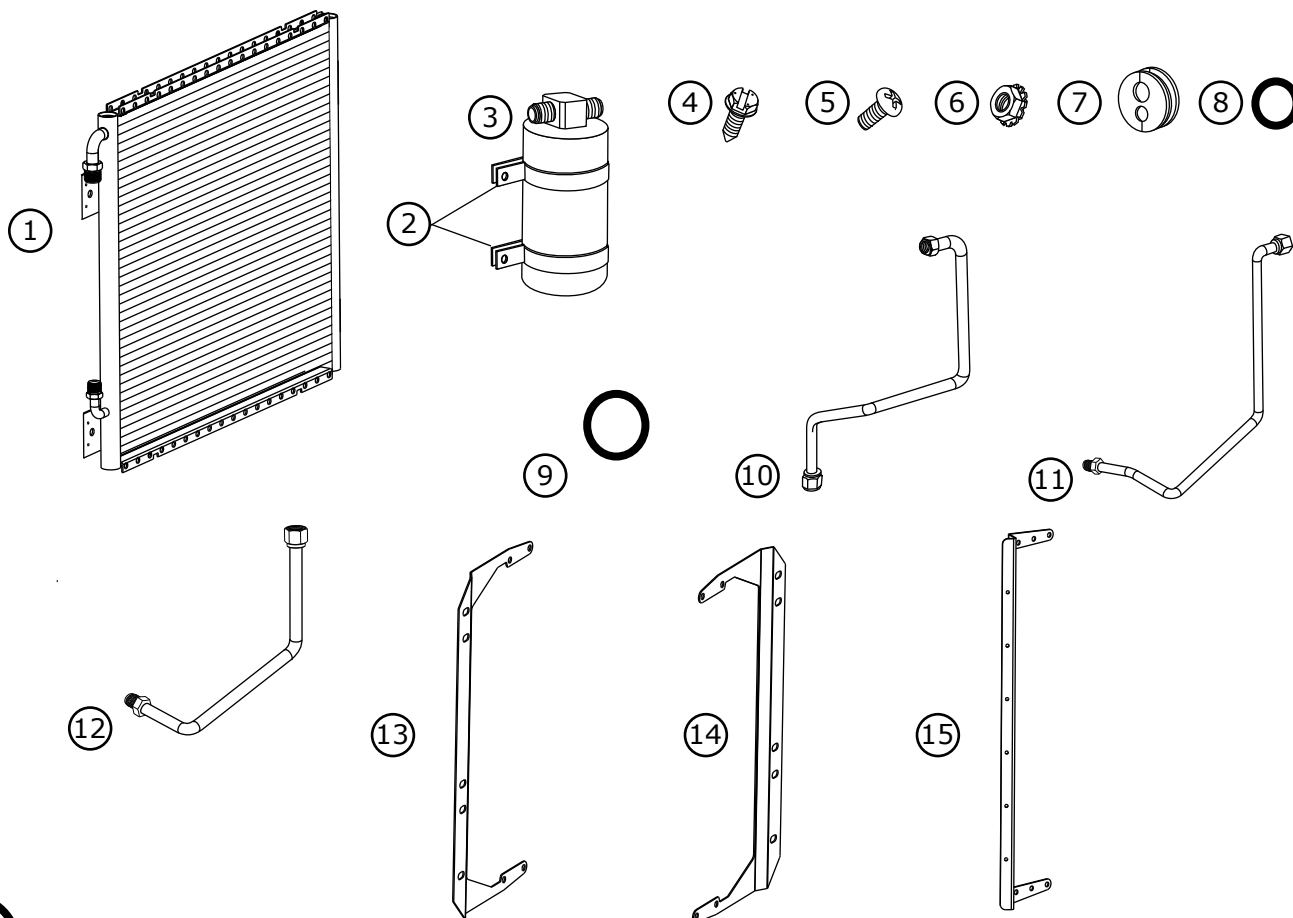
- 1. Cover**
- 2. Table of Contents**
- 3. Packing List/Parts Disclaimer**
- 4. Mounting Bracket & Core Support Modification**
- 5. Drier Bracket & Drier Installation**
- 6. Condenser Installation**
- 7. Hardline Installation**
Figure 1
- 8. Packing List**



Packing List: 1949-59 Studebaker Truck Condenser Kit with Drier (061000)

No.	Qty.	Part No.	Description
1.	1	03768-VUC	17" x 19" Super Flow Condenser
2.	2	07113-VUB	Drier Clamp
3.	1	07321-VUC	Drier
4.	2	18247-VUB	Screw, #10 x 1/2" Hex
5.	12	18249-VUB	Screw, 10-24 x 3/8" Pan Head
6.	12	18260-VUB	Nut with Star Washer, 10-24
7.	1	33134-VUI	Grommet, 2-Hole
8.	3	33857-VUF	#6 O-ring
9.	1	33858-VUF	#8 O-ring
10.	1	121012	Hardline, 1949-59 Studebaker Truck #6 Condenser/Drier
11.	1	121013	Hardline, 1949-59 Studebaker Truck #6 Drier/Core Support
12.	1	121014	Hardline, 1949-59 Studebaker Truck #8 Condenser/Compressor
13.	1	657007	Bracket, 1949-59 Studebaker Truck Driver Side Condenser
14.	1	657008	Bracket, 1949-59 Studebaker Truck Passenger Side Condenser
15.	1	64776-VUB	Bracket, 17" Universal Drier

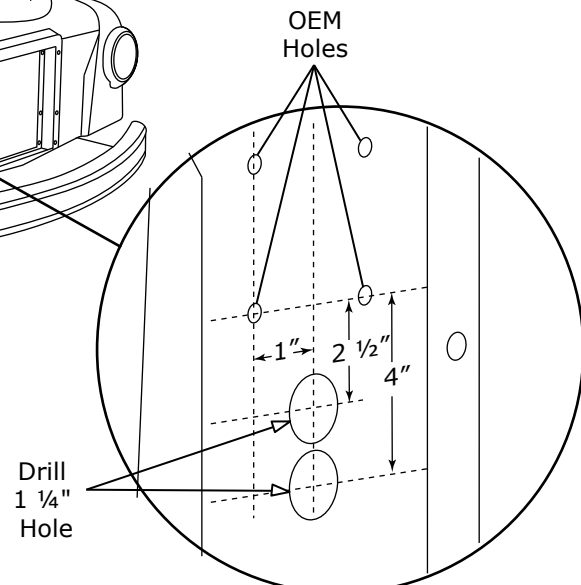
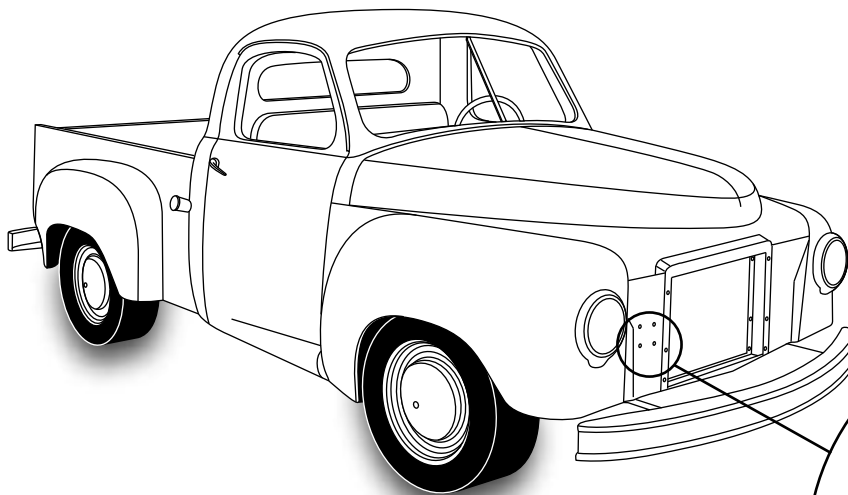
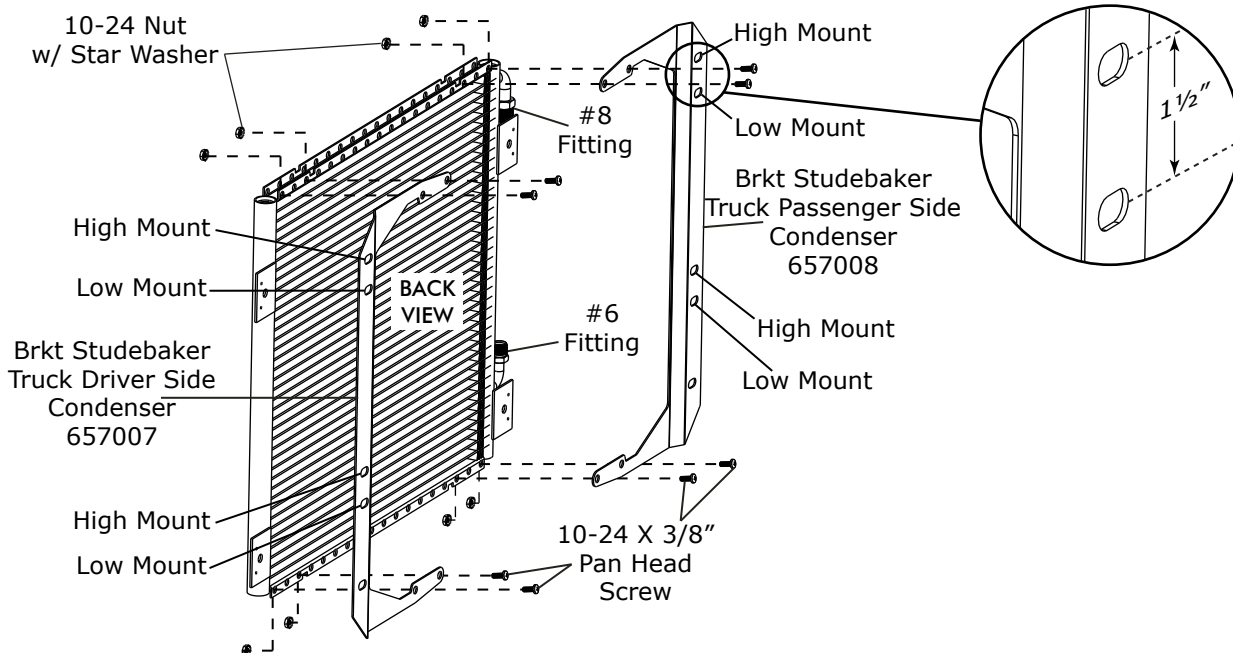
****Before beginning installation, open all packages and check contents of shipment.
Please report any shortages directly to Vintage Air within 15 days. After 15 days,
Vintage Air will not be responsible for missing or damaged items.**





Mounting Bracket & Core Support Modification

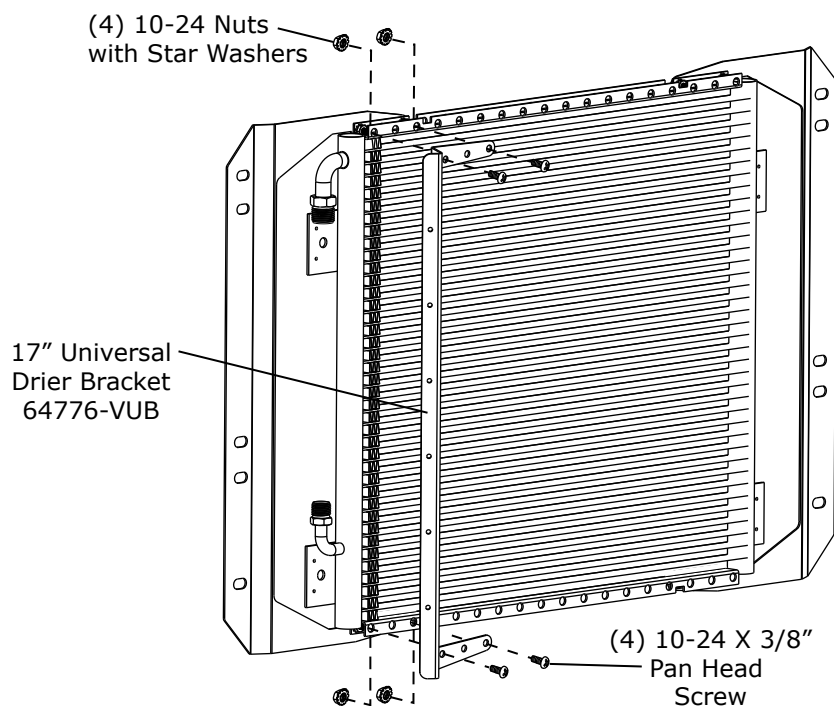
1. Install mounting brackets onto back of condenser using 10-24 x 3/8" pan head screws and 10-24 nuts with star washers. **NOTE: Bracket mounts through the 1st & 3rd holes of condenser.**
2. Install condenser assembly to radiator, and note condenser bracket mounting location. Determine which mounting slot is used in radiator to core assembly. **NOTE: Condenser brackets can be installed in 2 ways: High Mount or Low Mount.**
3. Mark and drill a 1 1/4" hole through the core support once mounting location has been determined.





Drier Bracket Installation

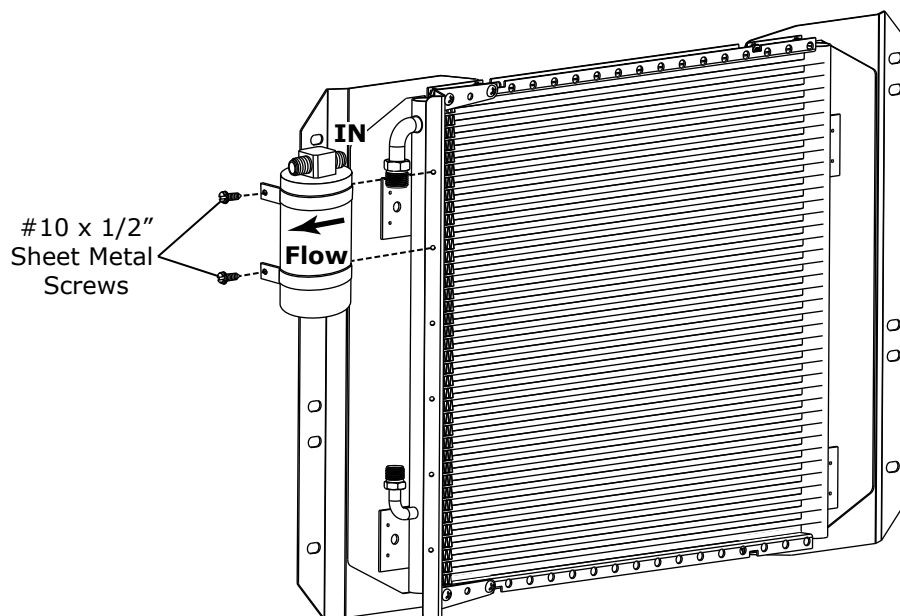
1. Install drier bracket onto condenser using 10-24 x 3/8" pan head screws and 10-24 nuts with star washers.
NOTE: Bracket mounts through 1st and 3rd holes.



Drier Installation

1. Install drier clamps on drier as shown.
2. Using #10 x 1/2" sheet metal screws, install drier on bracket in the 5th and 6th holes from the bottom as shown below.

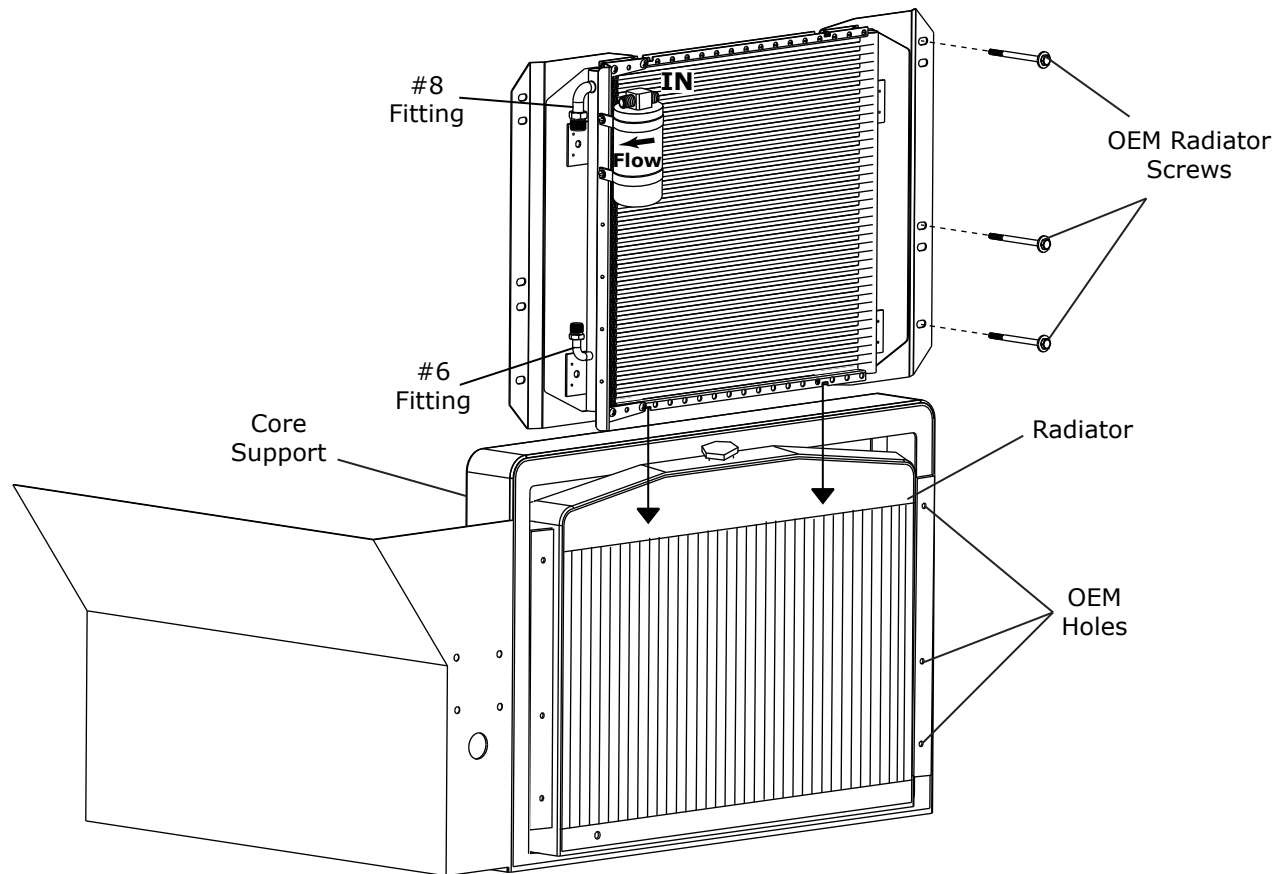
NOTE: Refrigerant flow through drier is IN from condenser, OUT to evaporator.





Condenser Installation

1. Install condenser assembly in front of radiator using (6) OEM radiator screws.





Hardline Installation

1. Lubricate (2) #6 O-rings and install the #6 drier/condenser hardline as shown. Tighten fittings (See Figure 1, below).
2. Install 2-hole grommet in core support.
3. Lubricate #6 O-ring and install the #6 drier/core support hardline as shown. Tighten fittings (See Figure 1, below).
4. Lubricate #8 O-ring and install the #8 condenser/compressor hardline as shown. Tighten fittings (See Figure 1, below).

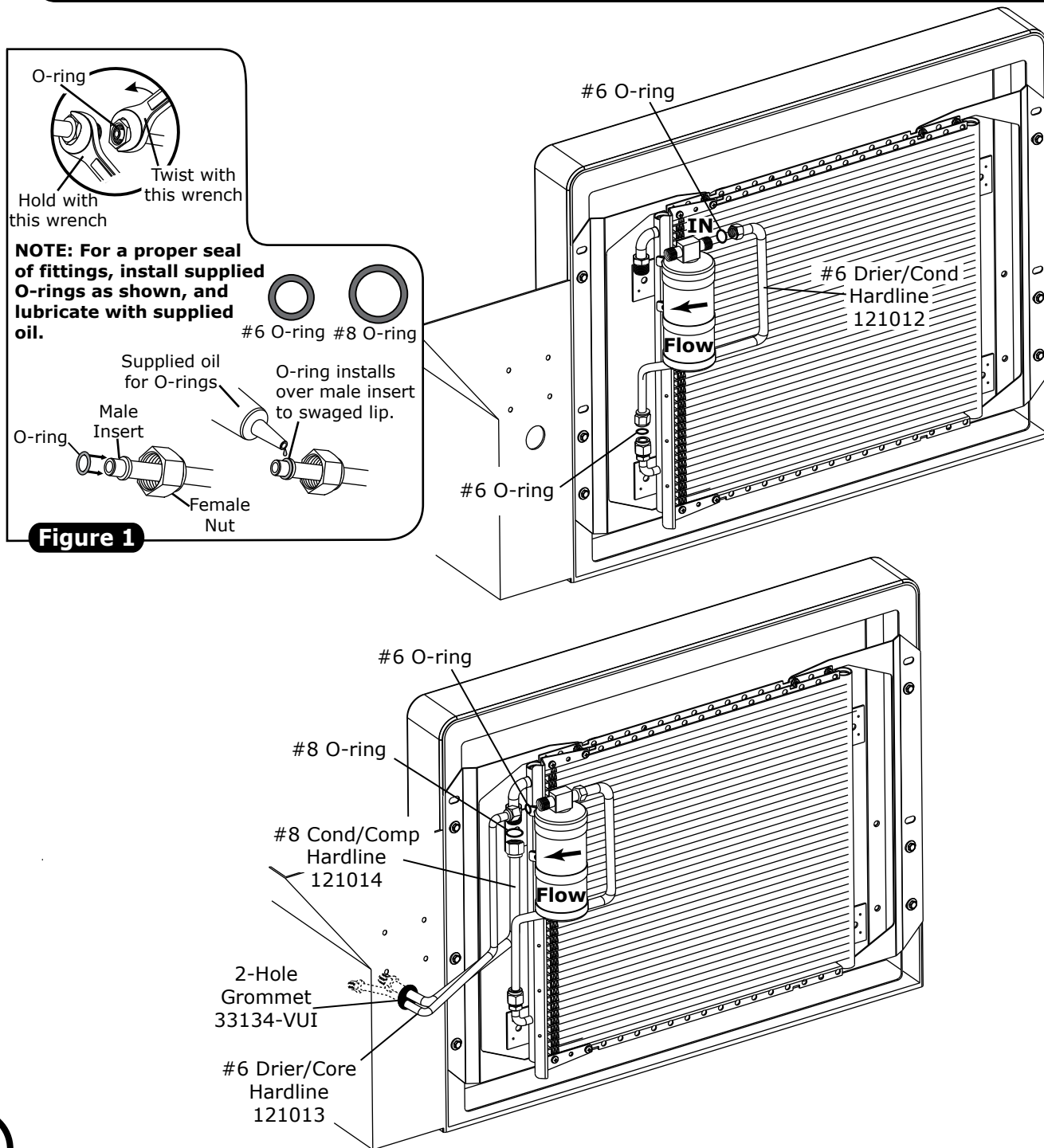


Figure 1



Packing List: 1949-59 Studebaker Truck Condenser Kit with Drier (061000)

No.	Qty.	Part No.	Description
1.	1	03768-VUC	17" x 19" Super Flow Condenser
2.	2	07113-VUB	Drier Clamp
3.	1	07321-VUC	Drier
4.	2	18247-VUB	Screw, #10 x 1/2" Hex
5.	12	18249-VUB	Screw, 10-24 x 3/8" Pan Head
6.	12	18260-VUB	Nut with Star Washer, 10-24
7.	1	33134-VUI	Grommet, 2-Hole
8.	3	33857-VUF	#6 O-ring
9.	1	33858-VUF	#8 O-ring
10.	1	121012	Hardline, 1949-59 Studebaker Truck #6 Condenser/Drier
11.	1	121013	Hardline, 1949-59 Studebaker Truck #6 Drier/Core Support
12.	1	121014	Hardline, 1949-59 Studebaker Truck #8 Condenser/Compressor
13.	1	657007	Bracket, 1949-59 Studebaker Truck Driver Side Condenser
14.	1	657008	Bracket, 1949-59 Studebaker Truck Passenger Side Condenser
15.	1	64776-VUB	Bracket, 17" Universal Drier

Checked By: _____
Packed By: _____
Date: _____

