

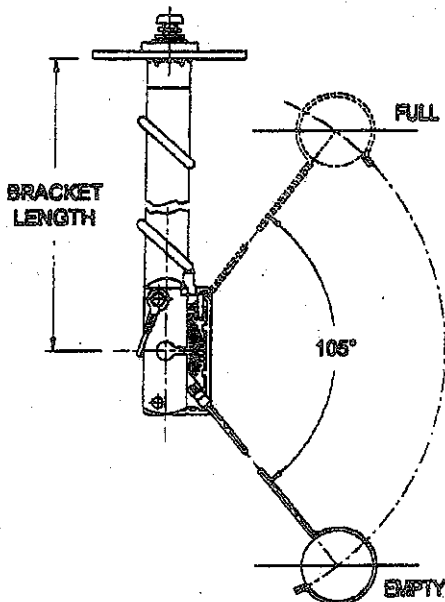


# INSTALLATION INSTRUCTIONS



## 391/439 SERIES BRACKET-TYPE FUEL SENDER

TANK DEPTH	BRACKET LENGTH	TANK DEPTH	BRACKET LENGTH	TANK DEPTH	BRACKET LENGTH
10.00	5.19	15.00	7.69	20.00	10.19
10.50	5.44	15.50	7.94	20.50	10.44
11.00	5.69	16.00	8.19	21.00	10.69
11.50	5.94	16.50	8.44	21.50	10.94
12.00	6.19	17.00	8.69	22.00	11.19
12.50	6.44	17.50	8.94	22.50	11.44
13.00	6.69	18.00	9.19	23.00	11.69
13.50	6.94	18.50	9.44	23.50	11.94
14.00	7.19	19.00	9.69	24.00	12.19
14.50	7.44	19.50	9.94		

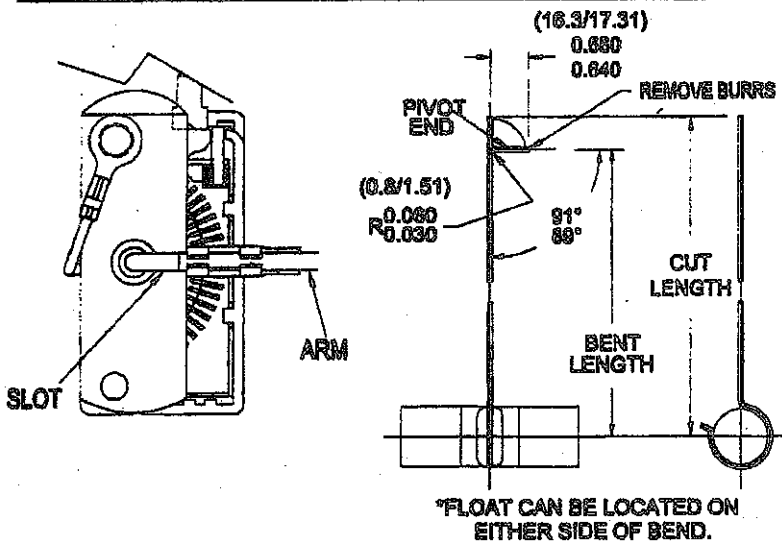


### CAUTION

Use extreme caution when working around fuel. Work in well ventilated area and keep all hot materials away. Consult vehicle service manual if fuel tank must be removed.

### CAUTION

A new gasket must be placed between the flange of the sender and the flange of the tank during final installation.



TANK DEPTH	CUT LENGTH	BENT LENGTH
10.00	5.94	5.19
10.50	6.25	5.50
11.00	6.56	5.81
11.50	6.87	6.12
12.00	7.19	6.44
12.50	7.50	6.75
13.00	7.81	7.06
13.50	8.13	7.38
14.00	8.44	7.69
14.50	8.75	8.00
15.00	9.06	8.31
15.50	9.25	8.50
16.00	9.63	8.88
16.50	9.94	9.19
17.00	10.25	9.50

TANK DEPTH	CUT LENGTH	BENT LENGTH
17.50	10.56	9.81
18.00	10.87	10.12
18.50	11.19	10.44
19.00	11.50	10.75
19.50	11.87	11.12
20.00	12.19	11.44
20.50	12.50	11.75
21.00	12.75	12.00
21.50	13.13	12.38
22.00	13.44	12.69
22.50	13.75	13.00
23.00	14.06	13.31
23.50	14.37	13.62
24.00	14.69	13.94

### FOR PIVOT-END ARM ADJUSTMENT

Determine float arm length required for tank depth and cut float arm wire to cut length shown to table. Bend wire sharply at right angle (90°) to 'Shepherd's Crook.'

Align arm with slot in the bracket. Insert the pivot end of the float arm into the hole and snap the wire into the follower.

When unit is side mounted, the float arm will require additional adjustment.