



QUALITY... PLAIN & SIMPLE®

Stainless Steel Carburetor Bracket & Stainless Springs Installation Instructions

General Installation Notes:

Please read instructions completely before beginning installation. If you have any questions please call.

Before starting installation, scotch vehicle tires to avoid accidental movement of the vehicle. Do not attempt to install this product while the engine is running. Disconnect negative battery cable before beginning installation.

The Lokar Stainless Steel Carburetor Bracket and Stainless Springs kit is designed to be used with a Lokar Throttle Cable.

Step 1: Remove the carburetor base mounting bolt from the left rear corner of the carburetor, and position the Lokar carburetor bracket as shown in **Fig. 1**. Install the carburetor base mounting bolt only finger-tight.

Step 2: Position the carburetor bracket so that the bend that is labeled in **Fig. 1** is parallel to the carburetor base front to back.

Step 3: Tighten the set screw until it touches the carburetor base, and then lock it in place with the jam nut.

Step 4: Tighten the carburetor base mounting bolt.

Step 5: If you are using a kickdown cable, install the tear drop between the kickdown connector and the carburetor throttle arm. Connect the springs to the carburetor bracket and the tear drop.

If you are not using a kickdown cable, the tear drop is not required. The front of the springs can be hooked directly into the carburetor throttle arm through the hole for the kickdown connector. If you prefer to use the tear drop anyway, you can attach it to the carburetor throttle arm using a 1/4" diameter bolt and nut (not supplied) through the kickdown connector hole, and then hook the front of the springs into the tear drop.

Stainless Steel Carburetor Bracket & Stainless Springs Installation Instructions

Building American Quality... With A Lifetime Warranty!®

10924 Murdock Dr. • Knoxville, TN 37932

TOLL FREE 1-877-469-7440 • (865) 966-2269 • FAX (865) 671-1999 • tech@lokar.com • www.lokar.com

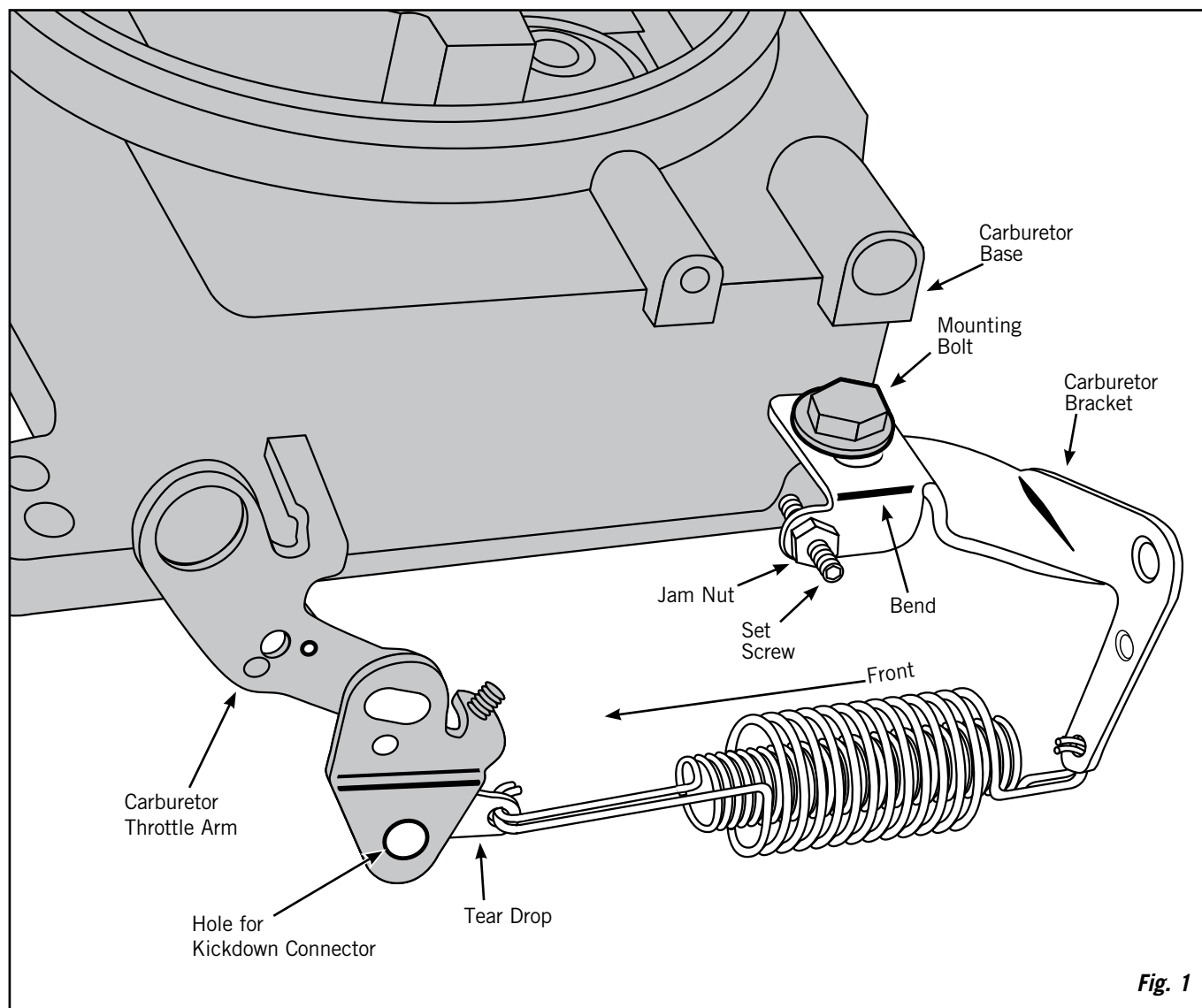


Fig. 1