

PLEASE READ THE INSTRUCTIONS CAREFULLY BEFORE FITTING THE KIT.**If you have a problem, however small, call our Technical Department.**

Tel:- 01925 636950. Fax:- 01925 243111. Mon - Thurs 8.30 - 5pm.

- 1** Remove the three air box retaining nuts, loosen the inlet hose retaining clip on the plenum chamber, and remove the vacuum pipe from the plenum chamber to the air box. Remove the complete air box assembly, warm air feed and inlet hose. **Drawing A sequence 1.**
- 2** Seal the vacuum pipe connection on the rear of the plenum chamber with the rubber plug provided. Re-route the radiator to expansion tank hose to a position across the top of the engine and tie this hose to the 'engine to expansion tank' hose with the tie provided. Unclip the main wiring loom from the front of the suspension turret and reposition the loom at the rear of the turret. **Drawing A sequence 2 to 4.**
- 3** Fit the short end of the new intake hose to the plenum chamber, tighten the clip until the hose just rotates, do not fully tighten the clip at this point as further adjustment of the hose is required. **Drawing A sequence 5.**
- 4** Fit the metal tube up to the step in the filter base, do not push the tube beyond the step as this will reduce air flow. Tighten the clip until the filter just rotates, then give one full turn (360 degrees). No more. **Don't overtighten the clips.**
- 5** Fit the filter to the intake hose, and adjust its position until it is just below a straight edge placed between the suspension turret and the cam belt cover. Once in position firmly tighten the two hose clips. **Drawing B.**
- 6** **Cold air system**
Carefully expand the cold air hose to 64cm / 25". Remove the radiator grille. Feed the cold air hose between the radiator and front panel, below the top hose, radiator mounting bracket, and above the power steering pump, to a position behind the grille. **Drawing C.**
- 7** Pierce / drill two holes, approximately 5mm diameter, through the plastic sleeve and flexi hose front section and tie this end to the front grille. Replace the grille. **Drawing D.**
- 8** Position the cold air hose to finish approximately 10cm/4" from the filter (**no nearer**), and tie through the hole in the slam panel supporting strut adjacent to the headlight. **Drawing E.**
- 9** **Tuning.**
CAT. Cars. No adjustments are required.
An increase in fuel mixture may be required if further modifications are carried out.
- 10** **Filter maintenance.**
Under normal conditions clean and reoil the filter at approx. 40,000 miles / 65,000 Km.
Use only K&N cleaner and oil and follow the instructions carefully.

K&N filters are pre-oiled ready to fit.**The advantage's of K&N's cold air intake system.**

Cooler air being denser, will show positive improvements in power over filter systems that draw hot air from the engine bay.

This Kit Should Contain

- 1 x Air Filter
- 1 x Hose Clip #48
- 1 x Metal Tube
- 1 x Rubber Intake Hose
- 1 x Cold Air Hose Assembly
- 1 x Instruction Sheet
- 1 x Instruction Pack:-
 - 1 x K & N Window Sticker
 - 1 x Filter Maintenance Sheet
 - 1 x Million Mile Warranty
 - 1 x Leaflet
- 1 x Fixing Kit containing:-
 - 1 x Long Tie
 - 3 x Medium Ties
 - 2 x #44 Clips
 - 1 x Sealing Plug

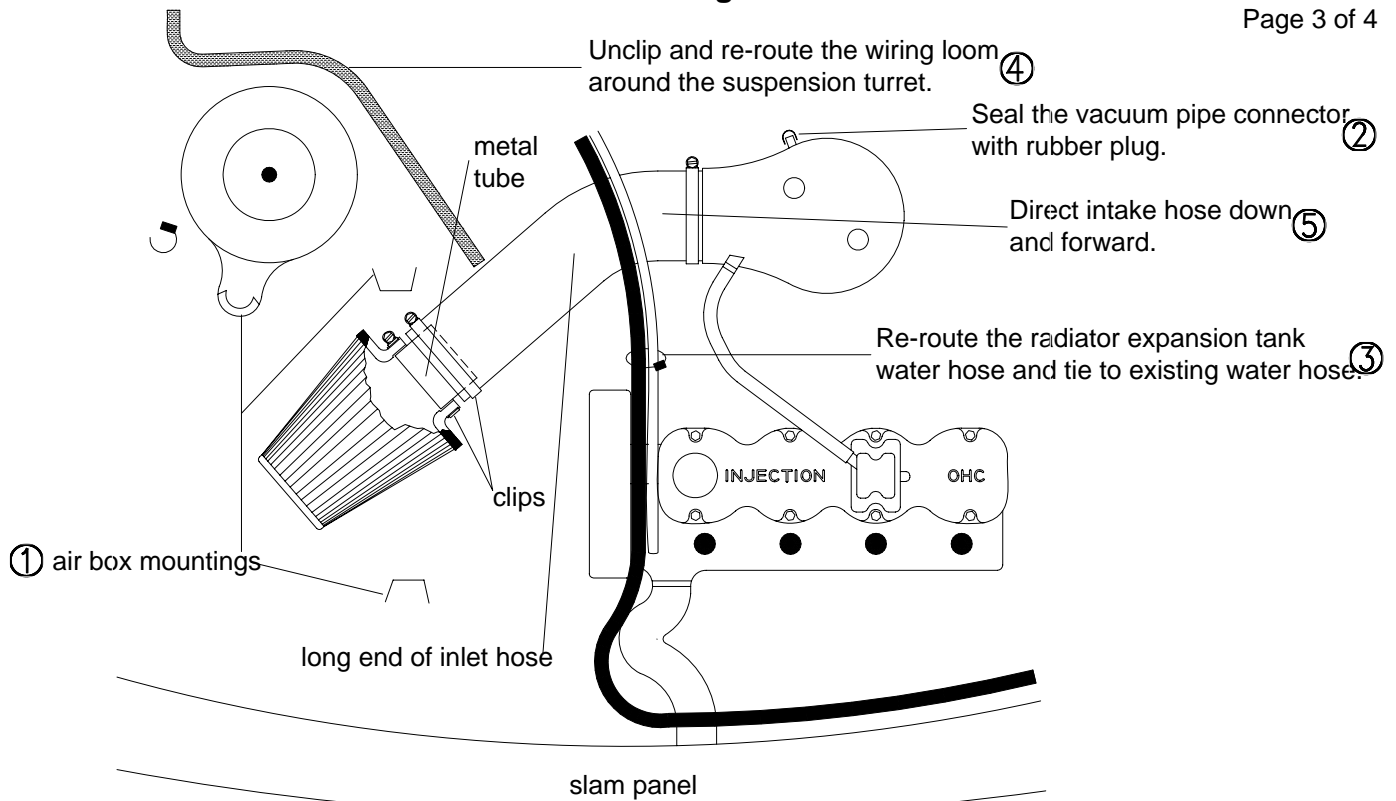
**IMPORTANT INSTRUCTIONS
FOR ROUND ENTRY
CLAMP ON AIR FILTERS**

Gently tighten the hose clip to the point where the filter will just rotate on the pipe or intake flange. Reposition the K&N logo straight, then **give the clip two turns i.e. 360 , no more.**

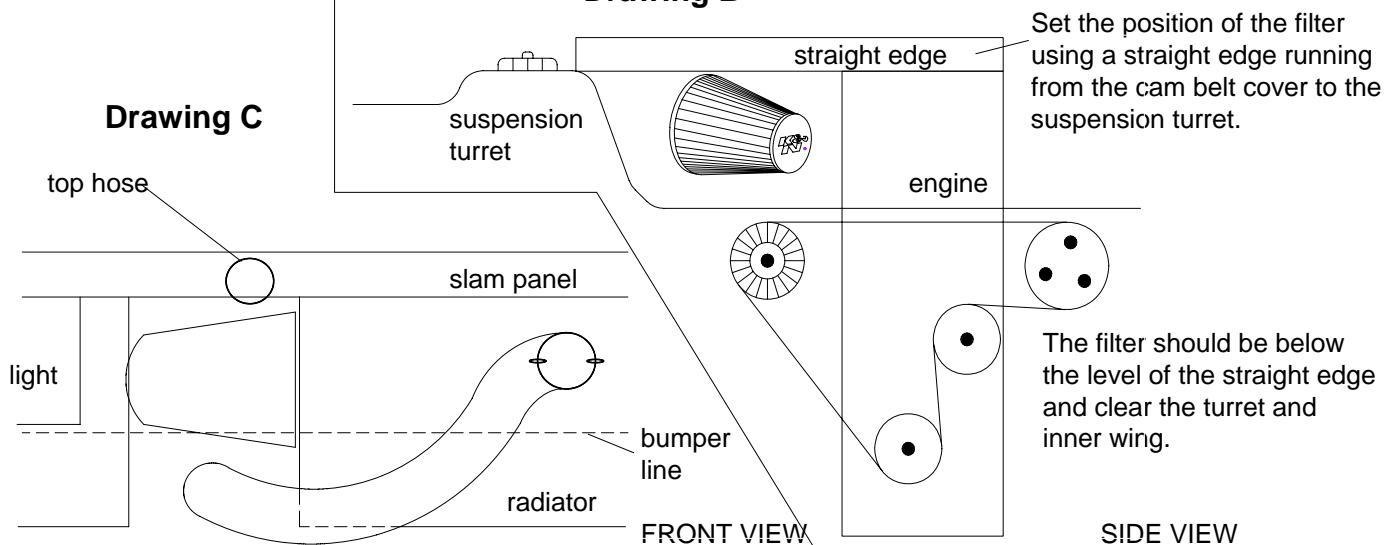
FITTING YOUR OWN 57i KIT

If not, **it is essential** that the person fitting the kit (e.g. mechanic) **carefully follows these particular instructions** even if he has fitted K&N kits before. This will save you both time and money. Kits incorrectly fitted may show a loss in performance e.g. the positioning of the essential cold air hose, (flexi expandable and rubber hoses are used).

A final check under the bonnet, by yourself, with the instructions, would seem sensible.

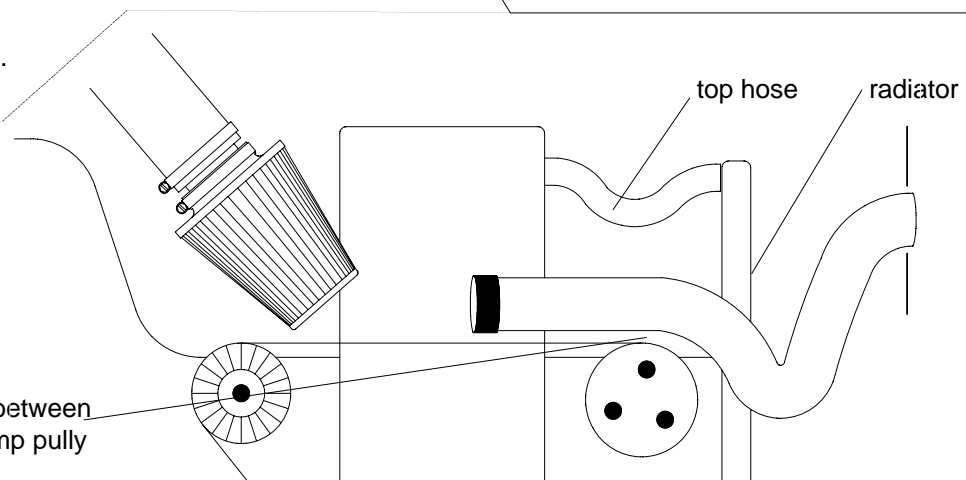


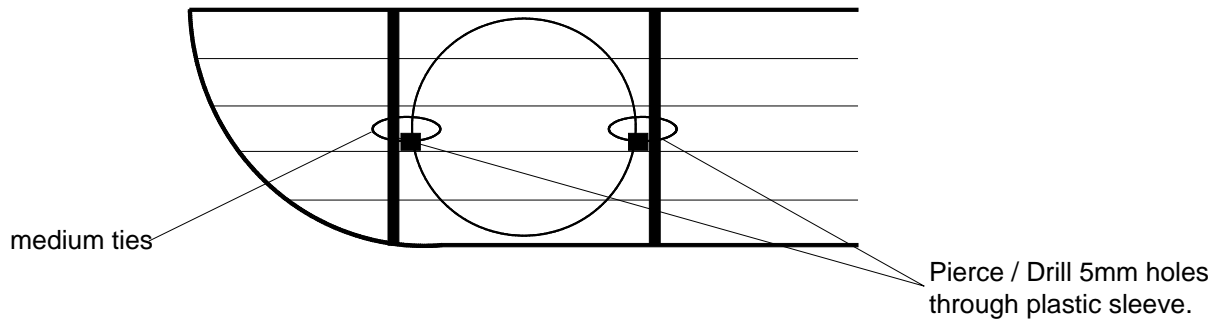
Drawing B



Feed the hose under radiator support.

Ensure clearance between power steering pump pulley and cold air hose.





Drawing E

