

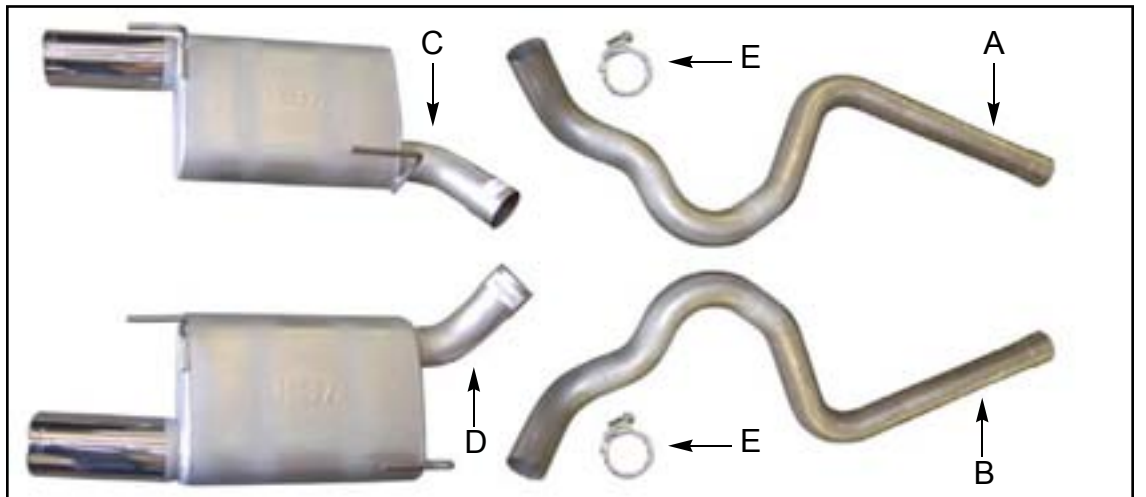
## INSTALLATION INSTRUCTIONS

\*\* Installation recommendation: JBA recommends in most case that the vehicle be taken to a reputable exhaust shop for installation.

**40-2632** 05-07 Mustang 4.6L V8  
**40-2634** 2007 Shelby GT 500 5.4L SC  
**40-2639** 3" Dual exhaust

### Parts List:

A. D/S Over axle pipe	1	Recommended Tools:
B. P/S Over axle pipe	1	pry bar
C. P/S Muffler/Tip assembly	1	ratchet
D. D/S Muffler/Tip assembly	1	15mm deep socket 9/16 deep
E. 3" Sure-Seal™ Clamp	1	socket
	2	channel lock pliers
		anti-seize
		spray lubricant or penetrating oil
		reciprocating saw or hack saw



### Start:

1. Remove and inventory the JBA Exhaust System.

2. Disconnect the negative battery cable and allow the exhaust system to completely cool.

3. Loosen the clamps attaching the exhaust to the catalytic converter assembly. Slide the clamp back to separate the two.



4. Loosen the clamp connecting the exhaust pipe to the muffler. Wiggle the exhaust pipe free from the muffler. Remove the exhaust pipe from car.



5. Using pliers or a pry bar, slide the rubber hanger from the hanger rod at inside, front of muffler (a little lube helps). Slide the muffler assembly forward and remove from slip hangers.

6. Slide the JBA muffler/tip assemblies (C) and (D) hangers into the rubber isolators on each side.



7. Install the new over axle pipes (A) and (B), slip the 3" Sure Seal™ clamps (E) onto each pipe, then insert into muffler/tip assemblies (C) and (D). Slip fit the axle-pipes (A) and (B) onto the H-pipe assembly and secure with factory clips.



9. With the axle pipes (A) and (B) in the muffler assemblies (C) and (D) adjust mufflers to be flat, and the tips an equal distance from the bumper cover, Then tighten all clamps securely.



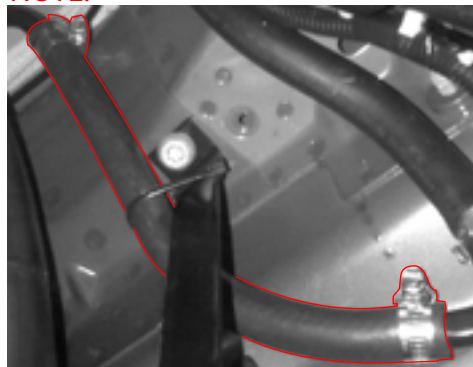
10. Using a soft cloth, wipe the new JBA tips clean.

11. Reconnect the battery and start the vehicle to check for leaks.

### NOTES:

1.) All exhaust systems expand about 1" rearward whent exhaust temperature rises.

### NOTE:



On 2008 GT500's the factory water line has been moved and is now more exposed to the exhaust system. To counter this, the metal line must be cut and rerouted, using the provided rubber tubing and clamps as shown here.

To get more power out of your Mustang, JBA offers long tube headers-headers and high flow h-pipes for the 4.6L. For more information about these and other quality performance products from JBA visit us online at [www.jbaheaders.com](http://www.jbaheaders.com)



JBA Long tube headers  
p/n 6675S



### JBA Equipped - Fastest 4.6L 3v Mustang

Sutton High Performance - 2005 Mustang 4.6L - Vortech supercharger  
Horsepower - 665rwhp • 1/4 Mile - 9.82 @ 136 mph



### JBA Equipped - Falken Tire Drift Mustang