



**AMERICAN
THUNDER**

409S Stainless Steel

Installation Instructions for:
SYSTEM #817709
2014-2017 RAM 2500 SERIES TRUCK
6.4L HEMI ENGINE
CREW CAB AND MEGA MODELS ONLY
DOES NOT FIT WITH FACTORY AIR-BAGS

10/10/16



1) Raise the vehicle up on a hoist or rack to working height. If you do not have access to a hoist or rack, raise the vehicle and support securely with jack stands.



2) To make the removal of the stock system easier, using a hacksaw or sawsall, cut the stock tailpipe off where it exits the muffler. Remove the hanger at the rear of the tailpipe from the rubber mount on the vehicle and set the tailpipe aside. This step is not mandatory, but makes removal easier. There are retainer clips on the ends of each of the hangers that will need to be removed with pliers to allow disassembly.



3) Support the muffler with a stand and remove the two hangers at the rear of the muffler along with the hangers in front of the muffler from the rubber mounts on the vehicle. Then, remove the clamp on the slip connection just behind the catalytic converter. **After removing the clamp, this connection will have to be either sliced or heated in order to separate the connection.** Remove the muffler and set aside.



4) Place a provided 3 ½" clamp over the expanded end of inlet pipe **#36061S**, then place onto the stock front pipe just behind the catalytic converter. Be sure to line up the notch in the pipe with the tab on the front pipe. Connect the hanger on the pipe to the rubber mount on the vehicle and tighten the clamp enough to hold but still allow for adjustment.



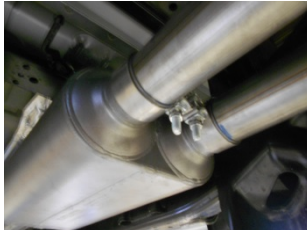
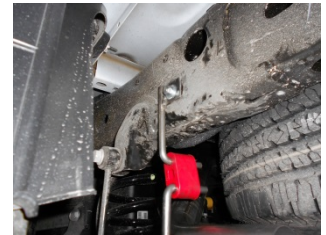
5) **For Crew Cab - 6'-4" bed models** place a provided 3 ½" clamp onto the expanded end of extension pipe **36062S**, place onto the back of the inlet pipe and connect the hanger on the pipe to the rubber mount on the vehicle. Tighten the clamp enough to hold but still allow for adjustment.



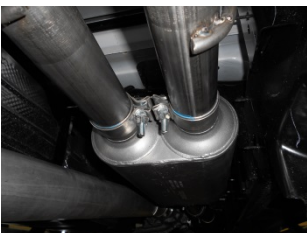
6) **For Crew Cab - 8' bed models** place a provided 3 ½" clamp onto the expanded end of extension pipe **#36063S**, place onto the back of the inlet pipe and connect the hangers on the pipe to the rubber mounts on the vehicle. **For Mega Cab – 6'-4" bed models**, trim 9.00" from the back of pipe **#36063S**, this will remove the rear hanger but it is not required. Remove any burrs on the pipe after trimming and place onto the back of the inlet pipe and connect the hanger.

7) Place a provided 3 ½" clamp onto the muffler inlet, slide the muffler onto the back of the extension pipe and support the muffler with a stand. Tighten the clamp enough to hold but still allow for adjustment.

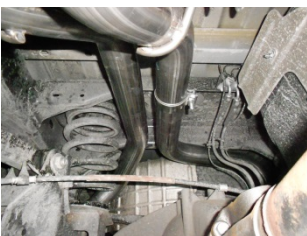
8) At the rear of the frame on the drivers side of the vehicle there is a rectangular hole in the outside of the frame. Using this hole, connect frame hanger **#474HA** to the outside of the frame using the **#475HA** as a backing plate on the inside of the frame, secure with the nut and washers provided. Make sure the hanger is straight up and down, and then tighten securely. Place rubber hanger **#HA168** onto the bottom of frame hanger **#474HA**.



9) Install a provided 3" clamp onto the right muffler outlet. Place the right side tailpipe **#26465S** into position over the axle and slip into the right side muffler outlet, while at the same time, connecting the hangers at the front and rear of the pipe to the rubber mounts on the vehicle. Tighten the clamp enough to hold, but still allow for adjustment.



10) Install a provided 3" clamp onto the left muffler outlet. Place the front section of the left side tailpipe **#26466S** into the left side muffler outlet and connect the hanger on the pipe to the rubber mount on the vehicle. Tighten the clamp enough to hold, but still allow for adjustment. Place a second 3" onto the back of this pipe in preparation for the next step.



11) Connect the rear section of the left side tailpipe **#26467S** onto the back of the front section by sliding the two sections together at the slip-fit connection over the rear axle. Place the hanger at the rear of the tailpipe into the rubber mount installed in Step 7 above. Tighten the clamp enough to hold, but still allow for adjustment.

11) Slide either the side exit pipe **#26468S** or the rear exit pipe **#26469S** onto the ends of both over-axle pipes. **Note:** For Crew Cab - 6'-4" bed model trucks, 2.00" must be trimmed from the back of rear exit pipes **#26469S**. Place a 3" clamp onto these slip-fit connections. Tighten enough to hold, but still allow for adjustment. Place the two stainless tips **#ST462** onto the exit pipes and tighten the clamps enough to hold, but still allow for adjustment. Rotate the exit pipe and tip to the desired distance from the fender or bumper and so angle cut on tips are in the desired location.

Adjust the position of all pipes and muffler to provide a satisfactory fit. A minimum 3/4" clearance around all parts of the system must be maintained; while also keeping suspension travel and vibration in mind.

Tighten all clamped connections down securely. Slide the 7/16" hanger keepers onto the end of the hangers at the rear of the vehicle on the driver's side to prevent the hangers from slipping out of the rubber mounts. Also, use the two included zip-ties to tie back the rear end breather tube and other cables out of the way to provide clearance for the left side tailpipe, be sure to leave enough slack for suspension travel.

For a more secure installation, we recommend welding all slip-fit connections.

PACKING LIST

<u>Qty</u>	<u>Description</u>	<u>Part#</u>
1	Inlet Pipe	36061S
1	149.5" Extension	36062S
1	169.5"/160.5" Extension	36063S
1	Muffler	8535582-Z
1	Right Tailpipe	26465S
1	Left Tailpipe, Front Section	26466S
1	Left Tailpipe, Rear Section	26467S
2	Side Exit Pipe (R/L)	26468S
2	Rear Exit Pipes (R/L)	26469S
2	Stainless Tip	ST462
1	Parts kit	PK777
1	Frame Hanger	474HA
1	Back up plate w/bolt	475HA
1	Rubber hanger	HA168
3	3 1/2" clamp	MC350BS
5	3" clamp	MC300BS
1	3/8" Nut	HW103
1	3/8" Flat Washer	HW303
1	3/8" lock washer	HW309
1	7/16" Hanger Keepers	HW502
1	1/2" Hanger Keepers	HW503
2	15" Zip-tie	HW505



**AMERICAN
THUNDER**

409S Stainless Steel

Installation diagram for:

SYSTEM #817709

2014-2017 RAM 2500 SERIES TRUCK

6.4L HEMI

CREW CAB AND MEGA CAB MODELS ONLY
DOES NOT FIT WITH FACTORY AIR-BAGS

