



Installation Instructions

Delta Boost Module

Fits: 2010-2014 Ford 3.5L EcoBoost engines

Catalog # 18104

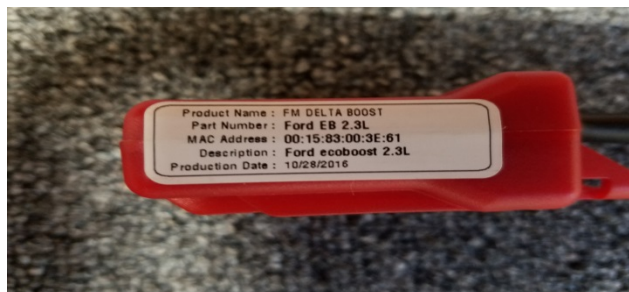
Congratulations for being selective enough to use Flowmaster Delta Boost Performance Tuner. We have spent many hours developing this kit to ensure that you will receive maximum performance and durability with minimum difficulty in installation. Please take the time to read these instructions and call us if you have any difficulties during the installation.

CAUTION: Make sure ignition is **OFF** and cooled down before attempting installation.

This Flowmaster Delta boost Tuner is intended for all 2010-2014 Ford vehicle models equipped with a 3.5L EcoBoost engine. Please note that the proper sensor location may vary between different vehicle models that may not be addressed below. In all instances, the pressure sensor will be located between the throttle body and the intercooler. Do not confuse it with the MAP sensor which is located in the manifold on the engine side of the throttle body.

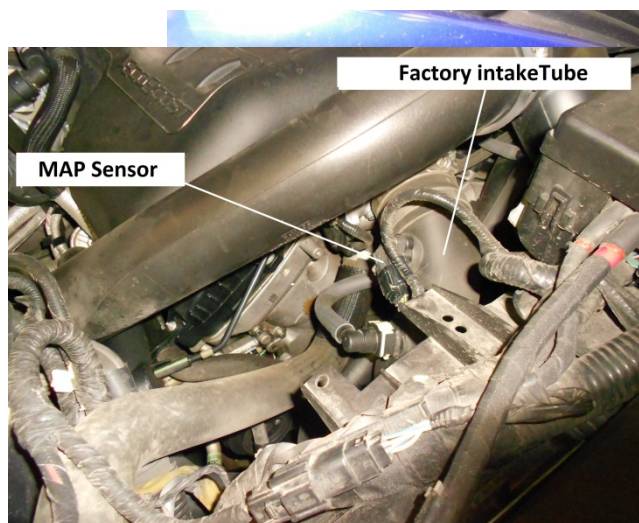
Installation of this unit can be accomplished in a matter of minutes by anyone with minimal mechanical experience.

1. The Delta Boost module is identified with a MAC address. The address can be found on the sticker on the side of the unit. Please note this address. It will be needed by the smart phone app to establish a connection.

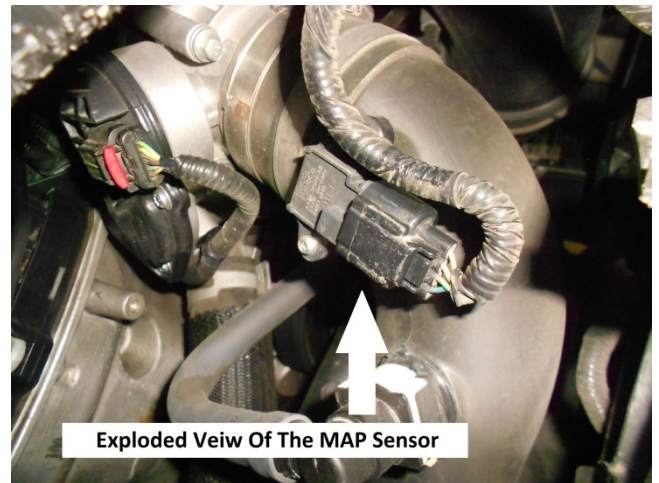


F-150 APPLICATIONS

2. Locate the MAP sensor on the intake tube, which is located on the driver's side of the engine compartment.



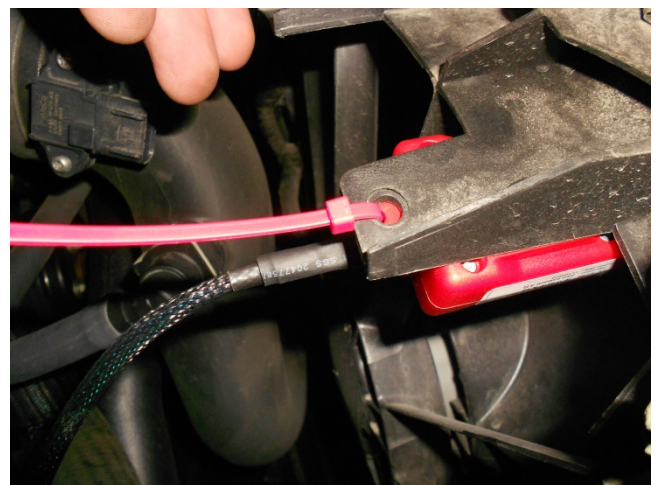
3. ****Close up view of the MAP sensor****



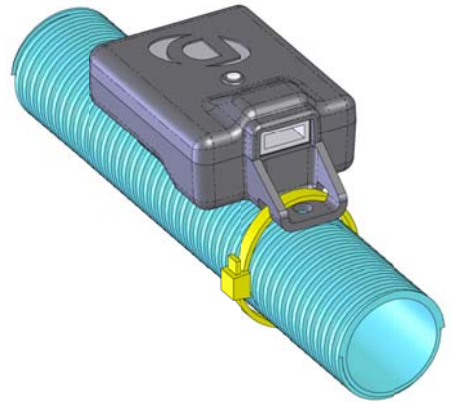
4. Carefully unplug the sensor. There is a locking tab located at the top of the sensor, squeeze the tab and pull the plug to remove.



5. Mount your Delta Boost module to a secure location. We located a factory hole on the radiator shroud and with the supplied tie strap, secured it down.



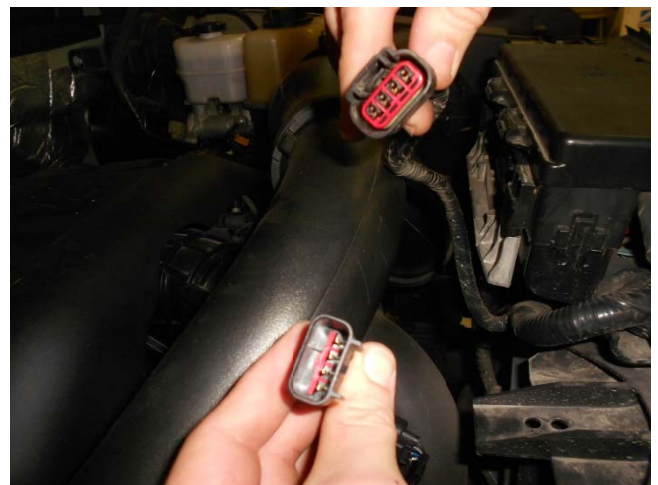
6. The module is to be secured using the included zip-tie. Please note -- DO NOT route the zip-tie over the harness at the module, as this could stress the internal circuit board and damage the module! Only insert a zip-tie thru the slots on the module as shown



7. Connect the female connector on the Delta Boost module to the factory male sensor.



8. Connect the male connector on the Delta Boost module to the factory female connector on the wiring harness.



9. Turn on the ignition, but do not start the engine. The LED on the module will illuminate.

10. The module has 4 settings -- in order of increasing performance, they are: VALET (-4 psi), STANDARD (+0 psi), SPORT (+3 psi), and MAX (+4 psi).

NOTE: Flowmaster recommends the use of 91 octane or higher fuel for use in MAX setting.

11. Download with your Android or Apple device the Flowmaster Delta Boost app. Note that your device must be equipped with Bluetooth version 4.0.

12. Adjust module for the desired level of performance. Your setting will be retained, so adjustment is not necessary at each engine start.

NOTE: The modules are shipped in SPORT mode. The setting can be changed with the Flowmaster app.

Android Users: Click <https://play.google.com/store/apps> to download the Flowmaster Delta boost app from the Google Play store. You can also search "Flowmaster" on the Google Play store to locate the app.

iOS users: Access the Apple App store and search for the Flowmaster Delta Boost app.

IMPORTANT: RETAIN THESE INSTRUCTIONS FOR FUTURE REFERENCE

Technical Service

A highly trained technical service department is maintained by Flowmaster to answer your technical questions, provide additional product information and offer various recommendations.

Technical service calls, correspondence, and warranty questions should be directed to:



Flowmaster, Inc

(707) 544-4761

www.flowmastermufflers.com