

VHX-55C

Dakota Digital VHX Instrument Installation
For '55 and '56 Chevy car systems, both automatic and manual bezels

Your new VHX-55C kit should include:

VHX Display



Block Off Lens



Universal Sensor Pack



Switch Assembly

Installation Manuals



CAT5 Cable

8-32x1.25" Mounting Screws and Lock Washers



Control Box

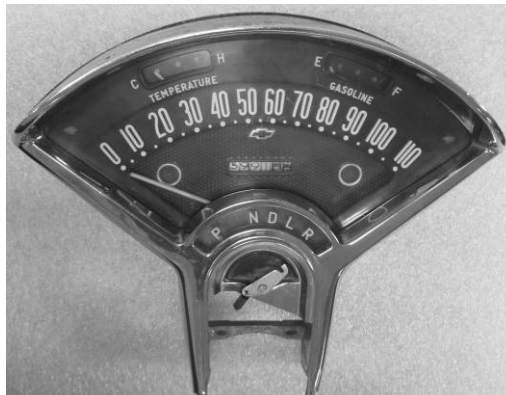


Foam Tape

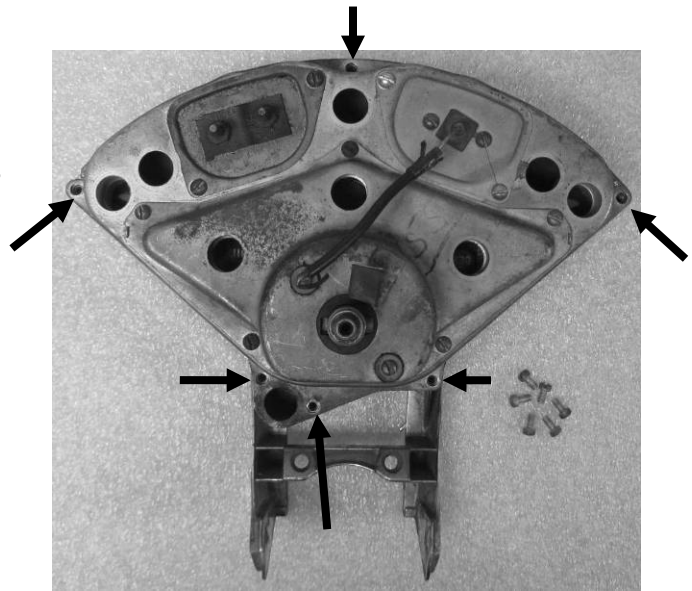
Installation

If you are reusing a stock bezel start at step 1; if you have a new or remanufactured bezel jump to step 5.

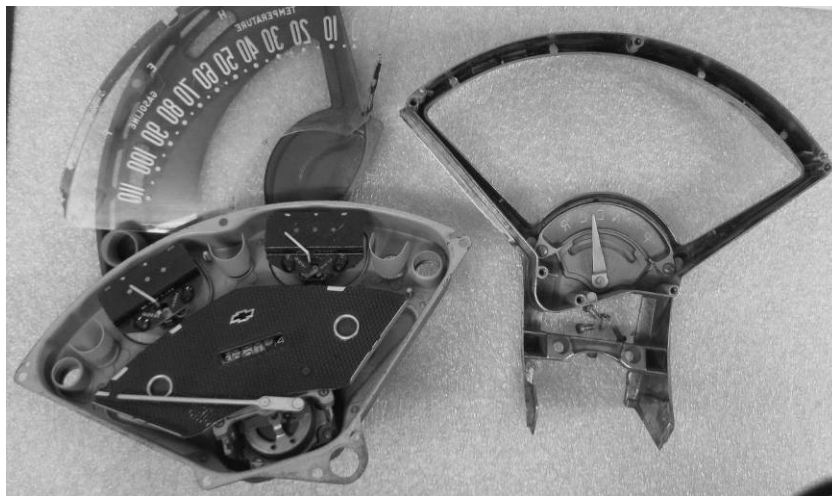
1. Remove the stock instrument cluster from the car.



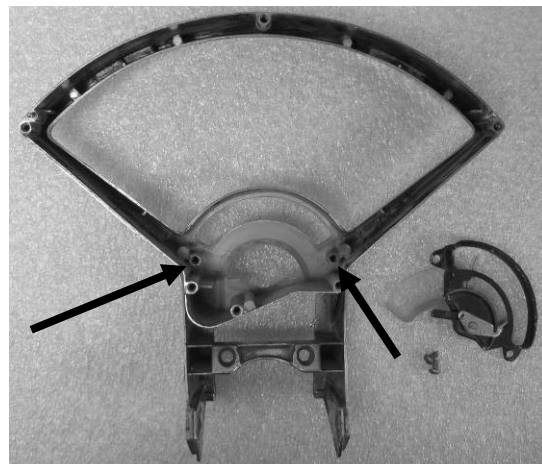
2. Remove the six screws holding the gauges to the bezel on the back of the system.



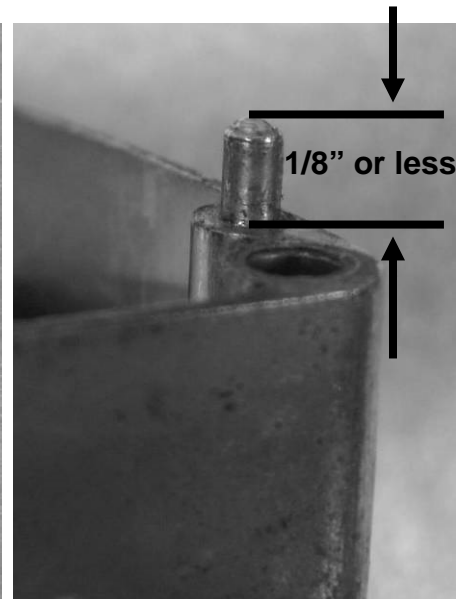
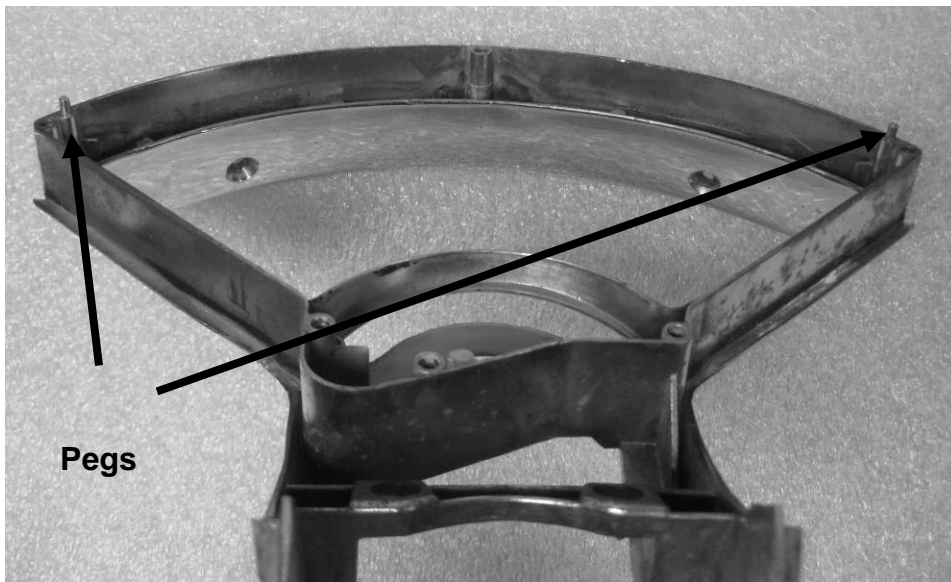
3. Remove the stock gauges, separator plate, and lens from the bezel.



4. For automatic applications, remove the gear position indicator and lens by removing the two screws holding it to the bezel.



5. For some bezels you will have to grind down the two alignment pegs at the top of the bezel. They must be less than 1/8" tall or the system will not sit flush against the bezel. A grinder or file will work to knock them down a bit.

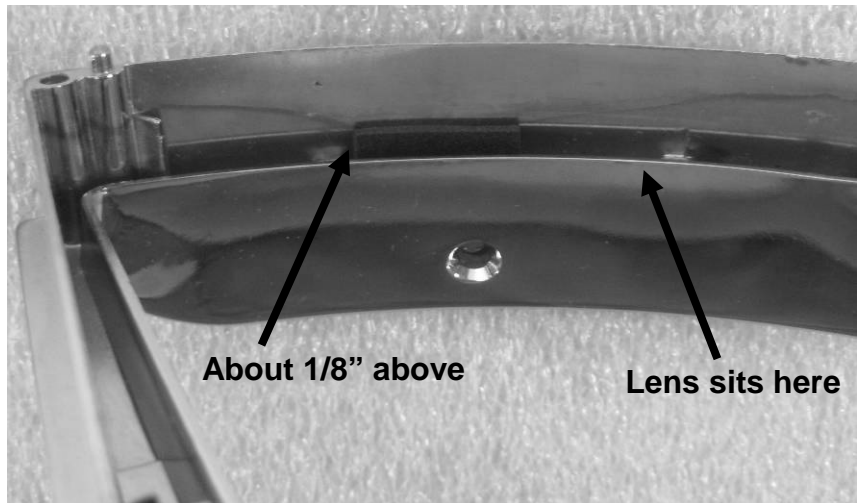
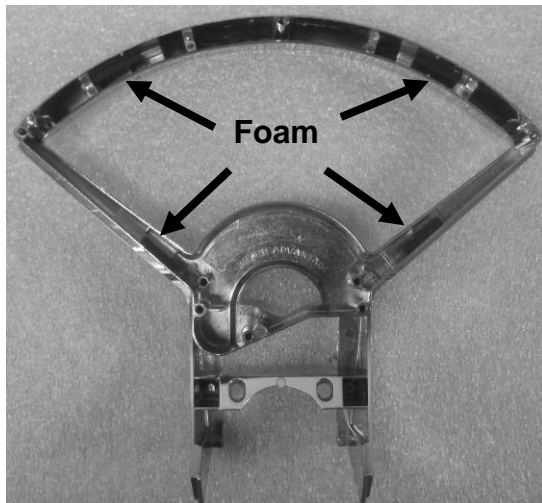


6. Now is a good time to clean the bezel before installing the VHX system. Remove any old lens material or gasket from the bezel.
7. If you have an automatic bezel, you will have to attach the provided block off plate with silicone or hot glue as the stock gear position indicator will not fit with the VHX system. You can purchase a separate gear position decoder, GSS-2000, from Dakota Digital that will allow the gear position to display directly on the VHX system. (photos on next page)



*** Allow the glue to dry before continuing with the installation.

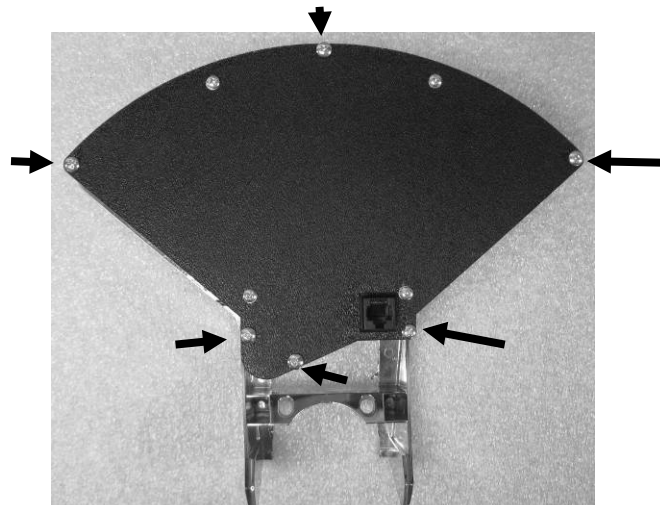
8. Next, cut the supplied foam into four small pieces, approx 1" long, and install four foam blocks into the bezel to help prevent any rattles of the lens and bezel. The foam should sit down in the bezel and adhere to the outer edge, sticking up about 1/8" so it will compress against the lens once the system is installed.



Remove the protective tape from the clear lens and install the VHX system into the bezel. Watch carefully as you insert the system so you don't scratch or damage the lens. The VHX system should align tightly with the bezel and the lens should fit flush with the bezel.



9. Secure the VHX system to the bezel with the six 8-32 x 1.25" screws and lock washers provided.



10. Re-install the cluster into the car and refer to the main manual for wiring instructions to complete the VHX installation.



⚠ WARNING: This product can expose you to chemicals including lead, which is known to the State of California to cause cancer and birth defects or other reproductive harm. For more information go to www.P65Warnings.ca.gov



4510 W. 61st St. North
Sioux Falls, SD 57107
www.dakotadigital.com

dakotasupport@dakotadigital.com Copyright 2011 - Dakota Digital, Inc.

Phone (605) 332-6513
Fax (605) 339-4106