

# INSTRUCTIONS

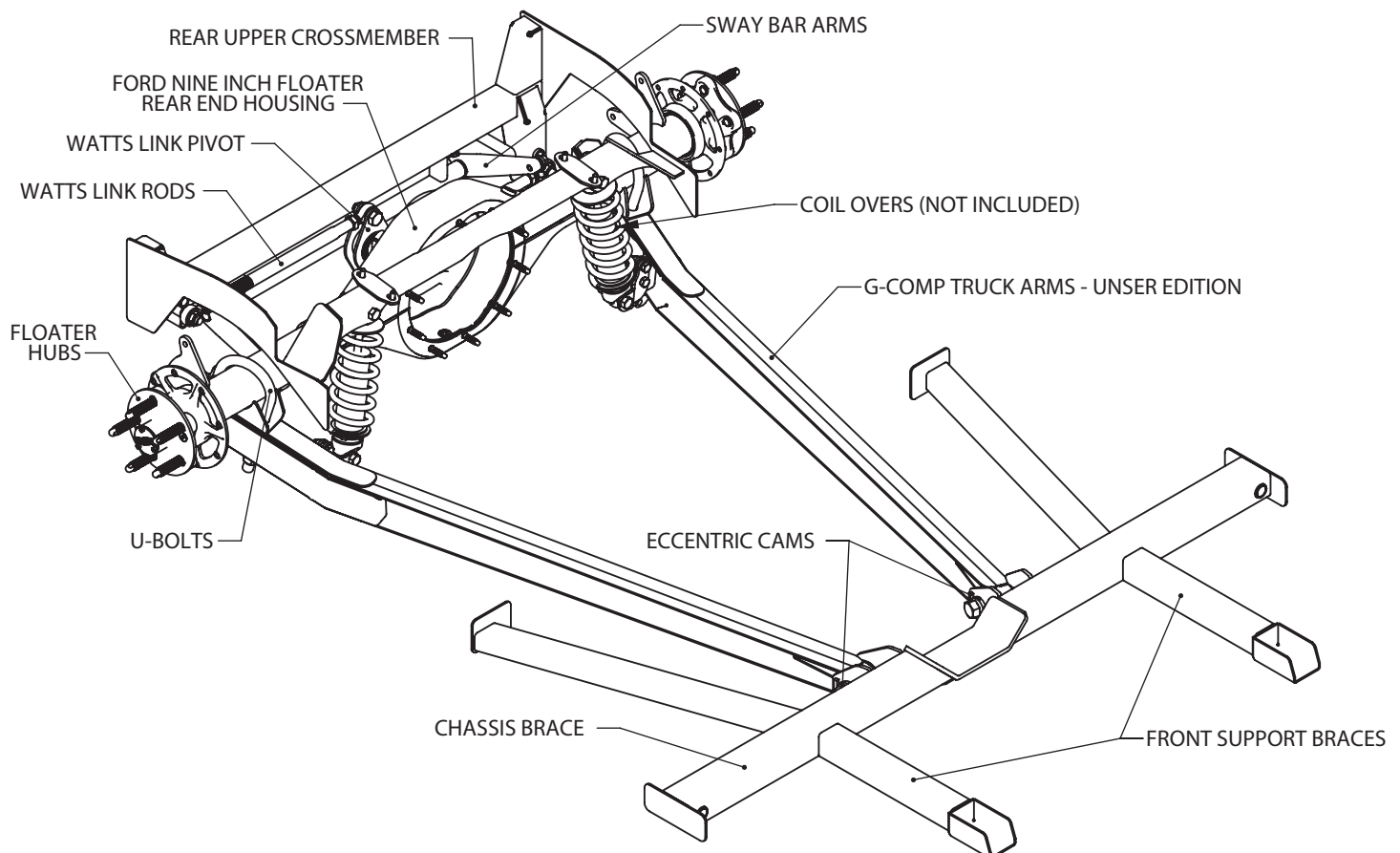
© 2019, Speedway Motors, Inc.

**SPEEDWAY**  
motors®

## 350-400

Unser Rear Suspension  
62-67 Chevv Nova

Kit Contents	
350003.1	G-Comp Chassis Brace
350003.2	G-Comp Front Support
350400.1	Chevy II Unser Rear Arms (pair)
350021.1	G-Comp Upper Crossmember
350009	G-Comp 54" Floater Rear Housing
350029.2	Floater Components
65579031-25.5	25.5" Double Splined Axle - 31
65579031-30	30" Double Splined Axle - 31
350800.4	Hardware Kit - Unser Rear
350029	G-Comp Rear Watts Link Package
350402	G-Comp Rear Sway Bar - Nova



# INSTRUCTIONS

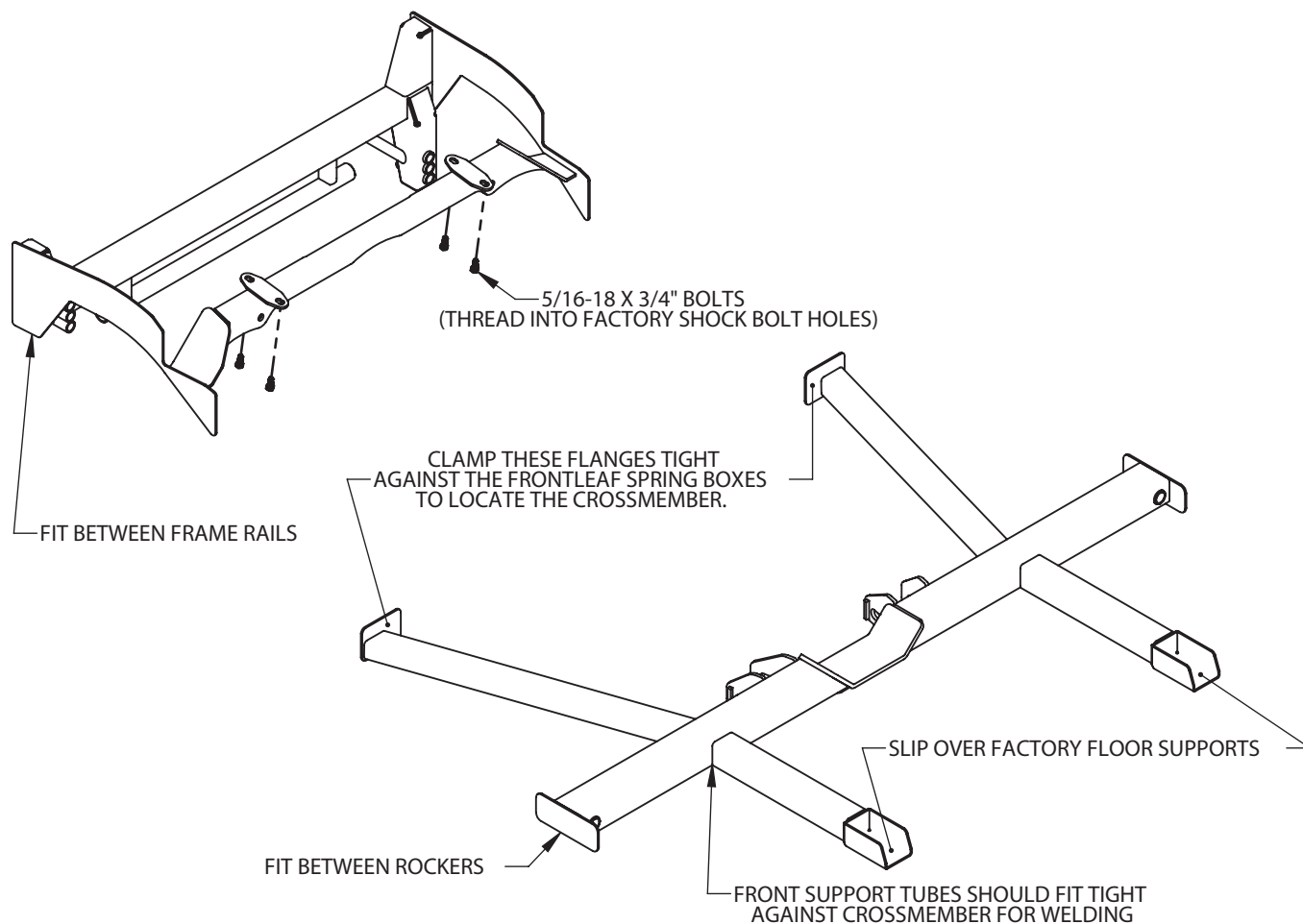
© 2019, Speedway Motors, Inc.

**SPEEDWAY**  
motors®

## 350-400

Unser Rear Suspension  
62-67 Chevv Nova

- 1. Remove Rear Suspension:** Raise the car and support it with jack stands or a lift. Remove the exhaust, drive shaft, rear end, and all rear suspension components including the rubber bump stops. Disconnect fuel lines and remove fuel tank. Remove fuel lines, brake lines, and E-brake cables from bottom of car. These can be re-routed through the holes in the chassis brace after installation.
- 2. Prep for Welding** by raising the chassis brace into its approximate position and mark all areas that will be welded. These areas should be ground down to bare metal to provide the proper conditions for welding. (Any carpet or padding installed on back side of weld areas should be removed at this time.) To position the chassis brace, the rear flanges of the chassis brace should be clamped tight against the leaf spring boxes while the chassis brace is pushed up against the bottom of the car and centered left to right.



- 3. Repeat step two** with the rear cross member and front supports. Depending on the car, minor trimming/fitting may be required. Bolt the upper rear crossmember to the car using the four supplied 5/16"-18 x 3/4" bolts. These bolts will go into the factory shock bolt holes. This will locate the crossmember in the proper location.

# INSTRUCTIONS

© 2019, Speedway Motors, Inc.

**SPEEDWAY**  
motors®

## 350-400

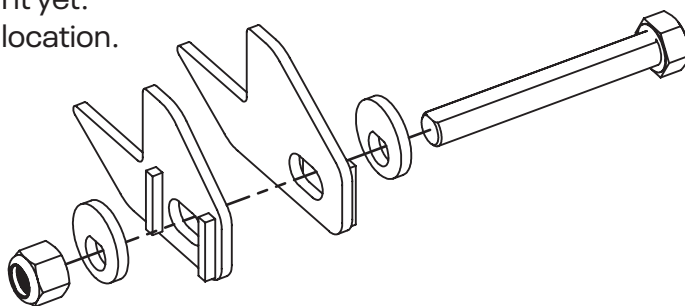
Unser Rear Suspension  
62-67 Chevr Nova

**4. Tack-Weld Crossmembers:** Once all areas that will be welded are prepped and cleaned, then the cross member, chassis brace, and front supports can be tack welded into place. (Some grinding and trimming may be necessary to provide proper fit up.) **Note:** Do not fully weld the crossmembers at this time! Only weld enough to securely hold the parts in place during mock up. Hint: Weld in places that can be easily accessed with a grinder in case it becomes necessary to move or adjust the parts.

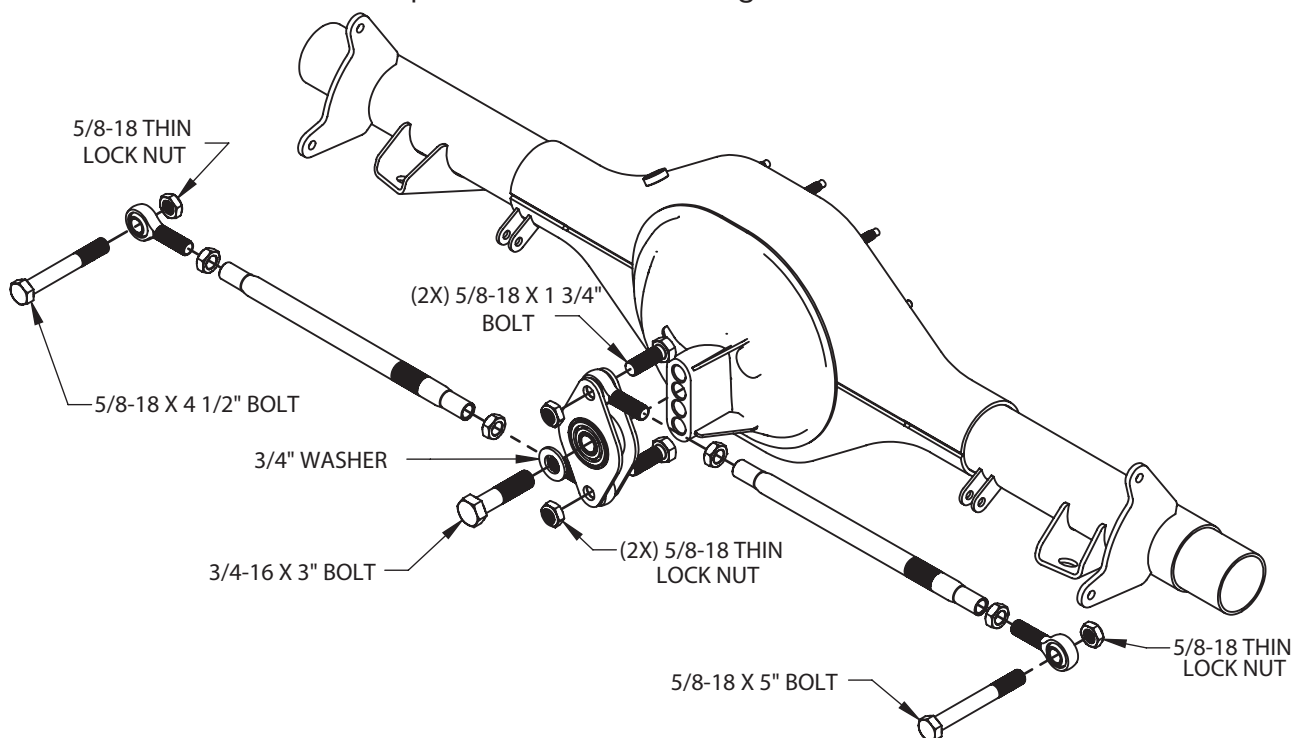
**5. Assemble Truck Arms and Rear End Housing:** Install the truck arms onto the front cross member using the supplied  $\frac{3}{4}$ "-16 X  $5\frac{1}{2}$ " cam bolts and spacers. **Note:** Install the cam bolts in the center of adjustment as shown. The flat side of the bolt should be facing upwards. Tighten the nut until it just touches the cam spacer, but do not fully tighten it yet.

Raise the rear end housing into its approximate location.

Using the supplied U-bolts and nuts, attach the truck arms to the rear end housing. The U-bolts only need to be snug at this time. There is no need to fully tighten them yet. With the rear end housing connected to the truck arms, and raised up to ride height, you can now tighten the cam bolts.



**6. Install the Watts Link Pivot:** Once the truck arms have been connected to the rear end housing, it's time to mock up the watts link. Start by installing the center pivot to the rear end housing. Use the supplied  $\frac{3}{4}$ -16 x 3" bolt and washer to attach the pivot to the housing as shown. For initial mock up, use the second hole from the top on the rear end housing.



# INSTRUCTIONS

© 2019, Speedway Motors, Inc.



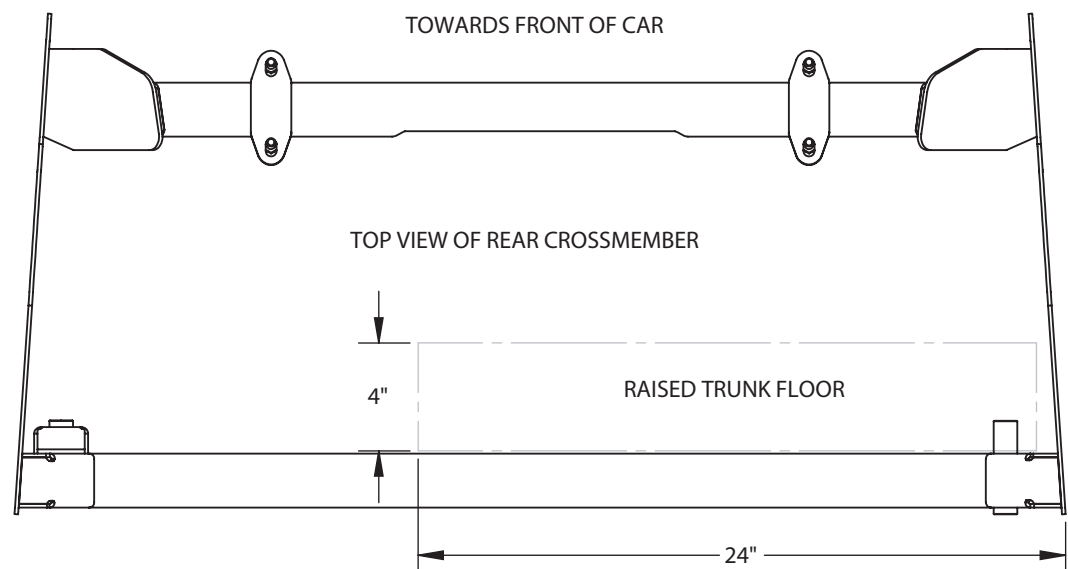
## 350-400

Unser Rear Suspension  
62-67 Chevv Nova

**7. Install the Link Rods:** Start by assembling the link rods. Install the lower/drivers side link rod first. Install one end of the link into the lower location on the pivot using the 5/8-18 x 1 3/4" bolt and lock nut. Install the other end of the link to the chassis. Use the center hole location and a 5/8-18 x 4-1/2" bolt and lock nut. Once the link is installed, adjust the length of the link by spinning the tube until the pivot is at a 90° angle with the ground. Note: The link should be level with the ground at this time. The rear end housing may need to be raised or lowered to achieve this. Once the link is level with the ground, and the pivot is at a 90° angle, the jam nuts can be tightened. With the first link installed, it is now time to install the upper/passenger side link. Start by using the 5/8-18 x 1 3/4" bolt and lock nut to connect one end of the link to the center pivot. Now, hold the link up in its approximate position and adjust the link until the outer rod end lines up with the center hole location on the chassis. Use the 5/8-18 x 5" bolt and lock nut to connect the link to the chassis. Now you can tighten the jam nuts on this link. Be sure to keep the rod ends adjusted evenly on either side of the tube. Note: The center pivot bolts must be installed as shown, with the nut towards the rear of the car. Installing them in the other direction may result in interference between the bolt and the rear end housing. With the links adjusted properly and the rear end at ride height, both links should be parallel to the ground and the pivot should be at a 90° angle.

**8. Check Alignment and Clearances:** On most cars, a portion of the trunk floor will need to be raised to clear the center pivot and upper link at full compression. The affected area is the passenger side trunk floor just in front of the fuel tank (shown below). **Note:** It is a good idea to leave room to clear the pivot and link rod even in the upper most position.

Cycle the suspension completely though its travel and check for any clearance issues with the truck, floor, etc...



**9. Weld:** If there are no clearance issues, it is time to fully weld in the crossmembers. Start by removing the rear end, watts link, and truck arms from the car. Take note which link rod goes on which side. Fully weld the cross member, chassis brace, and front supports to the car. **Note:** It is a good idea to only weld a small bead at a time, then move to a new area and allow the first area to cool completely before welding further in that area. This will greatly reduce the risk of warping.

# INSTRUCTIONS

© 2019, Speedway Motors, Inc.

**SPEEDWAY**  
motors®

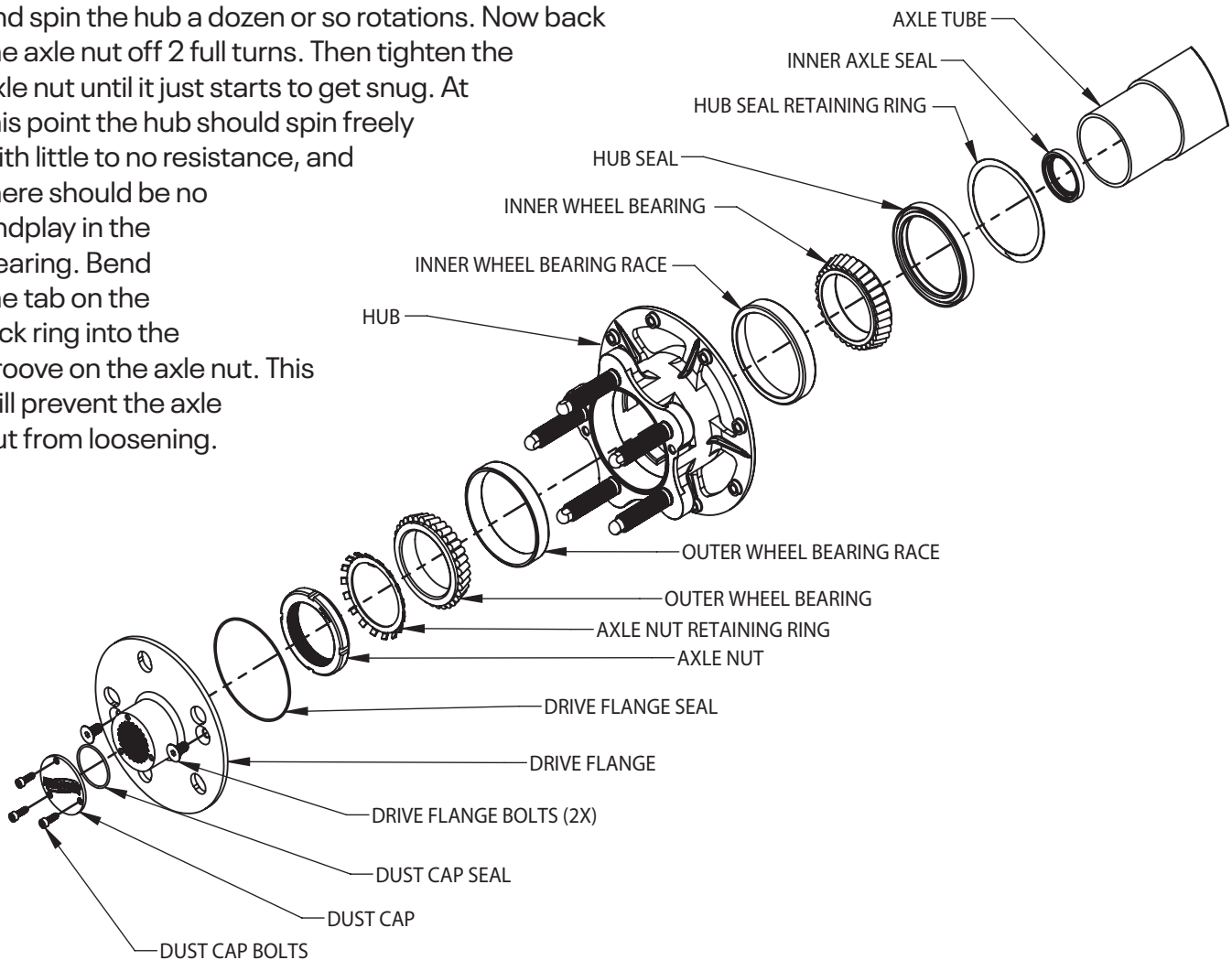
## 350-400

Unser Rear Suspension  
62-67 Chev Nova

**10.** Final-Assembly: Once all of the welding is complete, the suspension can be assembled.

**11.** Now is a good time to fully assemble the rear end by installing gears, hubs, axles, and brakes.

**Note:** This can also be done after installing the housing into the car. Assemble the hub as shown below. Be sure to pack the wheel bearings with high quality grease. Do not over torque the axle nut! The hub should spin freely with zero endplay. To achieve this, assemble the hub as shown. Tighten the axle nut and spin the hub a dozen or so rotations. Now back the axle nut off 2 full turns. Then tighten the axle nut until it just starts to get snug. At this point the hub should spin freely with little to no resistance, and there should be no endplay in the bearing. Bend the tab on the lock ring into the groove on the axle nut. This will prevent the axle nut from loosening.



**12.** Secure the truck arms to the chassis brace using the cam bolts and cam spacers as shown in step 5.

**13.** Raise the complete rear end into position. Attach the rear end to the truck arms using the supplied u-bolts, washers, and nuts.

**14.** Install the Watts link center pivot as described in step 6.

# INSTRUCTIONS

© 2019, Speedway Motors, Inc.

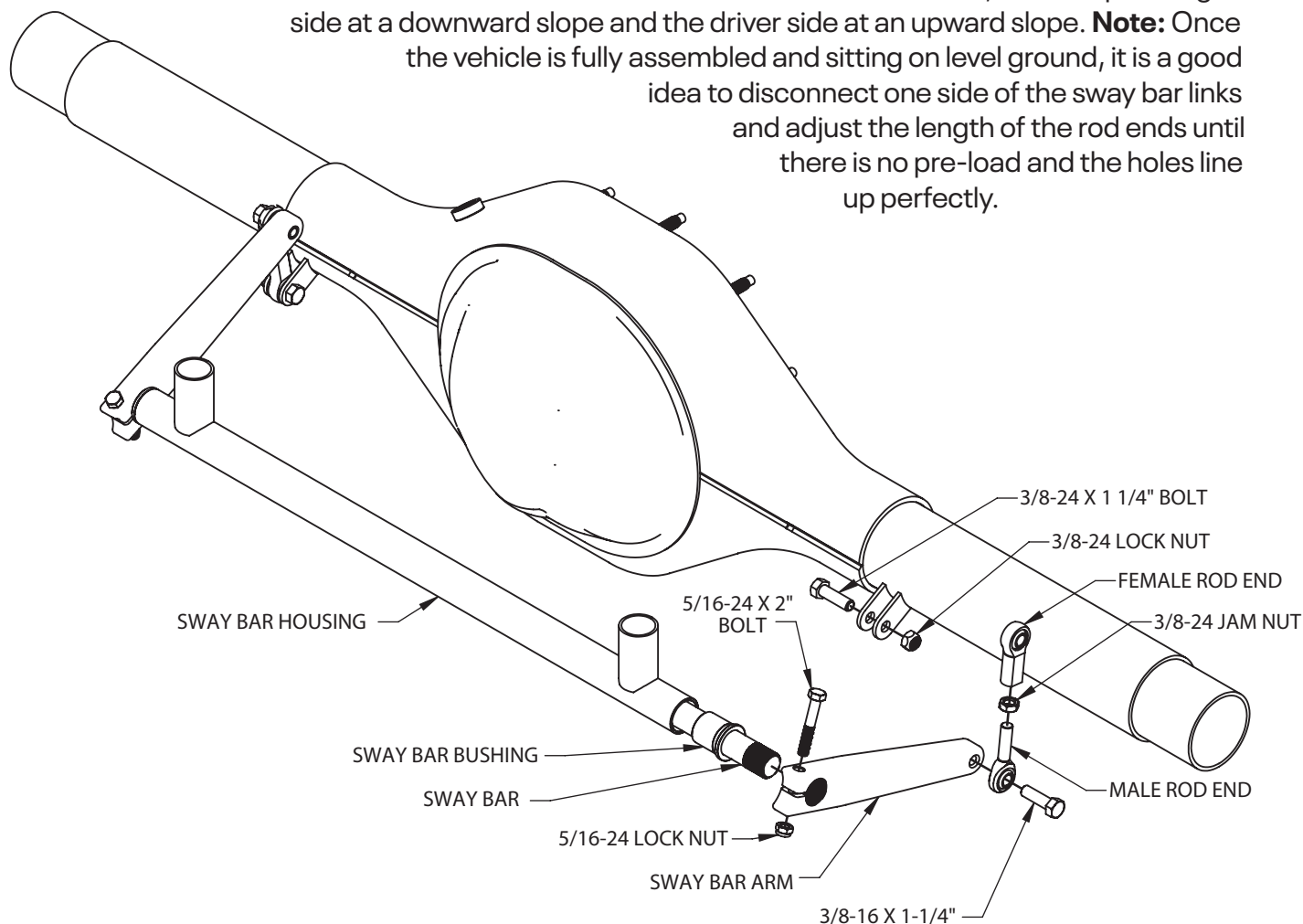
**SPEEDWAY**  
motors®

## 350-400

Unser Rear Suspension  
62-67 Chev Nova

**15.** Install the link rods back into their previous locations and tighten.

**16.** Install the sway bar as shown. Press the sway bar bushings into the sway bar housing on the crossmember by lightly tapping them into place with a rubber mallet (be sure the bushings are going in straight). With the bushings in place, slide the sway bar into the housing. Slide one of the torsion arms onto the splined portion of the sway bar so it sits flush with the end of the bar. Install the 5/16-24 x 2" bolt and lock nut onto the arm and tighten. Install one of the male rod ends onto the outside of the arm using a 3/8-16 x 1-1/4" bolt. Now thread the jam nut and female rod end onto the male rod end leaving roughly 1/4" of threads showing. Attach the female rod end to the rearend housing using 3/8-24 x 1-1/4" bolt and lock nut. Assemble the opposite side in the same manner. The arms will need to be "clocked" about 45° relative to one another, with the passenger side at a downward slope and the driver side at an upward slope. **Note:** Once the vehicle is fully assembled and sitting on level ground, it is a good idea to disconnect one side of the sway bar links and adjust the length of the rod ends until there is no pre-load and the holes line up perfectly.



**17.** Install the brakes as per the instructions included with your brake kit. **Note:** For recommended part numbers please visit our website or contact one of our tech experts.



# INSTRUCTIONS

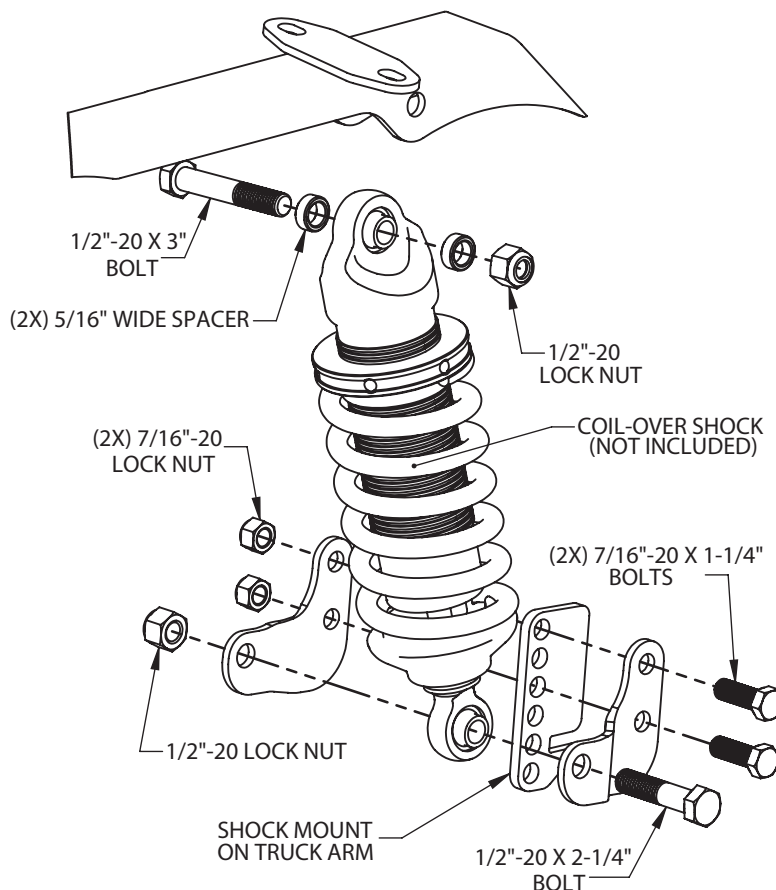
© 2019, Speedway Motors, Inc.

**SPEEDWAY**  
motors®

## 350-400

Unser Rear Suspension  
62-67 Chev Nova

**18.** Install the coil-over shocks. The Unser Edition G-Comp rear suspension features an adjustable lower shock mount. To install the shock, first use the two 7/16"-20 x 1-1/4" bolts and lock nuts to install the shock brackets to the shock mount on the truck arm. Then use a 1/2"-20 x 2-1/4" bolt and lock nut to secure the lower end of the shock to the truck arm as shown. The remaining 1/2"-20 x 3" bolts and lock nuts are used along with two 5/16" spacers to install the top of the shocks into the rear crossmember. **Note:** This kit is designed to use 4" stroke shocks with a compressed length of 10"-11" and an extended length of 14"-15". Shock ends should be 1/2" bearings with a mounting width of 1". For recommended part numbers, please visit our website or contact one of our tech experts.



**19.** Re-install the drive shaft, fuel tank, fuel lines, brake lines, exhaust, etc... Bleed the brakes. Fill the rear end with fluid. Install wheels and tires.

## 20. Alignment:

Lower the car onto the ground and check for desired ride height. Adjust ride height if necessary by raising the car and spinning the adjusting collar on the coil-over. Once the ride height has been set, lower the car onto the ground and make sure the rear end is centered in the car body. Adjust the watts link rods if necessary. For optimum handling and performance, both rods should be parallel with the ground and the center pivot should be at a 90° angle. This kit provides multiple mounting locations for the watts link to allow for different ride heights. Now that the ride height is set and the rear end is centered perfectly in the car, the rear end can be aligned by adjusting the cam bolts on the front of the truck arms. **Note:** This is difficult to do accurately and a professional alignment is recommended. This method will get you close enough to drive the car to an alignment shop.

# IMPORTANT

**DISCLAIMER** In an effort to offer our customers low prices, quick service and great value, Speedway Motors reserves the right to change suppliers, specifications, colors, prices, materials without notice. Prices and policies that were current and in effect at the time of printing are also subject to change without notice. Quantities are limited on some items. Any unauthorized use of this catalog including words, photos or drawings is prohibited. Speedway is not responsible for any typographical errors, printing errors or misinterpretations.

**WARRANTY DISCLAIMER** Purchasers understand and recognize that racing parts, specialized street rod equipment, and all other parts and services sold by Speedway Motors, Inc. are exposed to many and varied conditions due to the manner in which they are installed and used. Except for certain limited warranties, if any, set forth in Speedway Motors, Inc.'s current catalog with respect to the products and/or parts thereof identified on your invoice, each product, and each part thereof, is sold "as is", and "with all faults" and Speedway Motors, Inc. makes no warranties either expressed or implied, written or oral, with regard such products and services including, without limitation, any warranty of merchantability or fitness for a particular purpose. Without limiting the foregoing, there is no warranty expressed or implied as to whether the goods sold hereby will protect purchasers or ultimate end-users of such products and parts from injury or death. In no event shall Speedway Motors, Inc. be liable for any special, incidental or consequential damages, or any other damages whatsoever arising out of or connected with the use or misuse of the products and each part thereof. Purchasers acknowledge and agree that no person, entity or agent of Speedway Motors, Inc. has any authority to make any statement contrary to this disclaimer and that any warranty statements or representations allegedly made on behalf of Speedway Motors, Inc. by any such person, entity or agent are void. Purchasers are relying solely on their own skill and judgment to select, purchase and use suitable products and assume all responsibility and risk with regard thereto. Some local laws prohibit the use of utility jugs, funnels and barrel pumps for dispensing fuel. Please check your own state for more information, regulations or further direction in your use of the utility jugs, funnels and barrel pump described in Speedway's catalogs or on Speedway Motors websites. Some parts in this catalog are not legal for sale or use in California. Items sold in this catalog are for racing vehicles which may never be used on a highway. The use of manufacturer's names and symbols are for reference purposes only.

**DAMAGE CLAIMS** Please inspect all packages upon delivery and in the presence of the delivery driver when possible. The driver must note any visible damage and provide procedures for handling damage claims. To allow for a claims process, please retain original box, packing material and damaged merchandise. Contact Speedway Motors for instructions regarding damage claim within 5 days of receipt. Speedway Motors assumes no liability after this period.

**SHORTAGES** Please check the contents of your delivery to ensure that all parts ordered are received. Refer to your invoice to cross check all items received and inspect all packing materials for contents of small items. Retain original shipping box and packing materials. Orders may be split into multiple boxes which can be delivered on different days. Contact Speedway Motors for instructions regarding shortage claim within 5 days of receipt. Speedway Motors assumes no liability after this 5 day period.

**REFUSALS** All refused packages will be billed the freight to and from the destination and refused COD orders will be billed a 15% restocking charge plus freight to and from destination.

**WARRANTY CLAIMS** If the item is used or installed and a warranty claim request is submitted, warranty work is done by the manufacturer and may take up to 30 days for processing. Speedway Motors will be required to follow the manufacturer's warranty instructions to allow for a credit refund or exchange when specified.

Find the above info on our website:

**SpeedwayMotors.com/Info/FAQ**

**RETURNS** We want you to be satisfied with your purchase. If you are not satisfied, you may return your new, unused item within 60 days for refund or exchange.

All exchanged or returned merchandise must be in original factory condition with no modifications or alterations. Returned merchandise must include original packaging materials, warranty cards, manuals, instructions, etc. If the returned item requires repackaging, your refund / exchange will be subject to a repackaging charge. Return/Exchange transactions less than \$99 are excluded from the free shipping offer.

**HOW TO RETURN AN ITEM** Please re-pack the item in a sturdy box, include a copy of your invoice and completed return form. Returns must be shipped prepaid. CODs are not accepted. Shipping costs for exchanged merchandise will be charged to your credit card.

Items that are returned after 60 days are subject to a 15% restocking charges. Fiberglass items returned will be subject to a 15% restocking charge. We are unable to accept returns on electrical parts, video tapes, DVD's, books, special order or closeout merchandise.

**BRAKE INSTALLATION ALERT** The selection and installation of brake components should only be done by personnel experienced in the proper installation and operation of braking systems. The installer must use his/her own discretion to determine the suitability of all brake components and brake kits for every particular application. Speedway Motors, Inc. makes no warranties either expressed or implied including any warranty of merchantability or fitness for a particular purpose, other than those contained in its current catalog or website with respect to the goods identified on the face of the invoice. There is no warranty expressed or implied as to whether the goods sold hereby will protect the purchaser or ultimate user of such goods from injury or death.

**EXHAUST INSTALLATION ALERT** Exhaust systems and other component surface finishes are not permanent. Coatings, paint and other factory supplied cosmetic treatments are only intended to protect from surface corrosion in an unused state. No returns are allowed after the parts have been installed. Header flanges must be clean and clear of paint and surface contaminants prior to mating to exhaust gaskets. Exhaust fasteners must be re-torqued after the initial heat cycle and regularly thereafter to ensure a proper gasket seal is maintained. Should you decide to install this exhaust product at your home, be warned that pleasure car or light duty truck/van "bumper" jacks are intended for emergency use only. The use of frame contact jack stands in conjunction with a floor jack as a main support is highly recommended to minimize accidental dropping of a vehicle while the installation proceeds. We recommend the use of a shop hoist if possible. Please use caution! Speedway Motors, Inc. makes no warranties either expressed or implied including any warranty of merchantability or fitness for a particular purpose, other than those contain in its current catalog or website with respect to the goods identified on the face of the invoice. There is no warranty expressed or implied as to whether the goods sold hereby will protect the purchaser or ultimate user of such goods from injury or death.

**CHECK LOCAL LAW** Some parts are not legal for sale or use in California on any pollution controlled motor vehicles. These items are legal in California for racing vehicles only which may never be used upon a highway. Check local law.

© 2019, Speedway Motors, Inc.

**Speedway Motors, Inc.**

P.O. Box 81906 • Lincoln, NE 68501

800.979.0122 • [SpeedwayMotors.com](http://SpeedwayMotors.com)

