

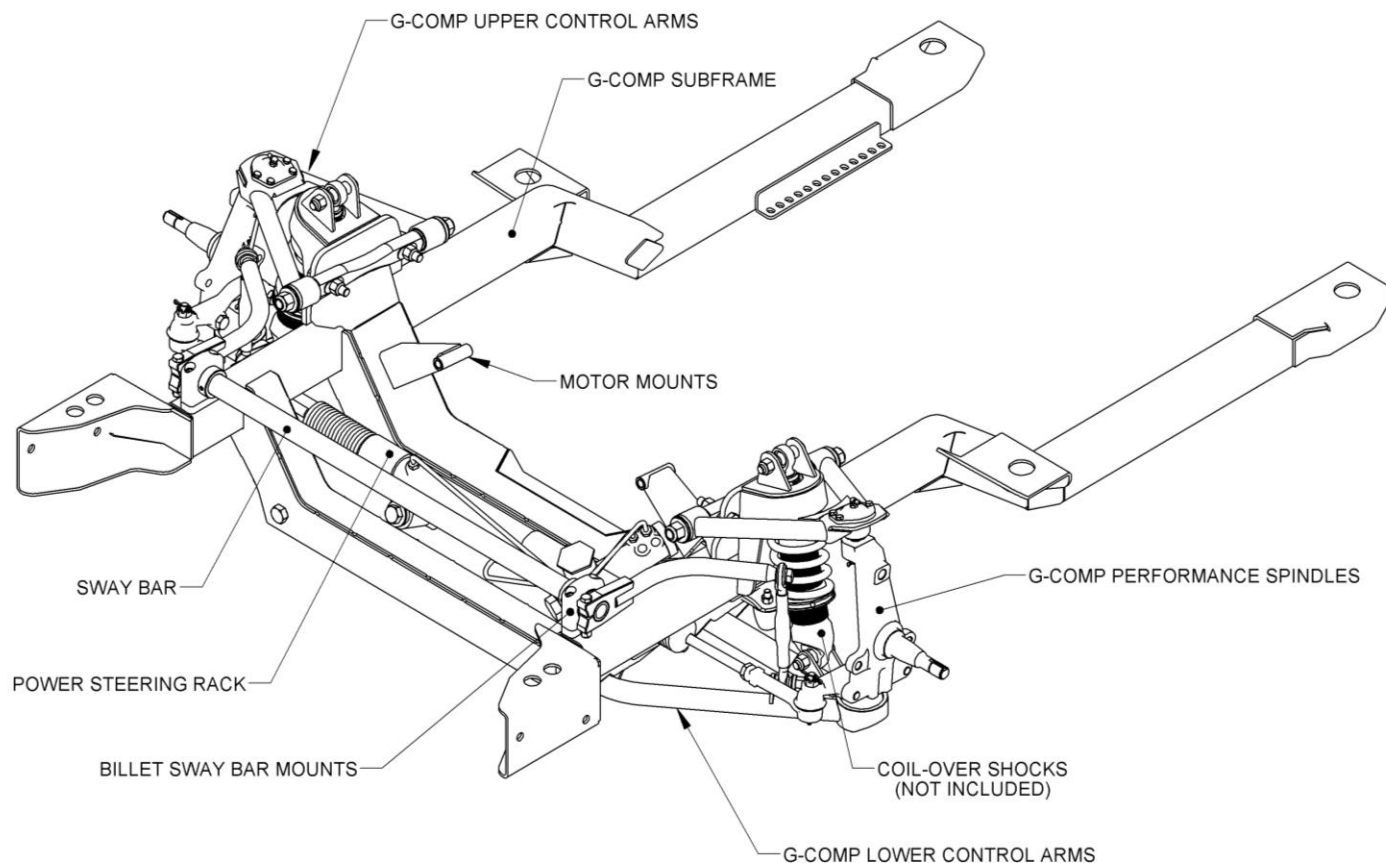
INSTRUCTION

350-110 G-Comp Front Suspension: 68-79 Chevy Nova

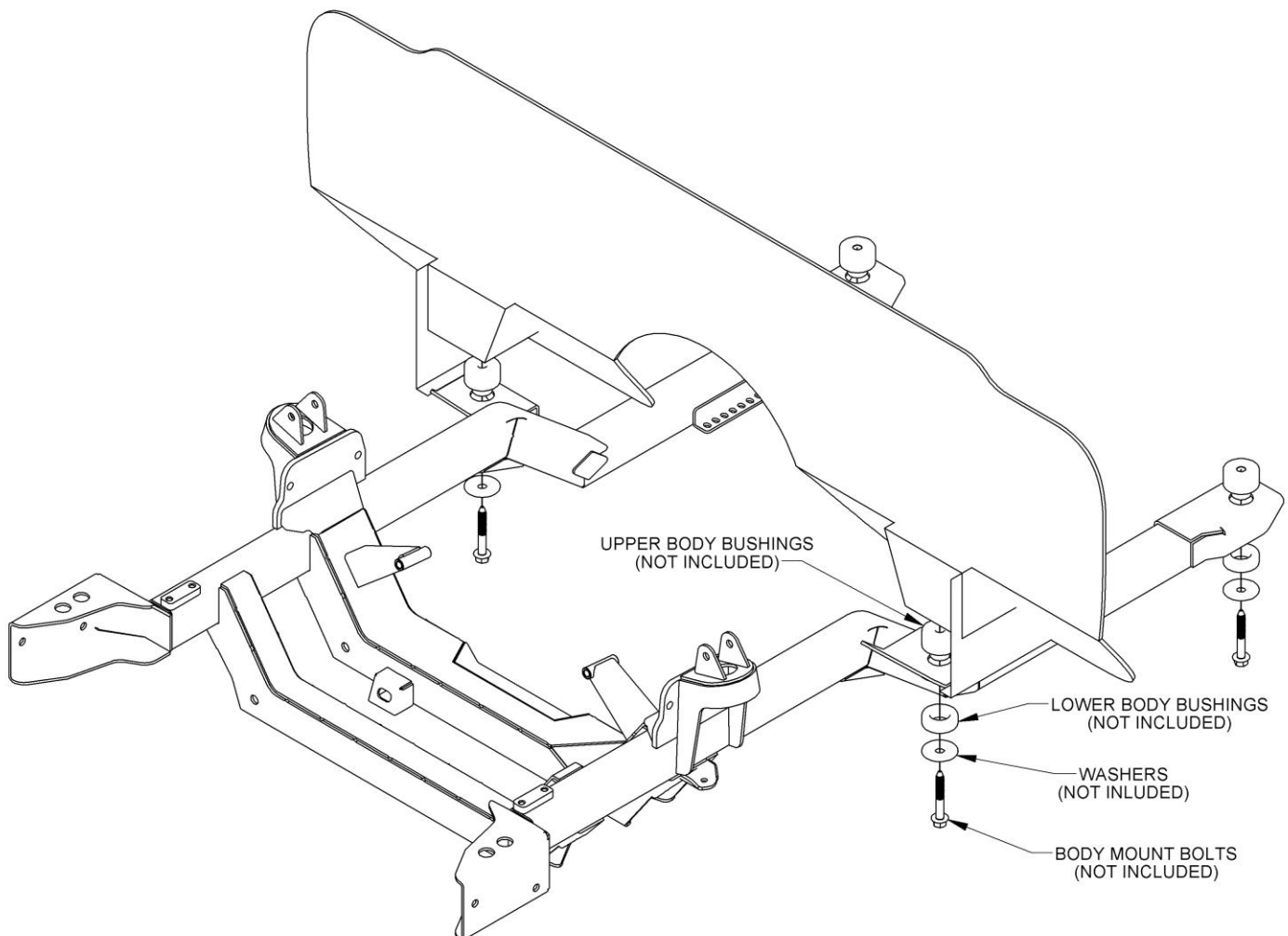
©Speedway Motors, Inc. 2017

Kit Contents:

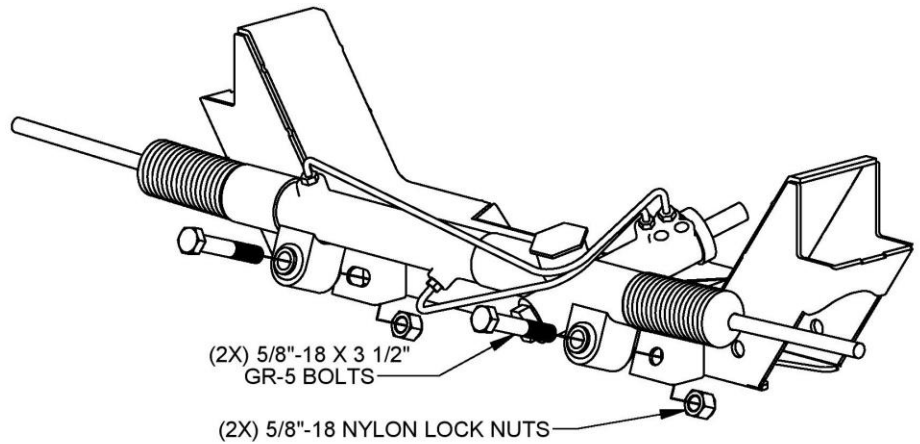
- | | |
|------------|-------------------------------|
| • 350100.2 | G-Comp Camber Shim Kit |
| • 350500.3 | Hardware Kit, G-Comp Camaro |
| • 350503 | G-Comp 34" Sway Bar |
| • 350510.1 | G-Comp Subframe, 67-69 Camaro |
| • 350510.2 | G-Comp Sway Bar Kit |
| • 91035000 | G-Comp Spindles |
| • 91035010 | G-Comp Steering Arms |
| • 91035341 | T-Bird Power Steering Rack |
| • 91035500 | G-Comp Upper Control Arms |
| • 91035600 | G-Comp Lower Control Arms |



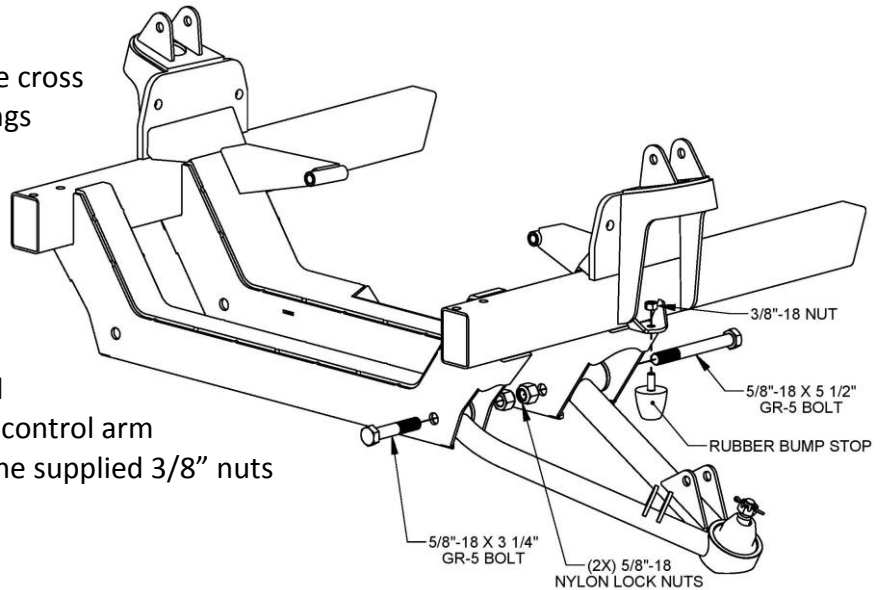
1. **Support the car** on jack stands or hoist. The front stands must be located on the main floor just behind the firewall. Do not support the car on the front sub-frame.
2. **Remove:** the hood and inner fenders. Remove the radiator, front bumper, fenders, and core support. Disconnect all electrical components from the firewall forward. Retain all hardware to be used during re-assembly. Remove the engine, transmission, and accessories. Support the subframe with a floor jack. Unbolt the subframe from the body and lower it down until the weight is supported by the front tires. The sub-frame can now be rolled out of the way.
3. **Install the G-Comp subframe.** Now is a good time to replace your old worn out body mount bushings. Place the new upper bushing halves into their locations on the subframe. Using a floor jack, raise the new G-Comp sub-frame into position while lining up the holes in the sub-frame with the body. Install new or re-use your OEM body mount bolts along with the lower body mount bushings and washers. **Note:** Start all of the body bolts before tightening any of them completely. Once all of the bolts have been started, make sure the subframe is aligned with the car, and tighten the bolts. With the subframe in place, you can now move the jack stands to the front crossmember. This will make the vehicle more stable while installing the rest of the kit.



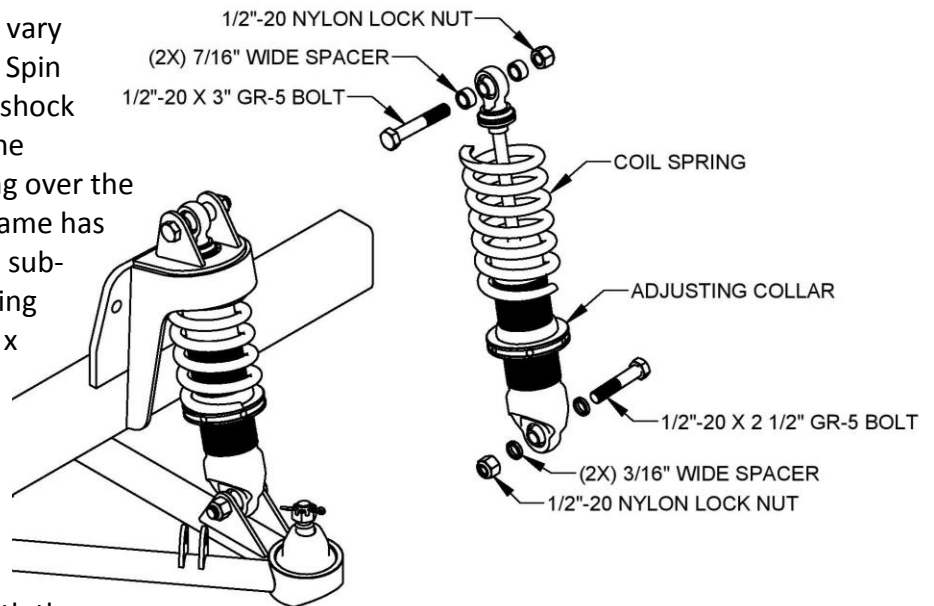
4. **Steering Rack.** This G-comp front suspension kit is designed to use a thunderbird style power steering rack. Install the steering rack as shown, using the two 5/8"-18 x 3 1/2" grade 5 bolts and nylon lock nuts. Torque to 65 ft lbs.

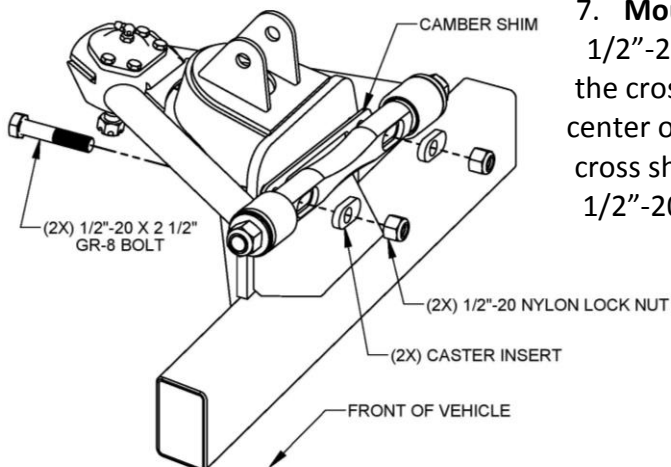


5. **Install the lower control arms** into the cross member. Align the control arm bushings with the lower control arm holes in the cross-member. The front bolts, 5/8"-18 x 3-1/4" Grade 5, are to be installed from the front side. The rear bolts are 5/8"-18 x 5-1/2" Grade 5, are to be installed from the rear. Install the 5/8"-18 nylon lock nuts and torque to 100 ft-lbs. Install the lower control arm bumps stops to the sub-frame using the supplied 3/8" nuts as shown.



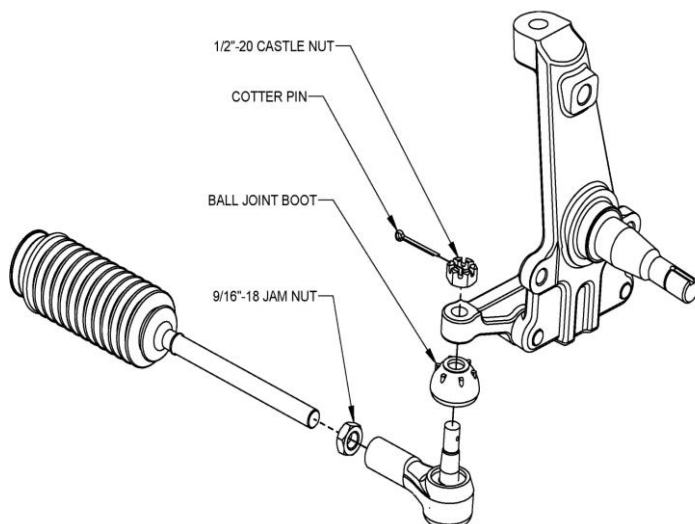
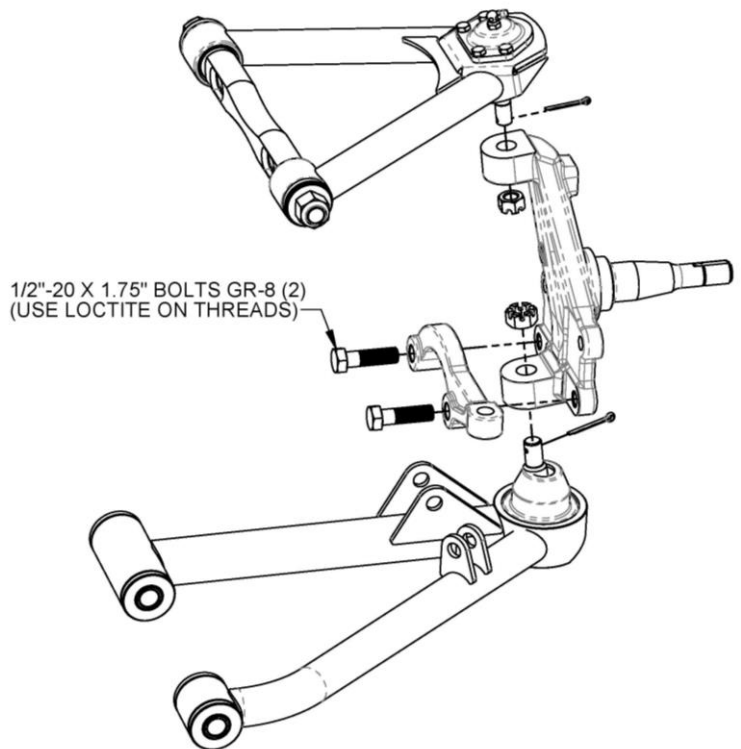
6. **Install the shocks.** This procedure may vary slightly depending on the shocks used. Spin the adjusting collar onto the threaded shock body. Adjust the collar all the way to the bottom of the threads. Install the spring over the shock body. **NOTE:** The G-Comp sub-frame has the upper spring retainer built into the sub-frame so the upper coil-over shock spring retainer is not used. Using the 1/2"-20 x 2-1/2" Grade 5 bolt and two 3/16" wide spacers, install the shock into the lower mount on the control arm. Secure it with a 1/2"-20 Grade 5 nylon insert lock nut. Fully extend the shock and raise the lower arm so the upper shock mount and spring align with the shock mount and spring pocket on the sub-frame. Install the 1/2"- 20 x 3" Grade 5 upper shock bolts and 7/16" wide spacers. Secure it with a 1/2"-20 Grade 5 nylon insert lock nut. Torque to 65 ft-lbs. **Note:** This kit is design to use shocks with a compressed length of 10" and an extended length of 14". Shock ends should be 1/2" bearings with a mounting width of 1". For recommended part numbers please visit our website or contact one of our tech experts.



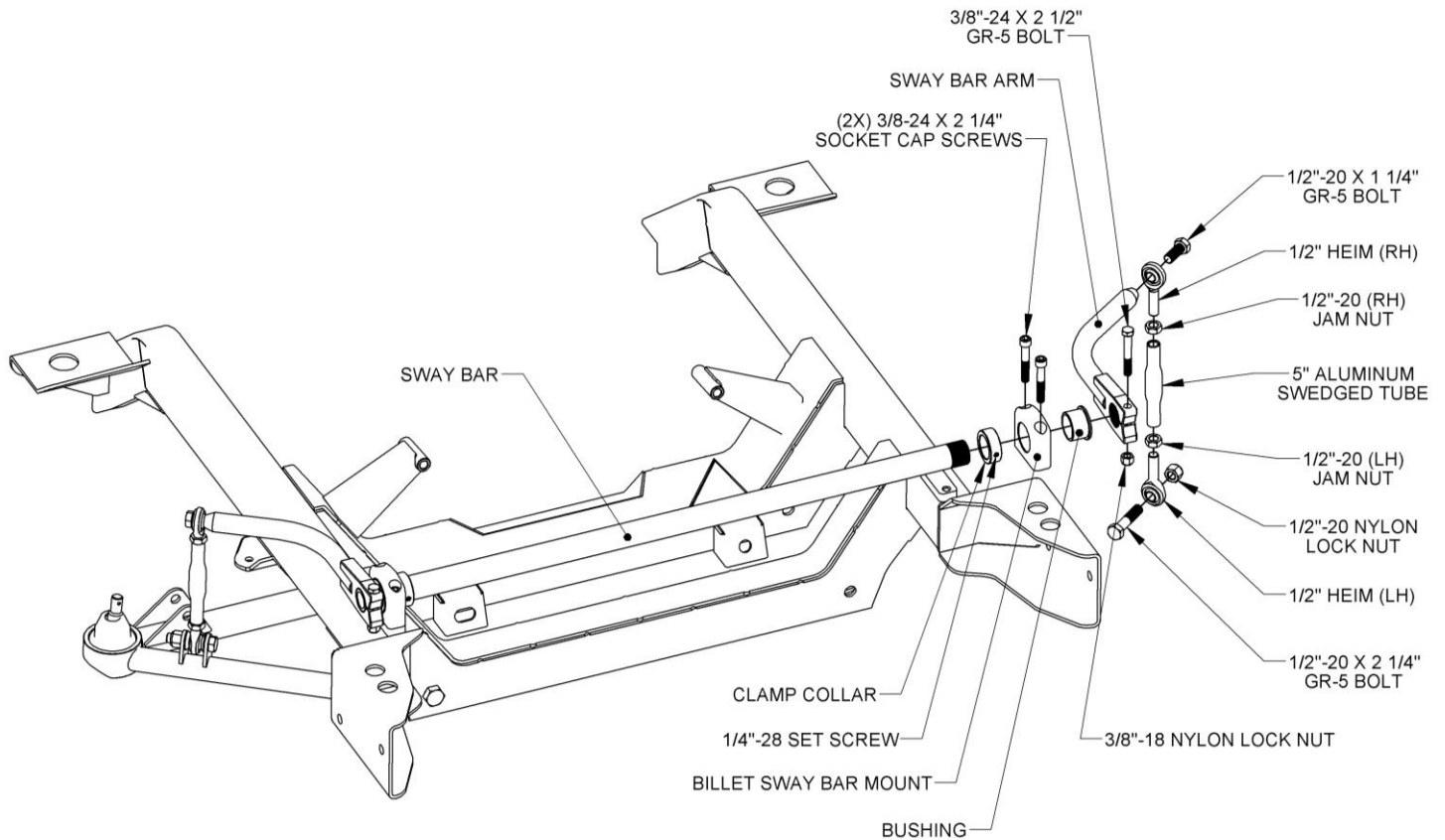


7. **Mount the upper control arms** to the sub-frame using the 1/2"-20 x 2 1/2" grade 8 bolts and nylon insert lock nuts. Rotate the cross shafts so the caster shim pockets are facing toward the center of the vehicle. Install the bolts through the caster shims, cross shafts, and the sub-frame as shown. Then secure with the 1/2"-20 Grade 5 nylon insert lock nuts. Torque to 72 ft-lbs.

8. **Install the spindles and steering arms.** Place the ball joint boots over the ball joints and install the spindle onto the lower ball joint. Install and tighten the supplied castle nut. Repeat with the upper ball joints and install the cotter pins. Bolt the steering arms to the spindles using the 1/2"-20 x 1-3/4" Grade 8 bolts. **NOTE:** Make sure to use Loctite on the threads and torque to 100 ft-lbs.



9. **Install the outer tie rod ends** and jam nuts onto the inner tie rods of the rack. Thread both tie rod ends on equally. Attach the tie rod ends to the steering arms using the castle nuts supplied with the tie rod ends. Tighten and install the cotter pins. Final alignment to be done at a later time.



10. Sway bar assembly: Press the bushings into the aluminum pillow-blocks and install the pillow-blocks to the front crossmember with the bushing shoulder to the inside. Use the four 3/8"-24 x 2-1/4" Grade 8 socket head cap screws to secure the pillow block to the subframe. Before fully tightening the bolts, slide the sway bar through the bushings, installing the two clamp collars to the inside of both pillow blocks. Now, torque the 3/8" socket cap screws to 42 ft-lbs. Center the sway bar between the pillow blocks. Slide one clamp collar up against the bushing shoulder in the pillow block and tighten the set screw. Slide the second clamp collar up to the opposite bushing in the pillow block leaving about .075" of side clearance between the clamp collar and the bushing. Tighten the set screw. **NOTE:** A nickel is about .075" thick and can be used as a spacer between the clamp collar and the bushing to provide the proper side clearance. Slide the sway bar arms onto the splined ends of the sway bar aligning them flush with the end of the bar. Make sure they are parallel or "clocked" to one another then tighten the 3/8"-16 x 2-1/2" grade 5 pinch bolts and nylon lock nuts. Assemble the sway bar links as shown, leaving roughly 1/4" of threads showing on either heim joint. Use the 1/2"-20 x 1-1/4" grade 5 bolts to secure the sway bar link to the sway bar arm. Mount one of the lower links into the bracket on the lower control arm using a 1/2"-20 x 2-1/4" grade 5 bolt and secure it with the 1/2"-20 nylon lock nut. Leave the bolt out of the lower link on one side at this time. The second bolt/nut will be installed after the ride height is set and the car is setting on level ground. This will ensure that there is no preload on the sway bar at ride height.

11. Install the brake kit to the spindle per the instructions included with your brake kit. **Note:** For recommended part numbers please visit our website or contact one of our tech experts.

12. **Align the subframe:** Before installing the front sheet metal, you must first make sure the subframe is aligned with the body. Start by setting the toe to zero and making sure the tires are perfectly straight. **Note:** this is easily accomplished with the tires removed and a 2'-3' long piece of angle iron clamped to each brake rotor. Measure the distance between two pieces, both in the front, and in the rear. Adjust the tie rod length until the distance is the same. Now measure the wheel base on both sides of the car. If they are different, you must loosen the body bolts and slightly adjust the subframe as needed.
13. **Install the engine and transmission.** The G-Comp sub-frame was designed to use stock type GM motor mounts (910-18012) or Speedway's Prothane mounts (910-18015).
14. **Install** the core support, radiator, grill, and fenders. All accessories and other components can now be installed.
15. **Alignment.** The lower control arms should be level with all the weight on the car. To adjust the ride height, take the weight off the suspension and turn the threaded adjusters on the bottom of the coil over shocks. Turning the adjusters clockwise will raise the ride height. Once the ride height has been set, place the car back down on level ground. Adjust the free heim end on the sway bar link so that it lines up with the bracket in the lower control arm. Keep adjusting the heim end until the remaining 1/2"-20 x 2-1/4" grade 5 bolt will slide through easily. Secure it with the 1/2"-20 nylon insert lock nut, and torque to 64 ft-lbs.

Set the alignment to the following initial settings:

Caster	=	5°
Camber	=	negative .25°-.5°
Toe In	=	0" - 1/8" Toe Out

16. **Caster** adjustments are made by changing the caster inserts. The caster inserts are identified with numbers indicating the distance of the hole from the center of the insert in 1/8" increments.
#1 = 1/8" #2 = 1/4" #3 = 3/8"
The inserts can be reversed to move the hole in front of or behind center for a total range of 3/4".
17. **Camber** is adjusted using the included A-arm shim plates. Additional shim plates can be purchased separately if desired under Speedway Part # 917-21005. These are available in thicknesses ranging from 1/8" to 1/2".

IMPORTANT

DISCLAIMER

In an effort to offer our customers the low prices, quick service and great value, Speedway Motors reserves the right to change suppliers, specifications, colors, prices, materials. Each of the previous items is subject to change without notice. Speedway is not responsible for any typographical errors or misinterpretations. Quantities are limited on some items.

WARRANTY DISCLAIMER

The purchaser understands and recognizes that racing parts, specialized street rod equipment, and all parts and services sold by Speedway Motors, Inc. are exposed to many and varied conditions due to the manner in which they are installed and used. Speedway Motors, Inc. makes no warranties, either express or implied, including any warranty of merchantability or fitness for a particular purpose other than those contained in its current catalog with respect to the goods identified on the face of the invoice. There is no warranty expressed or implied as to whether the goods sold hereby will protect purchaser or ultimate user of such goods from injury or death. Speedway Motors assumes no liability after this period.

BRAKE INSTALLATION ALERT

The selection and installation of brake components should only be done by personnel experienced in the proper installation and operation of braking systems. The installer must use his/her own discretion to determine the suitability of all brake components and brake kits for every particular application. Speedway Motors, Inc. makes no warranties either expressed or implied including any warranty of merchantability or fitness for a particular purpose, other than those contained in its current catalog or website with respect to the goods identified on the face of the invoice. There is no warranty expressed or implied as to whether the goods sold hereby will protect the purchaser or ultimate user of such goods from injury or death.

DAMAGE CLAIMS

Always inspect your package upon delivery. Inspect all packages in the presence of the delivery driver. The driver must note any damage. Ask the driver the Carrier's procedures for handling damage claims. You must hold the original box, packing material and damaged merchandise for inspection or the carrier will not honor the claim. Notify Speedway Motors customer service department for instructions on returning damaged goods. Speedway is not responsible if no notification is given within 5 days of receipt.

SHORTAGES

Always check the contents of your delivery to insure all the parts that you ordered were received. Please read the invoice. Double check all packing materials, small items may be wrapped inside with these products. Shortages may occur from damage to the box, so save all packing materials. Inspect the box for holes that would allow parts to fall out. If you are missing any item(s) be sure to check your invoice for back orders or canceled items before calling the customer service department. If Speedway has to split a shipment into multiple boxes, packages may be delivered on different days. You need to contact the customer service department within 5 days of delivery to assure the prompt replacement. Speedway Motors assumes no liability after this period.

REFUSALS

All refused COD customers will be billed a 15% restocking charge plus freight to and from the destination! If you have questions please contact Speedway's customer service department.

WARRANTY CLAIMS

If an item has a manufacturer's warranty as being free from defects we will exchange only. If the item has been used and you are requesting warranty work, this may take up to 30 days as warranty work is done by the manufacturer NOT Speedway Motors. If you have any questions please contact customer service.

RETURNS

Speedway wants you to be satisfied with your purchase. If within 30 days after you receive your shipment you are not satisfied, you may return the item for refund or exchange. All exchanged or returned merchandise must be in original factory condition with no modifications or alterations. Returned merchandise must include all packaging materials, warranty cards, manuals, and accessories. If the items being returned need to be repackaged there will be a re-packing charge. Re-pack the item in a sturdy box and include a copy of your invoice and complete the form on the back of the invoice. You must ship orders back **PRE-PAID. WE DO NOT ACCEPT COD SHIPMENTS.** All exchanges need to have reshipping charges included. Items that are returned after 30 days are subject to 15% restocking charges. All fiberglass returned will have 15% restocking charge. No returns on electrical parts, video tapes, and books. Absolutely no returns on special order or close out merchandise.

FREE CATALOGS

Speedway Motors offers FREE catalogs for Race, Street, Sprint and Midget, Sport Compact and Pedal Car Restoration.

Some items are not legal for sale or use in California on pollution controlled motor vehicles. These items are legal in California for racing vehicles only which may never be used upon a highway.

**Speedway Motors Inc.,
P.O. Box 81906 Lincoln, NE 68501
800.979.0122 SpeedwayMotors.com**



© , Speedway Motors, Inc.