

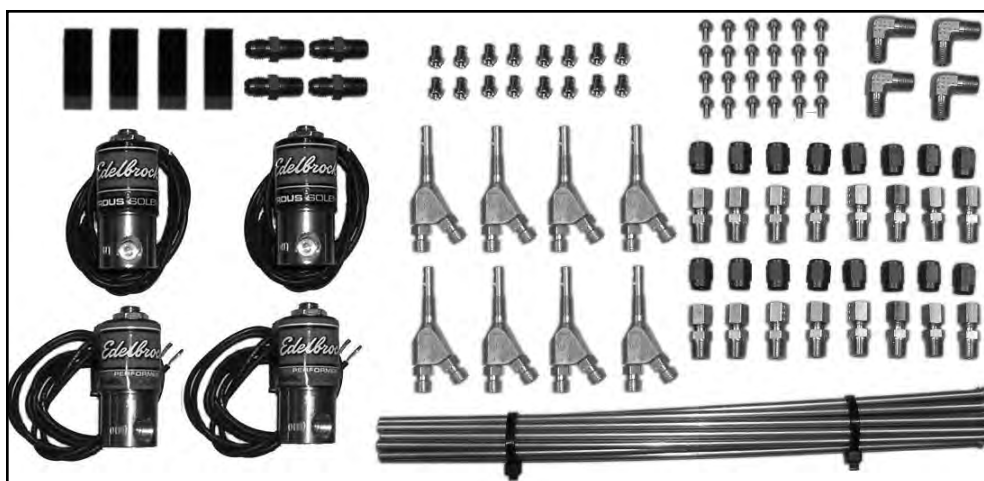


EDELBROCK NITROUS SYSTEMS
VICTOR V8 DIRECT PORT WITH E2 JET MAP
CATALOG #71840
INSTALLATION INSTRUCTIONS

Please read both your **DIRECT PORT INSTRUCTION MANUAL** and this **JET MAP** insert before installing your Edelbrock Nitrous System. If you have any questions or comments, please feel free to contact our **Technical Hotline at: 1-800-416-8628** from 7a.m.-5p.m., Monday through Friday, Pacific Time or e-mail us at Edelbrock@Edelbrock.com.

BILL OF MATERIALS (Excluding Electrical)

Qty.	Description	Qty.	Description
<input type="checkbox"/> 2	Performer Nitrous Solenoid	<input type="checkbox"/> 8	Red Tube Nuts
<input type="checkbox"/> 2	Performer Fuel Solenoid	<input type="checkbox"/> 16	Compression Fittings
<input type="checkbox"/> 8	Edelbrock E2 Nozzles	<input type="checkbox"/> 4	Distribution Blocks
<input type="checkbox"/> 16	3/16" Tubing	<input type="checkbox"/> 4	90° Union Fittings
<input type="checkbox"/> 16	Tube Sleeves	<input type="checkbox"/> 2	4AN Nitrous Filter Fitting
<input type="checkbox"/> 8	Blue Tube Nuts	<input type="checkbox"/> 2	4AN Red Fitting
		<input type="checkbox"/> 40	Various Jets



Jet Map

Approx. HP Gain	Nitrous Jet	Fuel Jet	Sugg. Timing Retard
100 HP	16	16	2°-4°
150 HP	20	16	4°-6°
200 HP	24	20	6°-8°
250 HP	28	24	10°+

This jet map is based on a nitrous system with a flowing fuel pressure of 6.0-6.5 PSI. Any variations different than 6.0-6.5 will change your jet map and potentially damage your engine. We highly recommend using the **Edelbrock Flow Test Tool (Catalog #76506)** to set your flowing fuel pressure.

Edelbrock Corporation • 2700 California St. • Torrance • CA 90503
Tech Line: 800-416-8628
Office: 310-781-2222
E-Mail: Edelbrock@Edelbrock.com