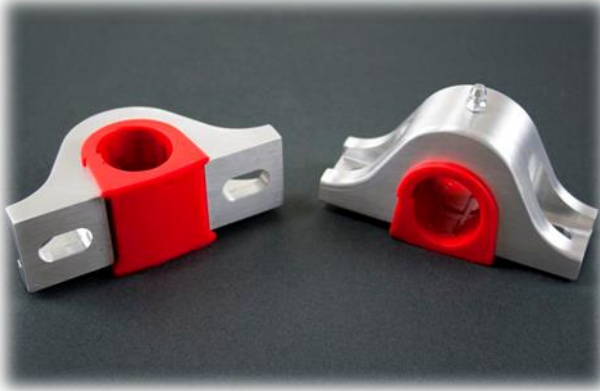


**Heavy Duty Billet Aluminum Sway Bar Mounts- 1-5/16"**

Item # 0066

**Hardware:** New hardware is not included with the sway bar mounts due to the variety of bolt sizes used on multiple vehicles.



2-3 full pumps of grease from a grease gun.

1. Remove old sway bar bushings and unhook end links.
2. Clean and remove any rust scale from the sway bar.
3. Grease the I.D. of the bushings and contact area of the sway bar prior to installation.
4. Install new bushings and aluminum brackets using existing hardware.
5. Rotate the sway bar back and forth to disperse grease throughout the bushing.
6. Reinstall end links.

**Note:** For periodic maintenance, each bushing requires

**Heavy Duty Billet Aluminum Sway Bar Mounts- 1-5/16"**

Item # 0066

**Hardware:** New hardware is not included with the sway bar mounts due to the variety of bolt sizes used on multiple vehicles.



2-3 full pumps of grease from a grease gun.

1. Remove old sway bar bushings and unhook end links.
2. Clean and remove any rust scale from the sway bar.
3. Grease the I.D. of the bushings and contact area of the sway bar prior to installation.
4. Install new bushings and aluminum brackets using existing hardware.
5. Rotate the sway bar back and forth to disperse grease throughout the bushing.
6. Reinstall end links.

**Note:** For periodic maintenance, each bushing requires

## **Item # 0066**

1 5/16" Heavy Duty Alum. Sway Bar Mounts  
UMI Performance Inc.  
Made in Pennsylvania, USA

## **Item # 0066**

1 5/16" Heavy Duty Alum. Sway Bar Mounts  
UMI Performance Inc.  
Made in Pennsylvania, USA