

1970 – 1981 GM F-Body  
 Solid Body Mounts  
 P/N#2664



Box Contents

Qty	Part #	Description
2	2664A	Radiator Support Mount Bottom
2	2664B	Radiator Support Mount Top
2	2664C	Firewall Mount Top
4	2664D	Firewall/Rear Mount Bottom
2	2664E	Rear Mount Top
2		1/2-13 x 3 Gr 8 bolt
2		1/2-13 Nylock Nut
2		1/2 flat washer
2		1/2 oversize flat washer
4		5/8-11 x 3 1/4 Gr 8 Bolt
4		5/8 flat washer

Solid Body Mounts for 1970-1981 F-Bodys stiffen the connection between the front subframe and the Rear unibody structure. During heavy cornering and braking, the factory rubber bushings flex giving an unresponsive and unprecise feel. Solid mounts increase the rigidity to allow the suspension to better control the handling of the car.

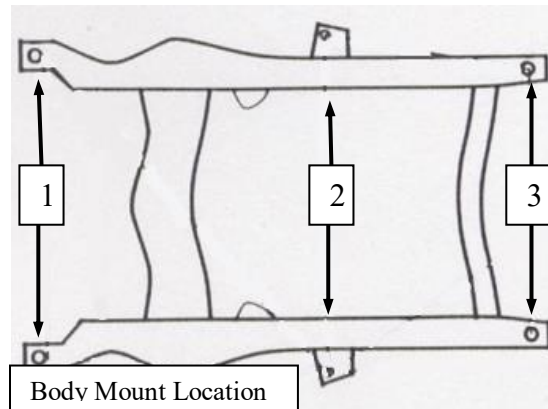
UMI Performance body mounts feature and interlocking design to ensure the mounts do not move and change the alignment of the vehicle.

### Tools required:

Jack and Jack Stands or Lift, Common hand tools (ratchet, sockets, wrenches), prybar

### Installation

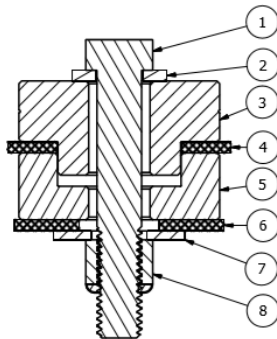
1. Raise car to a comfortable working height using the method of your choice. It is important to support the front under an area other than the front subframe. If jacking on the pinch weld it is suggested to use a 2x4 or 4x4 to spread out load. Follow applicable safety procedures.
2. Locate the 6 Subframe to Body Mounts. Position #1 under the radiator support, visible from under the hood. Position #2 at the firewall, on the outside of the subframe. Position #3 at the rear of the subframe, under middle of car. See Mount Location Diagram



3. Loosen all mounts, but do not remove completely. It is easiest to remove/replace mounts one at a time. Install on side at the time with the other side loosened only. Refer to page 3 for the assembly order of each location
4. Place a small amount of grease on the Aluminum mount where it rests on the subframe and body. Use the supplied grease packet.
5. Once all mounts are in place tighten all bolts, starting at the rear and working forward.  
Torque settings  
Location 1 – 70 ft/lbs  
Location 2 & 3 – 100 ft/lbs

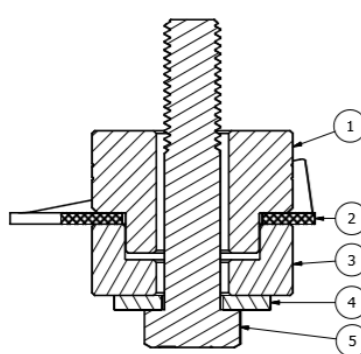
*Note: If any shims were used for body alignment, These shims will need to be reused for proper body alignment.*

LOCATION #1



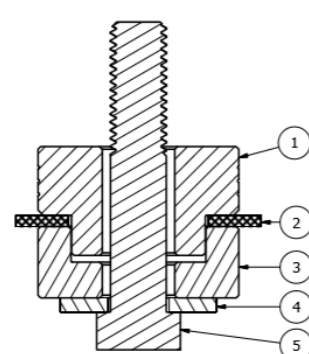
LOCATION #1	
ITEM	PART NUMBER
1	1/2-13 x 3" bolt
2	1/2 Flat Washer
3	2664A (1 Groove)
4	Core Support Bracket
5	2664B Bottom Mount
6	Subframe
7	1/2 Oversize Washer
8	1/2-13 Nyloc Nut

LOCATION #2



LOCATION #2	
ITEM	PART NUMBER
1	2664C (2 Grooves)
2	Subframe
3	2664D Bottom Mount
4	5/8 Flat Washer
5	5/8-11 x 3 1/4" Bolt

LOCATION #3



LOCATION #3	
ITEM	PART NUMBER
1	2664E (3 grooves)
2	Subframe
3	2664d Bottom Mount
4	5/8 Flat Washer
5	5/8-11 x 3 1/4" Bolt



BEFORE



AFTER



509 Hemlock St  
Philipsburg, PA 16866  
Ph- 814.343.6315 Fax- 814.343.6318

## **Installation Instructions**

support@umiperformance.com  
www.umiperformance.com

### **Item #2664**

Solid Body Mounts  
1970-1981 GM F-Body

UMI Performance Inc.  
Made in Philipsburg, PA - USA

#### **DISCLAIMER OF WARRANTY**

THE PURCHASER ACCEPTS ALL RESPONSIBILITY FOR THE FINAL USE OF THE PRODUCTS PURCHASED AND SHALL HOLD UMI PERFORMANCE INCORPORATED AND ITS REPRESENTATIVES HARMLESS IN ANY LEGAL PROCEEDING ARISING FROM THE USE OF SUCH PRODUCTS.

UMI PERFORMANCE INCORPORATED DOES NOT WARRANT, GUARANTEE, OR MAKE ANY REPRESENTATION REGARDING THE USE, OR THE RESULT OF THE USE OF ANY PERFORMANCE PRODUCT MANUFACTURED OR DISTRIBUTED BY UMI PERFORMANCE INCORPORATED. PURCHASER ASSUMES THE ENTIRE RISK AS THE RESULT AND PERFORMANCE OBTAINED FROM THE INSTALLATION AND USE OF SAID PERFORMANCE PRODUCTS. UMI PERFORMANCE INCORPORATED ASSUMES NO RESPONSIBILITY FOR AND HEREBY DISCLAIMS ALL WARRANTIES, ORAL OR WRITTEN, EXPRESS OR IMPLIED INCLUDING WITHOUT LIMITATION, THE WARRANTIES OF MERCHANTABILITY AND OF FITNESS FOR A PARTICULAR PURPOSE.

ALL PARTS ARE WARRANTED TO BE FREE OF DEFECT AT THE TIME OF PURCHASE. WARRANTY IS ONLY EXTENDED TO REPLACEMENT OF PARTS FROM UMI PERFORMANCE INCORPORATED AND DOES NOT COVER LABOR, TOWING OR ANY OTHER DIRECT OR INDIRECT COST. UMI PERFORMANCE INCORPORATED IS NOT RESPONSIBLE FOR ANY CONSEQUENTIAL DAMAGE, EXPENSE OR INJURY ARISING FROM THE USE, MISUSE OR IMPROPER INSTALLATION OF ANY PRODUCT MANUFACTURED AND/OR SOLD BY UMI PERFORMANCE INCORPORATED.