

1975-1981 GM F-body Front Chassis Brace



P/N 2658

Box Contents

Qty	Part #	Description
1	2658	Front Brace
1	2658 Install Instructions	2658 Install Instructions

**Notes:**

Before installation, verify box contents are correct and read through instructions completely.

Always ensure proper support when working under a vehicle. Use approved jack stands when using a floor jack as well as proper technique for securing your car while on a drive-on lift.

**Tools required:**

SAE wrenches and sockets

**Installation**

1. Raise car to a comfortable working height using the method of your choice. Follow applicable safety procedures.
2. Locate the existing front sway bar and the front sway bar clamps and bushings.
3. Loosen the two rear bolts that hold both the left and right sway bar bushings (Make sure they have at least 3 or 4 threads left still attached to the frame)

4. Completely remove the two front bolts that hold both the left and right sway bar bushings
5. The sway bar should now be held by only the rear bolts that are loosened.
6. This allows the open slots in the brace to slide over the rear bolts. The brace slots should be in between the frame and the sway bar bushings.
7. Loosely install the two front sway bar bolts back through the sway bar bushing clamps and through the holes in the 2658 brace.
8. While all four bolts are loosely installed, pull the brace toward the front of the car to allow for maximum clearance between the sway bar and the 2658 brace.
9. Tighten all four bolts to about 10 ft-lbs (or moderately tight with hand tools).
10. Installation is complete.

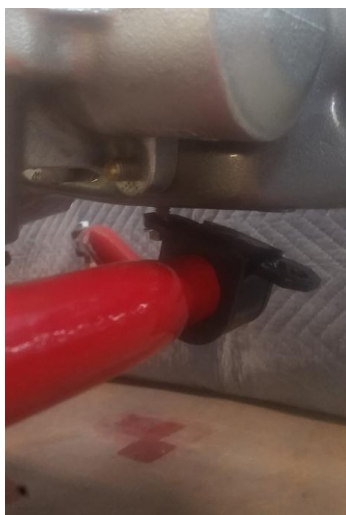


Figure 1) Front bolt removed and rear bolt loosened



Figure 2) Inserting brace slots onto the rear sway bar bolt



Figure 3) Tighten sway bar bolts down once all four bolts are started



Figure 4) Fully Installed



509 Hemlock St  
Philipsburg, PA 16866  
Ph- 814.343.6315 Fax- 814.343.6318  
**Installation Instructions**  
support@umiperformance.com  
www.umiperformance.com

#### DISCLAIMER OF WARRANTY

THE PURCHASER ACCEPTS ALL RESPONSIBILITY FOR THE FINAL USE OF THE PRODUCTS PURCHASED AND SHALL HOLD UMI PERFORMANCE INCORPORATED AND ITS REPRESENTATIVES HARMLESS IN ANY LEGAL PROCEEDING ARISING FROM THE USE OF SUCH PRODUCTS.

UMI PERFORMANCE INCORPORATED DOES NOT WARRANT, GUARANTEE, OR MAKE ANY REPRESENTATION REGARDING THE USE, OR THE RESULT OF THE USE OF ANY PERFORMANCE PRODUCT MANUFACTURED OR DISTRIBUTED BY UMI PERFORMANCE INCORPORATED. PURCHASER ASSUMES THE ENTIRE RISK AS THE RESULT AND PERFORMANCE OBTAINED FROM THE INSTALLATION AND USE OF SAID PERFORMANCE PRODUCTS. UMI PERFORMANCE INCORPORATED ASSUMES NO RESPONSIBILITY FOR AND HEREBY DISCLAIMS ALL WARRANTIES, ORAL OR WRITTEN, EXPRESS OR IMPLIED INCLUDING WITHOUT LIMITATION, THE WARRANTIES OF MERCHANTABILITY AND OF FITNESS FOR A PARTICULAR PURPOSE.

ALL PARTS ARE WARRANTED TO BE FREE OF DEFECT AT THE TIME OF PURCHASE. WARRANTY IS ONLY EXTENDED TO REPLACEMENT OF PARTS FROM UMI PERFORMANCE INCORPORATED AND DOES NOT COVER LABOR, TOWING OR ANY OTHER DIRECT OR INDIRECT COST. UMI PERFORMANCE INCORPORATED IS NOT RESPONSIBLE FOR ANY CONSEQUENTIAL DAMAGE, EXPENSE OR INJURY ARISING FROM THE USE, MISUSE OR IMPROPER INSTALLATION OF ANY PRODUCT MANUFACTURED AND/OR SOLD BY UMI PERFORMANCE INCORPORATED.

### Item # 2658

75-81 GM F-Body Front Chassis brace

UMI Performance Inc.  
Made in Philipsburg, PA - USA