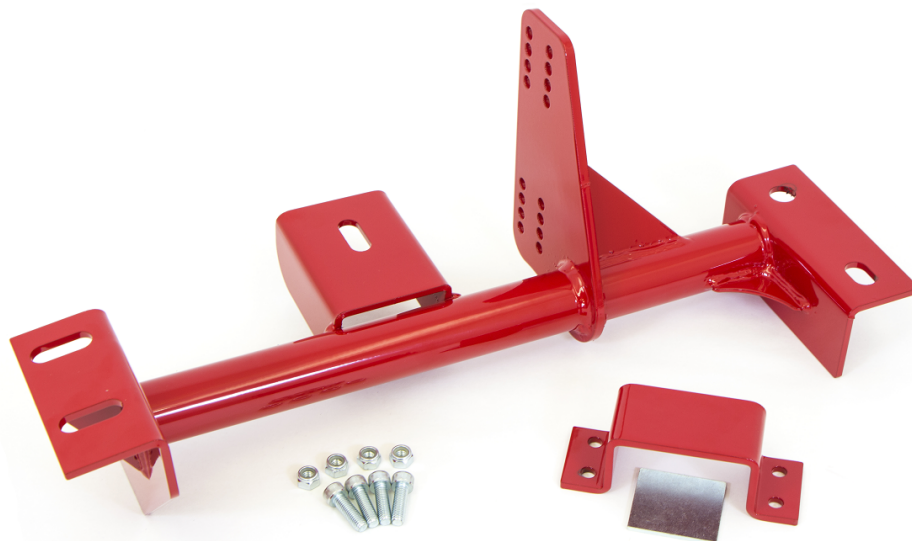


1998-2002 GM F-body Torque Arm Relocation Kit – 4L80E
P/N 2237



Box Contents

Qty	Part #	Description
1	2237	Torque Arm Relocation Brace
1	2208E	Aluminum Spacer
1	2209E	Bushing Clampshell
4	1000027	M8 x 25 mm Allen Bolt
4	1000007	M8 Nylon Lock Nut
1	2237 Install Instructions	2237 Install Instructions

NOTE: This product **MUST** be used with a solid one-piece polyurethane bushing. This product will **NOT** work with the factory bushing that utilizes a two-piece design. If you are using a stock torque arm, an aftermarket polyurethane bushing **MUST** be purchased. This item can be purchased through UMI Performance. UMI Performance Item #3004.

Before installation, verify box contents are correct and read through instructions completely. Always ensure proper support when working under a vehicle. Use approved jack stands when using a floor jack as well as proper technique for securing your car while on a drive-on lift.

Tools required:

SAE wrenches and sockets

If installation is performed without a vehicle lift, (2) floor jacks will be required to ease installation. If installation is performed with a vehicle lift, (1) floor jack will be necessary.

Installation

1. On a solid, level surface, jack up the front vehicle sub-frame to a good working height, making sure both wheels are off of the ground, and secure with (2) jack stands under the frame, one on each side. Move to the rear of the vehicle, lift to match the front working height, and place (2) more jack stands on the inner frame rails on each side. Do NOT place jack stands under the rear axle. Leave the jack under the rear end.
2. Place the second floor jack under the transmission and apply slight upward pressure. Remove the 18mm mounting nut that attaches the transmission to the crossmember.
3. Remove (4) 15mm bolts attaching the transmission cross member to the vehicle frame. Remove the crossmember.
 - a.) Depending on the vehicle's exhaust setup, the Y-pipe may need to be removed for installation.
4. Locate the torque arm mount at the transmission and remove the bolts from the clamshell. If the torque arm still consists of a factory bushing, separate the bushing into (2) halves, remove, and discard. The factory bushing can NOT be used with the new relocation kit.
5. The entire factory torque arm mount must now be removed from the transmission and discarded.
 - a.) Manual transmissions will require lowering the transmission to remove torque arm mount assembly.

PLEASE READ CAREFULLY: With UMI's relocation design, we have found the easiest way to install the new crossmember is to attach it to the torque arm prior to installing it to the vehicle. Please follow each step below to ease installation.

NOTE: The factory torque arm mounting location is the second hole from the bottom.

7. Jack the transmission up and place a jack stand under it for support. If (2) jacks are available, disregard this step.
8. Locate a floor jack under the rear end and jack the rear end up until the front of the torque arm is low enough for the relocation bracket to be easily installed to the torque arm.
9. Place the torque arm bushing onto the torque arm. The supplied aluminum spacer is placed between the bushing and the new torque arm mount. This prevents the bushing from collapsing.
10. Attach the new UMI relocation crossmember to the torque arm using the new clamshell bracket and (4) bolts supplied with the kit. Tighten all (4) Allen head bolts.
11. With the relocation kit installed onto the torque arm, slowly lower the rear end until the crossmember lines up with the (4) factory mounting holes in the vehicle frame and the



509 Hemlock St
Philipsburg, PA 16866
Ph- 814.343.6315 Fax- 814.343.6318

Installation Instructions

support@umiperformance.com
www.umiperformance.com

transmission bolt. An assistant may be needed in order to help guide the crossmember into place. Jacking the transmission up and down will also help line up the mounting holes.

12. Once the crossmember is in position, tighten all (4) Allen bolts to 48 ft lbs. Tighten the transmission mounting nut at this time. Lower the vehicle to the ground.



509 Hemlock St
Philipsburg, PA 16866
Ph- 814.343.6315 Fax- 814.343.6318
Installation Instructions
support@umiperformance.com
www.umiperformance.com

DISCLAIMER OF WARRANTY

THE PURCHASER ACCEPTS ALL RESPONSIBILITY FOR THE FINAL USE OF THE PRODUCTS PURCHASED AND SHALL HOLD UMI PERFORMANCE INCORPORATED AND ITS REPRESENTATIVES HARMLESS IN ANY LEGAL PROCEEDING ARISING FROM THE USE OF SUCH PRODUCTS.

UMI PERFORMANCE INCORPORATED DOES NOT WARRANT, GUARANTEE, OR MAKE ANY REPRESENTATION REGARDING THE USE, OR THE RESULT OF THE USE OF ANY PERFORMANCE PRODUCT MANUFACTURED OR DISTRIBUTED BY UMI PERFORMANCE INCORPORATED. PURCHASER ASSUMES THE ENTIRE RISK AS THE RESULT AND PERFORMANCE OBTAINED FROM THE INSTALLATION AND USE OF SAID PERFORMANCE PRODUCTS. UMI PERFORMANCE INCORPORATED ASSUMES NO RESPONSIBILITY FOR AND HEREBY DISCLAIMS ALL WARRANTIES, ORAL OR WRITTEN, EXPRESS OR IMPLIED INCLUDING WITHOUT LIMITATION, THE WARRANTIES OF MERCHANTABILITY AND OF FITNESS FOR A PARTICULAR PURPOSE.

ALL PARTS ARE WARRANTED TO BE FREE OF DEFECT AT THE TIME OF PURCHASE. WARRANTY IS ONLY EXTENDED TO REPLACEMENT OF PARTS FROM UMI PERFORMANCE INCORPORATED AND DOES NOT COVER LABOR, TOWING OR ANY OTHER DIRECT OR INDIRECT COST. UMI PERFORMANCE INCORPORATED IS NOT RESPONSIBLE FOR ANY CONSEQUENTIAL DAMAGE, EXPENSE OR INJURY ARISING FROM THE USE, MISUSE OR IMPROPER INSTALLATION OF ANY PRODUCT MANUFACTURED AND/OR SOLD BY UMI PERFORMANCE INCORPORATED.

Item # 2237

98-02 GM F-Body Torque Arm Relocation Kit – 4L80E

UMI Performance Inc.
Made in Philipsburg, PA - USA