

1982-1992 GM F-Body Front Sway Bar

Item # 2117



- Kit Includes-**
- (1) 1.375" sway bar,
 - (2) End Links
 - (2) sway bar bushings with clamshells
 - (1) 2117A – Black Powder coated Bracket
 - (1) 2117B – Black Powder coated Bracket
 - (1) 2117C – Black zinc spacer
 - (1) 2117D – Black zinc spacer
 - (4) 1000035 – m10 flat washer
 - (3) 1000090 – m10 x 35mm flange head bolt
 - (4) 1000116 – m10 stud 37mm
 - (4) 1000117 – m10 flange nut – 10.9
 - (4) 1000118 – m10 x 30mm button head

The UMI Performance Front Sway Bar and Installation kit improves the performance of your 3rd gen F Body by reducing Front Body Roll during cornering. Relocation Brackets are also included to improve clearances around the steering box and idler arm, as well as wheel and tire clearances.

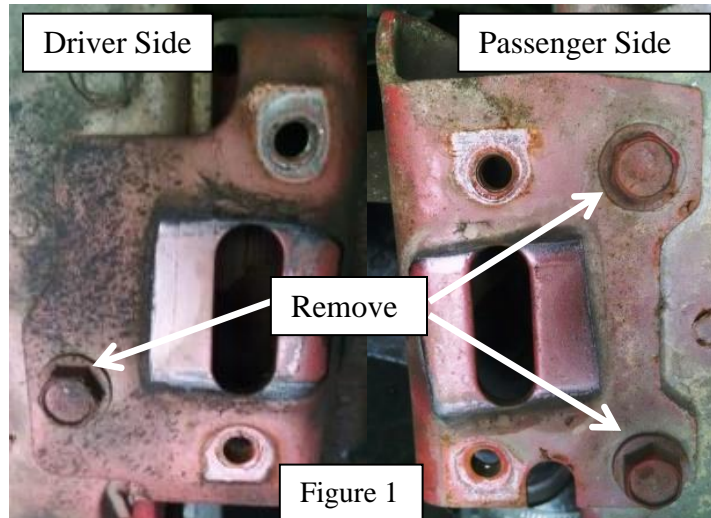
Tools needed to complete this installation are the following: Floor jack & 2 Jack Stands or vehicle lift, Common hand tools (ratchet, sockets, wrenches). We recommend having a second person to assist with the installation

1. Lift the vehicle in the air to gain access under the front of the car. Front wheels need to be off of the ground. If using a floor jack, set the vehicle on jack stands before going under the car.
2. Remove existing Sway bar from the car. It is recommended to remove the endlinks first, then the clamshells on the chassis. Cutting may be required to remove the existing endlinks, new endlinks are included with the 2117 sway bar.

Thank you for Putting Your Trust in A UMI Performance Product!

www.umiperformance.com

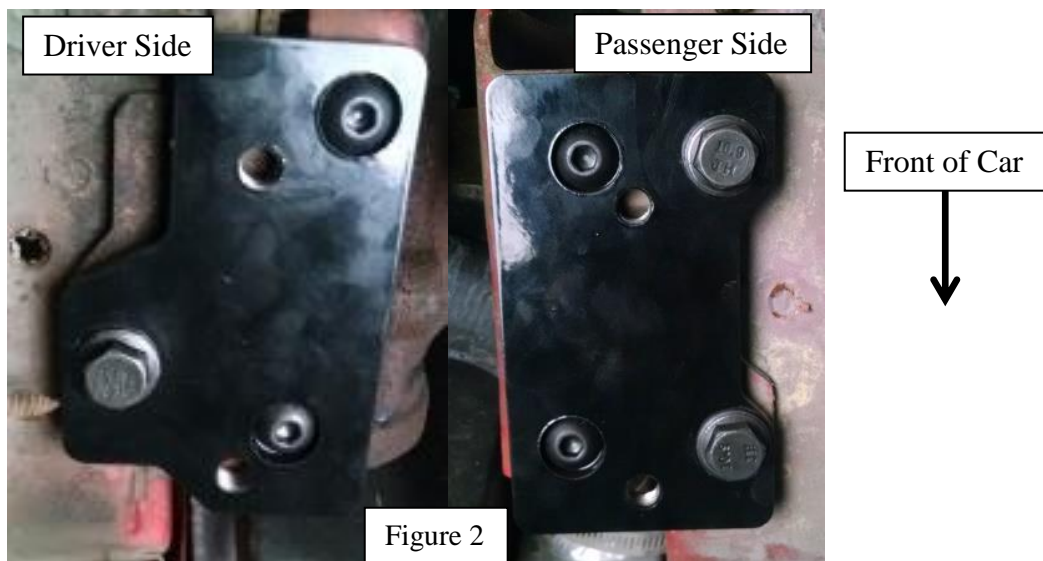
3. Once the old sway bar is removed, begin installation by removing the bolts as indicated in figure 1. The factory bracket may move slightly once these are removed.



4. If you are installing the sway bar **without** a wonderbar steering brace, follow steps 5 thru 7. If you are using a wonder bar such as UMI Part # 2030, follow steps 8 thru 10

No Wonder Bar Install

5. Install the Black relocation brackets against the factory sway bar mounting pad. See figure 2 for bracket placement. From the bottom of the car you will be able to see the counterbored holes on the bracket, and the threaded holes will be offset to the front of the car.
6. Install the m10x30 button head bolts included in the kit in the counterbored holes. Install the m10 x 35mm flange head bolt in the holes where you removed the bolts in step 3. The bolts supplied are longer than factory. You will not use the supplied U shaped spacers. Skip to step 11 to continue
7. Torque bolts to 40 ft/lbs.

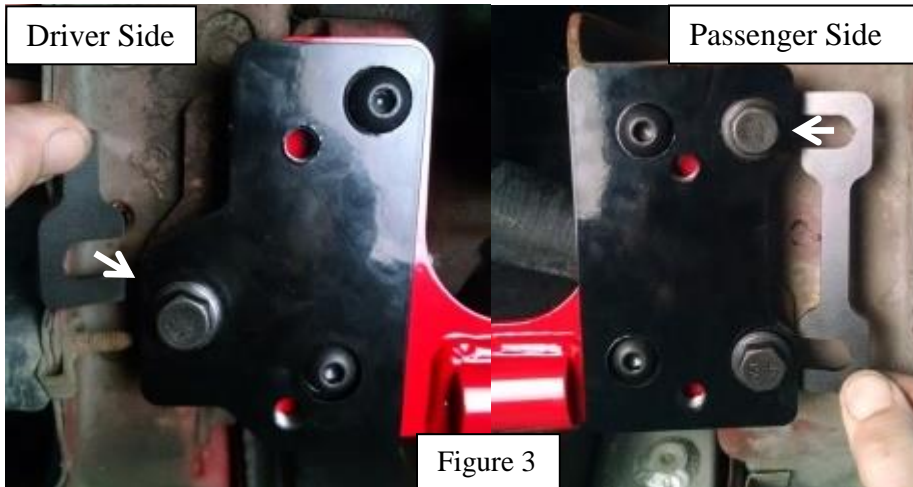


Thank you for Putting Your Trust in A UMI Performance Product!

www.umiperformance.com

Wonder Bar Install

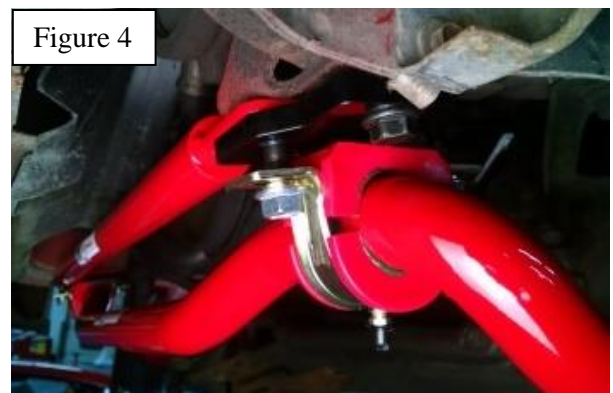
8. Install the wonderbar between the 2117 relocation bracket and the chassis. Loosely start the m10x30mm into the holes button head bolts in the counterbored holes. Install the m10 x 35mm flange head bolt in the holes where you removed the bolts in step 3.
9. Place the Single U shaped spacer under the Driverside Bracket. The double U shaped spacer goes under the Passenger Side. See figure 3 for photo.
Note: The spacers provided are the same thickness (3/16) as the UMI Part # 2030. If you have a wonderbar that is a different thickness, use washers to match the thickness of the bar (washers are not provided)



10. Torque Bolts to 40 ft/lbs.

All installations follow steps 11 thru

11. Install supplied studs into the threaded holes. Apply a small amount of blue locktight (not supplied) onto the threads into the bracket. The short side of the stud is screwed into the bracket. Tighten the stud by hand, it will fully tighten when the installing the nut for the sway bar
12. Install Sway bar bushings onto bar. It is advised to lightly grease the inside of the poly bushing before installation.
13. This step is easiest with assistance from a second person. Install Sway bar onto car. Install the clamshells onto the studs in the 2117 brackets, use the (4) m10 flange nuts included in the kit to secure. Center the bar side to side, then tighten nuts to 40 ft/lbs. Reference figure 4.



Thank you for Putting Your Trust in A UMI Performance Product!

www.umiperformance.com

14. Loosely install sway bar endlinks. Figure 5 shows proper order of assembly.

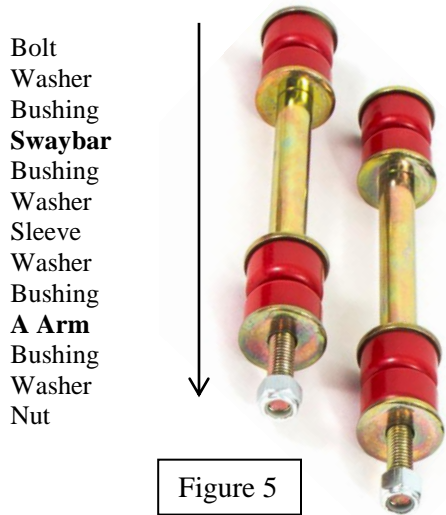


Figure 5

End Link Installation Tips -The bolt can be installed with the threaded end up or down. Washers must cup toward the bushings. The bushing nipple is intended to center the end link assembly in the sway bar and control arm mounting points. Have the vehicle at ride height when tightening end links for proper seating of the bushings. Use a 9/16" wrench and ratchet to tighten the assembly until the bushings start to bulge slightly (**Do not grease or over tighten!**). Check all clearances around brake lines, tie rods and control arms with a full turn of the wheels from left to right.

DISCLAIMER OF WARRANTY

THE PURCHASER ACCEPTS ALL RESPONSIBILITY FOR THE FINAL USE OF THE PRODUCTS PURCHASED AND SHALL HOLD UMI PERFORMANCE INCORPORATED AND ITS REPRESENTATIVES HARMLESS IN ANY LEGAL PROCEEDING ARISING FROM THE USE OF SUCH PRODUCTS.

UMI PERFORMANCE INCORPORATED DOES NOT WARRANT, GUARANTEE, OR MAKE ANY REPRESENTATION REGARDING THE USE, OR THE RESULT OF THE USE OF ANY PERFORMANCE PRODUCT MANUFACTURED OR DISTRIBUTED BY UMI PERFORMANCE INCORPORATED. PURCHASER ASSUMES THE ENTIRE RISK AS THE RESULT AND PERFORMANCE OBTAINED FROM THE INSTALLATION AND USE OF SAID PERFORMANCE PRODUCTS. UMI PERFORMANCE INCORPORATED ASSUMES NO RESPONSIBILITY FOR AND HEREBY DISCLAIMS ALL WARRANTIES, ORAL OR WRITTEN, EXPRESS OR IMPLIED INCLUDING WITHOUT LIMITATION, THE WARRANTIES OF MERCHANTABILITY AND OF FITNESS FOR A PARTICULAR PURPOSE.

ALL PARTS ARE WARRANTED TO BE FREE OF DEFECT

Item # 2117

1 3/8" Front Sway Bar
 1982-1992 GM F-body

UMI Performance Inc.
 Made in Pennsylvania, USA

Thank you for Putting Your Trust in A UMI Performance Product!

www.umiperformance.com