

1982 – 2002 GM F-Body Rear Weight Jack Kit
P/N# 2075



This kit is designed to be a direct replacement for standard rear coil springs on a factory rear axle. After installation, you will be able to fine tune the ride height and corner weights as you desire. Instructions for 2075-1 and 2075-2 are the same, the only difference is the provided spring rate.

Box Contents

Qty	Part #	Description
2	2065	Weight Jack Assemblies
2	H175B or H200B	5"x 10.5" Coil Springs
2		Coil Spring Isolator

Before installation, verify box contents are correct and read through instructions completely. Always ensure proper support when working under a vehicle. Use approved jack stands when using a floor jack. Use proper technique for securing your car while on a lift. Always use proper safety clothing and eye protection.

Tools required:

- Wrenches and Sockets
- Floor Jack or standing jack
- Drill / Drill Bit
- Cut Off Tool

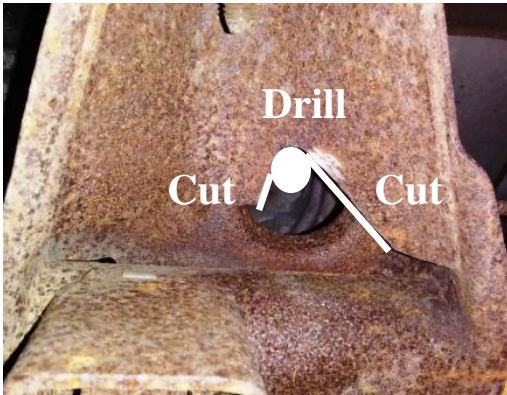


509 Hemlock St
Philipsburg, PA 16866
Ph- 814.343.6315 Fax- 814.343.6318
Installation Instructions
support@umiperformance.com
www.umiperformance.com

Installation

1. Raise car to a comfortable working height using the method of your choice. Follow applicable safety procedures. Support the car under the chassis, leaving the rear axle droop
2. Remove rear wheels.
3. Disconnect the lower Shock Mount and let rear droop. Use a floor jack to lower the axle
4. Remove the rear spring and top isolator. Set aside, you will not reuse this.
5. Modify the driver side gusset plate to allow clearance for the adjuster bolt. The passenger side on GM rear axles requires no modification. See pictures for clearance required
*Drill 3/8" hole and use cut off tool to remove part of gusset
6. Place the 2075 assembly inside the factory spring cups on both sides of axle. Rotate the assembly so that notch on the lower portion is toward the rear or the car. The plate is angled forward slightly to help align the spring when setting the car down.
7. Adjust the bucket by turning the adjuster screw with a 3/4" socket and ratchet. Lower the bucket to aid installation of the spring.
8. Install the spring with the provided isolator. Once in the car ensure the isolator is centered in the spring.
9. Raise axle up to allow reinstallation of the lower shock mount. The spring may be loose once the shock is installed depending on where the assembly is adjusted. Raising the adjuster screw will take up this slack
10. Adjust each side to an equal setting. This will be an initial setting that may need adjusted to get the desired ride height.
11. Reinstall wheels.
12. Lower car onto ground. *note, springs may make a small amount of noise when setting down as they seat into place. The top isolator is provided to dampen road noise when driving, same as original
13. Make ride height adjustments using a ratchet, extension, and 3/4" socket; turn the adjuster to raise or lower the car. 1 turn changes ride height approximately 1/8".
*The adjustments may not be equal side to side to make the car level. This is due to a difference in the corner weights of the car.

Maintenance Tip: Periodically cleaning dirt, rocks, and debris off of the weight jack threads and thrust bearing will extend the life of the assembly. Also, apply new extreme pressure grease on a yearly basis. threads and thrust bearing will also keep the assembly turning smoothly and reduce wear on the components.



Cut Driver Side gusset to allow adjuster screw clearance.



Driver Side 2075 installed – note access to adjuster bolt



Install Passenger side, align notch toward rear of car. Notch is denoted in picture by white dot



Install provided isolator on top of spring. This will go between the spring and body of car.



Highest recommended position of adjuster. Leave a minimum of 1 thread showing underneath the adjuster.



Completed Install



509 Hemlock St
Philipsburg, PA 16866
Ph- 814.343.6315 Fax- 814.343.6318
Installation Instructions
support@umiperformance.com
www.umiperformance.com

Item #2075

82 – 02 F-Body Weight Jack Kit

UMI Performance Inc.
Made in Philipsburg, PA - USA

DISCLAIMER OF WARRANTY

THE PURCHASER ACCEPTS ALL RESPONSIBILITY FOR THE FINAL USE OF THE PRODUCTS PURCHASED AND SHALL HOLD UMI PERFORMANCE INCORPORATED AND ITS REPRESENTATIVES HARMLESS IN ANY LEGAL PROCEEDING ARISING FROM THE USE OF SUCH PRODUCTS.

UMI PERFORMANCE INCORPORATED DOES NOT WARRANT, GUARANTEE, OR MAKE ANY REPRESENTATION REGARDING THE USE, OR THE RESULT OF THE USE OF ANY PERFORMANCE PRODUCT MANUFACTURED OR DISTRIBUTED BY UMI PERFORMANCE INCORPORATED. PURCHASER ASSUMES THE ENTIRE RISK AS THE RESULT AND PERFORMANCE OBTAINED FROM THE INSTALLATION AND USE OF SAID PERFORMANCE PRODUCTS. UMI PERFORMANCE INCORPORATED ASSUMES NO RESPONSIBILITY FOR AND HEREBY DISCLAIMS ALL WARRANTIES, ORAL OR WRITTEN, EXPRESS OR IMPLIED INCLUDING WITHOUT LIMITATION, THE WARRANTIES OF MERCHANTABILITY AND OF FITNESS FOR A PARTICULAR PURPOSE.

ALL PARTS ARE WARRANTED TO BE FREE OF DEFECT AT THE TIME OF PURCHASE. WARRANTY IS ONLY EXTENDED TO REPLACEMENT OF PARTS FROM UMI PERFORMANCE INCORPORATED AND DOES NOT COVER LABOR, TOWING OR ANY OTHER DIRECT OR INDIRECT COST. UMI PERFORMANCE INCORPORATED IS NOT RESPONSIBLE FOR ANY CONSEQUENTIAL DAMAGE, EXPENSE OR INJURY ARISING FROM THE USE, MISUSE OR IMPROPER INSTALLATION OF ANY PRODUCT MANUFACTURED AND/OR SOLD BY UMI PERFORMANCE INCORPORATED.