

WEB INSTALLATION

Belt webbing must have an unobstructed travel path. Allow a minimum 1-inch space around the belts in the seat opening for anticipated travel. Your belts will move in the direction of the impact. Make sure this area is clear of obstruction. All edges including any seat holes must have an edge guard to protect the webbing against abrasion and cuts.

Keep belts away or protected from sources of heat (i.e., exhaust headers and welding).



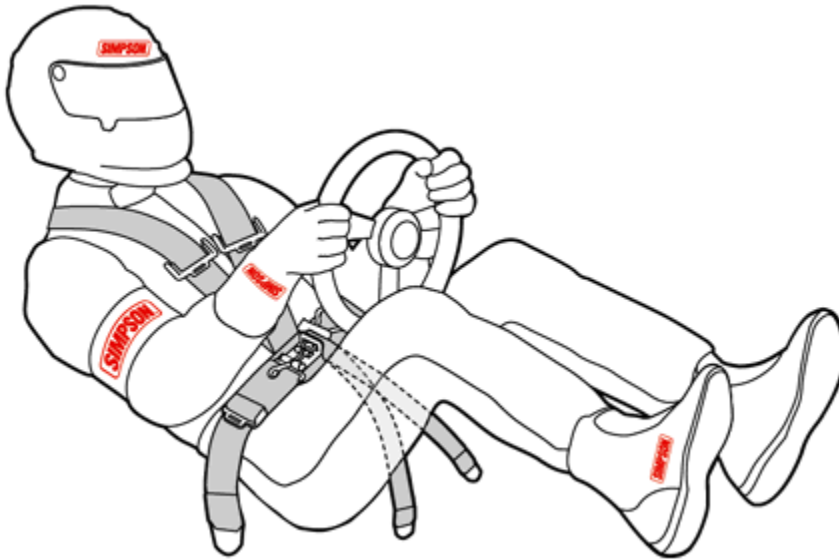
UNDER NO CIRCUMSTANCES ARE BOLTS INSERTED THROUGH BELT WEBBING ACCEPTABLE FOR MOUNTING.

“**LOCKING**” the 3-Bar Slide Adjuster shown in Steps 1 through 4 is VERY IMPORTANT. The 3-Bar Slide Adjuster must be located as close as possible to the Bolt-in bracket or Roll Bar (in Wrap Around design).

Become familiar with the installation, use and operation of your restraint system. Call Simpson at 1-800-654-7223 with any questions.

WARNING :

This article is sold without warranty expressed or implied. No warranty or representation is made as to this product's ability to protect the user from any injury or death. The user assumes that risk. The effectiveness, warranty and longevity of this equipment are directly related to the manner in which it is INSTALLED, USED, and/or MAINTAINED. THE USER ASSUMES THE RISK. No warranty or representation is made as to its ability to protect against serious injury or death, which might result from circumstances beyond the control of Simpson.



Mounting Brackets

Mounting brackets should be installed at an angle that is compatible with the direction of pull on the webbing under full load. Preferred mount is in a double shear with allowance for the bolt-in bracket to pivot and align toward the direction of the load as shown in Figure 1.

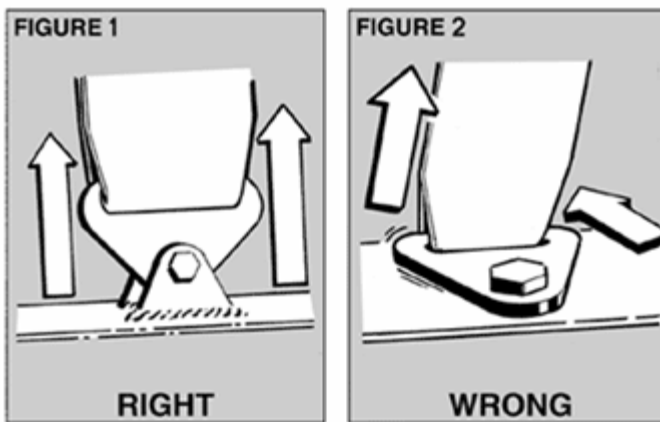


FIGURE 1 AND FIGURE 2

All mounting brackets should be attached directly to the frame or chassis of the car and installed to limit the driver's body travel both upward and forward. Do not weld around or near belts or belt hardware.

Minimum specification for bolts and washers to attach the seat belts, harnesses and anti-submarine belt hardware are Grade 8.

Wrap Around style mounts should have a provision to prevent lateral or side-to-side movement.

DO NOT MOUNT TO THE SHEET METAL FLOORBOARD. ALL MOUNTS SHOULD HOLD A MINIMUM OF 3,000 LBS. FORCE.

WARNING :

This article is sold without warranty expressed or implied. No warranty or representation is made as to this product's ability to protect the user from any injury or death. The user assumes that risk. The effectiveness, warranty and longevity of this equipment are directly related to the manner in which it is INSTALLED, USED, and/or MAINTAINED. THE USER ASSUMES THE RISK. No warranty or representation is made as to its ability to protect against serious injury or death, which might result from circumstances beyond the control of Simpson