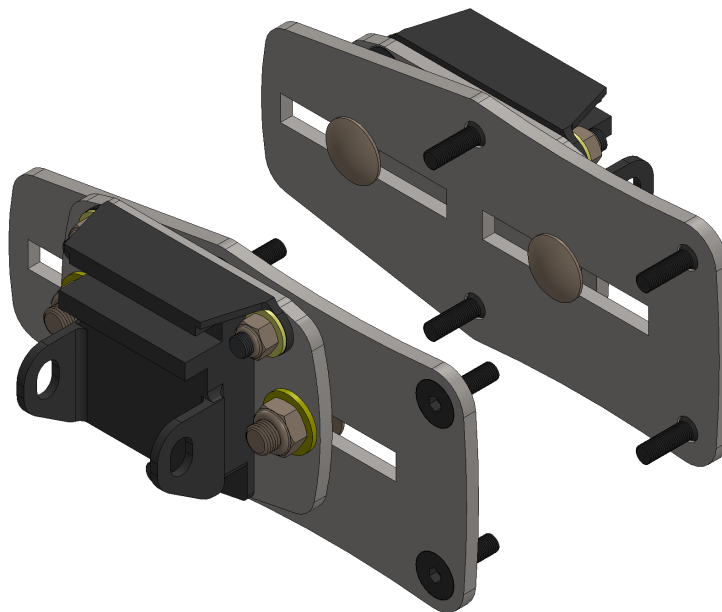


#LS1-KU - Installation Instructions

for Adjustable LS Engine Adapter Brackets



Parts List:

- 2 ea Engine Bracket
- 2 ea Mount Bracket
- 4 ea 1/2 Carriage Bolt
- 4 ea 1/2 Lock Nut
- 4 ea 1/2 Flat Washer
- 6 ea 3/8 Counter Sink Bolt
- 6 ea 3/8 Lock Nut
- 6 ea 3/8 Flat Washer
- 8 ea 10mm Counter Sink Screw

Notes:

Due to variations between different manufactures engine mounts some modifications may be necessary:
If the bump on the back side of the mount interferes with the adapter you may need to remove a portion of the bump; a grinder works well for this.

Instructions:

1. Insert 3 of the 3/8" counter sink bolts into each of the mount brackets. The bolts will go into the 3 counter sink holes in each bracket. The head of the bolts will be flush with the face of the bracket. Refer to the illustration as needed.
2. Attach the 3 bolt mount to the mount bracket with the 3 counter sink bolts, 3 of the 3/8" flat washers, and 3 lock nuts.

3. Temporally attach the carriage bolts to the engine brackets. The heads of the carriage bolts will be opposite of the counter sink holes on the bracket.
4. Using 4 of the 10mm counter sink screws attach the engine brackets to the engine block.
5. Attach the mount brackets to the engine brackets. Use the carriage bolts, 1/2 flat washers, and 1/2 lock nuts.
6. Tighten the carriage bolts after the mounts are adjusted into position.

GENERAL TORQUE SPECIFICATIONS:

| | | | | | |
|-------|---------|----------|-------|---------|----------|
| 1/4" | grade 5 | 10lb/ft | 1/4" | grade 8 | 14lb/ft |
| 5/16" | grade 5 | 19lb/ft | 5/16" | grade 8 | 29lb/ft |
| 3/8" | grade 5 | 33lb/ft | 3/8" | grade 8 | 47lb/ft |
| 7/16" | grade 5 | 54lb/ft | 7/16" | grade 8 | 78lb/ft |
| 1/2" | grade 5 | 78lb/ft | 1/2" | grade 8 | 119lb/ft |
| 9/16" | grade 5 | 114lb/ft | 9/16" | grade 8 | 169lb/ft |
| 5/8" | grade 5 | 154lb/ft | 5/8" | grade 8 | 230lb/ft |

NOTE: With 18" and larger wheels we recommend 1/2" wheel studs. The larger the wheel diameter, the greater the force is on the wheel studs. Please inquire about replacement wheel stud kits available from CPP.

© Classic Performance Products, Inc. 2013
All rights reserved. This document may not be reproduced without prior written permission of CPP.