

INSTRUCTIONS

'37-'48 FORD SPINDLE 5 1/2" B.C. BRAKE KIT

910-31909
COMPLETE KIT

916-31909
BRACKET KIT ONLY

©Speedway Motors, Inc. March 2007

THIS KIT WILL NOT WORK WITH FORGED AFTER MARKET STEERING ARMS!

This kit will work with spindles having original steering arms or with flat plate steering arms.
Wheels must have a 3 7/16" center hole and be designed for disc brake applications.

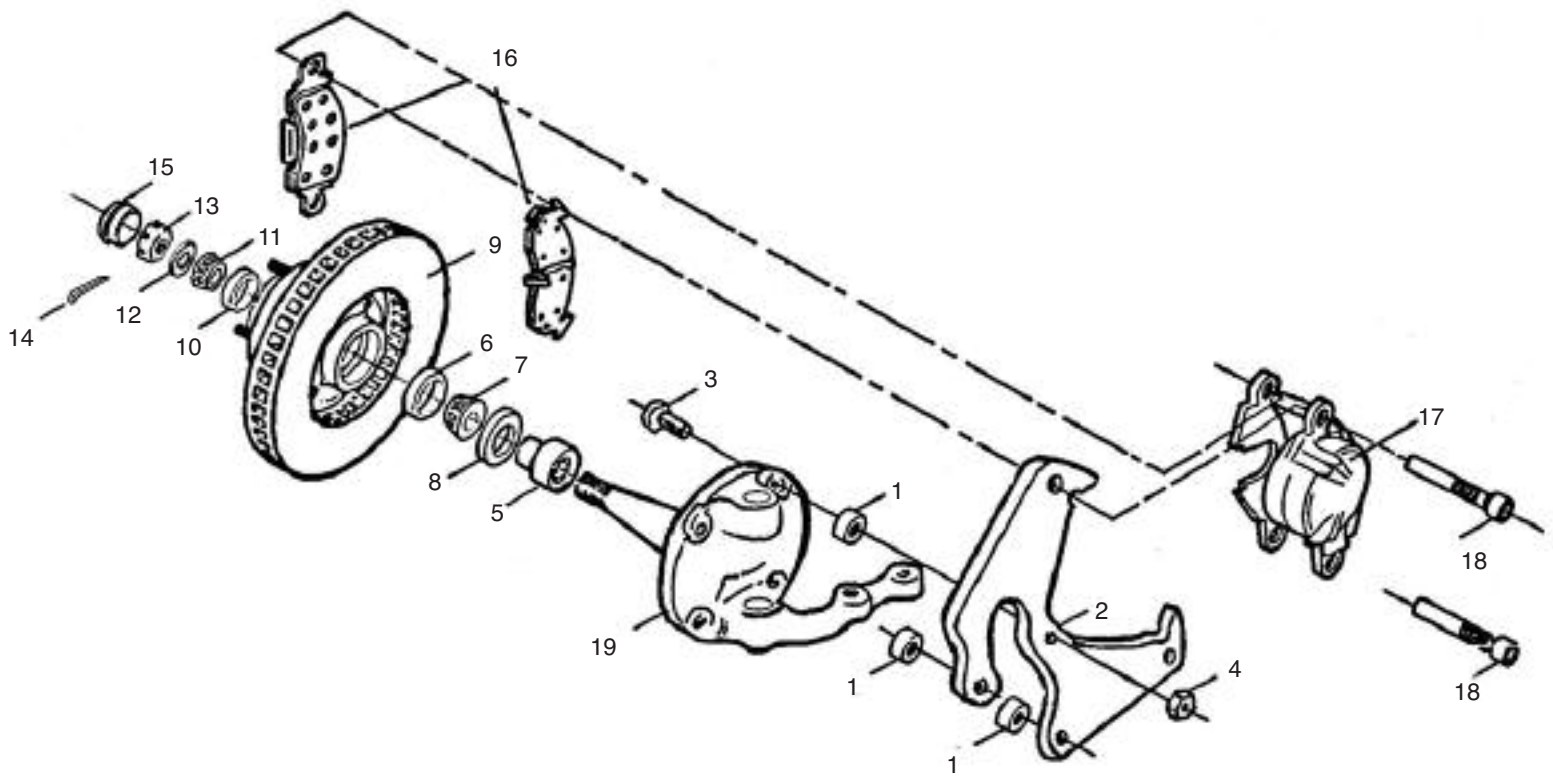
**PLEASE READ INSTRUCTIONS COMPLETELY
BEFORE STARTING YOUR INSTALLATION!**

This disc brake kit installs '73-'77 Ford 1/2 ton 2WD pickup rotors and '71-'76 Chevy Impala calipers on '37-'48 Ford spindles.

Parts List			
Index No.	Description	Part Number	Quantity
*	Hardware kit	916-31909-2	1
1	Bracket spacers 5/8"	In hardware kit	6
1	Bracket spacers 1/4"	In hardware kit	4
2*	Caliper mounting brackets	916-31909-1	2
3	1/2" -20x2" GR 8 bolts	In hardware kit	6
	1/2" -20x1 1/4" GR 8 bolts	In hardware kit	2
4	1/2" -20 Locking nut	In hardware kit	6
5*	Bearing adapters	910-09301	2
6	Inner bearing cup	Supplied in rotor	2
7	Inner bearing cone	912-TL68149	2
8	Grease seal	912-S18580	2
9	5 1/2" bolt circle rotors	910-31068	2
10	Outer bearing cup	912-TLM11910	2
11	Outer bearing cone	912-TLM11949	2
16	Brake pad (set)	919-3382	1
17	'71-'76 Chevy Impala caliper-L	910-31044-L	1
17	'71-'76 Chevy Impala caliper-R	910-31044-R	1
18	Caliper bolts	835-2300542	4
Other Parts needed:			
**	Spindle nut kit	910-616004	1
12	Spindle washer	In spindle nut kit	2
13	Spindle nut	In spindle nut kit	2
14	Cotter pin	In spindle nut kit	2
15**	Dust cap (pr)	550-2492	1
19**	'37-'48' Ford spindle (pr)	916-32104	1
**	16" Stainless steel brake line kit (7/16-20 thread for speedway calipers)	617-8562	1
* bracket kit parts only			
** not included			

BRAKE INSTALLATION ALERT: The selection and installation of brake components should only be done by personnel experienced in the proper installation and operation of braking systems. The installer must use his/her own discretion to determine the suitability of the brake components and brake kits for every particular application

Speedway Motors, Inc. makes no warranties, either expressed or implied, including any warranty of merchantability or fitness for a particular purpose, other than those contained in its current catalog or website with respect to the goods identified on the face of the invoice. There is no warranty expressed or implied as to whether the goods sold hereby will protect the purchaser or ultimate user of such goods from injury or death.



1. Using the parts list, double check that you received all the parts in this kit. If there are any missing parts, please contact the customer service department.
2. Carefully install the bearing adapter (#5) onto the spindle, making sure the flanged side goes toward the spindle and is fully seated. You can use a press to install the adaptor on the spindle or the adaptor can be heated at 400 degrees for 20 minutes then slid onto the spindle. Allow to cool slowly at room temperature.
3. Remove the stock Ford outer bearing race from the rotor. Install the new bearing race (#10) supplied in the kit. **NOTE:** The stock outer bearing race **WILL NOT WORK WITH THIS KIT**. It must be replaced with the new bearing race supplied in the kit.
4. Bolt the caliper bracket (#2) to the spindle. The bracket mounts on the axle side of the spindle and the caliper mounts to the rear. From the wheel side of the spindle, install the three 1/2"-20x2" GR 8 hex head bolts (#3), followed by the 5/8" spacer (#1), the caliper bracket (#2). Secure with the three 1/2"-20 locking nuts (#4) and torque to 38-57 ft lbs.

If you are using bolt on flat plate steering arms, use the 1/4" spacers supplied on both lower mounting holes. On the lower rear mounting hole, install the 1/2"-20x2" bolt through the spindle followed by the 1/4" spacer, the steering arm and then the caliper bracket. Secure with the 1/2"-20 locking nut. Use the 1/2"-20x1 1/4" GR 8 bolt and locking nut to mount the front of the steering arm to the spindle. Torque to 38-57 ft. lbs.

5. Pack and install the inner bearings (#7) with fresh disc brake bearing grease and install the grease seal (#8). The seals must be installed straight. A seal installation tool works well for this.

6. Install the rotor (#9) on to the spindle, pack and install the outer bearing (#11). Install the spindle washer (#12) and spindle nut (#13). Adjust the bearing preload as normal. Install the cotter pin (#14) and dust cap (#15).
7. Install the brake pads (#16) into the calipers (#17) and install the calipers on to the mounting brackets (#2) with the bleeders pointing up. Only use the correct GM mounting bolts (#18).
8. Install new brake lines making sure you check that the lines have clearance through the entire suspension travel and turning radius. Bleed the system as normal.
9. Before operating the vehicle, test the brakes under controlled conditions. Make several stops in a safe area from low speeds and gradually work up to operating speeds.

NOTE: Some wheels will not clear the snout on the rotors. Wheels must have a $3\frac{7}{16}$ " center hole and be designed for disc brake applications to work with this kit.

IMPORTANT

DISCLAIMER In an effort to offer our customers the low prices, quick service and great value, Speedway Motors reserves the right to change suppliers, specifications, colors, prices, materials. Each of the previous items is subject to change without notice. Speedway is not responsible for any typographical errors or misinterpretations. Quantities are limited on some items.

WARRANTY DISCLAIMER The purchaser understands and recognizes that racing parts, specialized street rod equipment, and all parts and services sold by Speedway Motors, Inc. are exposed to many and varied conditions due to the manner in which they are installed and used. Speedway Motors, Inc. makes no warranties, either express or implied, including any warranty of merchantability or fitness for a particular purpose other than those contained in its current catalog with respect to the goods identified on the face of the invoice. There is no warranty expressed or implied as to whether the goods sold hereby will protect purchaser or ultimate user of such goods from injury or death. Speedway Motors assumes no liability after this period.

DAMAGE CLAIMS Always inspect your package upon delivery. Inspect all packages in the presence of the delivery driver. The driver must note any damage. Ask the driver the Carrier's procedures for handling damage claims. You must hold the original box, packing material and damaged merchandise for inspection or the carrier will not honor the claim. Notify Speedway Motors customer service department for instructions on returning damaged goods. Speedway is not responsible if no notification is given within 5 days of receipt.

SHORTAGES Always check the contents of your delivery to insure all the parts that you ordered were received. Please read the invoice. Double check all packing materials, small items may be wrapped inside with these products. Shortages may occur from damage to the box, so save all packing materials. Inspect the box for holes that would allow parts to fall out. If you are missing any item(s) be sure to check your invoice for back orders or canceled items before calling the customer service department. If Speedway has to split a shipment into multiple boxes, packages may be delivered on different days. You need to contact the customer service department within 5 days of delivery to assure the prompt replacement. Speedway Motors assumes no liability after this period.

REFUSALS All refused COD customers will be billed a 15% restocking charge plus freight to and from the destination! If you have questions please contact Speedway's customer service department.

WARRANTY CLAIMS If an item has a manufacturer's warranty as being free from defects we will exchange only. If the item has been used and you are requesting warranty work, this may take up to 30 days as warranty work is done by the manufacturer NOT Speedway Motors. If you have any questions please contact customer service.

RETURNS Speedway wants you to be satisfied with your purchase. If within 30 days after you receive your shipment you are not satisfied, you may return the item for refund or exchange. All exchanged or returned merchandise must be in original factory condition with no modifications or alterations. Returned merchandise must include all packaging materials, warranty cards, manuals, and accessories. If the items being returned need to be repackaged there will be a re-packing charge. Repack the item in a sturdy box and include a copy of your invoice and complete the form on the back of the invoice. You must ship orders back **PRE-PAID. WE DO NOT ACCEPT COD SHIPMENTS.** All exchanges need to have reshipping charges included. Items that are returned after 30 days are subject to 15% restocking charges. All fiberglass returned will have 15% restocking charge. No returns on electrical parts, video tapes, and books. Absolutely no returns on special order or close out merchandise.

FREE CATALOGS Speedway Motors offers FREE catalogs for Race, Street, Sprint and Midget, Sport Compact and Pedal Car restoration.

**Some items are not legal for sale or use in California on pollution controlled motor vehicles. These items are legal in California for racing vehicles only which may never be used upon a highway.



Speedway Motors Inc., P.O. Box 81906
Lincoln, NE 68501 (402) 323-3200
www.speedwaymotors.com

©Speedway Motors, Inc. 2007