

INSTRUCTIONS

911-35311

UNIVERSAL HIDDEN DOOR HINGES

For hidden hinges to work properly, a couple of important facts should be kept in mind.

1. When installed, the hinge pins (pivot centers) should be kept in line both front to back (Fig.1) and side to side (Fig. 2). If they are in line, the hinges will be square to one another in both the closed position (Fig. 3) and open position (Fig.4). The hinge receivers may be tilted in the door post if needed; such as in a door post that leans as long as the hinge pins are still kept in line with each other. A good reference point is to keep the receiver tubes the same distance from the inside door jam edge. This line is usually straight (Fig.5).
2. The receivers should be mounted in a position that allows the hinge pins to be as close to the inner body skin as possible (Fig. 6) (this allows the door to clear the door post when the door swings open) while at the same time placing the hinge where it will be recessed in the door enough to clear the upholstery panel. The hinge needs to be recessed at least flush (3/8 deep) to allow upholstery panel to lay flat. In some cars with wide door posts this will not allow the hinge pins to be placed close to the inner body skin unless the hinges are recessed more than flush. The hinge may be recessed as much as possible as long as it clears the glass inside the door. In some cases the receiver may be angled in the door post to allow the hinge pins to be placed over close to the inner body skin (Fig. 7). It may be necessary also to bend the hinge slightly where it leaves the receiver to correspond with the angle of the inner door skin when the door is closed (Fig. 8).

Mount the receiver in the door post with the notch in the receiver even with the door post skin. The excess receiver that sticks out allows grinding the receiver even with the face of the door post after you have it positioned the receiver tube at the angle you want it (Fig. 9).

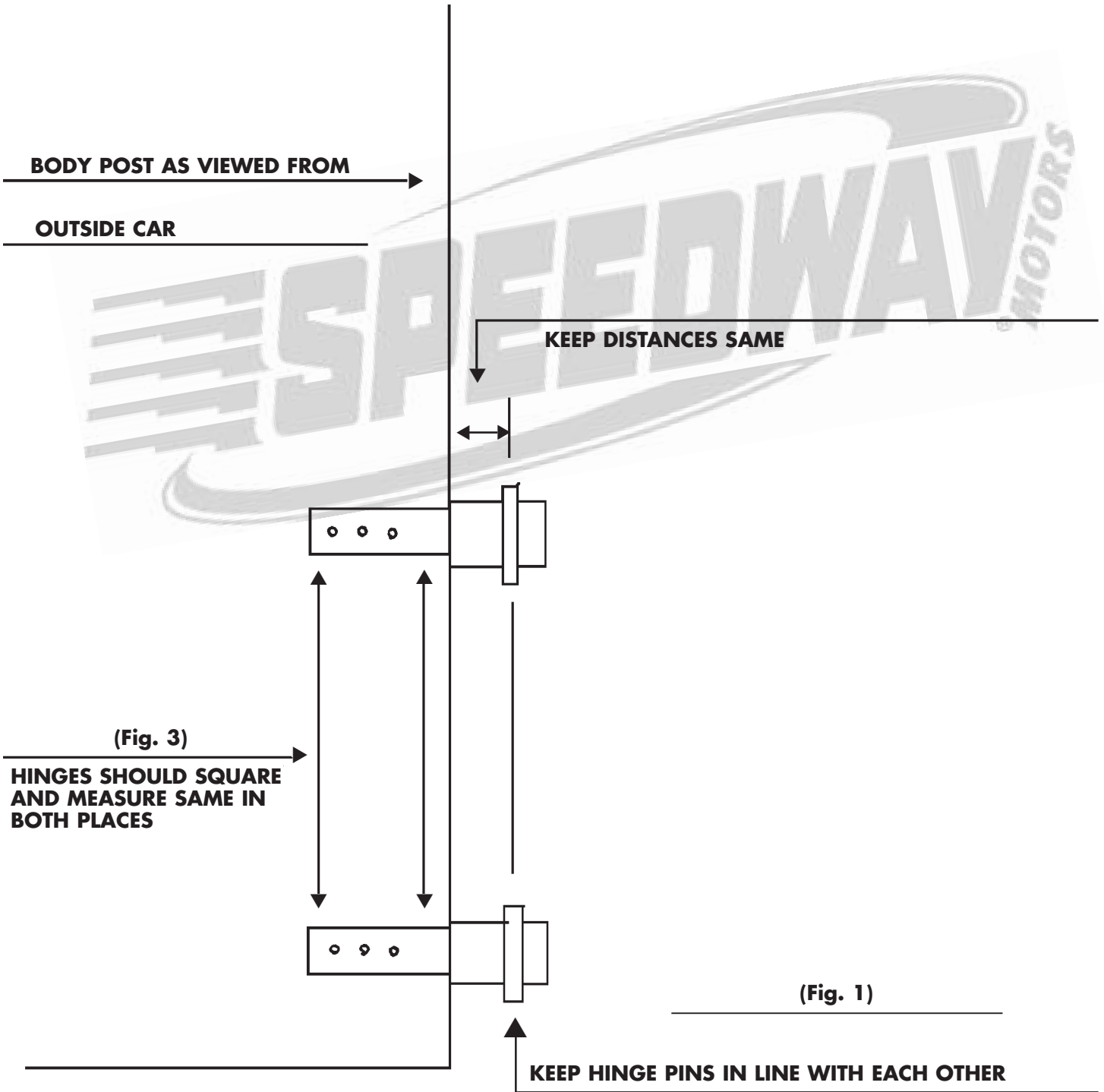
Mount the receivers as far apart as room allows. This will make the door more stable. As with all hinge kits, some internal bracing may need to be in the door to stiffen the door skin and keep it from flexing. The stiffer the mounting points, the more solid the door will feel mounted.

The instructions may not apply exactly to all cars. Some cars may differ and require custom installation by the installer but the principles will remain the same.

Speedway Motors Inc., P.O. Box 81906
Lincoln, NE 68501 (402) 323-3200
www.speedwaymotors.com



CLOSED POSITION



OPEN POSITION

HINGES MOUNTED LEVEL WITH GROUND (DOOR POSTS STRAIGHT UP) GOOD REFERENCE POINT IS TO KEEP HINGE RECEIVERS PARALLEL WITH INSIDE DOOR POST EDGE - THIS EDGE IS USUALLY STRAIGHT.

INNER DOOR POST

(Fig. 5)

KEEP DISTANCES APPROXIMATELY THE SAME

KEEP HINGE PINS IN LINE WITH EACH OTHER

(Fig. 2)

POSITION HINGE PINS CLOSE TO INNER BODY SKIN

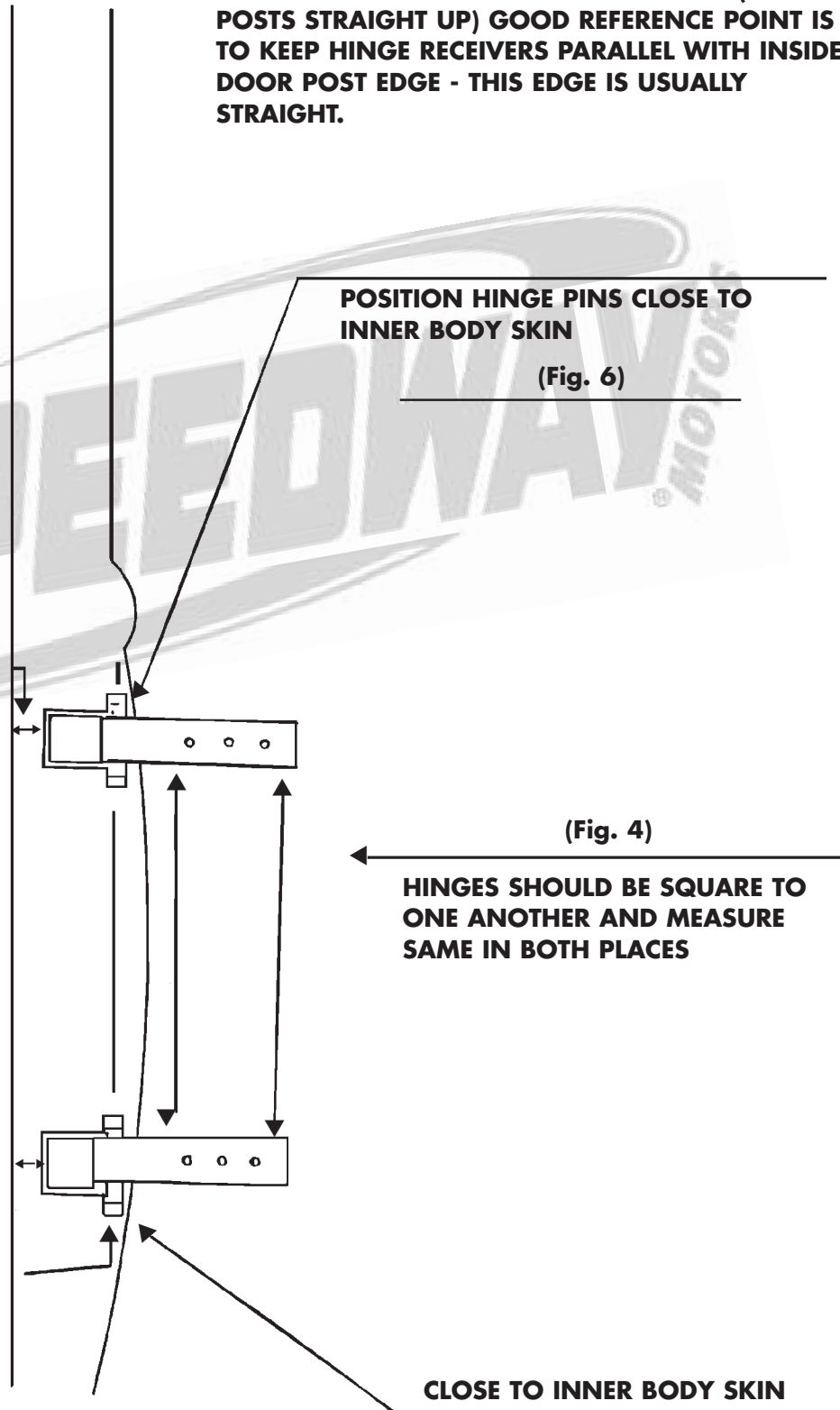
(Fig. 6)

(Fig. 4)

HINGES SHOULD BE SQUARE TO ONE ANOTHER AND MEASURE SAME IN BOTH PLACES

CLOSE TO INNER BODY SKIN

(Fig. 6)



OPEN POSITION

HINGES MOUNTED ANGLED DOWN SLIGHTLY (DOOR POST LEANS) GOOD REFERENCE IS TO KEEP HINGE RECEIVERS PARALLEL WITH INSIDE DOOR POST EDGE - THIS EDGE IS USUALLY STRAIGHT.

POSITION HINGE PINS CLOSE TO INNER BODY SKIN

INNER DOOR POST

(Fig. 5)

KEEP DISTANCES APPROXIMATELY THE SAME

(Fig. 6)

(Fig. 4)

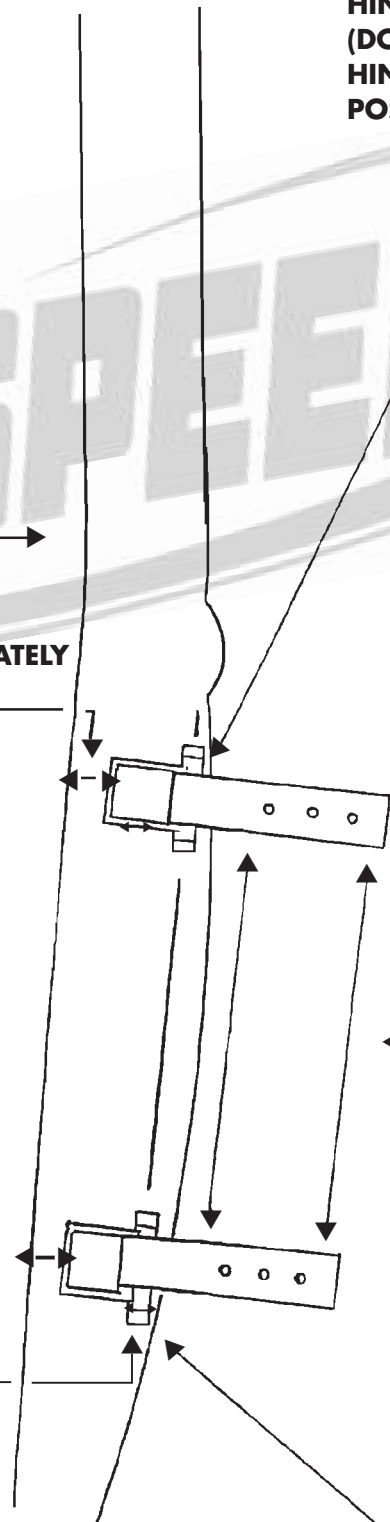
HINGES SHOULD BE SQUARE TO ONE ANOTHER AND MEASURE SAME IN BOTH PLACES

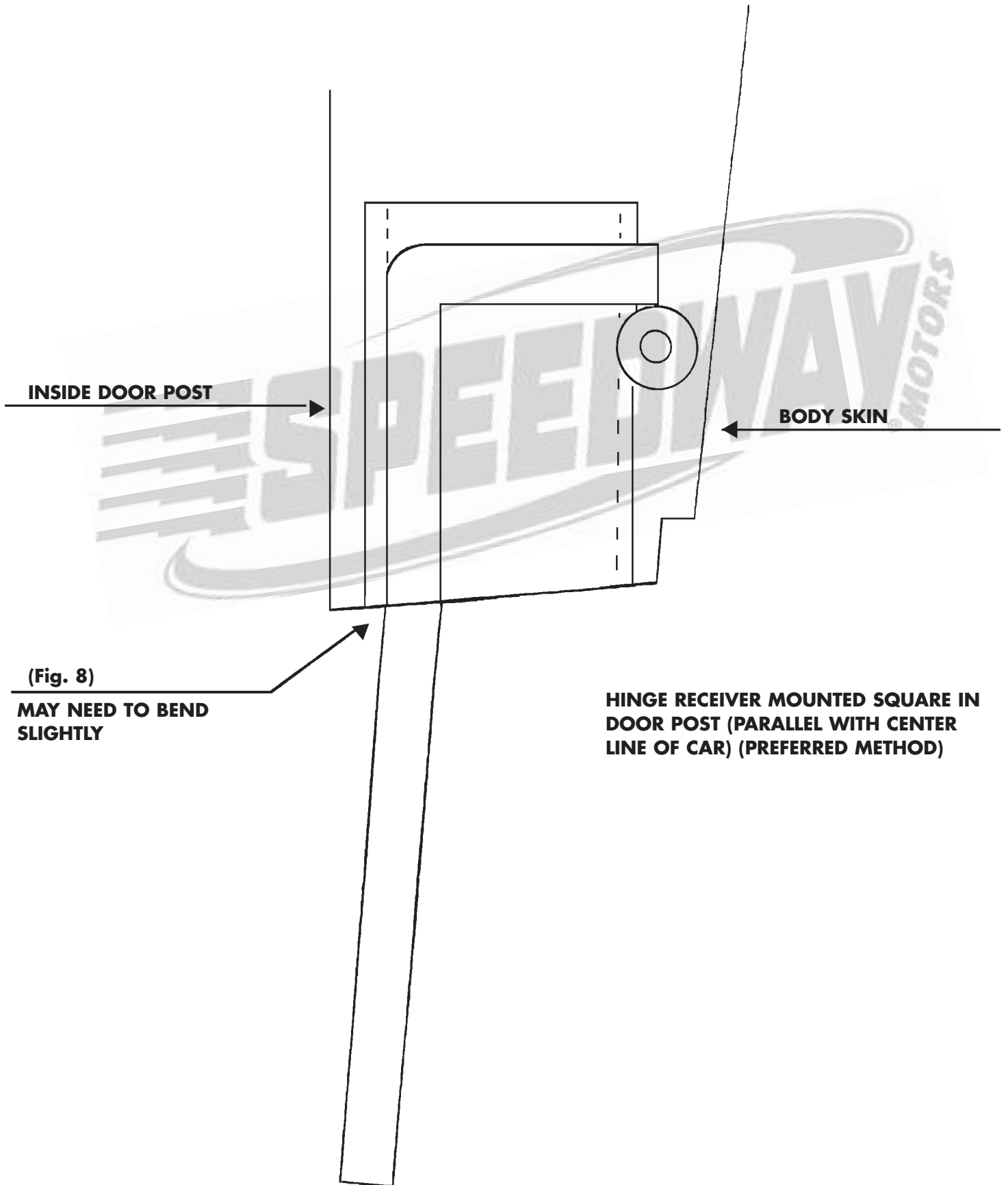
(Fig. 2)

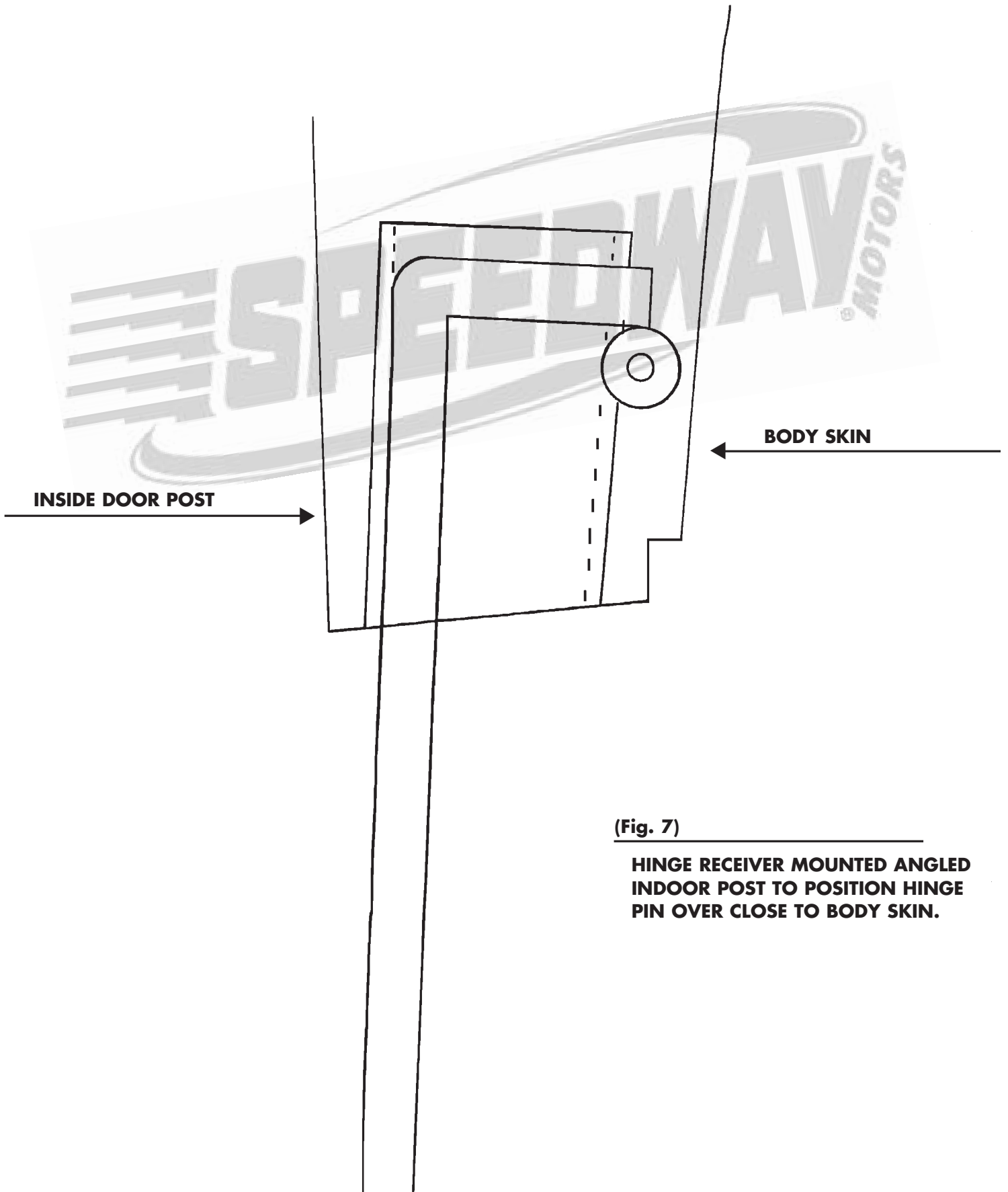
KEEP HINGE PINS IN LINE WITH EACH OTHER

CLOSE TO INNER BODY SKIN

(Fig. 6)



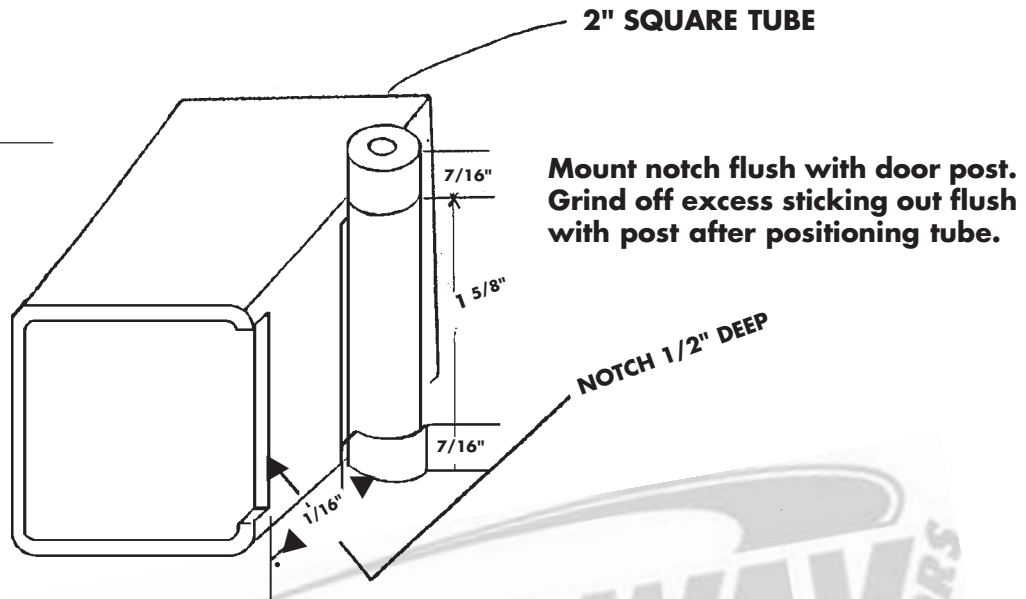




(Fig. 7)

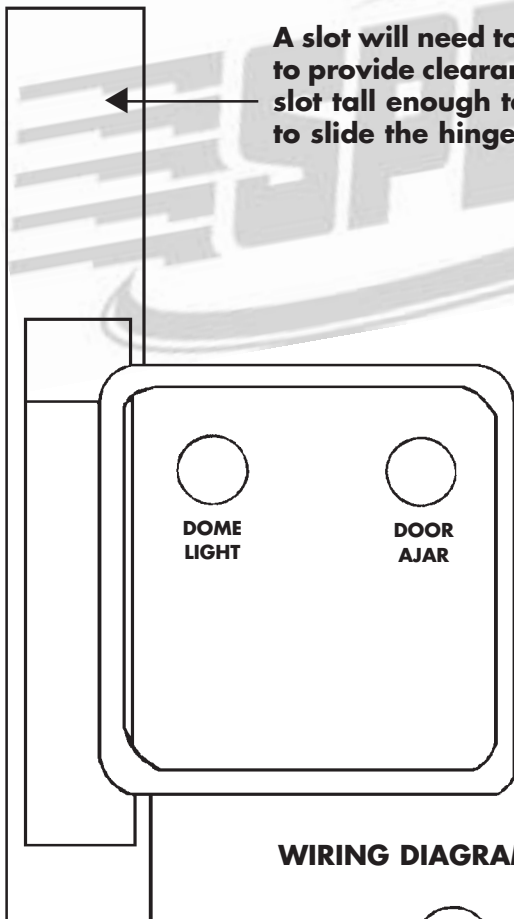
**HINGE RECEIVER MOUNTED ANGLED
INDOOR POST TO POSITION HINGE
PIN OVER CLOSE TO BODY SKIN.**

Fig. 9



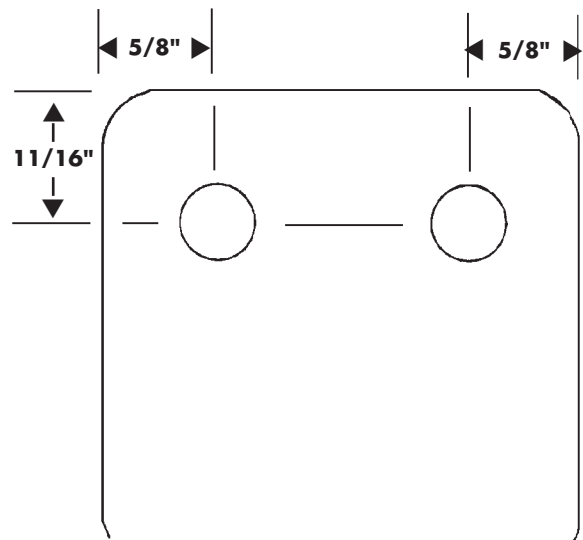
A slot will need to be cut in the backside of some door posts to provide clearance for the hinge pin and bushings. Cut the slot tall enough to be able to slide the hinge bolt in.

Holes are not drilled in the switch plates because some people will not want to hook up any switches. Drill holes in the switch plates for the switches you want to use. Use the pattern shown below and mount the switches as shown to the left. Adjust the door ajar switch so the light comes on when the door latch opens to the safety catch. Adjust the dome light switch so that the dome light comes on when the latch becomes fully open. Be careful not to bottom the switches out with the hinge when closing the door. Tack weld the switch plate to the back of the hinge tube after installing the hinge tubes in the door post.



From fused power source
To dome light/burglar system

From fused power source
To door ajar light/buzzer



INSTALLATION OF HINGES

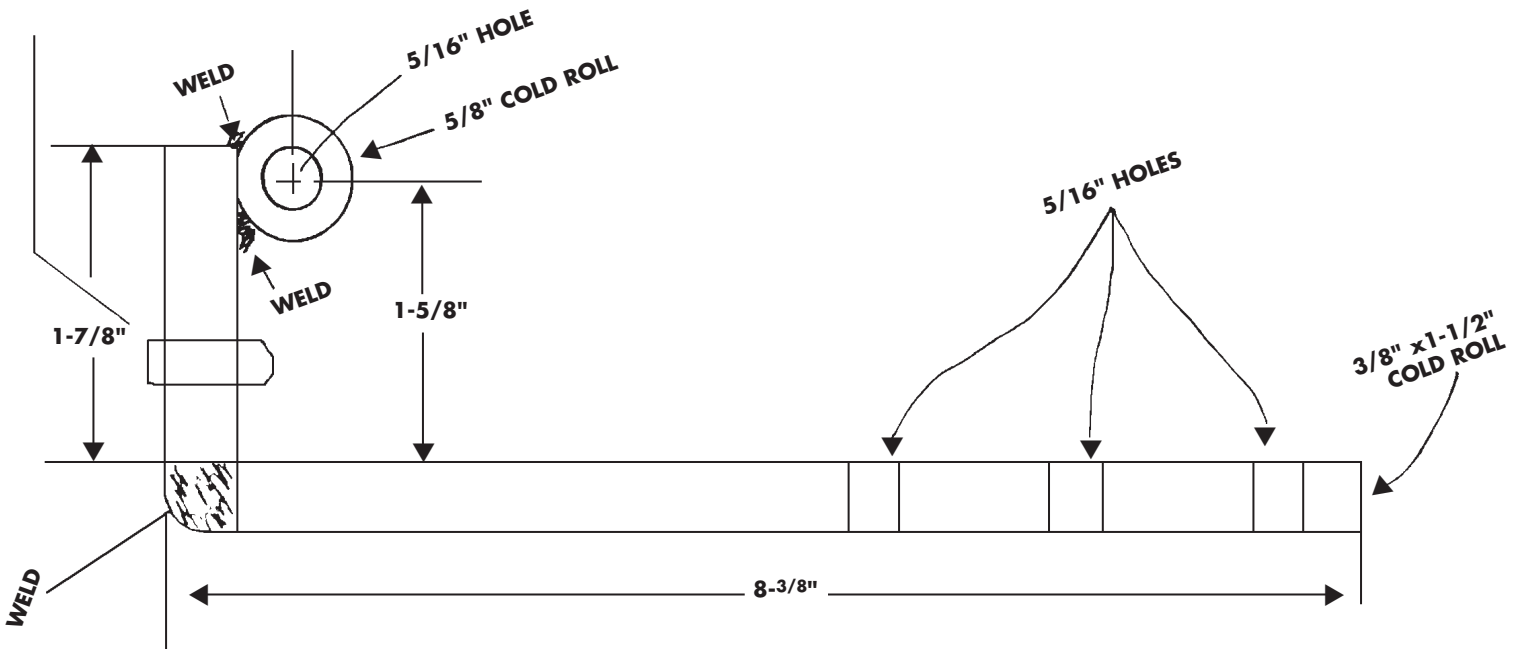
After cutting the holes in the door posts for the receiver tubes, remove the hinge pins and slide a long 5/16" rod through both tubes to line up the hinge pin centers. Tack weld a steel strip to the back side of the tubes to hold them the same distance apart as the holes you cut in the door posts. This will hold the tubes in line and allow you to remove the 5/16" rod and slide the 2 tubes in the door as a unit. After tack welding the tubes in the door post, remove the steel strip and finish mounting the hinges in the door and reassemble the hinge pins and make sure everything works before finish welding.

When installing the recesses in the door skin, drill the screw holes oversize so that the door can be shifted for alignment before tightening the screws.

On most cars, the bottom hinge pin will almost touch the body skin. The top hinge pin will be approximately 1/2 to 3/4 inches away from the body skin, but this will vary from car to car.

DOOR STOP

If needed, a set screw can be installed in the hinge to act as a door stop by hitting the receiver tube when the door opens. A hole will need to be drilled and tapped as shown and a set screw installed. In many installations, the hinge will hit the tube and stop the door without need for the set screw.



IMPORTANT

DISCLAIMER In an effort to offer our customers the low prices, quick service and great value, Speedway Motors reserves the right to change suppliers, specifications, colors, prices, materials. Each of the previous items is subject to change without notice. Speedway is not responsible for any typographical errors or misinterpretations. Quantities are limited on some items.

WARRANTY DISCLAIMER The purchaser understands and recognizes that racing parts, specialized street rod equipment, and all parts and services sold by Speedway Motors, Inc. are exposed to many and varied conditions due to the manner in which they are installed and used. Speedway Motors, Inc. makes no warranties, either express or implied, including any warranty of merchantability or fitness for a particular purpose other than those contained in its current catalog with respect to the goods identified on the face of the invoice. There is no warranty expressed or implied as to whether the goods sold hereby will protect purchaser or ultimate user of such goods from injury or death. Speedway Motors assumes no liability after this period.

DAMAGE CLAIMS Always inspect your package upon delivery. Inspect all packages in the presence of the delivery driver. The driver must note any damage. Ask the driver the Carrier's procedures for handling damage claims. You must hold the original box, packing material and damaged merchandise for inspection or the carrier will not honor the claim. Notify Speedway Motors customer service department for instructions on returning damaged goods. Speedway is not responsible if no notification is given within 5 days of receipt.

SHORTAGES Always check the contents of your delivery to insure all the parts that you ordered were received. Please read the invoice. Double check all packing materials, small items may be wrapped inside with these products. Shortages may occur from damage to the box, so save all packing materials. Inspect the box for holes that would allow parts to fall out. If you are missing any item(s) be sure to check your invoice for back orders or canceled items before calling the customer service department. If Speedway has to split a shipment into multiple boxes, packages may be delivered on different days. You need to contact the customer service department within 5 days of delivery to assure the prompt replacement. Speedway Motors assumes no liability after this period.

REFUSALS All refused COD customers will be billed a 15% restocking charge plus freight to and from the destination! If you have questions please contact Speedway's customer service department.

WARRANTY CLAIMS If an item has a manufacturer's warranty as being free from defects we will exchange only. If the item has been used and you are requesting warranty work, this may take up to 30 days as warranty work is done by the manufacturer NOT Speedway Motors. If you have any questions please contact customer service.

RETURNS Speedway wants you to be satisfied with your purchase. If within 30 days after you receive your shipment you are not satisfied, you may return the item for refund or exchange. All exchanged or returned merchandise must be in original factory condition with no modifications or alterations. Returned merchandise must include all packaging materials, warranty cards, manuals, and accessories. If the items being returned need to be repackaged there will be a re-packing charge. Re-pack the item in a sturdy box and include a copy of your invoice and complete the form on the back of the invoice. You must ship orders back **PRE-PAID. WE DO NOT ACCEPT COD SHIPMENTS.** All exchanges need to have reshipping charges included. Items that are returned after 30 days are subject to 15% restocking charges. All fiberglass returned will have 15% restocking charge. No returns on electrical parts, video tapes, and books. Absolutely no returns on special order or close out merchandise.

FREE CATALOGS Speedway Motors offers FREE catalogs for Race, Street, Sprint and Midget, Sport Compact and Pedal Car restoration.

**Some items are not legal for sale or use in California on pollution controlled motor vehicles. These items are legal in California for racing vehicles only which may never be used upon a highway.

Speedway Motors Inc., P.O. Box 81906
Lincoln, NE 68501 (402) 323-3200
www.speedwaymotors.com



©Speedway Motors, Inc. 2007