

# INSTRUCTIONS

**910-11589**

© July 2009, Speedway Motors, Inc.

## Installation of Rochester 2 G Tri-Power Base Kit Modifications to center (primary) carb

1) Remove, disassemble, and clean carb as you would for a normal rebuild.

**NOTE: Refer to the enclosed exploded view for proper part placement and nomenclature. This kit does not include all components listed in the illustration.**

2) To install the extended throttle shaft, start by looking closely at the old throttle blades in the baseplate. Note how they seat in the throttle bore and the orientation of the bevel on the edge of the throttle blades. Remove the screws securing the throttle blades to the throttle shaft (in some applications where the end of the throttle shaft screw has been peened over it may be necessary to use a small file to remove peened portion of screw flush with throttle shaft), and remove blades, then slide throttle shaft out of baseplate.

3) Grind off peened end of old throttle shaft which secures it to the throttle arm. Remove throttle arm. Install throttle arm on double D end of new extended throttle shaft and secure with washer and screw. Use Loctite on screw to prevent it from working loose.

4) Insert the new throttle shaft into the baseplate. Install the new throttle blades in the throttle shaft, recalling your notes from disassembly. Use a dab of Loctite on all of the throttle blade screws and install all 4 screws loosely. While holding light pressure on the throttle arm toward the throttle closed position, manipulate the throttle blades until you have a positive seal all around both throttle blades, tighten all 4 screws in this position. Operate the throttle arm to wide open throttle and back to idle and verify that blades close fully, and open 90 degrees at wide open throttle, with no sticking or binding.

5) Remove the 3 screws from the venturi booster cluster, noting that the long center screw has a hard fiber seal washer.

6) Remove the small idle jet metering tubes (2) from the outer edge of the cluster. Install the new idle metering tubes into the cluster, using care not to bend or damage the tube.

7) Replace the (2) original main metering jets with the #56 jets included with the kit.

8) With the carb top inverted, grasp the power valve piston with a pair of pliers and extract it from the housing. Insert the new power valve piston assembly into the top housing, press the retainer washer into the recess of the casting, and use a small punch to stake the washer in place. Install new power valve into the lower main body.

9) Reset the float level as illustrated. Set dimension at  $\frac{3}{4}$ " from float seam to gasket.

10) Reassemble carb and install on manifold with a new gasket (included).

Speedway Motors Inc.,  
P.O. Box 81906 Lincoln, NE 68501  
402-323-3200 [www.SpeedwayMotors.com](http://www.SpeedwayMotors.com)



# Modifications to the 2 (secondary) end carbs

- 1) Remove, disassemble, and clean carbs as you would for a normal rebuild.
- 2) Remove the power valves and power valve piston assemblies from the carbs. Install the power valve plug and new gasket in place of the power valve into the lower main body of each carb. Don't worry about plugging the casting hole where the power valve piston was removed, the base plate eliminates the vacuum source to this port.
- 3) Remove screws securing the choke plate to the choke shaft. Remove and discard choke plate, shaft, and all related choke components from each carb. Insert the 4 small chrome plugs into the choke shaft bosses in the upper casting.
- 4) Reset the float level as illustrated. Set dimension at  $\frac{3}{4}$ " from float seam to gasket.
- 5) Install new base plates onto carb bodies using the supplied gaskets.
- 6) Remove original main metering jets and install the #55 jets included in the kit.

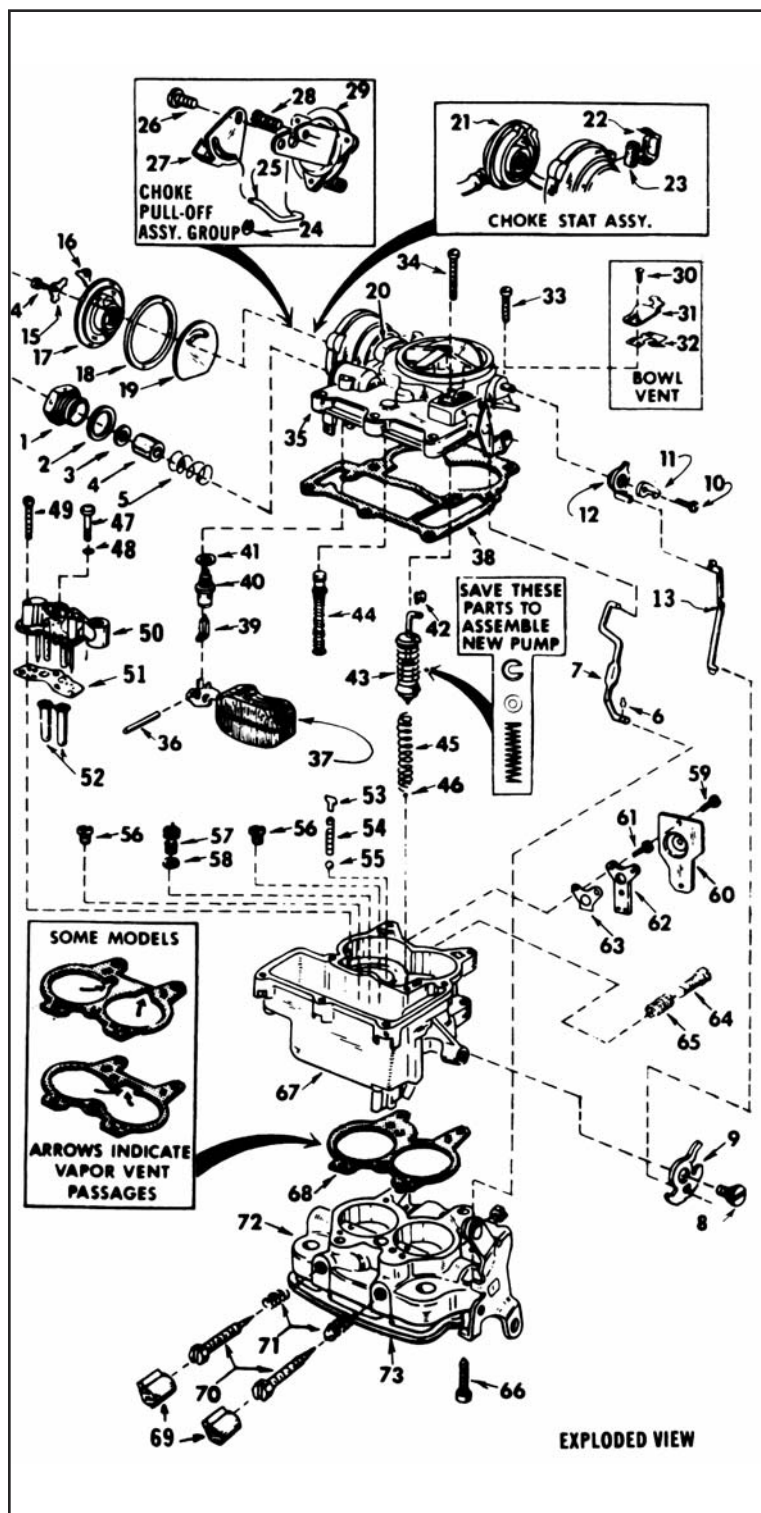
**NOTE: On smaller cubic inch engines, the amount of fuel injected into the engine by three accelerator pumps when advancing to WOT may cause black smoke out of the exhaust and an excessively rich condition. To reduce the amount of accelerator pump shot on the secondary carbs remove the accelerator pump assembly (item #43 in illustration) from the upper air horn housing. Compress spring and remove C clip retainer. Cut up to 5 full coils off of the accelerator pump spring. Reassemble accelerator pump and reinstall in air horn. Each engine combination is different, some fine tuning is normally required.**

- 7) Reassemble carbs and install on manifold with new gaskets (included).

# Rochester Carburetor 2 Barrel - Models 2G, 2GC, 2GV

- 1) Carefully read the text in the previous pages to become familiar with the content of this instruction sheet before performing carburetor overhaul.
- 2) The exploded view shown is typical of the model carburetor this kit will service. The view may differ slightly from the actual carburetor being overhauled.

## PART LIST SHOWN DOES NOT REFLECT THE CONTENTS OF THE KIT

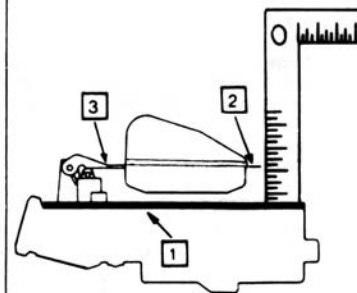


- 3) Use the exploded view as a guide. The numerical sequence may generally be followed to disassemble the carburetor far enough to permit cleaning and inspection.
- 4) Parts list shown DOES NOT Reflect the contents of the kit
- 5) Kit may contain extra parts intended for other carburetors within this group. Substitute identical replacement parts for original worn parts found in carburetor.

### FLOAT LEVEL ADJUSTMENT

1. INVERT AIR HORN & POSITION GASKET ON PARTING SURFACE
2. MEASURE AS SPECIFIED FROM AIR HORN GASKET TO NOTCH AT FLOAT AS SHOWN
3. BEND HERE TO ADJUST FLOAT LEVEL

NOTE: TO AVOID DAMAGING FLOAT NEEDLE, DO NOT PRESS NEEDLE INTO SEAT.



### CLEANING

Cleaning must be done with carburetor disassembled. Use spray cleaner and a stiff bristle brush to remove dirt and carbon deposits. Do not use abrasives and wires to clean parts and passageways. Wash off in suitable solvent, and clear all passageways with compressed air.

**CAUTION:** When cleaning with solvent do not soak or spray parts containing rubber leather plastic and electrical components.

|                                      |   |
|--------------------------------------|---|
| 1 Adapter Fuel Inlet                 | 38 Gasket, Air Horn   |
| 2 Gasket, Adapter                    | 39 Needle, Fuel Inlet                                       |
| 3 Gasket, Fuel Filter                | 40 Seat, Fuel Inlet   |
| 4 Filter, Fuel Inlet                 | 41 Gasket Seal  |
| 5 Spring, Override Filter            | 42 Clip, Pump Piston  |
| 6 Clip, Pump Rod Lower               | 43 Piston Assembly, Pump                                    |
| 7 Rod, Pump Piston                   | 44 Piston Assembly, Power Valve                             |
| 8 Screw, Fast Idle Cam               | 45 Spring, Piston Return                                    |
| 9 Cam, Fast Idle                     | 46 Ball Check, Pump Intake (Small)                          |
| 10 Screw, Lever, Trip                | 47 Screw, Center, Venturi Assembly                          |
| 11 Lever, Trip                       | 48 Gasket, Center Screw                                     |
| 12 Lever, Engaging Choke             | 49 Screw, Mounting, Venturi Assembly                        |
| 13 Rod, Connecting, Choke            | 50 Venturi Assembly   |
| 14 Screw, Retainer, Choke Cover      | 51 Gasket, Venturi  |
| 15 Retainer, Serrated, Choke Cover   | 52 Tube, Main Well(2)                                       |
| 16 Retainer, Choke Cover             | 53 Retainer, Spring Pump Discharge                          |
| 17 Cover, Choke Stat Assembly        | 54 Spring, Pump Discharge Ball                              |
| 18 Gasket, Choke Cover               | 55 Ball Check, Pump Discharge (Large)                       |
| 19 Deflector, Heat, Choke Cover      | 56 Jet, Main (2)  |
| 20 Seal, Choke, Housing (Not Shown)  | 57 Power Valve  |
| 21 Choke Stat Cover # Assembly       | 58 Gasket Power Valve                                       |
| 22 Holder, Filter #                  | 59 Screw, Hot Idle Compensator Cover                        |
| 23 Filter, Intake Air#               | 60 Cover, Hot Idle Compensator                              |
| 24 "E" Clip, Choke Pull-off Link#    | 61 Screw, Bi-Metallic Valve                                 |
| 25 Link, Choke-Pull-Off#             | 62 Bi-Metallic Valve, Hot Idle Compensator                  |
| 26 Screw, Choke Shaft Slotted Lever# | 63 Gasket, Bi-Metallic Valve                                |
| 27 Lever, Choke Shaft Slotted#       | 64 Screw, Idle Air Adjusting (By-pass Idle System)          |
| 28 Screw, Choke Pull-Off Mounting#   | 65 Spring, Idle Air Adjusting Screw                         |
| 29 Choke Pull-Off Assembly#          | 66 Screw Throttle Body to Main Body                         |
| 30 Screw Vent Valve Cover#           | 67 Main Body  |
| 31 Cover Vent Valve#                 | 68 Gasket, Throttle Body to Main Body (Match up Old Gasket) |
| 32 Valve, Vent#                      | 69 Cap, Limiter #   |
| 33 Screw, Air Horn Mounting (Short)  | 70 Screw, Idle Mixture                                      |
| 34 Screw, Air Horn Mounting (Long)   | 71 Spring, Idle Mixture Screw                               |
| 35 Air Horn Assembly                 | 72 Throttle Body assembly                                   |
| 36 Rod, Float Hinge                  | 73 Gasket Flange  |
| 37 Float Assembly                    |   |

# Some Models

# IMPORTANT

## **DISCLAIMER**

In an effort to offer our customers the low prices, quick service and great value, Speedway Motors reserves the right to change suppliers, specifications, colors, prices, materials. Each of the previous items is subject to change without notice. Speedway is not responsible for any typographical errors or misinterpretations. Quantities are limited on some items.

## **WARRANTY DISCLAIMER**

The purchaser understands and recognizes that racing parts, specialized street rod equipment, and all parts and services sold by Speedway Motors, Inc. are exposed to many and varied conditions due to the manner in which they are installed and used. Speedway Motors, Inc. makes no warranties, either express or implied, including any warranty of merchantability or fitness for a particular purpose other than those contained in its current catalog with respect to the goods identified on the face of the invoice. There is no warranty expressed or implied as to whether the goods sold hereby will protect purchaser or ultimate user of such goods from injury or death. Speedway Motors assumes no liability after this period.

## **DAMAGE CLAIMS**

Always inspect your package upon delivery. Inspect all packages in the presence of the delivery driver. The driver must note any damage. Ask the driver the Carrier's procedures for handling damage claims. You must hold the original box, packing material and damaged merchandise for inspection or the carrier will not honor the claim. Notify Speedway Motors customer service department for instructions on returning damaged goods. Speedway is not responsible if no notification is given within 5 days of receipt.

## **SHORTAGES**

Always check the contents of your delivery to insure all the parts that you ordered were received. Please read the invoice. Double check all packing materials, small items may be wrapped inside with these products. Shortages may occur from damage to the box, so save all packing materials. Inspect the box for holes that would allow parts to fall out. If you are missing any item(s) be sure to check your invoice for back orders or canceled items before calling the customer service department. If Speedway has to split a shipment into multiple boxes, packages may be delivered on different days. You need to contact the customer service department within 5 days of delivery to assure the prompt replacement. Speedway Motors assumes no liability after this period.

## **REFUSALS**

All refused COD customers will be billed a 15% restocking charge plus freight to and from the destination! If you have questions please contact Speedway's customer service department.

## **WARRANTY CLAIMS**

If an item has a manufacturer's warranty as being free from defects we will exchange only. If the item has been used and you are requesting warranty work, this may take up to 30 days as warranty work is done by the manufacturer NOT Speedway Motors. If you have any questions please contact customer service.

## **RETURNS**

Speedway wants you to be satisfied with your purchase. If within 30 days after you receive your shipment you are not satisfied, you may return the item for refund or exchange. All exchanged or returned merchandise must be in original factory condition with no modifications or alterations. Returned merchandise must include all packaging materials, warranty cards, manuals, and accessories. If the items being returned need to be repackaged there will be a re-packing charge. Re-pack the item in a sturdy box and include a copy of your invoice and complete the form on the back of the invoice. You must ship orders back **PRE-PAID. WE DO NOT ACCEPT COD SHIPMENTS.** All exchanges need to have reshipping charges included. Items that are returned after 30 days are subject to 15% restocking charges. All fiberglass returned will have 15% restocking charge. No returns on electrical parts, video tapes, and books. Absolutely no returns on special order or close out merchandise.

## **FREE CATALOGS**

Speedway Motors offers FREE catalogs for Race, Street, Sprint and Midget, Sport Compact and Pedal Car Restoration.

Some items are not legal for sale or use in California on pollution controlled motor vehicles. These items are legal in California for racing vehicles only which may never be used upon a highway.

**Speedway Motors Inc.,  
P.O. Box 81906 Lincoln, NE 68501  
402-323-3200 [www.SpeedwayMotors.com](http://www.SpeedwayMotors.com)**

