

INSTRUCTIONS

910-34457

©Speedway Motors, Inc. January 2010

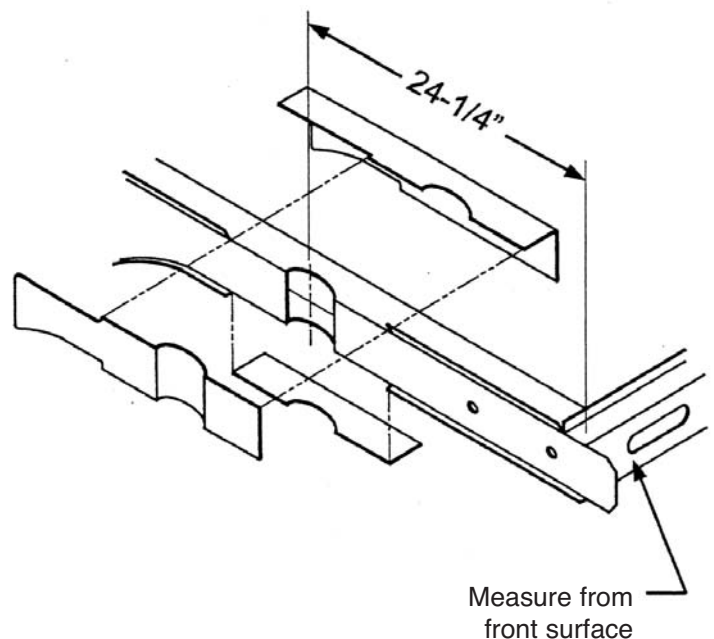
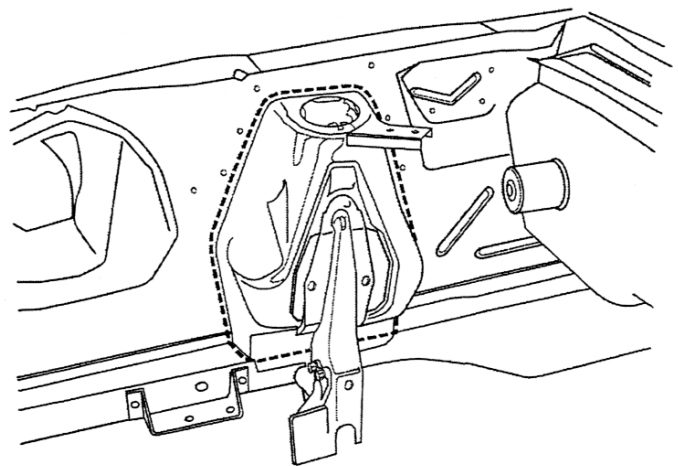
'64-'70 Mustang II Crossmember Kit

**PLEASE READ INSTRUCTIONS COMPLETELY
BEFORE STARTING YOUR INSTALLATION**

This kit installs the '74-'78 Mustang II or '74-'80 Pinto/Bobcat suspension into the 1964 thru 1970 Mustangs. This kit is designed to use the full type lower control arms that eliminate the strut rods.

NOTE: A qualified welder should do all the welding using the proper techniques.

1. Support the car on four jack stands. The frame should be sitting at the same angle as it will when it's on the ground. Place the front jack stands at the firewall, the front frame will be cut open and it will be temporarily weak.
2. Remove all the old suspension and steering components. Draw a line around the shock towers as shown in the illustration and cut them out. Also remove the lower control arm mounts. Speedway carries the replacement inner fender panels under part numbers 910-34450 for the '64-'66 and part number 910-34451 for the '67-'70.
3. Trimming and boxing the frame rails: The illustration shows the notches for the coil springs that need to be cut into the rails. You will also need to remove the lower outer flanges on the rails in the boxing plate area. Measure back 24 1/4" from the front surface of the front crossmember and scribe a line around the frame rails, this will be your spindle centerline. Using your formed boxing plates as a template, scribe a line for the spring relief on both the top and bottom of the frame rail. The spring relief is centered on the spindle centerline. The illustration shows how the boxing plates will fully box the frame rails and strengthen the frame in this area. The boxing



plates should be welded to clean metal, so clean or grind the frame rails where the boxing plates are to be welded. Start with the upper inner boxing plates. Place them on to the frame rails, clamp them firmly in place and tack weld in. Clamp the outer boxing plates on to the frame rails and tack weld them to the inner boxing plates and the frame rails. Place the lower boxing plates in place and tack weld them in. Remove the clamps and weld the boxing plates to each other and to the frame rails all around. Weld short sections at a time, alternating locations to minimize any warping.

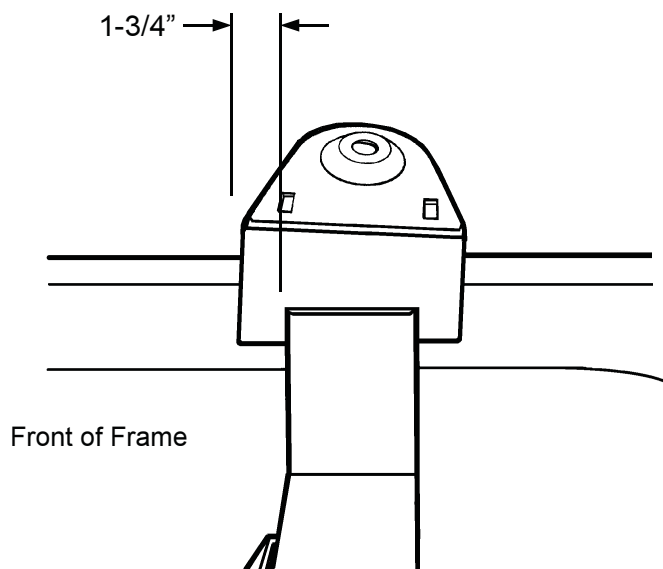
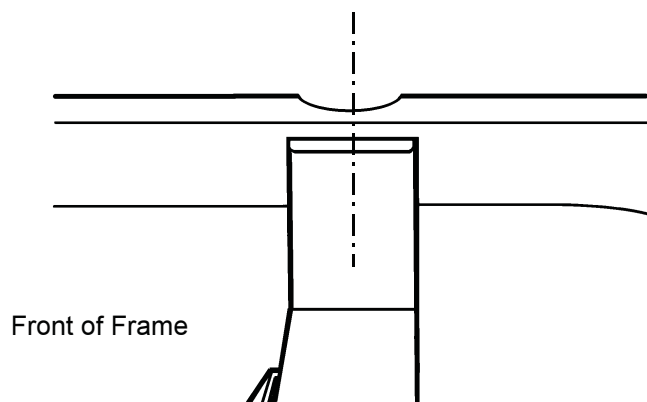
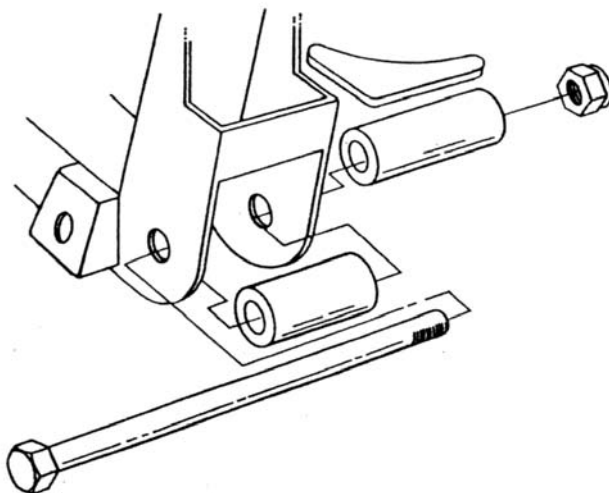
4. This kit is designed to use the full lower control arms. The stock arms will not clear or mount to the frame rails. Position the short spacer in between the crossmember and the longer spacer to rear side of the crossmember, using the 5/8" mounting bolts through the crossmember as a guide. Install the gusset horizontally toward the engine between the rear spacer and the crossmember. The rack mounts on the crossmember goes toward the front. Weld the rear spacers and gussets all around. Weld the crossmember spacer in as far as possible inside the crossmember on both sides.

5. Slide the crossmember up in between the frame rails centering it on the axle centerline. If the crossmember doesn't fit, grind the sides of the crossmember until you can get it in place, make sure the crossmember fits flush with the bottom of the boxing plates, then tack weld the crossmember in place. Check location then weld in place, welding all around ends, top, sides and bottom.

6. The left and right spring towers are slightly different. The front side of the spring tower is taller than the rear; they slope down towards the back to maintain the proper anti-dive geometry. The spring towers sit on top of the frame rails and drops over the crossmember as shown on the illustration. Clamp in place and weld all around including the outer and inner gusset flanges.

The crossmember installation is now complete

After the suspension is re-assembled and back on the ground you can do the alignment. The wheel alignment should be done by a qualified alignment shop.



ALIGNMENT SPECIFICATIONS:

CAMBER	1/2 Degree positive
CASTER	1 Degree positive (manual steering)
CASTER	3 Degrees positive (power steering)
TOE IN	1/8" plus or minus 1/8"

IMPORTANT

DISCLAIMER

In an effort to offer our customers the low prices, quick service and great value, Speedway Motors reserves the right to change suppliers, specifications, colors, prices, materials. Each of the previous items is subject to change without notice. Speedway is not responsible for any typographical errors or misinterpretations. Quantities are limited on some items.

WARRANTY DISCLAIMER

The purchaser understands and recognizes that racing parts, specialized street rod equipment, and all parts and services sold by Speedway Motors, Inc. are exposed to many and varied conditions due to the manner in which they are installed and used. Speedway Motors, Inc. makes no warranties, either express or implied, including any warranty of merchantability or fitness for a particular purpose other than those contained in its current catalog with respect to the goods identified on the face of the invoice. There is no warranty expressed or implied as to whether the goods sold hereby will protect purchaser or ultimate user of such goods from injury or death. Speedway Motors assumes no liability after this period.

DAMAGE CLAIMS

Always inspect your package upon delivery. Inspect all packages in the presence of the delivery driver. The driver must note any damage. Ask the driver the Carrier's procedures for handling damage claims. You must hold the original box, packing material and damaged merchandise for inspection or the carrier will not honor the claim. Notify Speedway Motors customer service department for instructions on returning damaged goods. Speedway is not responsible if no notification is given within 5 days of receipt.

SHORTAGES

Always check the contents of your delivery to insure all the parts that you ordered were received. Please read the invoice. Double check all packing materials, small items may be wrapped inside with these products. Shortages may occur from damage to the box, so save all packing materials. Inspect the box for holes that would allow parts to fall out. If you are missing any item(s) be sure to check your invoice for back orders or canceled items before calling the customer service department. If Speedway has to split a shipment into multiple boxes, packages may be delivered on different days. You need to contact the customer service department within 5 days of delivery to assure the prompt replacement. Speedway Motors assumes no liability after this period.

REFUSALS

All refused COD customers will be billed a 15% restocking charge plus freight to and from the destination! If you have questions please contact Speedway's customer service department.

WARRANTY CLAIMS

If an item has a manufacturer's warranty as being free from defects we will exchange only. If the item has been used and you are requesting warranty work, this may take up to 30 days as warranty work is done by the manufacturer NOT Speedway Motors. If you have any questions please contact customer service.

RETURNS

Speedway wants you to be satisfied with your purchase. If within 30 days after you receive your shipment you are not satisfied, you may return the item for refund or exchange. All exchanged or returned merchandise must be in original factory condition with no modifications or alterations. Returned merchandise must include all packaging materials, warranty cards, manuals, and accessories. If the items being returned need to be repackaged there will be a re-packing charge. Re-pack the item in a sturdy box and include a copy of your invoice and complete the form on the back of the invoice. You must ship orders back **PRE-PAID. WE DO NOT ACCEPT COD SHIPMENTS.** All exchanges need to have reshipping charges included. Items that are returned after 30 days are subject to 15% restocking charges. All fiberglass returned will have 15% restocking charge. No returns on electrical parts, video tapes, and books. Absolutely no returns on special order or close out merchandise.

FREE CATALOGS

Speedway Motors offers FREE catalogs for Race, Street and Sprint and Midget.

Some items are not legal for sale or use in California on pollution controlled motor vehicles. These items are legal in California for racing vehicles only which may never be used upon a highway.

**Speedway Motors Inc.,
P.O. Box 81906 Lincoln, NE 68501
402-323-3200 www.SpeedwayMotors.com**

