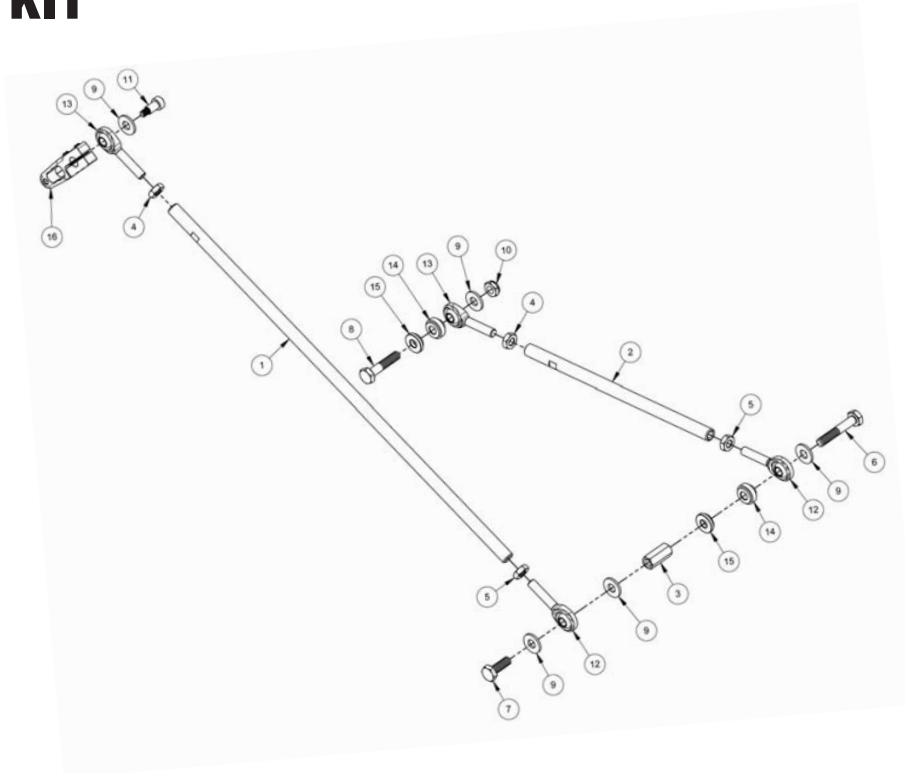


INSTRUCTIONS

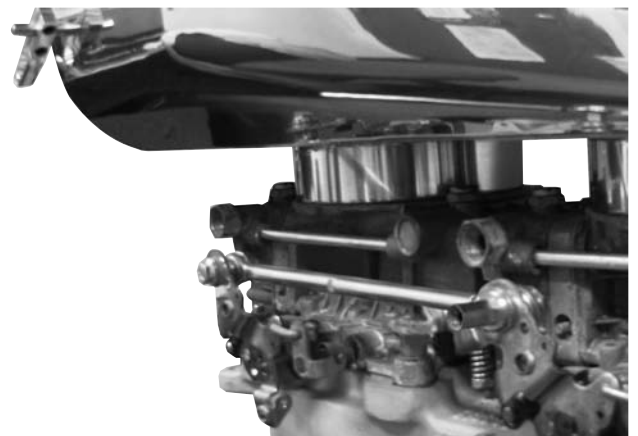
135-1990

©Speedway Motors, Inc. May. 2008

LINKAGE KIT



- 1) Install carburetors on intake manifold.
- 2) Detach the short link from the linkage assembly by unscrewing bolt from coupling nut.
- 3) Separate the carb throttle arm bushing halves. Position the linkage on the inboard side of the throttle arm of the rear carb, with bolt threads protruding through the throttle arm. Secure with outer bushing half and coupling nut.
- 4) Adjust length of link as necessary to assemble bushing halves into the throttle arm of front carb. Again, make sure that the larger tapered bushing half is inboard, and the smaller flat bushing half is on the outside of throttle arm. Secure with nut and bolt.



NOTE: Engine can now be started and adjustments made, prior to installing the scoop. Assure that linkage operates smoothly and returns to idle without binding.

TO SYNC CARBS: Back off idle speed adjustment screw of front carb 3-5 turns CCW. Back off idle speed of rear carb until the throttle blades are lightly seated in bores, count turns. Adjust link between carbs until the throttle blades are lightly seated in the front carb.

Shorten linkage approximately 1/8 turn to remove slack, and tighten jam nuts. Turn rear carb idle speed adjustment screw CW the number of turns previously noted. Do not adjust front carb idle speed screw, all idle speed adjustments are now made at the rear (primary) carb.

5) Install scoop per instructions. With butterflies of scoop in the vertical position install the linkage arm on the butterfly shaft, with the arm angled forward and down at approximately a 45 degree angle.

6) Measure from center hole in scoop linkage arm to the coupling nut on the aft carb throttle arm.

Shorten the long link rod as necessary to achieve the required dimension.

NOTE: In most cases, with the scoop centered on the carbs, you will need to shorten the long link rod 1-1 1/4". Double check all dimensions before cutting off the end of link rod. Make certain that you cut off the end of the link rod with R/H threads (as most tap and die sets do not include L/H taps). Depending on how much material is removed from the end of the link rod it may be necessary to chase the threads in order to have full engagement with the rod end. The threads are 1/4 x 28 NF.

7) Connect forward end of long link rod to the center hole of linkage arm on the scoop. Connect the rear end of link rod to the coupling nut on aft carb throttle arm.

8) Operate linkage and check for freedom of movement. Make certain that the linkage to the scoop does not bind or go over center. Close hood, make sure that linkage does not hang up or bind on hood or scoop opening.



IMPORTANT

DISCLAIMER In an effort to offer our customers the low prices, quick service and great value, Speedway Motors reserves the right to change suppliers, specifications, colors, prices, materials. Each of the previous items is subject to change without notice. Speedway is not responsible for any typographical errors or misinterpretations. Quantities are limited on some items.

WARRANTY DISCLAIMER The purchaser understands and recognizes that racing parts, specialized street rod equipment, and all parts and services sold by Speedway Motors, Inc. are exposed to many and varied conditions due to the manner in which they are installed and used. Speedway Motors, Inc. makes no warranties, either express or implied, including any warranty of merchantability or fitness for a particular purpose other than those contained in its current catalog with respect to the goods identified on the face of the invoice. There is no warranty expressed or implied as to whether the goods sold hereby will protect purchaser or ultimate user of such goods from injury or death. Speedway Motors assumes no liability after this period.

DAMAGE CLAIMS Always inspect your package upon delivery. Inspect all packages in the presence of the delivery driver. The driver must note any damage. Ask the driver the Carrier's procedures for handling damage claims. You must hold the original box, packing material and damaged merchandise for inspection or the carrier will not honor the claim. Notify Speedway Motors customer service department for instructions on returning damaged goods. Speedway is not responsible if no notification is given within 5 days of receipt.

SHORTAGES Always check the contents of your delivery to insure all the parts that you ordered were received. Please read the invoice. Double check all packing materials, small items may be wrapped inside with these products. Shortages may occur from damage to the box, so save all packing materials. Inspect the box for holes that would allow parts to fall out. If you are missing any item(s) be sure to check your invoice for back orders or canceled items before calling the customer service department. If Speedway has to split a shipment into multiple boxes, packages may be delivered on different days. You need to contact the customer service department within 5 days of delivery to assure the prompt replacement. Speedway Motors assumes no liability after this period.

REFUSALS All refused COD customers will be billed a 15% restocking charge plus freight to and from the destination! If you have questions please contact Speedway's customer service department.

WARRANTY CLAIMS If an item has a manufacturer's warranty as being free from defects we will exchange only. If the item has been used and you are requesting warranty work, this may take up to 30 days as warranty work is done by the manufacturer NOT Speedway Motors. If you have any questions please contact customer service.

RETURNS Speedway wants you to be satisfied with your purchase. If within 30 days after you receive your shipment you are not satisfied, you may return the item for refund or exchange. All exchanged or returned merchandise must be in original factory condition with no modifications or alterations. Returned merchandise must include all packaging materials, warranty cards, manuals, and accessories. If the items being returned need to be repackaged there will be a re-packing charge. Repack the item in a sturdy box and include a copy of your invoice and complete the form on the back of the invoice. You must ship orders back **PRE-PAID. WE DO NOT ACCEPT COD SHIPMENTS.** All exchanges need to have reshipping charges included. Items that are returned after 30 days are subject to 15% restocking charges. All fiberglass returned will have 15% restocking charge. No returns on electrical parts, video tapes, and books. Absolutely no returns on special order or close out merchandise.

FREE CATALOGS Speedway Motors offers FREE catalogs for Race, Street, Sprint and Midget, Sport Compact and Pedal Car restoration.

****Some items are not legal for sale or use in California on pollution controlled motor vehicles. These items are legal in California for racing vehicles only which may never be used upon a highway.**



**Speedway Motors Inc., P.O. Box 81906
Lincoln, NE 68501 (402) 323-3200
www.speedwaymotors.com**