

WINNING SECRET IS REVEALED

New

The *EDGE* you have
been looking for is here!

EDGE VALVE

The all new EDGE valve is more than one special valve code. It is an entire package of specifically engineered shocks that work together to provide a performance edge that you will feel the first time you take to the track.

If you want to take the guesswork out of your shock set-up,
the new line of AFco EDGE Valve shocks is your answer.

Complete Non-Winged Sprint Car Package
100% Dyno Tested & Race Proven to win!

Package part number

EDGE5-P (includes the 11 shocks you need
for all track conditions):

QTY	PART NUMBER	APPLICATION
1x	16E5-LF-B	Left Front – Base Set-up
1x	16E5-RF-B-HR	Right Front – Base Set-up & Rough
1x	16E5-LR-B	Left Rear – Base Set-up
1x	16E5-RR-B	Right Rear – Base Set-up
1x	16E5-LF-HR	Left Front – Heavy/Rough
1x	16E5-LR-HR	Left Rear – Heavy/Rough
1x	16E5-RR-HR	Right Rear – Heavy/Rough
1x	16E5-LF-S	Left Front – Slick
1x	16E5-RF-S	Right Front – Slick
1x	16E5-LR-S	Left Rear – Slick
1x	16E5-RR-S	Right Rear – Slick

Slick Track Package

(includes 4 shocks for slick track only)

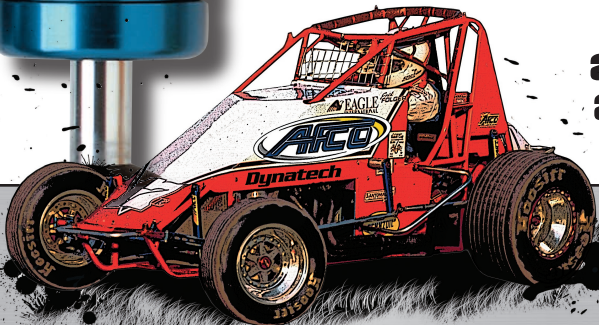
Package
part
number

EDGE5-S
(includes 4 shocks):

QTY	PART NUMBER	APPLICATION
1x	16E5-LF-S	Left Front
1x	16E5-RF-S	Right Front
1x	16E5-LR-S	Left Rear
1x	16E5-RR-S	Right Rear

The EDGE valve
shocks can provide
you the complete
arsenal to dominate
any track condition.

See us in the pits to
find out more about
the NEW EDGE valve
shocks and how they
can take your car to
the next level!

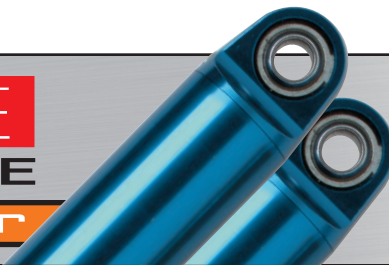


AFco

800.632.2320

EDGE VALVE TUNING GUIDE

Non-winged sprint car



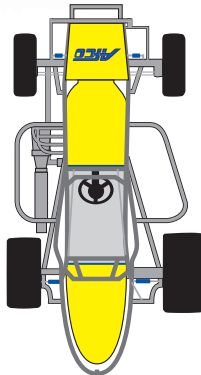
BASE SET-UP

LF
16E5-LF-B

RF
16E5-RF-B-HR

LR
16E5-LR-B

RR
16E5-RR-B



USES: Flat to medium banked tracks with medium tack, smooth to light rough surface, medium to high speed conditions.

NOTES: This set up works well for a variety of medium type track conditions.

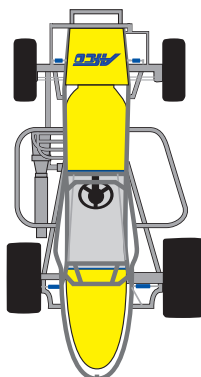
SLICK TRACK SET-UP

LF
16E5-LF-S

RF
16E5-RF-S

LR
16E5-LR-S

RR
16E5-RR-S



USES: Slick racetracks, especially stop and go, slow corner speed types

NOTES: This package promotes weight transfer and tends to tighten overall handling. Use if running Base Set-up (described above) and additional traction is needed.

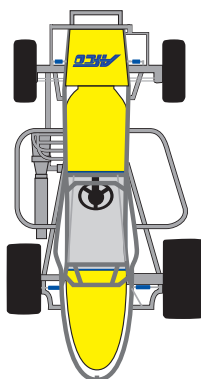
HEAVY and/or ROUGH TRACK SET-UP

LF
16E5-LF-HR

RF
16E5-RF-B-HR

LR
16E5-LR-HR

RR
16E5-RR-HR



USES: Heavy, fast, rough racetracks, and when racing on the cushion

NOTES: This package helps keep the car stable during rough conditions and tends to loosen overall handling.

Key Part Number / Code System

Example: **16E5-LR-B**

16 = aluminum small body shock

E = special EDGE valving

5 = valving for non-winged sprint cars

LR = left rear suspension location

B = Base Set-up

(**S** would indicate replacement for Base Set-up when track is slow/slick; **HR** would indicate replacement for Base Set-up when track is heavy/rough)